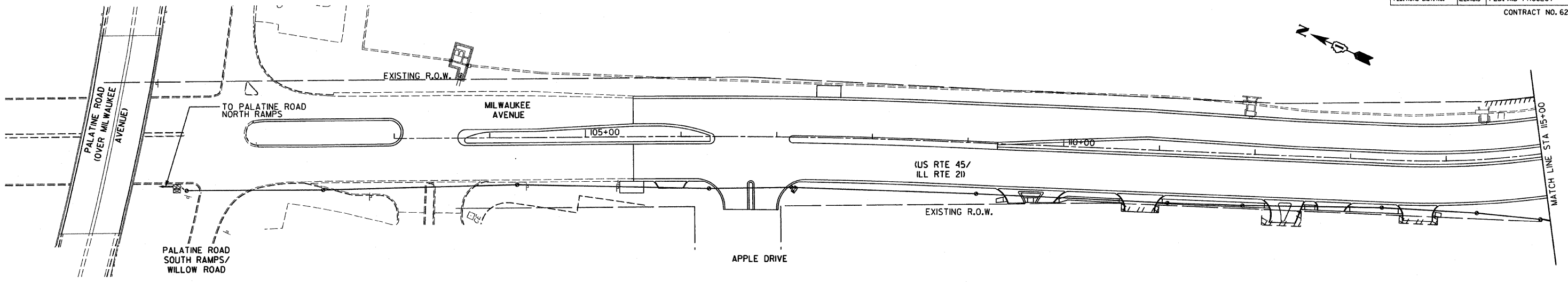


F.A.P. RTE.	SECTION	COUNTY	TOTAL SHEETS	SHEET NO.
374	3268F-R-1	COOK	279	195
STA.		TO STA.		
FED. ROAD DIST. NO.	ILLINOIS	FED. AID PROJECT		
CONTRACT NO. 62387				

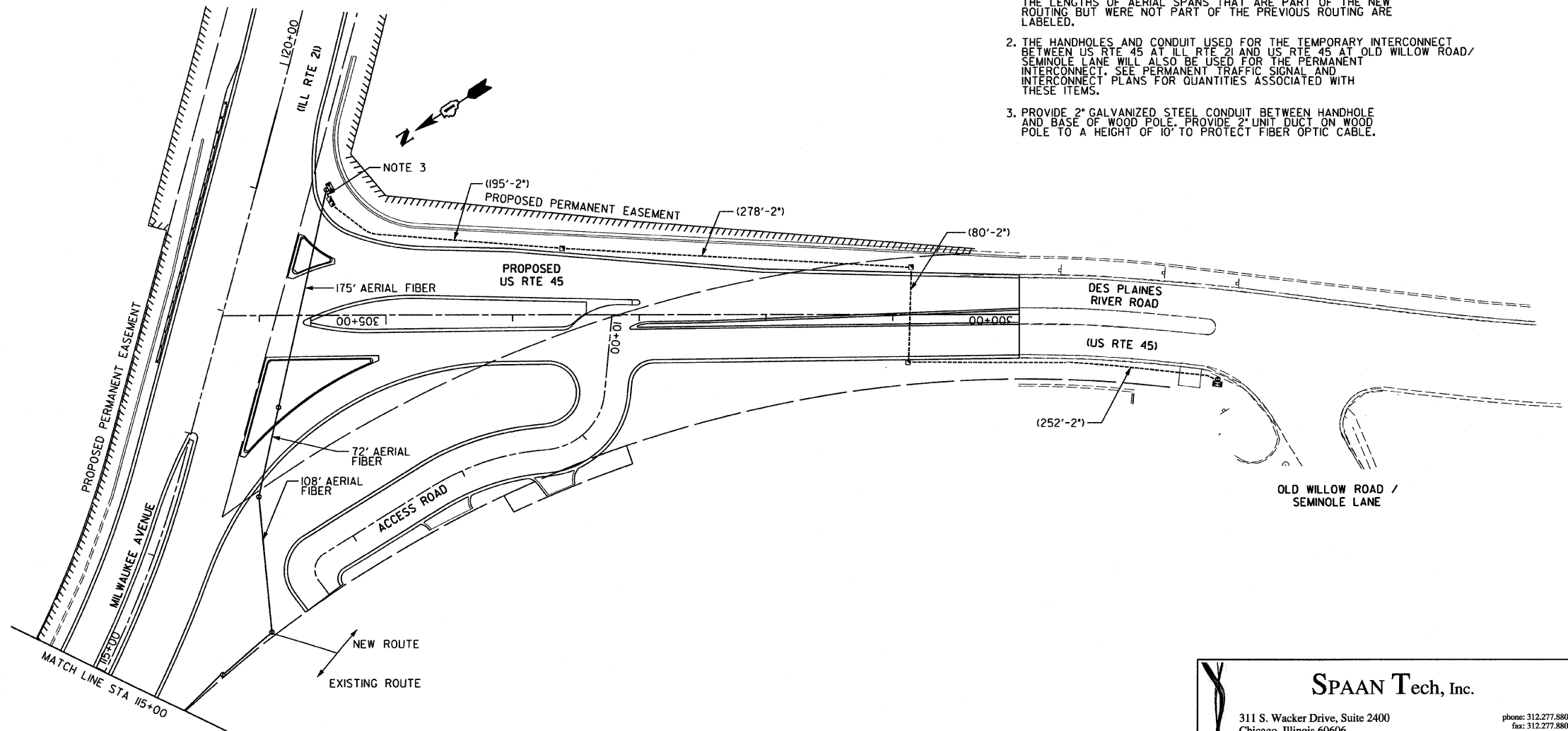


TEMPORARY INTERCONNECT NOTES

- ALL WORK REQUIRED TO RE-ROUTE THE TEMPORARY INTERCONNECT BETWEEN STAGES I AND II IS INCLUDED IN THE COST OF THE ASSOCIATED TEMPORARY TRAFFIC SIGNAL INSTALLATIONS. ONLY THE LENGTHS OF AERIAL SPANS THAT ARE PART OF THE NEW ROUTING BUT WERE NOT PART OF THE PREVIOUS ROUTING ARE LABELED.
- THE HANDHOLES AND CONDUIT USED FOR THE TEMPORARY INTERCONNECT BETWEEN US RTE 45 AT ILL RTE 21 AND US RTE 45 AT OLD WILLOW ROAD/SEMINOLE LANE WILL ALSO BE USED FOR THE PERMANENT INTERCONNECT. SEE PERMANENT TRAFFIC SIGNAL AND INTERCONNECT PLANS FOR QUANTITIES ASSOCIATED WITH THESE ITEMS.
- PROVIDE 2" GALVANIZED STEEL CONDUIT BETWEEN HANDHOLE AND BASE OF WOOD POLE. PROVIDE 2" UNIT DUCT ON WOOD POLE TO A HEIGHT OF 10' TO PROTECT FIBER OPTIC CABLE.

TEMPORARY INTERCONNECT PLAN LEGEND

TEMPORARY CONTROLLER	
EXISTING PERMANENT CONTROLLER	
EXISTING HANDHOLE	
PROPOSED HANDHOLE	
EXISTING HEAVY-DUTY HANDHOLE	
PROPOSED HEAVY-DUTY HANDHOLE	
EXISTING DOUBLE HANDHOLE	
PROPOSED DOUBLE HANDHOLE	
TEMPORARY WOOD POLE	
AERIAL FIBER OPTIC CABLE WITH MESSENGER WIRE	
G.S. CONDUIT IN GROUND	
EXISTING G.S. CONDUIT	



REVISIONS	
NAME	DATE

ILLINOIS DEPARTMENT OF TRANSPORTATION

TEMPORARY INTERCONNECT PLAN
 MILWAUKEE AVENUE (US RTE 45/ILL RTE 21)
 STAGE II, POST STAGE II, AND POST-CONSTRUCTION

SCALE: 1" = 50'
 DATE: 02/05/08

DRAWN BY: RAS
 DESIGN BY: RAS
 CHECKED BY: ADO

SPAAN Tech, Inc.

311 S. Wacker Drive, Suite 2400
 Chicago, Illinois 60606

phone: 312.277.8800
 fax: 312.277.8808
 web: www.SpaanTech.com

Robert Swanson
 Untitled
 07/07/00 - ILL RTE 21 - IDOT Dist. 1
 pt:07/06/00 - ILL RTE 21 - IDOT Dist. 1 Working Files Drawing Files Shy\Final\TS15-35.dgn
 2/5/2008 7:01:52 AM 50,0000 ft / IN.