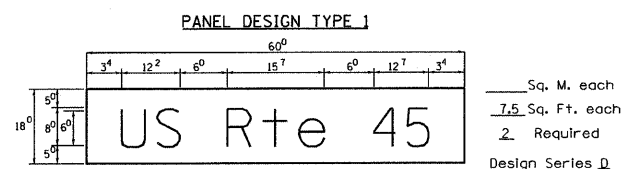
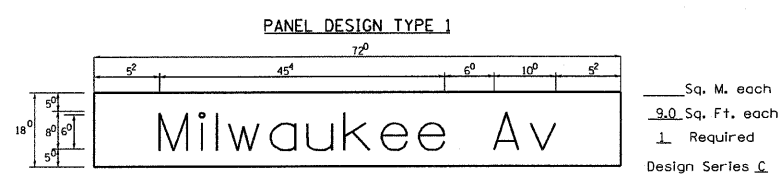


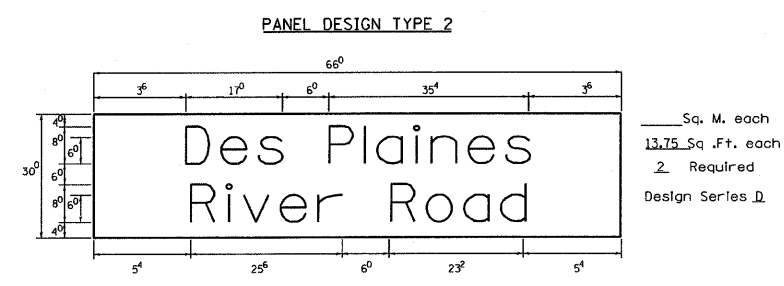
Sq. M. each
6.75 Sq. Ft. each
2 Required
Design Series D



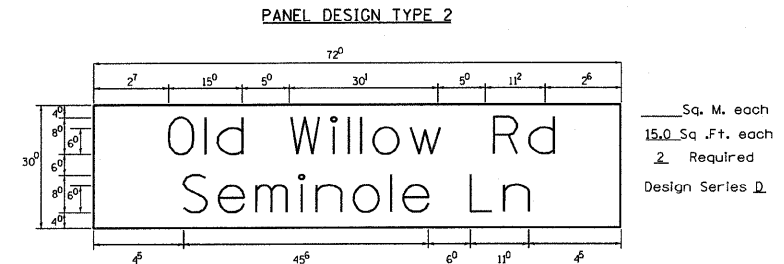
Sq. M. each
7.5 Sq. Ft. each
2 Required
Design Series D



Sq. M. each
9.0 Sq. Ft. each
1 Required
Design Series C



Sq. M. each
13.75 Sq. Ft. each
2 Required
Design Series D



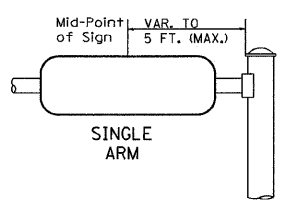
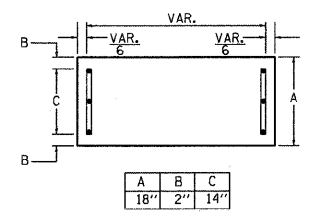
Sq. M. each
15.0 Sq. Ft. each
2 Required
Design Series D

GENERAL NOTES

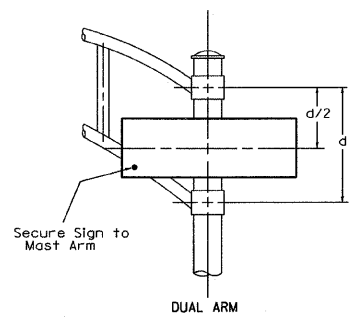
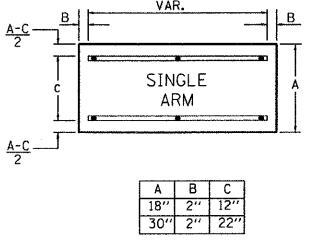
- WHERE MAST ARM MOUNTED STREET NAME SIGNS ARE SPECIFIED, THE MAST ARM ASSEMBLY AND POLES SHALL BE DESIGNED TO SUPPORT THE LOADINGS CALLED FOR ON STANDARDS 877001, 877006 AND 877011, AS APPLICABLE, PLUS TWO (2) SIGN PANELS 2'-6" x 6'-0" MOUNTED AS SHOWN. THE DESIGN SHALL BE IN ACCORDANCE WITH THE REQUIREMENTS OF THE CURRENT "STANDARD SPECIFICATIONS FOR STRUCTURAL SUPPORTS FOR HIGHWAY SIGNS, LUMINAIRES, AND TRAFFIC SIGNALS" AS PUBLISHED BY THE AMERICAN ASSOCIATION OF STATE HIGHWAY AND TRANSPORTATION OFFICIALS FOR 80 M.P.H. WIND VELOCITY.
- ALL SIGNS SHALL HAVE A WHITE REFLECTORIZED LEGEND AND BORDER ON A GREEN REFLECTORIZED BACKGROUND, TYPE A SHEETING.
- THE SIGN LENGTH SHOULD BE INCREASED IN 6-INCH INCREMENTS, BUT THE OVERALL LENGTH SHOULD NOT EXCEED 6'-0".
- ALL BORDERS SHALL BE 3/4" WIDE AND CORNER RADIUS SHALL BE 2-1/4".
- SIGNFIX ALUMINUM CHANNEL FRAMING SYSTEM SHALL BE USED FOR ALL SIGNS ATTACHED TO SIGNAL POLES AND POSTS. LOCAL SUPPLIERS OF THE SIGNFIX ALUMINUM CHANNEL FRAMING SYSTEM ARE:
 - A.K.T. CORPORATION, SCHAUMBURG, IL
 - AMERICAN FABRICATION CO., CHICAGO HEIGHTS, IL
 - TUCKER COMPANY, INC., WAUWATOSA, WI
 - WESTERN TRAFFIC CONTROL INC., CICERO, IL

PARTS LISTING:
SIGN CHANNEL PART #HPN053 (MED. CHANNEL)
SIGN SCREWS 1/4" x 14 x 1" H.W.H., #3
BRACKETS PART #HPN034 (UNIVERSAL)
CHANNEL CLAMPS WITH STAINLESS STEEL STRAPPING
OTHER BRANDS OF MOUNTING HARDWARE ARE ACCEPTABLE, BASED UPON THE DEPARTMENT'S APPROVAL AND COMPATIBILITY WITH THE CHANNEL/BACKET OF THE ABOVE PRODUCT.

SUPPORTING CHANNELS



SUPPORTING CHANNELS



SIGNFIX ALUMINUM CHANNEL FRAMING SYSTEM
Shall be used. See Note #5.

Upper Case To Lower Case Spacing Chart 8-6 Inch Series "C & D"

| SERIES | SECOND LETTER | | | | | | | | | | | | | | | |
|---------|---------------|----|-------|----|-----|----|----|----|-----|----|-----|----|-----|----|----|----|
| | acde | | bhikl | | f w | | J | | s t | | v y | | x z | | | |
| | C | D | C | D | C | D | C | D | C | D | C | D | C | D | | |
| A W X | 12 | 14 | 14 | 15 | 12 | 14 | 06 | 10 | 11 | 14 | 06 | 10 | 11 | 12 | 12 | 14 |
| B | 14 | 15 | 20 | 21 | 14 | 15 | 11 | 12 | 14 | 15 | 12 | 14 | 12 | 14 | 16 | 17 |
| C E G | 14 | 15 | 20 | 21 | 12 | 14 | 06 | 10 | 12 | 14 | 12 | 14 | 14 | 15 | 14 | 15 |
| D O Q R | 14 | 15 | 20 | 21 | 14 | 15 | 06 | 10 | 12 | 14 | 12 | 14 | 14 | 15 | 14 | 15 |
| F | 05 | 06 | 14 | 15 | 06 | 10 | 05 | 06 | 10 | 06 | 10 | 06 | 10 | 11 | 12 | 14 |
| H I M N | 20 | 21 | 22 | 24 | 20 | 21 | 14 | 15 | 16 | 17 | 16 | 17 | 20 | 21 | 20 | 21 |
| J U | 20 | 21 | 20 | 21 | 16 | 17 | 14 | 15 | 16 | 17 | 16 | 17 | 16 | 17 | 20 | 21 |
| K L | 11 | 12 | 16 | 17 | 11 | 12 | 05 | 06 | 11 | 12 | 11 | 12 | 11 | 12 | 12 | 14 |
| P | 12 | 14 | 14 | 15 | 12 | 14 | 05 | 06 | 11 | 12 | 11 | 12 | 12 | 14 | 12 | 14 |
| S | 12 | 14 | 16 | 17 | 12 | 14 | 06 | 10 | 12 | 14 | 12 | 14 | 12 | 14 | 12 | 14 |
| T | 11 | 12 | 16 | 17 | 06 | 10 | 06 | 10 | 11 | 12 | 11 | 12 | 11 | 12 | 12 | 14 |
| V | 06 | 10 | 14 | 15 | 12 | 06 | 10 | 12 | 14 | 12 | 14 | 12 | 14 | 12 | 14 | 14 |
| Y | 05 | 06 | 14 | 15 | 06 | 10 | 05 | 06 | 05 | 07 | 05 | 06 | 10 | 11 | 12 | 14 |
| Z | 16 | 17 | 22 | 24 | 16 | 17 | 12 | 14 | 16 | 17 | 16 | 17 | 16 | 17 | 20 | 21 |

Lower Case To Lower Case Spacing Chart 6 Inch Series "C & D"

| SERIES | SECOND LETTER | | | | | | | | | | | | | | | |
|-------------|---------------|----|-------|----|-----|----|----|----|-----|----|-----|----|-----|----|----|----|
| | acde | | bhikl | | f w | | J | | s t | | v y | | x z | | | |
| | C | D | C | D | C | D | C | D | C | D | C | D | C | D | | |
| ad h g i j | 16 | 17 | 22 | 24 | 16 | 17 | 12 | 14 | 14 | 15 | 14 | 15 | 16 | 17 | 16 | 17 |
| l m n q u | 12 | 14 | 16 | 17 | 11 | 12 | 05 | 06 | 11 | 12 | 11 | 12 | 12 | 14 | 12 | 14 |
| b f k o p s | 12 | 14 | 16 | 17 | 12 | 14 | 06 | 10 | 12 | 14 | 12 | 14 | 12 | 14 | 12 | 14 |
| c e | 12 | 14 | 16 | 17 | 12 | 14 | 06 | 10 | 12 | 14 | 12 | 14 | 12 | 14 | 12 | 14 |
| r | 06 | 10 | 12 | 14 | 06 | 10 | 03 | 05 | 06 | 05 | 06 | 06 | 10 | 06 | 10 | 10 |
| t z | 12 | 14 | 16 | 17 | 12 | 14 | 06 | 10 | 11 | 12 | 11 | 12 | 12 | 14 | 12 | 14 |
| v y | 11 | 12 | 14 | 15 | 11 | 12 | 05 | 06 | 10 | 06 | 10 | 11 | 12 | 11 | 12 | 14 |
| w | 11 | 12 | 14 | 15 | 11 | 12 | 05 | 06 | 11 | 12 | 11 | 12 | 11 | 12 | 12 | 14 |
| x | 12 | 14 | 16 | 17 | 11 | 12 | 05 | 06 | 11 | 12 | 11 | 12 | 11 | 12 | 12 | 14 |

Number To Number Spacing Chart 8 Inch Series "C & D"

| SERIES | SECOND NUMBER | | | | | | | | | | | | | | | |
|--------|---------------|----|----|----|----|----|----|----|----|----|----|----|----|----|----|----|
| | 0 | 1 | 2 | 3 | 4 | 5 | 6 | 7 | 8 | 9 | | | | | | |
| | D | C | D | C | D | C | D | C | D | C | D | | | | | |
| 0 9 | 16 | 17 | 16 | 17 | 14 | 15 | 12 | 14 | 14 | 15 | 16 | 17 | 12 | 14 | 16 | 17 |
| 1 | 20 | 21 | 20 | 21 | 16 | 17 | 14 | 15 | 20 | 21 | 20 | 21 | 14 | 15 | 20 | 21 |
| 2 3 4 | 14 | 15 | 14 | 15 | 12 | 14 | 12 | 14 | 14 | 15 | 14 | 15 | 11 | 12 | 16 | 17 |
| 5 | 14 | 15 | 14 | 15 | 11 | 12 | 11 | 12 | 14 | 15 | 14 | 15 | 11 | 12 | 14 | 15 |
| 6 | 16 | 17 | 14 | 15 | 12 | 14 | 12 | 14 | 14 | 15 | 14 | 15 | 11 | 12 | 14 | 15 |
| 7 | 12 | 14 | 12 | 14 | 14 | 15 | 12 | 14 | 05 | 06 | 12 | 14 | 14 | 15 | 12 | 14 |
| 8 | 16 | 17 | 16 | 17 | 14 | 15 | 12 | 14 | 14 | 15 | 16 | 17 | 12 | 14 | 16 | 17 |

UPPER AND LOWER CASE LETTER WIDTHS

| LETTERS | 6 INCH UPPER CASE LETTERS | | | | 8 INCH UPPER CASE LETTERS | | | | 6 INCH LOWER CASE LETTERS | | | |
|---------|---------------------------|----|--------|----|---------------------------|----|--------|---|---------------------------|---|--------|---|
| | SERIES | | SERIES | | SERIES | | SERIES | | SERIES | | SERIES | |
| | C | D | C | D | C | D | C | D | C | D | C | D |
| A | 36 | 50 | 50 | 65 | a | 35 | 42 | | | | | |
| B | 32 | 40 | 43 | 53 | b | 35 | 42 | | | | | |
| C | 32 | 40 | 43 | 53 | c | 35 | 41 | | | | | |
| D | 32 | 40 | 43 | 53 | d | 35 | 42 | | | | | |
| E | 30 | 35 | 40 | 47 | e | 35 | 42 | | | | | |
| F | 30 | 35 | 40 | 47 | f | 23 | 26 | | | | | |
| G | 32 | 40 | 43 | 53 | g | 35 | 42 | | | | | |
| H | 32 | 40 | 43 | 53 | h | 35 | 42 | | | | | |
| I | 07 | 07 | 11 | 12 | i | 11 | 11 | | | | | |
| J | 30 | 36 | 40 | 50 | j | 20 | 22 | | | | | |
| K | 32 | 41 | 43 | 54 | k | 35 | 42 | | | | | |
| L | 30 | 35 | 40 | 47 | l | 11 | 11 | | | | | |
| M | 37 | 45 | 51 | 61 | m | 60 | 70 | | | | | |
| N | 32 | 40 | 43 | 53 | n | 35 | 42 | | | | | |
| O | 34 | 42 | 45 | 55 | o | 36 | 43 | | | | | |
| P | 32 | 40 | 43 | 53 | p | 35 | 42 | | | | | |
| Q | 34 | 42 | 45 | 55 | q | 35 | 42 | | | | | |
| R | 32 | 40 | 43 | 53 | r | 26 | 32 | | | | | |
| S | 32 | 40 | 43 | 53 | s | 36 | 42 | | | | | |
| T | 30 | 35 | 40 | 47 | t | 27 | 32 | | | | | |
| U | 32 | 40 | 43 | 53 | u | 35 | 42 | | | | | |
| V | 35 | 44 | 47 | 60 | v | 42 | 47 | | | | | |
| W | 44 | 52 | 60 | 70 | w | 55 | 64 | | | | | |
| X | 34 | 40 | 45 | 53 | x | 44 | 51 | | | | | |
| Y | 36 | 50 | 50 | 66 | y | 46 | 53 | | | | | |
| Z | 32 | 40 | 43 | 53 | z | 36 | 43 | | | | | |

| NUMBER | 6 INCH SERIES | | 8 INCH SERIES | |
|--------|---------------|----|---------------|----|
| | C | D | C | D |
| 1 | 12 | 14 | 15 | 20 |
| 2 | 32 | 40 | 43 | 53 |
| 3 | 32 | 40 | 43 | 53 |
| 4 | 35 | 43 | 47 | 57 |
| 5 | 32 | 40 | 43 | 53 |
| 6 | 32 | 40 | 43 | 53 |
| 7 | 32 | 40 | 43 | 53 |
| 8 | 32 | 40 | 43 | 53 |
| 9 | 32 | 40 | 43 | 53 |
| 0 | 34 | 42 | 45 | 55 |

EXAMPLE, 2 (3) DENOTES 3/8"

def:aut
 07167.000 - ILL Rte 21 - IDOT Dist 1
 P:\07167.000 - ILL Rte 21 - IDOT Dist 1\Working Files\Drawing Files\Shrt\Final\TS\TS-39.dgn
 1/30/2008 12:20:47 PM
 010 f:tin / IN.

SPAAN Tech, Inc.
 311 S. Wacker Drive, Suite 2400
 Chicago, Illinois 60606
 phone: 312.277.8800
 fax: 312.277.8808
 web: www.SpaanTech.com

| REVISIONS | |
|-----------|------|
| NAME | DATE |
| | |
| | |
| | |
| | |
| | |
| | |
| | |
| | |
| | |
| | |

ILLINOIS DEPARTMENT OF TRANSPORTATION
 DISTRICT I

MAST ARM MOUNTED STREET NAME SIGNS

SCALE: NONE
 DATE: 02/05/08

DRAWN BY: RAS
 DESIGN BY: RAS
 CHECKED BY: ADO