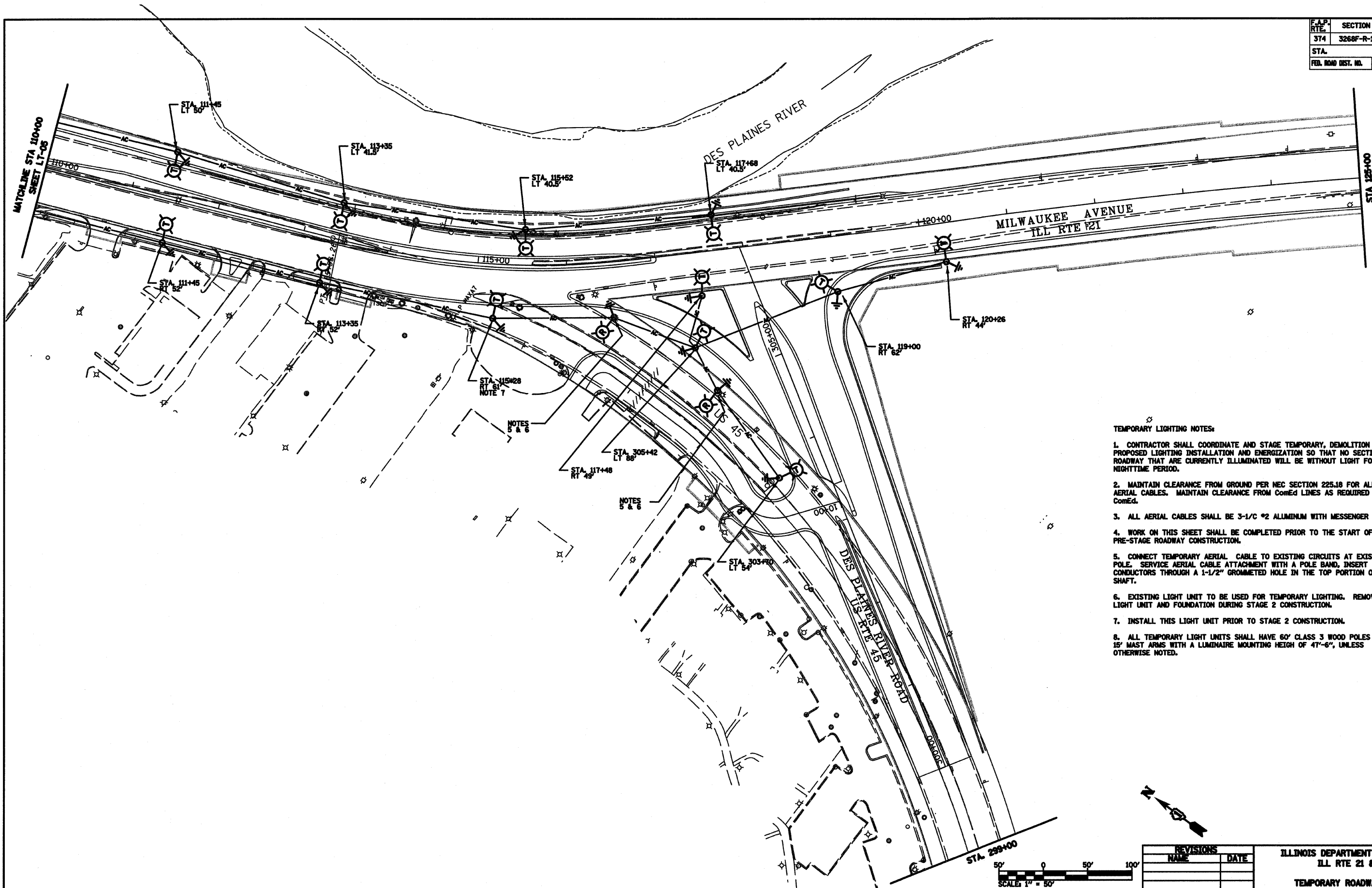


F.A.P. RTE.	SECTION	COUNTY	TOTAL SHEETS	SHEET NO.
374	3268F-R-1	COOK	279	205
STA.		TO STA.		
FED. ROAD DIST. NO.	ILLINOIS	FED. AID PROJECT		

CONTRACT NO. 62387



- TEMPORARY LIGHTING NOTES:
1. CONTRACTOR SHALL COORDINATE AND STAGE TEMPORARY, DEMOLITION AND PROPOSED LIGHTING INSTALLATION AND ENERGIZATION SO THAT NO SECTIONS OF ROADWAY THAT ARE CURRENTLY ILLUMINATED WILL BE WITHOUT LIGHT FOR ANY NIGHTTIME PERIOD.
 2. MAINTAIN CLEARANCE FROM GROUND PER NEC SECTION 225.18 FOR ALL AERIAL CABLES. MAINTAIN CLEARANCE FROM ComEd LINES AS REQUIRED BY ComEd.
 3. ALL AERIAL CABLES SHALL BE 3-1/2" #2 ALUMINUM WITH MESSENGER WIRE.
 4. WORK ON THIS SHEET SHALL BE COMPLETED PRIOR TO THE START OF PRE-STAGE ROADWAY CONSTRUCTION.
 5. CONNECT TEMPORARY AERIAL CABLE TO EXISTING CIRCUITS AT EXISTING POLE. SERVICE AERIAL CABLE ATTACHMENT WITH A POLE BAND, INSERT CONDUCTORS THROUGH A 1-1/2" GROMMETED HOLE IN THE TOP PORTION OF THE SHAFT.
 6. EXISTING LIGHT UNIT TO BE USED FOR TEMPORARY LIGHTING. REMOVE LIGHT UNIT AND FOUNDATION DURING STAGE 2 CONSTRUCTION.
 7. INSTALL THIS LIGHT UNIT PRIOR TO STAGE 2 CONSTRUCTION.
 8. ALL TEMPORARY LIGHT UNITS SHALL HAVE 60' CLASS 3 WOOD POLES AND 15' MAST ARMS WITH A LUMINAIRE MOUNTING HEIGHT OF 47'-6", UNLESS OTHERWISE NOTED.



SPAAN Tech, Inc.

311 S. Wacker Drive, Suite 2400
Chicago, IL 60606

phone: 312.277.8800
fax: 312.277.8808
web: www.SpaanTech.com

REVISIONS	
NAME	DATE

ILLINOIS DEPARTMENT OF TRANSPORTATION
ILL RTE 21 & US RTE 45
TEMPORARY ROADWAY LIGHTING PLAN
ILL RTE 21 STA 110+00 TO STA 125+00
US RTE 45 STA 299+00 TO STA 305+37

SCALE: 1" = 50'-0"
DATE: 02/05/08
DRAWN BY: RPJ
DESIGN BY: IB
CHECKED BY: ADO

Rick Johns
 07/16/2008
 08/07/16/2008
 2/5/2008
 I:\Working Files\Drawing Files\Lighting\LT-06 - Temp.dgn
 1058 29/64 1" / IN.
 10:27:47 AM