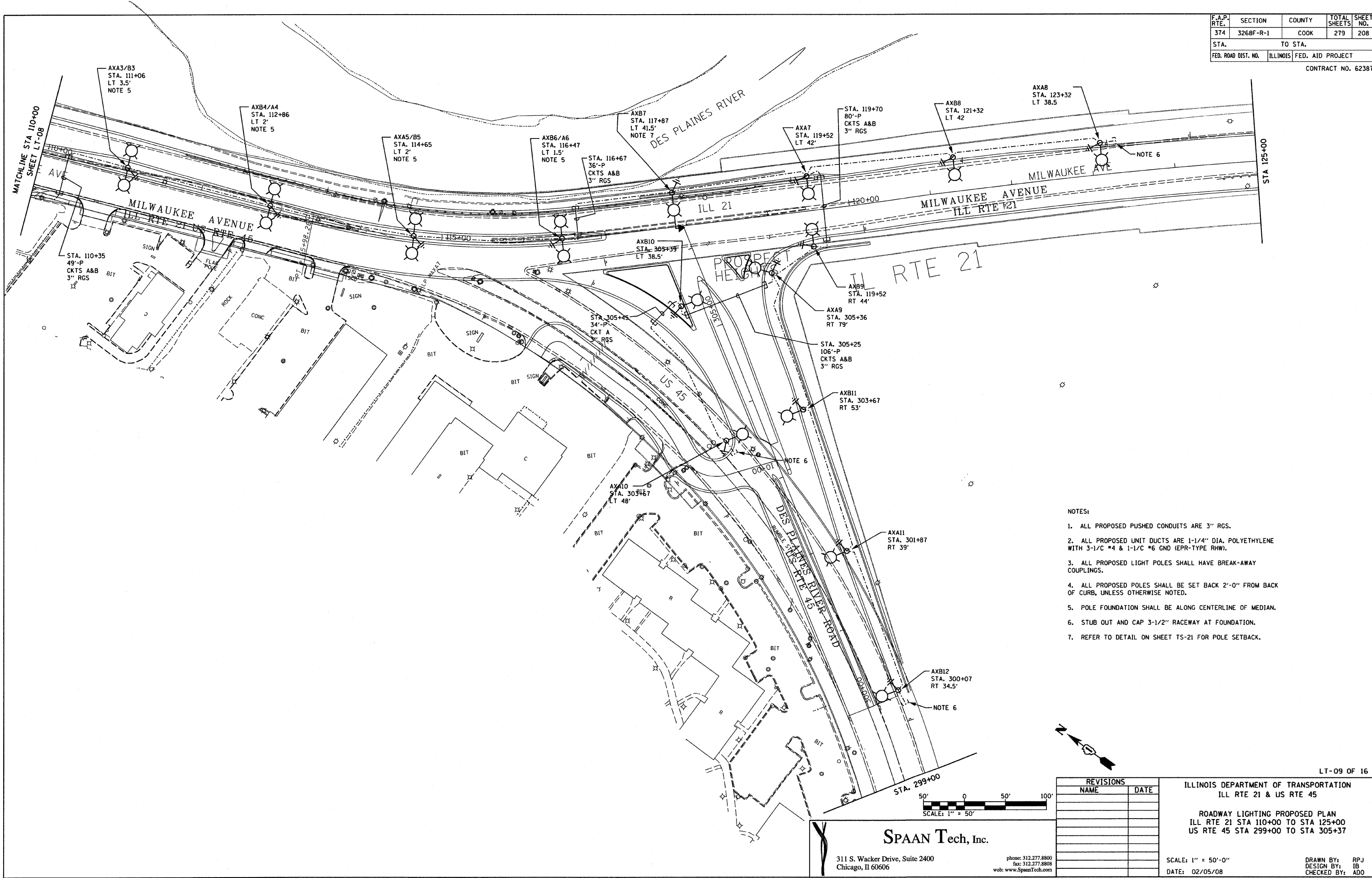
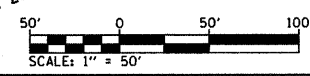


F.A.P. RTE.	SECTION	COUNTY	TOTAL SHEETS	SHEET NO.
374	3268F-R-1	COOK	279	208
STA.		TO STA.		
FED. ROAD DIST. NO.	ILLINOIS	FED. AID PROJECT		
CONTRACT NO. 62387				



- NOTES:
1. ALL PROPOSED PUSHED CONDUITS ARE 3" RGS.
 2. ALL PROPOSED UNIT DUCTS ARE 1-1/4" DIA. POLYETHYLENE WITH 3-1/2" #4 & 1-1/2" #6 GND (EPR-TYPE RHW).
 3. ALL PROPOSED LIGHT POLES SHALL HAVE BREAK-AWAY COUPLINGS.
 4. ALL PROPOSED POLES SHALL BE SET BACK 2'-0" FROM BACK OF CURB, UNLESS OTHERWISE NOTED.
 5. POLE FOUNDATION SHALL BE ALONG CENTERLINE OF MEDIAN.
 6. STUB OUT AND CAP 3-1/2" RACEWAY AT FOUNDATION.
 7. REFER TO DETAIL ON SHEET TS-21 FOR POLE SETBACK.



REVISIONS	
NAME	DATE

ILLINOIS DEPARTMENT OF TRANSPORTATION
ILL RTE 21 & US RTE 45

ROADWAY LIGHTING PROPOSED PLAN
ILL RTE 21 STA 110+00 TO STA 125+00
US RTE 45 STA 299+00 TO STA 305+37

SPAAN Tech, Inc.
311 S. Wacker Drive, Suite 2400
Chicago, IL 60606

phone: 312.277.8800
fax: 312.277.8808
web: www.SpanTech.com

SCALE: 1" = 50'-0"
DATE: 02/05/08

DRAWN BY: RPJ
DESIGN BY: IB
CHECKED BY: ADO

default: District of Columbia, IL, ILL. Rte 21 - IDOT Dist 1
 C:\Users\jking\Documents\Working Files\Drawing Files\sheet\LT-09 - Proposed.dgn
 2/5/2008 3:25:26 PM 500 4" / IN.