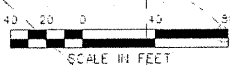


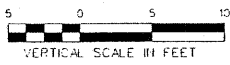
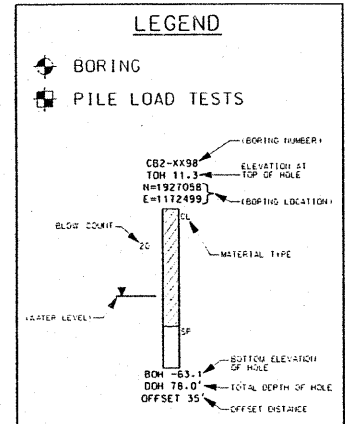
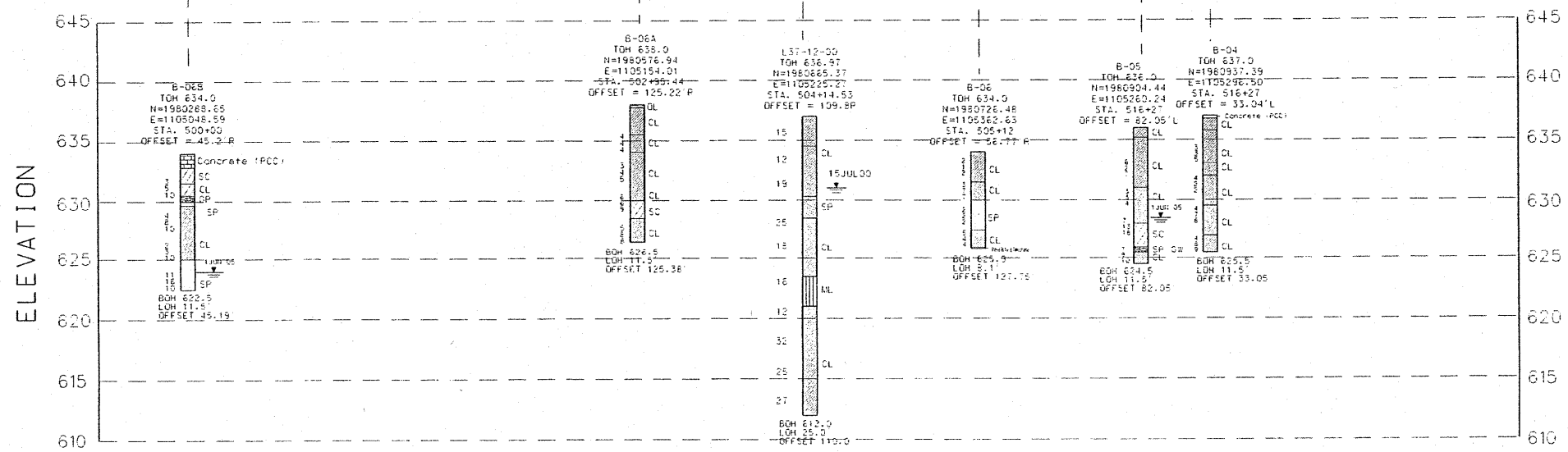
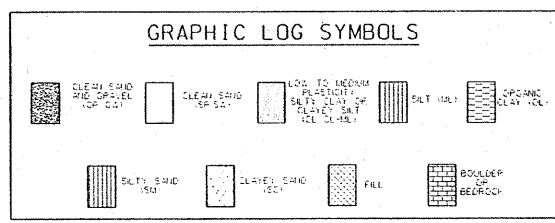
FOR INFORMATION ONLY

FOR INFORMATION ONLY

NOTE:
ALSO SEE SECTION 0800A OF SPECIFICATIONS FOR BORING LOG DATA



SHEET INDEX		
NO	SHEET	TITLE
265	B-01	BORING LOGS
266	C-01	SURVEY OF EXISTING UTILITIES
267	C-02	UTILITY TAG INFORMATION
268	C-03	WORK LIMITS AND CONTROL POINTS DATA
269	C-04	SITE PLAN AND PROFILE STA. 500+00 TO 504+00
270	C-05	SITE PLAN STA. 504+00 TO 516+41
271	C-06	PROFILE STA. 504+00 TO 516+41
272	C-07	NOT USED
273	S-01	STATION 500+00 TO STATION 504+63.77
274	S-02	STATION 504+63.77 TO STATION 506+50
275	S-03	STATION 513+50 TO STATION 516+40.76
276	S-04	SHEET PILE I-WALL TYPICAL SECTIONS
277	S-05	SHEET PILE I-WALL TYPICAL SECTIONS
278	S-06	DETAILS
279	S-07	FLOODWALL HANDRAIL DETAILS



DATE	SYMBOL	DESCRIPTION

DATE:	02/05/2008
SCALE:	AS SHOWN
DRAWING CODE:	STORAGE AREA
CONTRACT NO.:	

U.S. ARMY ENGINEER DISTRICT
CORPS OF ENGINEERS
CHICAGO, ILLINOIS

DOT FAP RT 374 (IL
ROUTE 374), MILWAUKEE AVE
SECTION 3268F-R-1
FLOODWALL

BORING LOGS

SHEET REFERENCE NUMBER:
B-01
SHEET 265 OF 279