

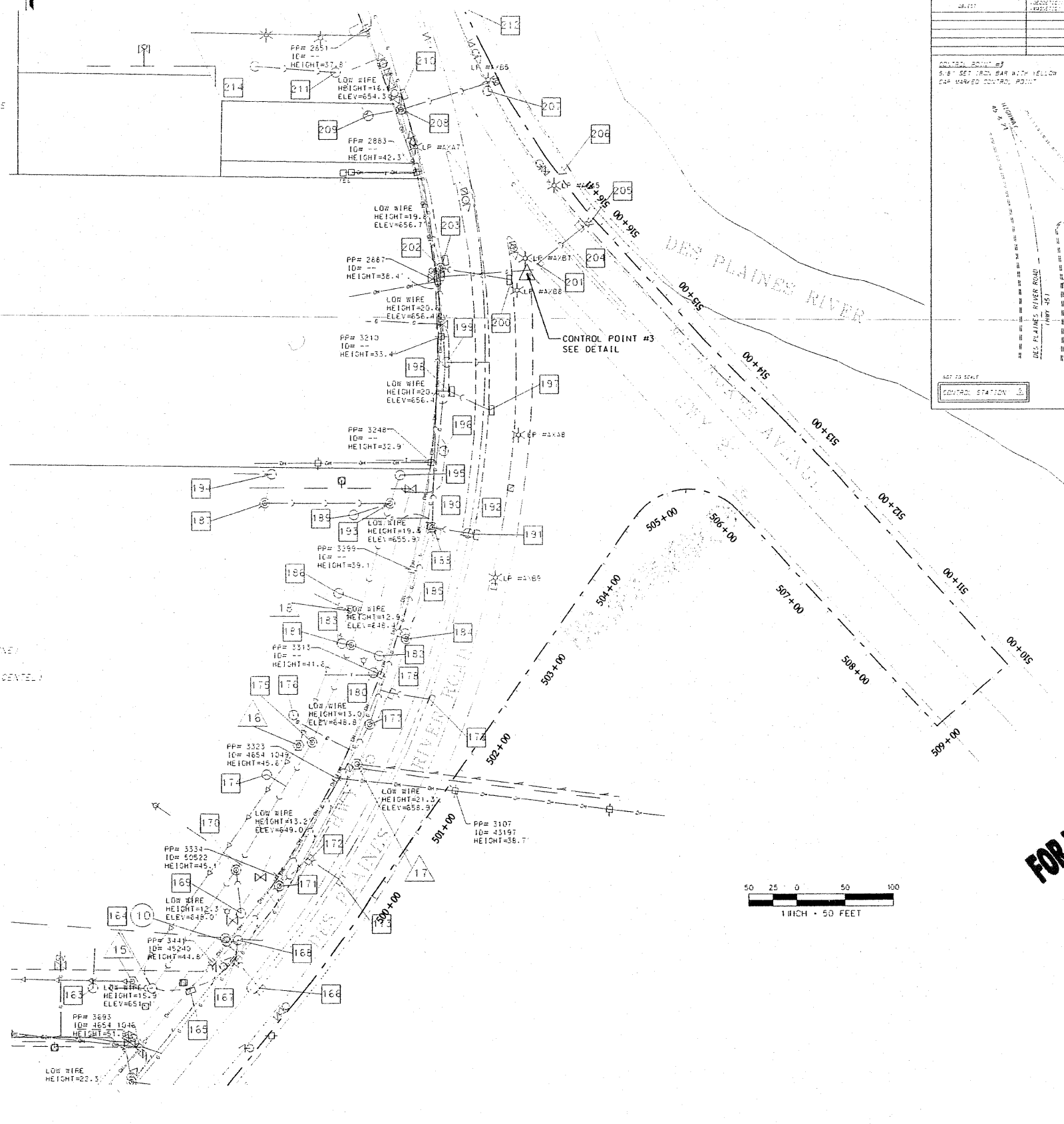
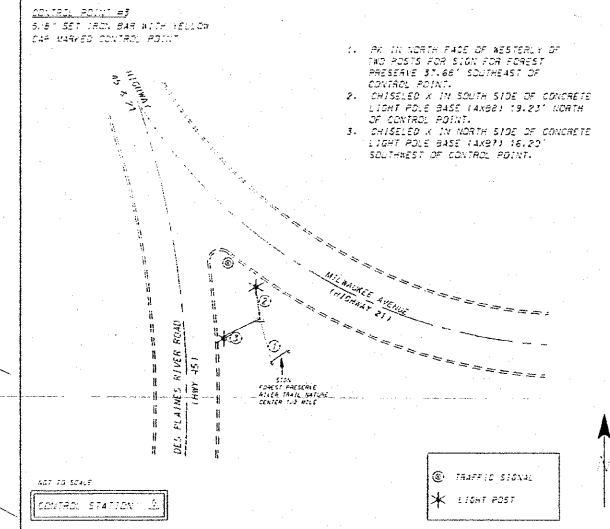
LEGEND

- STORM SEWER TAG
- WATERMAIN TAG
- SANITARY SEWER TAG
- NATURAL GAS VALVE (VICOR)
- NATURAL GAS LINE (VICOR)
- OVERHEAD POWER, TELEPHONE, CATV LINES
- UTILITY POLE
- FIRE HYDRANT
- WATER VALVE
- WATER VALVE VAULT
- WATER SERVICE VALVE (BBOX)
- WATERMAIN
- FLARED END SECTION OR HEADWALL
- STORM SEWER LINE
- CATCH BASIN
- STORM SEWER MANHOLE
- CURB INLET
- AT&T FIBER OPTIC LINE (UNDERGROUND)
- SANITARY SEWER LINE
- SANITARY SEWER FORCEMAIN
- SANITARY MANHOLE
- COVED MANHOLE
- COVED UTILITY RISER
- UNDERGROUND COVED ELECTRIC LINE
- STREET LIGHT
- PHONE RISER (AMERITECH OR CENTEL)
- UNDERGROUND TELEPHONE (AMERITECH OR CENTEL)
- TRAFFIC SIGNAL HANDHOLE
- TRAFFIC SIGNAL DOUBLE HANDHOLE
- I.D.C.T. TRAFFIC CONTROLLER BOX
- TRAFFIC SIGNAL
- CONTROL POINT

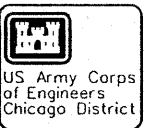
FOR INFORMATION ONLY

CONTROL POINT DETAIL

CONTROL POINT #1	CONTROL POINT #2	CONTROL POINT #3
1. 10.00' SET (CON. BAR WITH YELLOW CAP) MARKED CONTROL POINT	2. 5.8' SET (CON. BAR WITH YELLOW CAP) MARKED CONTROL POINT	3. 10.00' SET (CON. BAR WITH YELLOW CAP) MARKED CONTROL POINT



FOR INFORMATION ONLY



SYMBOL	AMENDMENT DESCRIPTION	DATE APPROVED	SYMBOL	DESCRIPTION	DATE APPROVED

DESIGNED BY:	DATE:	02/05/2008
DRW BY:	SCALE:	AS SHOWN
CHECKED BY:	SIGNATURE NUMBER:	
SUBMITTED BY:	DATE:	

U.S. ARMY ENGINEER DISTRICT  
CORPS OF ENGINEERS  
CHICAGO, ILLINOIS

JOHN GROBOSKI

IDOT F&P RT 374 (IL ROUTE 374), MILWAUKEE AVE SECTION 3268F-R-1 FLOODWALL SURVEY OF EXISTING UTILITIES

SHEET REFERENCE NUMBER: C-01  
SHEET 266 OF 278