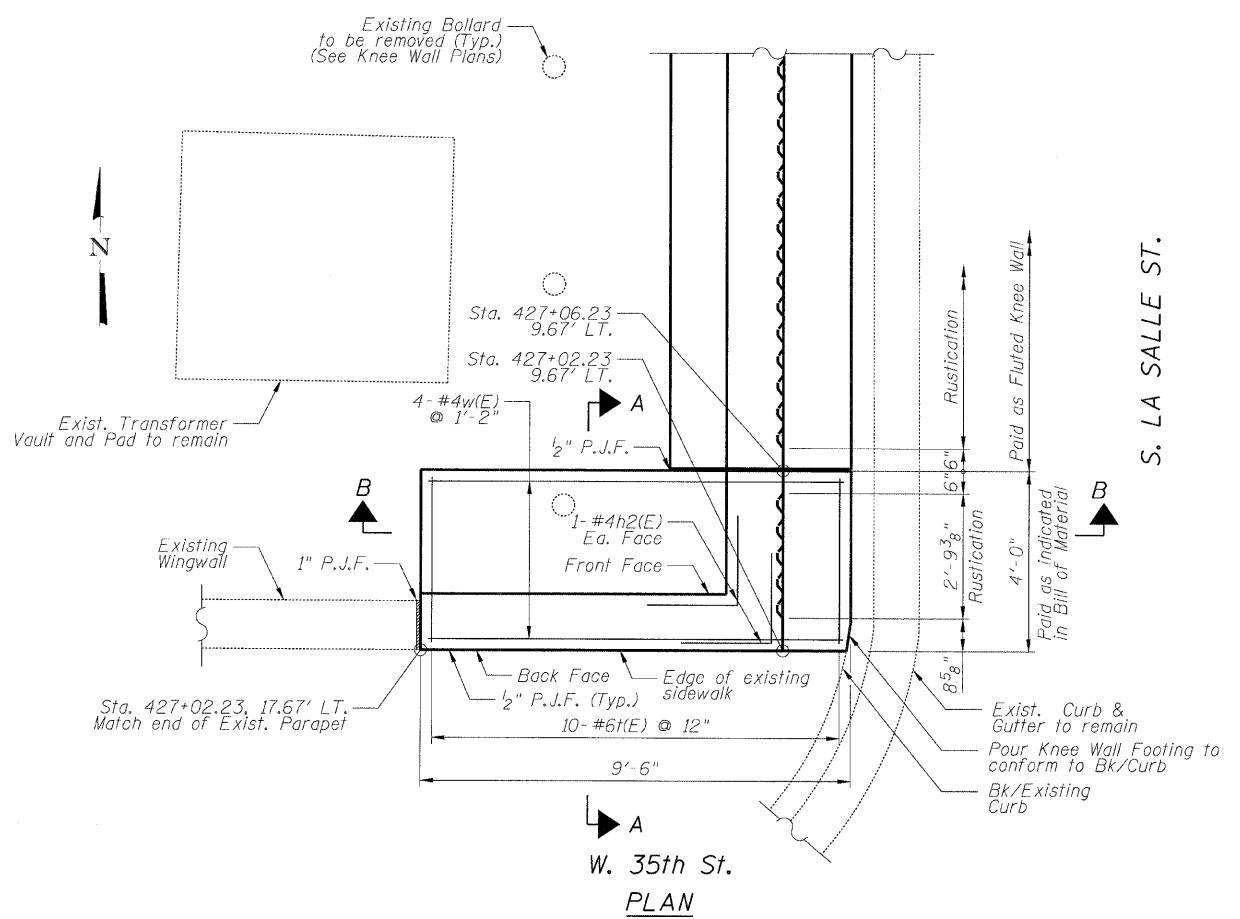
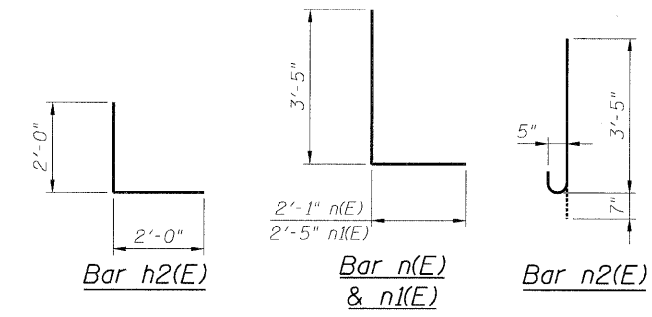
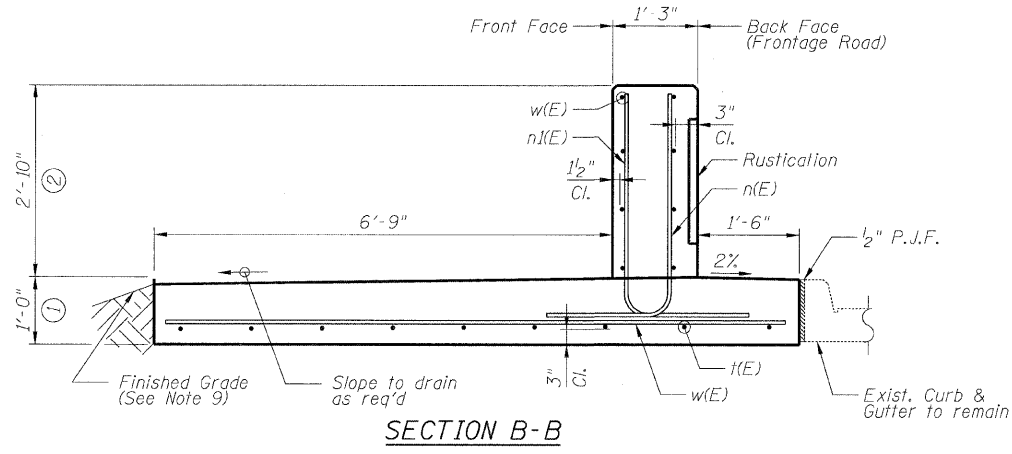
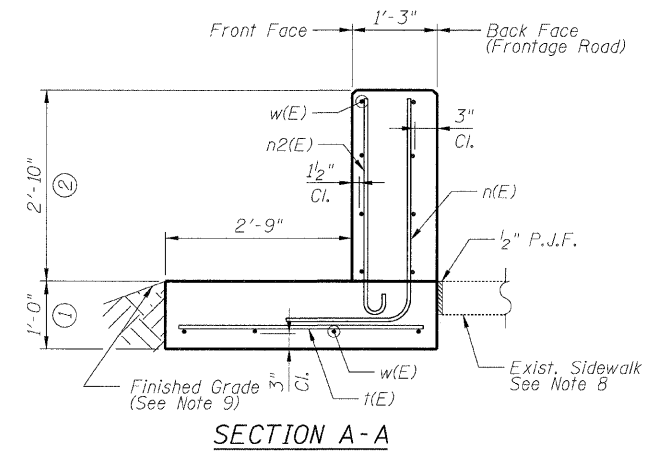
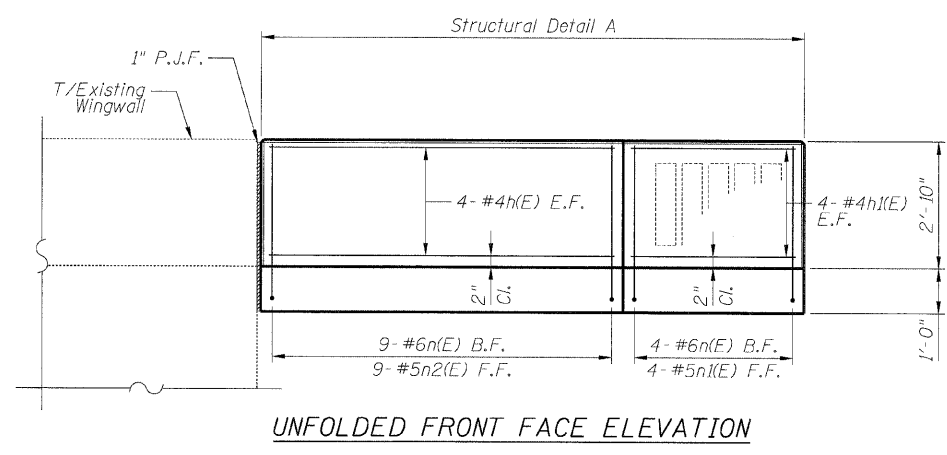


F.A.I.	SECTION	COUNTY	TOTAL SHEETS	SHEET NO.
94/90		COOK	29	15
STA.		TO STA.		
FED. ROAD DIST. NO.	ILLINOIS	FED. AID PROJECT		
62993		2324.6-1P-1-1		

DETAIL A REINFORCEMENT SCHEDULE AND BILL OF MATERIAL

Bar	No.	Size	Length	Shape
h(E)	8	#4	7'-8"	—
h1(E)	8	#4	3'-8"	—
h2(E)	2	#4	4'-0"	L
n(E)	13	#6	5'-6"	L
n1(E)	4	#5	5'-10"	L
n2(E)	9	#5	4'-0"	L
t(E)	10	#6	3'-8"	—
w(E)	4	#4	8'-8"	—
Item		Unit	Qty.	
① Concrete Structures		Cu. Yd.	1.5	
② Concrete Superstructure		Cu. Yd.	1.5	
Reinforcement Bars, Epoxy Coated		Pound	320	
Rustication Finish		Sq. Ft.	6	
Protective Coat		Sq. Yd.	6	



- NOTES:**
- All stations and offsets measured from S. La Salle St. \perp .
 - Concrete: $f'c = 3500$ psi
 - Provide California Finish on top of foundation between stem and Frontage Road. See Roadway Details.
 - At locations where Fluted Knee Wall abuts a rigid Structure, a 1" thick Preformed Expansion Joint Filler conforming to the shape of the Structure shall be installed between the Wall and the Structure.
 - Apply Protective Coat to top and front face of stem and top of Frontage Road side of foundation.
 - For Fluted Knee Wall standard details, see Sheet SD-1
 - B.F. = Back Face (Frontage Road Side)
F.F. = Front Face (Expressway Side)
E.F. = Each Face
 - Saw cut sidewalk along removal line full depth to provide neat line.
 - Shape finished grade as required to match existing conditions.
 - P.J.F. included in cost of concrete structures.

REVISIONS	
NAME	DATE
REVISED	3-6-08

SHEET SD-2

ILLINOIS DEPARTMENT OF TRANSPORTATION
F.A.I. 94/90 (DAN RYAN EXPRESSWAY)
NORTHBOUND KNEE WALLS (35TH ST TO 33RD ST)

DETAIL A

SCALE: N.T.S. DRAWN BY: PAH
DATE: 03/06/08 CHECKED BY: BLU

BOWMAN, BARRETT & ASSOCIATES INC.
CONSULTING ENGINEERS
Chicago, Illinois
312.228.0100
www.bbainc.com

4/9/20 PM 3/6/2008