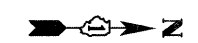
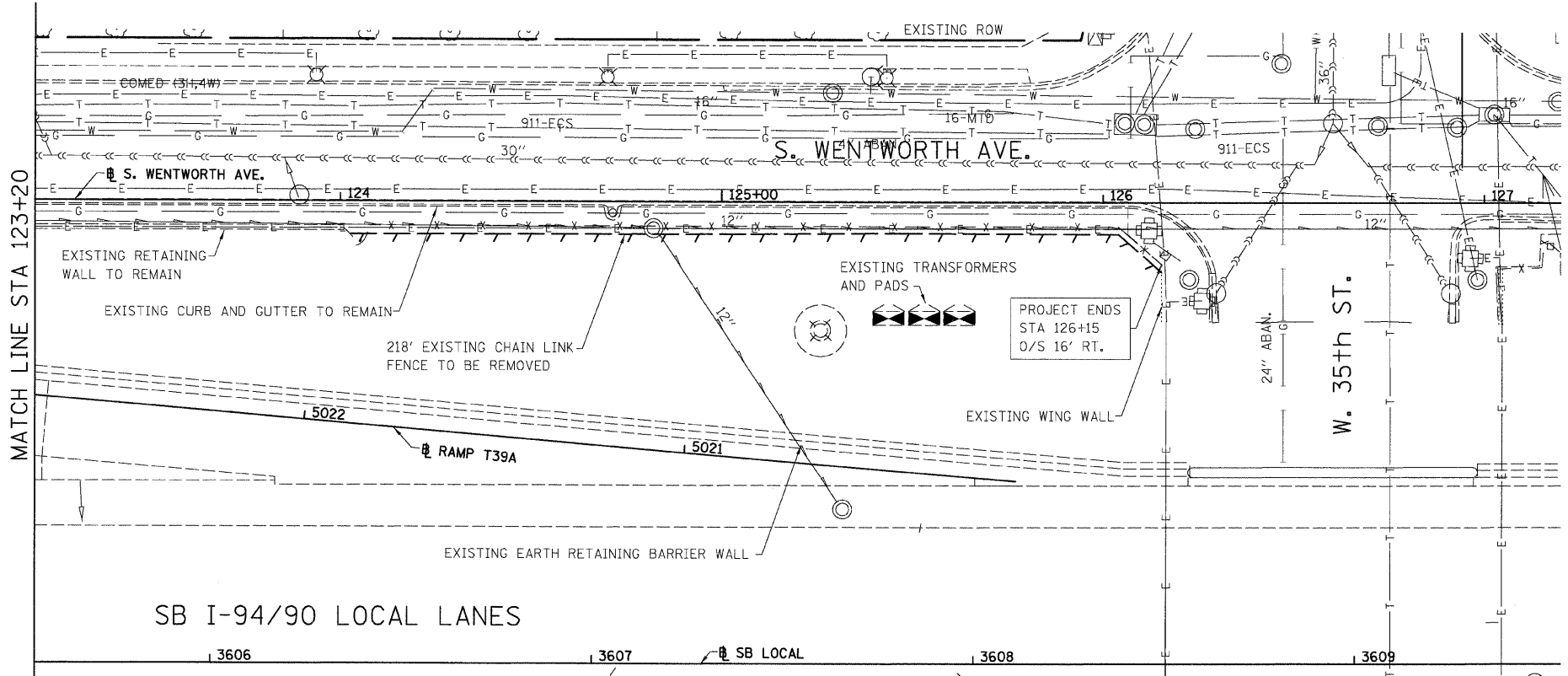
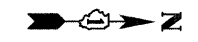
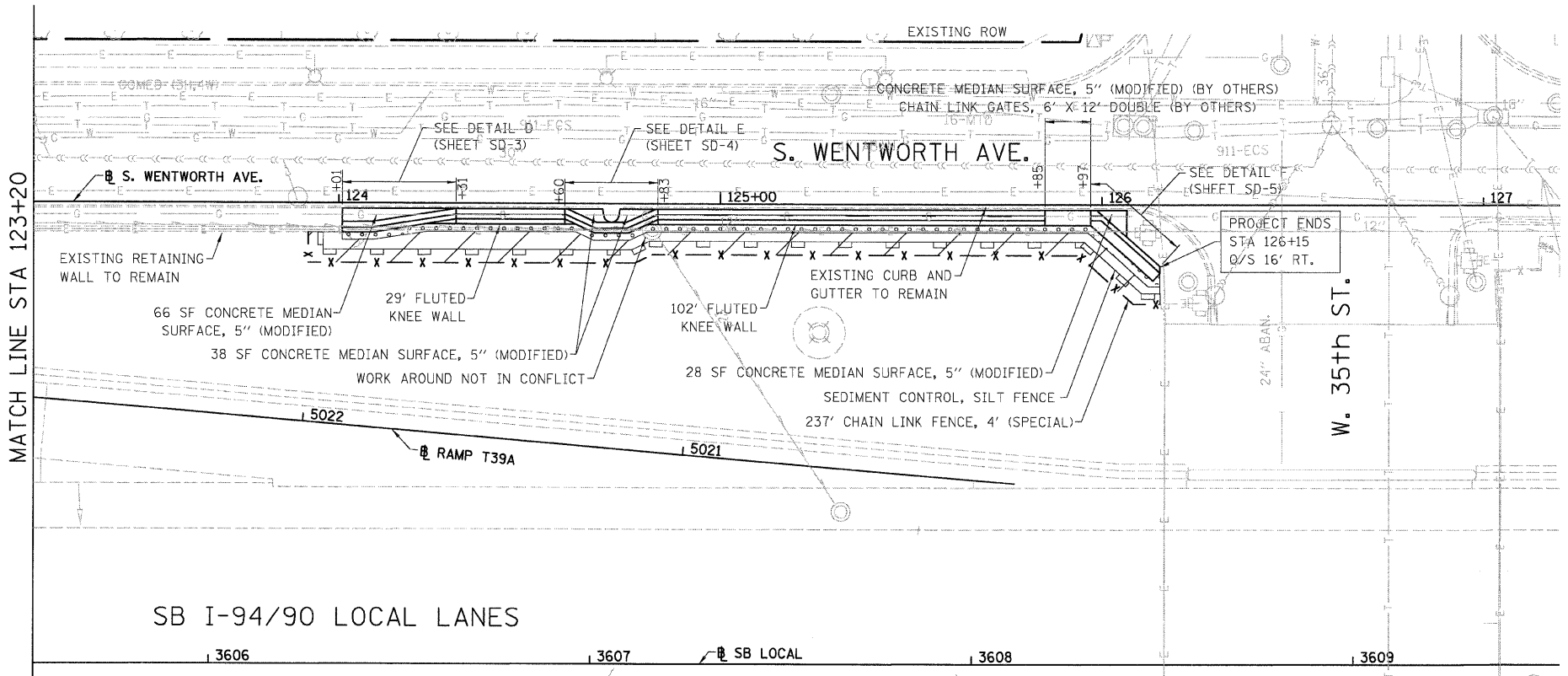


F.A.I.	SECTION	COUNTY	TOTAL SHEETS	SHEET NO.
94/90		COOK	38	16
STA.	TO STA.			
FED. ROAD DIST. NO.	ILLINOIS	FED. AID PROJECT		
62998	• (2323.6-2P&2324.6-1P)1-3			



LEGEND:
 LINEAR REMOVALS

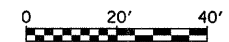
EXISTING CONDITIONS AND REMOVAL
 PROPOSED IMPROVEMENTS



LEGEND:

- GROUND PREPARATION FOR SEEDING, CLASS 2A EROSION CONTROL BLANKET
- GROUND PREPARATION FOR SEEDING, CLASS 4 (MODIFIED) SEEDING, CLASS 5A (MODIFIED) EROSION CONTROL BLANKET
- TOPSOIL FURNISH AND PLACE, 4" SEEDING, CLASS 2A EROSION CONTROL BLANKET
- TOPSOIL FURNISH AND PLACE, 12" SEEDING, CLASS 2A EROSION CONTROL BLANKET
- TOPSOIL FURNISH AND PLACE, 12" SEEDING, CLASS 4 (MODIFIED) SEEDING, CLASS 5A (MODIFIED) EROSION CONTROL BLANKET

- NOTES:
- SEE STRUCTURAL DETAIL FOR FLUTED KNEE WALL DETAILS.
 - ALL POINT CALLOUTS ARE TAKEN AT THE EDGE OF THE KNEE WALL BASE.



REVISIONS	
NAME	DATE
REVISED	3-6-08

ILLINOIS DEPARTMENT OF TRANSPORTATION
 F.A.I. 94/90 (DAN RYAN EXPRESSWAY)
 SOUTHBOUND KNEE WALLS (PERSHING RD TO 35TH ST)

EXISTING AND PROPOSED
 KNEE WALL PLANS

SCALE: 1"=20'
 DATE: 03/06/08

DRAWN BY: JDC
 CHECKED BY: DDM

BOWMAN, BARRETT & ASSOCIATES INC.
 CONSULTING ENGINEERS
 Chicago, Illinois
 312.228.0100
 www.bbainc.com

N:\6200\9409\9409\320\320\SHEETS\9409_320CCL1491