

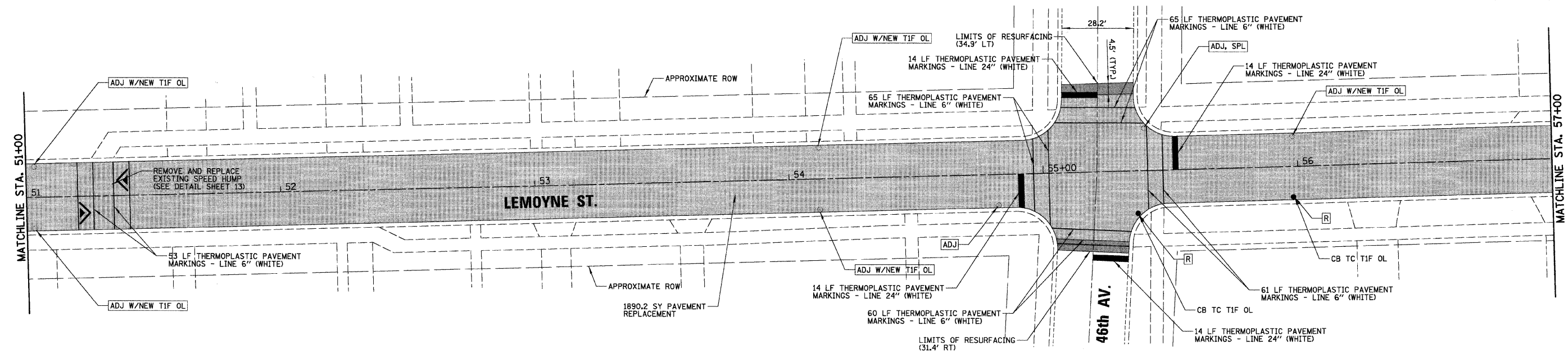
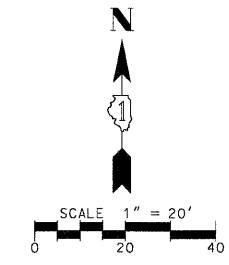
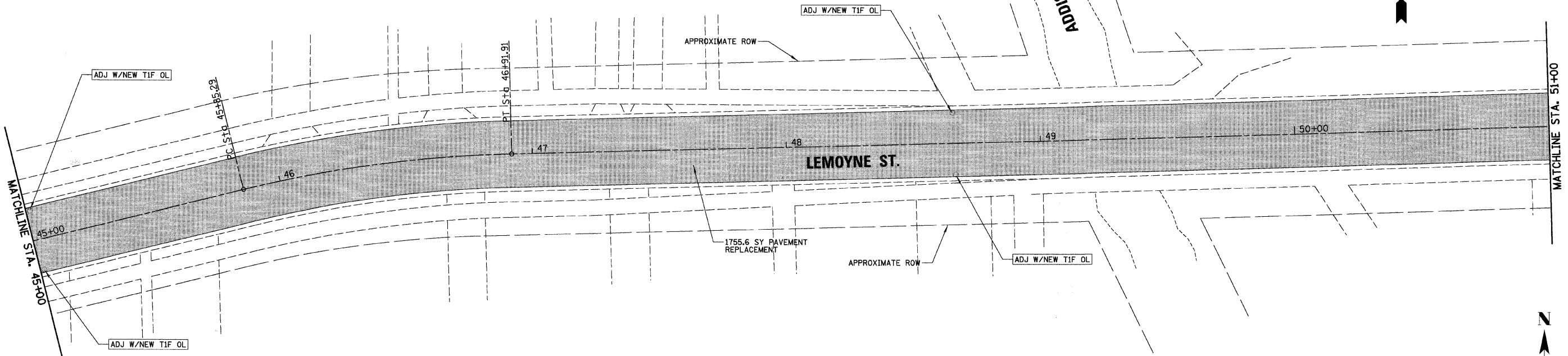
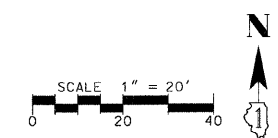
DATE: \_\_\_\_\_ BY: \_\_\_\_\_  
 SURVEYED: \_\_\_\_\_  
 PLAN: \_\_\_\_\_  
 NOTE BOOK: \_\_\_\_\_  
 NO.: \_\_\_\_\_

CHRISTOPHER B. BURKE ENGINEERING LTD.  
 9575 West Higgins Road, Suite 600  
 Rosemont, Illinois 60018  
 (847) 923-0500

DATE: \_\_\_\_\_ BY: \_\_\_\_\_  
 SURVEYED: \_\_\_\_\_  
 PROFILE: \_\_\_\_\_  
 NOTE BOOK: \_\_\_\_\_  
 NO.: \_\_\_\_\_

|                     |                |                  |                  |           |
|---------------------|----------------|------------------|------------------|-----------|
| F.A. RTE.           | SECTION        | COUNTY           | TOTAL SHEETS     | SHEET NO. |
| 1678                | 07-00064-00-RS | COOK             | 17               | 8         |
| STA. 45+00.00       |                | TO STA. 57+00.00 |                  |           |
| FED. ROAD DIST. NO. |                | ILLINOIS         | FED. AID PROJECT |           |

CONTRACT NO. 63009



- LEGEND:**
- PAVEMENT REPLACEMENT
    - HOT-MIX ASPHALT SURFACE REMOVAL, 3 1/4"
    - HOT-MIX ASPHALT SURFACE COURSE MIX "C", N50 (OC/QA), 1 1/2"
    - LEVELING BINDER (MACHINE METHOD) N50, (OC/QA), 1 3/4"
  - DRAINAGE STRUCTURE TO BE ADJUSTED
  - DRAINAGE STRUCTURE ADJUSTMENT (SPECIAL)
  - DRAINAGE STRUCTURE TO BE REMOVED
  - HMA SURFACE REMOVAL - BUTT JOINT

| REVISIONS |      |
|-----------|------|
| NAME      | DATE |
|           |      |
|           |      |
|           |      |
|           |      |
|           |      |

ILLINOIS DEPARTMENT OF TRANSPORTATION

PROPOSED PLAN  
 CITY OF NORTHLAKE  
 LEMOYNE STREET

SCALE 1" = 20'  
 DATE 1/2/2008

DRAWN BY EDT  
 CHECKED BY MW