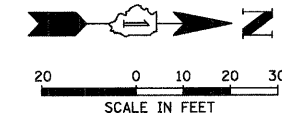


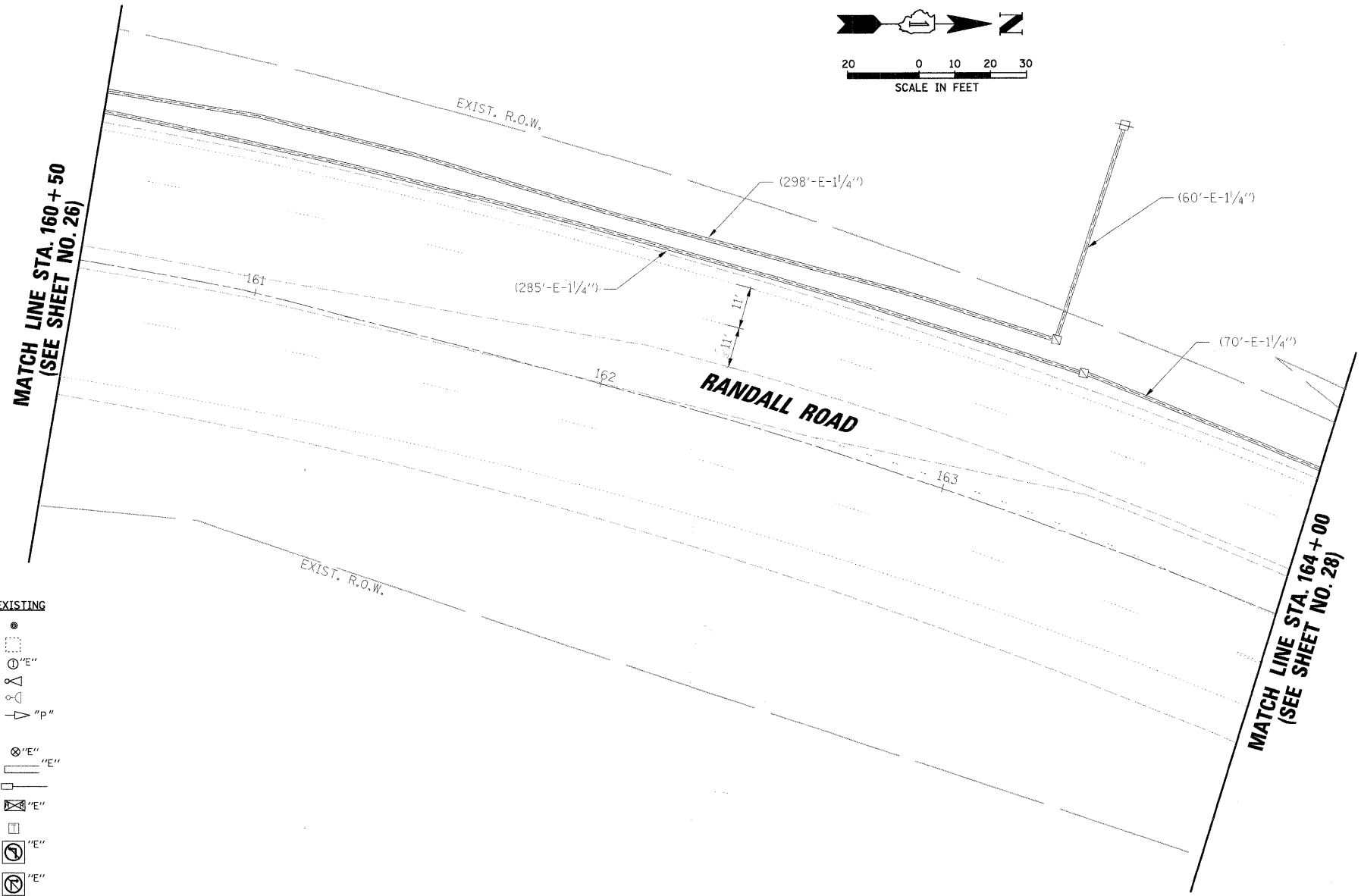
RESTORATION OF WORK AREA. RESTORATION OF THE TRAFFIC SIGNAL WORK AREA SHALL BE INCIDENTAL TO THE RELATED PAY ITEM SUCH AS FOUNDATION, CONDUIT, HANDHOLE, TRENCH AND BACKFILL, ETC., AND NO EXTRA COMPENSATION SHALL BE ALLOWED. ALL ROADWAY SURFACES SUCH AS SHOULDERS, MEDIANS, SIDEWALKS, PAVEMENT, ETC. SHALL BE REPLACED IN KIND. ALL DAMAGE TO MOWED LAWNS SHALL BE REPLACED WITH AN APPROVED SOD, AND ALL DAMAGE TO UNMOWED FIELDS SHALL BE SEEDING IN ACCORDANCE WITH STANDARD SPECIFICATIONS 252 AND 250 RESPECTIVELY.

NOTE:  
THE TRAFFIC SIGNAL CONTROLLER EQUIPMENT FOR THIS PROJECT SHALL BE "EAGLE" TO MATCH THE EXISTING ADJACENT SYSTEM.



MATCH LINE STA. 160+50  
(SEE SHEET NO. 26)

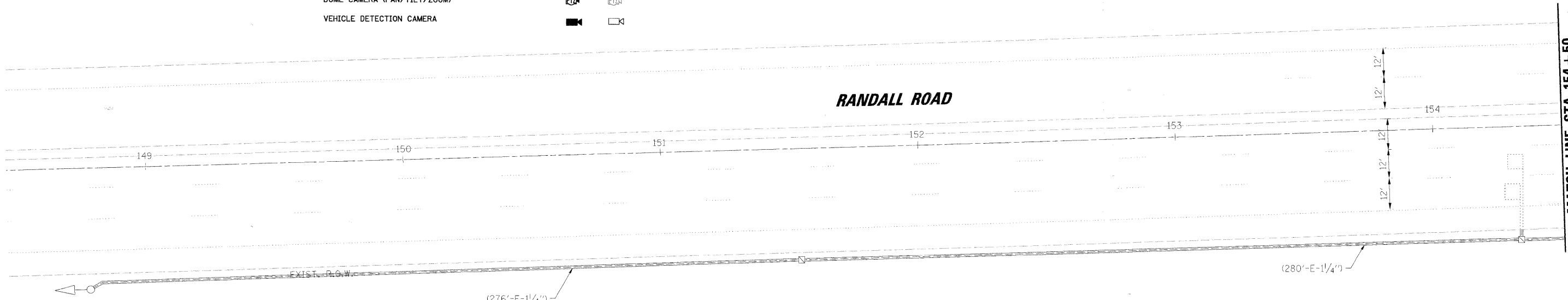
MATCH LINE STA. 164+00  
(SEE SHEET NO. 28)



TRAFFIC SIGNAL LEGEND

	PROPOSED	EXISTING		PROPOSED	EXISTING
CONTROLLER CABINET			PEDESTRIAN PUSHBUTTON DETECTOR		
SERVICE INSTALLATION			DETECTOR LOOP		
SIGNAL HEAD			CAST IRON JUNCTION BOX		
SIGNAL HEAD WITH BACKPLATE			EMERGENCY VEHICLE LIGHT DETECTOR		
SIGNAL HEAD, PEDESTRIAN			CONFIRMATION BEACON		
SIGNAL POST			SIGNAL HEAD OPTICALLY PROGRAMMED		
MAST ARM ASSEMBLY AND POLE, STEEL			CONDUIT SPLICE		
MAST ARM ASSEMBLY AND POLE, ALUMINUM			WOOD POLE		
COMBINATION MAST ARM ASSEMBLY AND POLE, STEEL WITH LUMINAIRE			RACEWAY FOR MAGNETIC DETECTOR, TYPE I OR TYPE II		
UNIT DUCT			VEHICLE DETECTOR, NON COMPENSATED MAGNETIC TYPE		
COMMON TRENCH			RAILROAD CONTROL CABINET		
HANDHOLE			TELEPHONE CONNECTION		
HEAVY DUTY HANDHOLE			ILLUMINATED SIGN "NO LEFT TURN"		
DOUBLE HANDHOLE			ILLUMINATED SIGN "NO RIGHT TURN"		
G.S. CONDUIT IN TRENCH (T) OR PUSHED (P)			UNINTERRUPTABLE POWER SUPPLY		
			DOME CAMERA (PAN/TILT/ZOOM)		
			VEHICLE DETECTION CAMERA		

RANDALL ROAD



MATCH LINE STA. 154+50  
(SEE SHEET NO. 26)

DATE	BY	DATE	BY
DATE	BY	DATE	BY

CHRISTOPHER B. BURKE ENGINEERING LTD.  
315 West Higgins Road, Suite 600  
Bloomington, IL 61808  
(847) 823-0600

DATE	BY	DATE	BY
DATE	BY	DATE	BY

FILE NAME =	USER NAME = MWILLIAM	DESIGNED -	REVISED -
N:\kanecounty\8786161\Traffic\4002.28\4b.dgn		DRAWN -	REVISED -
		CHECKED -	REVISED -
		DATE -	REVISED -

STATE OF ILLINOIS  
DEPARTMENT OF TRANSPORTATION

TRAFFIC SIGNAL MODIFICATION PLAN  
RANDALL ROAD AT U.S. 20 RAMPS A & B (FOOTHILL RD.)

F.A.P. RTE. 336	SECTION 06-00346-00-TL	COUNTY KANE	TOTAL SHEETS 69	SHEET NO. 27
CONTRACT NO. 63011			ILLINOIS FED. AID PROJECT	