

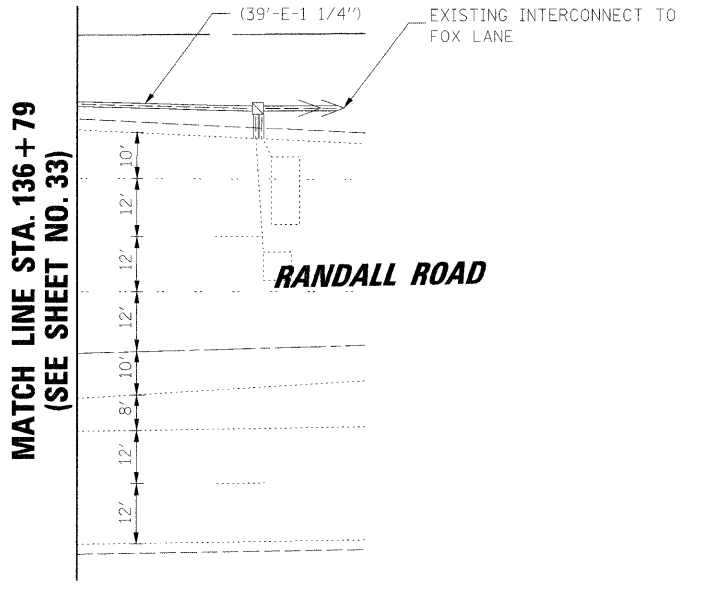
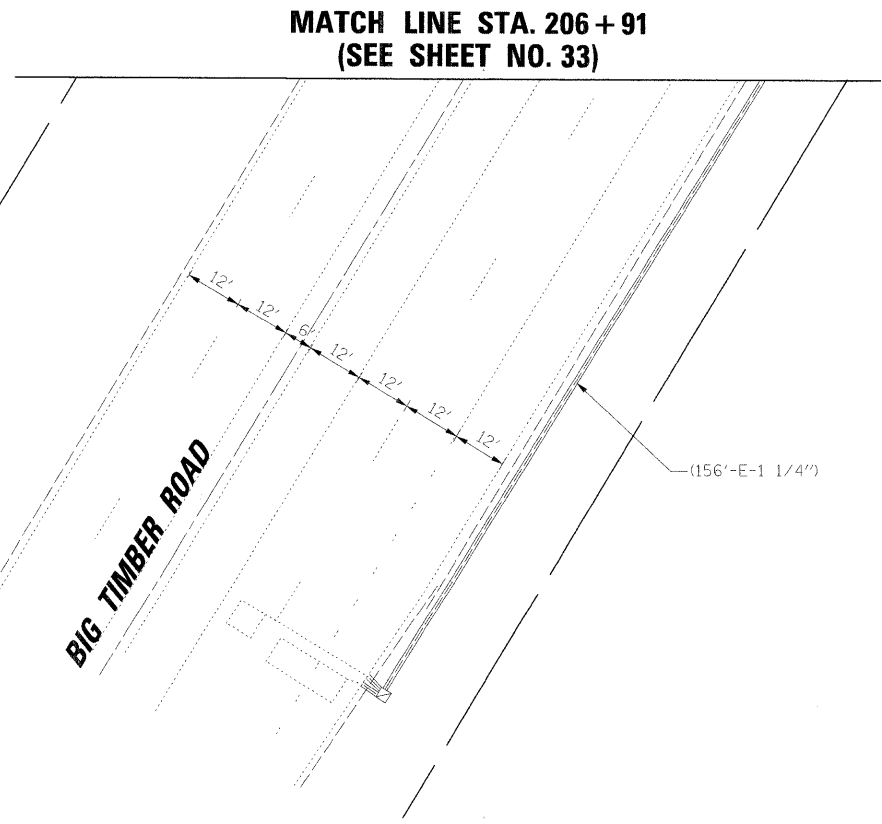
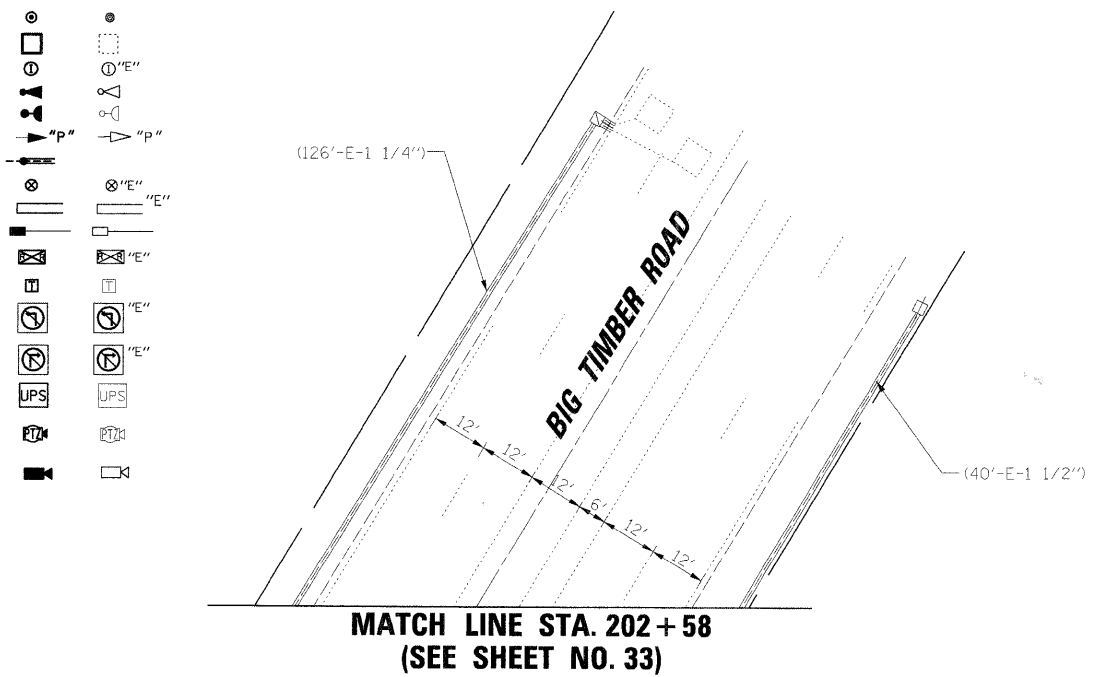
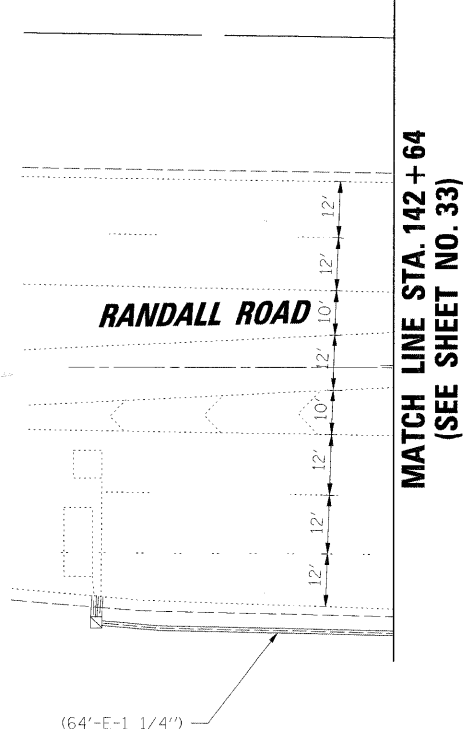
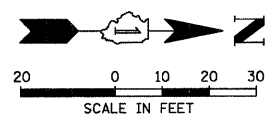
DATE	BY	DATE	BY
SURVEYED		SURVEYED	
GRADES CHECKED		GRADES CHECKED	
STRUCTURE NO./DATE/NS/DR/D		STRUCTURE NO./DATE/NS/DR/D	
NO.		NO.	
NOTE BOOK		NOTE BOOK	
NO.		NO.	
PLAN		PLAN	
NO.		NO.	
SURVEYED		SURVEYED	
ALIGNMENT CHECKED		ALIGNMENT CHECKED	
RT. OF WAY CHECKED		RT. OF WAY CHECKED	
JOB FILE NAME		JOB FILE NAME	

CHRISTOPHER B. BURKE ENGINEERING LTD.
 3575 West Higgins Road, Suite 600
 Chicago, Illinois 60638
 (847) 823-0500

DATE	BY
SURVEYED	
GRADES CHECKED	
STRUCTURE NO./DATE/NS/DR/D	
NO.	
NOTE BOOK	
NO.	
PROFILE	
NO.	

TRAFFIC SIGNAL LEGEND

PROPOSED	EXISTING	PROPOSED	EXISTING
CONTROLLER CABINET	[Symbol]	PEDESTRIAN PUSHBUTTON DETECTOR	[Symbol]
SERVICE INSTALLATION	[Symbol]	DETECTOR LOOP	[Symbol]
SIGNAL HEAD	[Symbol]	CAST IRON JUNCTION BOX	[Symbol]
SIGNAL HEAD WITH BACKPLATE	[Symbol]	EMERGENCY VEHICLE LIGHT DETECTOR	[Symbol]
SIGNAL HEAD, PEDESTRIAN	[Symbol]	CONFIRMATION BEACON	[Symbol]
SIGNAL POST	[Symbol]	SIGNAL HEAD OPTICALLY PROGRAMMED	[Symbol]
MAST ARM ASSEMBLY AND POLE, STEEL	[Symbol]	CONDUIT SPLICE	[Symbol]
MAST ARM ASSEMBLY AND POLE, ALUMINUM	[Symbol]	WOOD POLE	[Symbol]
COMBINATION MAST ARM ASSEMBLY AND POLE, STEEL WITH LUMINAIRE	[Symbol]	RACEWAY FOR MAGNETIC DETECTOR, TYPE I OR TYPE II	[Symbol]
UNIT DUCT	[Symbol]	VEHICLE DETECTOR, NON COMPENSATED MAGNETIC TYPE	[Symbol]
COMMON TRENCH	[Symbol]	RAILROAD CONTROL CABINET	[Symbol]
HANDHOLE	[Symbol]	TELEPHONE CONNECTION	[Symbol]
HEAVY DUTY HANDHOLE	[Symbol]	ILLUMINATED SIGN "NO LEFT TURN"	[Symbol]
DOUBLE HANDHOLE	[Symbol]	ILLUMINATED SIGN "NO RIGHT TURN"	[Symbol]
G.S. CONDUIT IN TRENCH (T) OR PUSHED (P)	[Symbol]	UNINTERRUPTABLE POWER SUPPLY	[Symbol]
		DOME CAMERA (PAN/TILT/ZOOM)	[Symbol]
		VEHICLE DETECTION CAMERA	[Symbol]



NOTE:
 THE TRAFFIC SIGNAL CONTROLLER EQUIPMENT FOR THIS PROJECT SHALL BE "EAGLE" TO MATCH THE EXISTING ADJACENT SYSTEM.

RESTORATION OF WORK AREA. RESTORATION OF THE TRAFFIC SIGNAL WORK AREA SHALL BE INCIDENTAL TO THE RELATED PAY ITEM SUCH AS FOUNDATION, CONDUIT, HANDHOLE, TRENCH AND BACKFILL, ETC., AND NO EXTRA COMPENSATION SHALL BE ALLOWED. ALL ROADWAY SURFACES SUCH AS SHOULDERS, MEDIANS, SIDEWALKS, PAVEMENT, ETC. SHALL BE REPLACED IN KIND. ALL DAMAGE TO MOWED LAWNS SHALL BE REPLACED WITH AN APPROVED SOD, AND ALL DAMAGE TO UNMOWED FIELDS SHALL BE SEEDED IN ACCORDANCE WITH STANDARD SPECIFICATIONS 252 AND 250 RESPECTIVELY.

FILE NAME =	USER NAME = MWILLIAM	DESIGNED -	REVISED -	STATE OF ILLINOIS DEPARTMENT OF TRANSPORTATION	TRAFFIC SIGNAL MODIFICATION PLAN RANDALL ROAD AT BIG TIMBER ROAD	F.A.P. RTE. =	SECTION	COUNTY	TOTAL SHEETS	SHEET NO.
N:\kane\county\070616\Traffic\MO02_BigTimber.dgn		DRAWN -	REVISED -			336	06-00346-00-TL	KANE	69	34
PLOT SCALE = 20'		CHECKED -	REVISED -			CONTRACT NO. 63011				
PLOT DATE = 1/28/2008		DATE -	REVISED -			FED. ROAD DIST. NO.	ILLINOIS	FED. AID PROJECT		