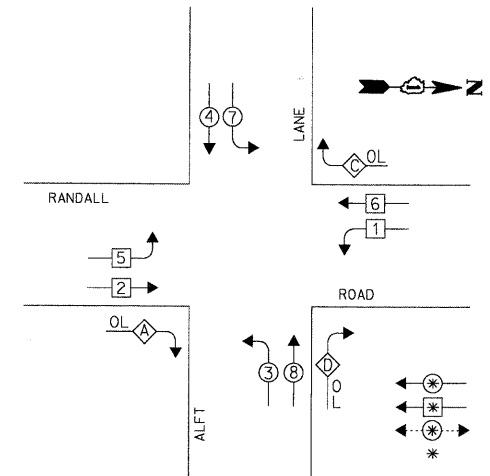


CONTROLLER SEQUENCE

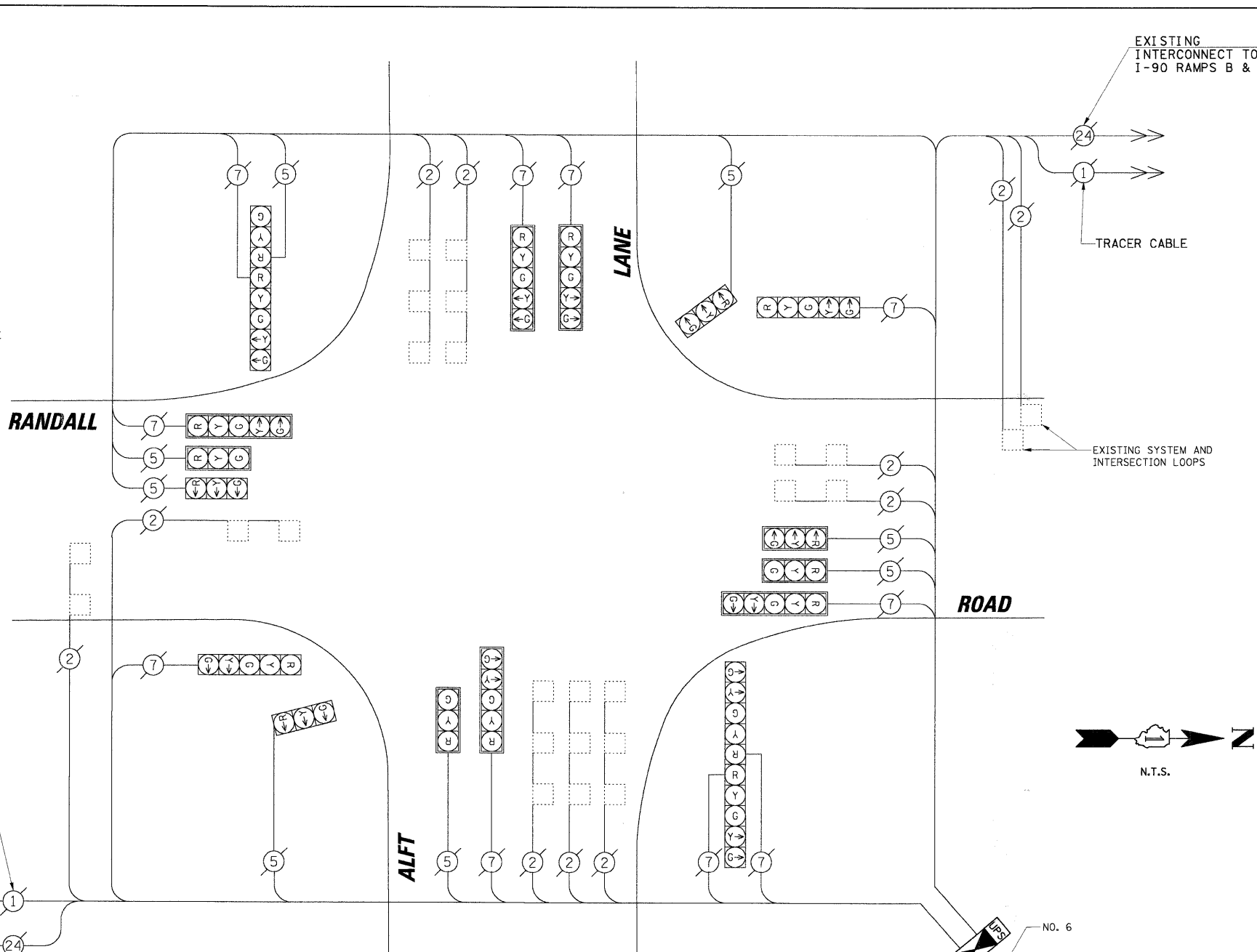


LEGEND
 * DUAL ENTRY PHASE
 ◀ SINGLE ENTRY PHASE
 ◀ PEDESTRIAN PHASE
 * NUMBER REFERS TO ASSOCIATED PHASE

PHASE DESIGNATION DIAGRAM

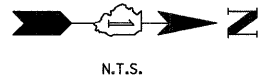
OVERLAP LETTER	PROTECTED PHASE	PERMISSIVE PHASE
A =	3 +	2
C =	7 +	6
D =	1 +	8

RESTORATION OF WORK AREA. RESTORATION OF THE TRAFFIC SIGNAL WORK AREA SHALL BE INCIDENTAL TO THE RELATED PAY ITEM SUCH AS FOUNDATION, CONDUIT, HANDHOLE, TRENCH AND BACKFILL, ETC., AND NO EXTRA COMPENSATION SHALL BE ALLOWED. ALL ROADWAY SURFACES SUCH AS SHOULDERS, MEDIANS, SIDEWALKS, PAVEMENT, ETC. SHALL BE REPLACED IN KIND. ALL DAMAGE TO MOWED LAWNS SHALL BE REPLACED WITH AN APPROVED SOD, AND ALL DAMAGE TO UNMOWED FIELDS SHALL BE SEEDED IN ACCORDANCE WITH STANDARD SPECIFICATIONS 252 AND 250 RESPECTIVELY.



CABLE PLAN LEGEND

EXISTING	PROPOSED	DESCRIPTION
(Symbol)	(Symbol)	8" (200mm) TRAFFIC SIGNAL SECTION
(Symbol)	(Symbol)	12" (300mm) TRAFFIC SIGNAL SECTION
(Symbol)	(Symbol)	12" (300mm) PEDESTRIAN SIGNAL SECTION
(Symbol)	(Symbol)	12" (300mm) PEDESTRIAN SIGNAL SECTION
(Symbol)	(Symbol)	CONTROLLER CABINET
(Symbol)	(Symbol)	SERVICE INSTALLATION
(Symbol)	(Symbol)	TELEPHONE INSTALLATION
(Symbol)	(Symbol)	VEHICLE DETECTOR, INDUCTION LOOP
(Symbol)	(Symbol)	MAGNETIC DETECTOR
(Symbol)	(Symbol)	EMERGENCY VEHICLE LIGHT DETECTOR
(Symbol)	(Symbol)	CONFIRMATION BEACON
(Symbol)	(Symbol)	PUSHBUTTON DETECTOR
(Symbol)	(Symbol)	DENOTES NUMBER OF CONDUCTORS. ALL CABLE NO. 14 EXCEPT AS INDICATED. ALL LOOP DETECTOR CABLE TO BE SHIELDED.
(Symbol)	(Symbol)	GROUND CABLE IN CONDUIT NO. 6 SOLID COPPER (GREEN)
(Symbol)	(Symbol)	FIBER OPTIC CABLE IN CONDUIT NO. 62.5/125 2-MM12F SM12F
(Symbol)	(Symbol)	FIBER OPTIC CABLE IN CONDUIT NO. 62.5/125 2-MM12F SM24F
(Symbol)	(Symbol)	SIGNAL FACE WITH BACKPLATE. "P" INDICATES PROGRAMMED HEAD.
(Symbol)	(Symbol)	RAILROAD CONTROL CABINET
(Symbol)	(Symbol)	ILLUMINATED SIGN "NO LEFT TURN"
(Symbol)	(Symbol)	ILLUMINATED SIGN "NO RIGHT TURN"
(Symbol)	(Symbol)	GROUND ROD AT HANDHOLE (H), DOUBLE HANDHOLE (H), OR CONTROLLER (C)
(Symbol)	(Symbol)	GROUND ROD AT POST (P) OR MAST ARM POLE (MA)
(Symbol)	(Symbol)	GROUND ROD AT ELECTRIC SERVICE INSTALLATION
(Symbol)	(Symbol)	UNINTERRUPTIBLE POWER SUPPLY
(Symbol)	(Symbol)	VENDOR SPECIFIC CABLE
(Symbol)	(Symbol)	DOMI CAMERA (PAN/TILT/ZOOM)
(Symbol)	(Symbol)	VIDEO DETECTION CAMERA



SCHEDULE OF QUANTITIES

ITEM	UNIT	TOTAL
MAINTENANCE OF EXISTING TRAFFIC SIGNAL INSTALLATION	EACH	1
FULL-ACTUATED CONTROLLER AND TYPE IV CABINET, SPECIAL	EACH	1
INDUCTIVE LOOP DETECTOR	EACH	11
REMOVE EXISTING TRAFFIC SIGNAL EQUIPMENT	EACH	1
UNINTERRUPTIBLE POWER SUPPLY	EACH	1
ETHERNET KIT	EACH	1

I.D.O.T. TRAFFIC SIGNAL INSTALLATION ELECTRICAL SERVICE REQUIREMENTS

TYPE	NO. OF LAMPS	WATTAGE X INCAND.	LED X % OPERATION	TOTAL WATTAGE
SIGNAL (RED)	18	17	0.50	153.00
(YELLOW)	18	25	0.25	112.50
(GREEN)	18	15	0.25	67.5
ARROW	20	12	0.10	24.00
PED. SIGNAL	-	25	1.00	-
CONTROLLER	1	100	1.00	100.00
ILLUM. SIGN	-	25	0.05	-
VIDEO SYSTEM	-	-	1.00	-
FLASHER	-	-	0.50	-

ENERGY COSTS TO: TOTAL = 457.00
 KANE COUNTY DIVISION OF TRANSPORTATION
 41W011 BURLINGTON ROAD
 ST. CHARLES, IL 60175
 ENERGY SUPPLY: CONTACT: MIKE WIDHALM
 PHONE: (847) 608-2376
 COMPANY: COMED

FOUNDATION (DEPTH)	FT. (m)	CABLE SLACK	FT. (m)	VERTICAL	FT. (m)
TYPE A - POST	4 (1.2)	HANDHOLE	6.5 (2.0)	ALL FOUNDATIONS	3.5 (1.0)
D - CONTROLLER	4 (1.2)	DOUBLE HANDHOLE	13 (4.0)	MAST ARM (L) POLE	20'+L-2=
E - M. ARM POLE		SIGNAL POST	2 (1.0)	(6m+L-0.6m)=	
24" (600mm)	10 (3.0)	CONTROLLER CAB.	1 (0.5)	BRACKET MOUNTED	13 (4.0)
30" (750mm)	15 (4.6)	FIBER OPTIC	13 (4.0)	PED. PUSHBUTTON	4 (1.2)
36" (900mm)	15 (4.6)	ELECTRIC SERVICE	1 (0.5)	ELECTRIC SERVICE	13.5 (4.1)
		GROUND CABLE	1 (0.5)	SERVICE TO GROUND	13.5 (4.1)
				POST MOUNTED	6 (1.8)

NOTE:
 THE TRAFFIC SIGNAL CONTROLLER EQUIPMENT FOR THIS PROJECT SHALL BE "EAGLE" TO MATCH THE EXISTING ADJACENT SYSTEM.

- CONSTRUCTION NOTES:
- REMOVE EXISTING CABINET AND CONTROLLER. INSTALL NEW CONTROLLER AND TYPE IV CABINET ON EXISTING FOUNDATION.
 - INSTALL ETHERNET KIT.
 - INSTALL UPS UNIT IN SIDE MOUNTED CABINET ATTACHED TO TRAFFIC SIGNAL CABINET.

THE FOLLOWING ITEMS SHALL BE REMOVED BY THE CONTRACTOR AND SHALL BE DISPOSED OF BY THEM OUTSIDE THE RIGHT-OF-WAY AT THEIR EXPENSE. THE SALVAGE VALUE OF THE REMOVED EQUIPMENT SHALL BE REFLECTED IN THE CONTRACT BID PRICE.

1 EACH CONTROLLER AND CABINET (COMPLETE)

PROFILE SURVEYED BY: CHRISTOPHER B. BURKE
 GRADES CHECKED BY: MICHAEL J. HIGGINS
 STRUCTURE NOTATIONS CHECKED BY: MICHAEL J. HIGGINS
 DATE: 1/28/2008
 PLAN NO.: 06-00346-00-TL
 SHEET NO.: 37
 I.D.O.T. PROJECT NO.: 06-00346-00-TL
 CONTRACT NO.: 63011
 DATE: 1/28/2008

STATE OF ILLINOIS
 DEPARTMENT OF TRANSPORTATION

CABLE PLAN
 RANDALL ROAD AT ALFT LANE

F.A.P. RTE.	SECTION	COUNTY	TOTAL SHEETS	SHEET NO.
336	06-00346-00-TL	KANE	69	37

CONTRACT NO. 63011