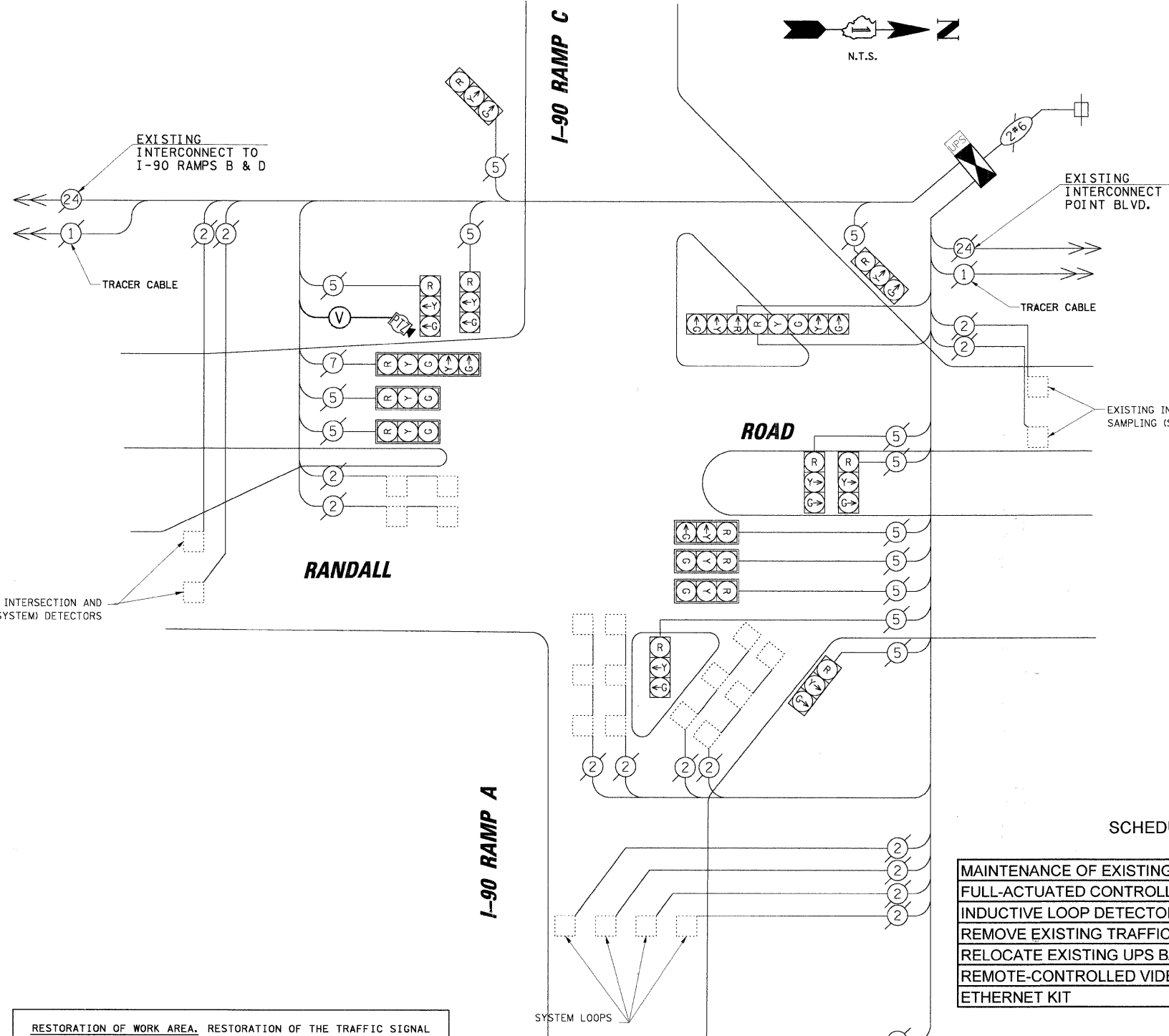
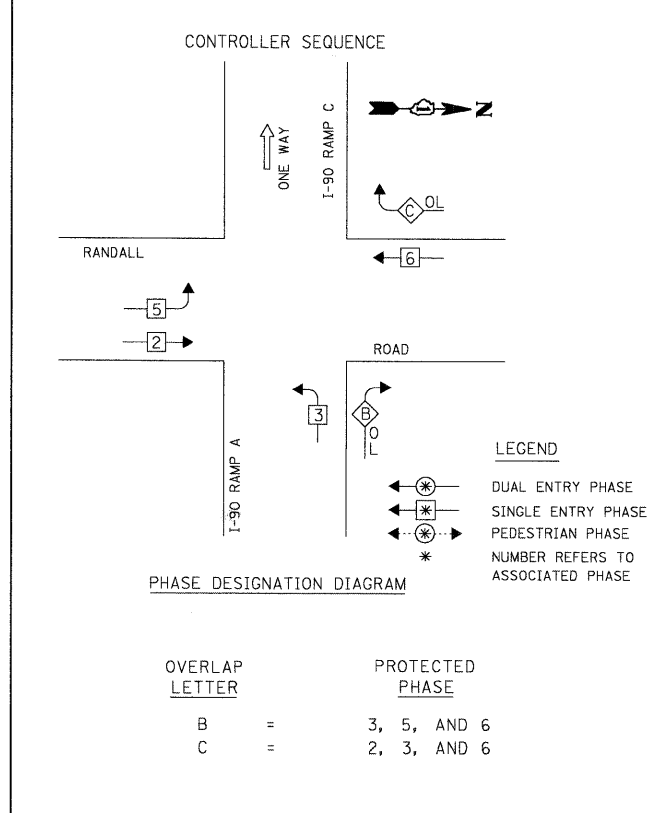


DATE: _____ BY: _____
 SURVIVED: _____
 GRADES CHECKED: _____
 STRUCTURE NOTATIONS CHECKED: _____
 PROFILE: _____

CHRISTOPHER B. BURKE ENGINEERING LTD.
 3575 West Higgins Road, Suite 600
 Chicago, Illinois 60638
 (847) 823-0500

DATE: _____ BY: _____
 SURVIVED: _____
 GRADES CHECKED: _____
 STRUCTURE NOTATIONS CHECKED: _____
 PROFILE: _____



CABLE PLAN LEGEND

EXISTING	PROPOSED	DESCRIPTION
(Symbol)	(Symbol)	8" (200mm) TRAFFIC SIGNAL SECTION
(Symbol)	(Symbol)	12" (300mm) TRAFFIC SIGNAL SECTION
(Symbol)	(Symbol)	12" (300mm) PEDESTRIAN SIGNAL SECTION
(Symbol)	(Symbol)	12" (300mm) PEDESTRIAN SIGNAL SECTION
(Symbol)	(Symbol)	CONTROLLER CABINET SERVICE INSTALLATION
(Symbol)	(Symbol)	TELEPHONE INSTALLATION
(Symbol)	(Symbol)	VEHICLE DETECTOR, INDUCTION LOOP
(Symbol)	(Symbol)	MAGNETIC DETECTOR
(Symbol)	(Symbol)	EMERGENCY VEHICLE LIGHT DETECTOR
(Symbol)	(Symbol)	CONFIRMATION BEACON
(Symbol)	(Symbol)	PUSHBUTTON DETECTOR
(Symbol)	(Symbol)	2 DENOTES NUMBER OF CONDUCTORS. ALL CABLE NO. 14 EXCEPT AS INDICATED. ALL LOOP DETECTOR CABLE TO BE SHIELDED.
(Symbol)	(Symbol)	1 GROUND CABLE IN CONDUIT NO. 6 SOLID COPPER (GREEN)
(Symbol)	(Symbol)	24 FIBER OPTIC CABLE IN CONDUIT NO. 62.5/125 2-MM12F SM12F
(Symbol)	(Symbol)	36 FIBER OPTIC CABLE IN CONDUIT NO. 62.5/125 2-MM12F SM24F
(Symbol)	(Symbol)	SIGNAL FACE WITH BACKPLATE. "P" INDICATES PROGRAMMED HEAD.
(Symbol)	(Symbol)	RAILROAD CONTROL CABINET
(Symbol)	(Symbol)	ILLUMINATED SIGN "NO LEFT TURN"
(Symbol)	(Symbol)	ILLUMINATED SIGN "NO RIGHT TURN"
(Symbol)	(Symbol)	GROUND ROD AT HANDHOLE (H), DOUBLE HANDHOLE (H), OR CONTROLLER (C)
(Symbol)	(Symbol)	GROUND ROD AT POST (P) OR MAST ARM POLE (MA)
(Symbol)	(Symbol)	GROUND ROD AT ELECTRIC SERVICE INSTALLATION
(Symbol)	(Symbol)	UNINTERRUPTIBLE POWER SUPPLY
(Symbol)	(Symbol)	VENDOR SPECIFIC CABLE
(Symbol)	(Symbol)	DOME CAMERA (PAN/TILT/ZOOM)
(Symbol)	(Symbol)	VIDEO DETECTION CAMERA

NOTE:
 THE TRAFFIC SIGNAL CONTROLLER EQUIPMENT FOR THIS PROJECT SHALL BE "EAGLE" TO MATCH THE EXISTING ADJACENT SYSTEM.

I.D.O.T. TRAFFIC SIGNAL INSTALLATION ELECTRICAL SERVICE REQUIREMENTS

TYPE	NO. OF LAMPS	WATTAGE	% OPERATION	TOTAL WATTAGE
SIGNAL (RED)	16	17	0.50	136.00
(YELLOW)	16	25	0.25	100.00
(GREEN)	16	15	0.25	60.00
ARROW	4	12	0.10	4.80
PED. SIGNAL	-	25	1.00	-
CONTROLLER	1	100	1.00	100.00
ILLUM. SIGN	-	25	0.05	-
VIDEO SYSTEM	1	150	1.00	150.00
FLASHER	-	-	0.50	-

RESTORATION OF WORK AREA. RESTORATION OF THE TRAFFIC SIGNAL WORK AREA SHALL BE INCIDENTAL TO THE RELATED PAY ITEM SUCH AS FOUNDATION, CONDUIT, HANDHOLE, TRENCH AND BACKFILL, ETC., AND NO EXTRA COMPENSATION SHALL BE ALLOWED. ALL ROADWAY SURFACES SUCH AS SHOULDERS, MEDIANS, SIDEWALKS, PAVEMENT, ETC. SHALL BE REPLACED IN KIND. ALL DAMAGE TO MOWED LAWNS SHALL BE REPLACED WITH AN APPROVED SOD, AND ALL DAMAGE TO UNMOWED FIELDS SHALL BE SEEDING IN ACCORDANCE WITH STANDARD SPECIFICATIONS 252 AND 250 RESPECTIVELY.

ENERGY COSTS TO: TOTAL = 550.80

KANE COUNTY DIVISION OF TRANSPORTATION
 41W011 BURLINGTON ROAD
 ST. CHARLES, IL 60175

ENERGY SUPPLY: CONTACT: MIKE WIDHALM
 PHONE: (847) 608-2376
 COMPANY: COMED

FOUNDATION (DEPTH)	FT. (m)	CABLE SLACK	FT. (m)	VERTICAL	FT. (m)
TYPE A - POST	4 (1.2)	HANDHOLE	6.5 (2.0)	ALL FOUNDATIONS	3.5 (1.0)
D - CONTROLLER	4 (1.2)	DOUBLE HANDHOLE	13 (4.0)	MAST ARM (L) POLE	20'-H-2=
E - M. ARM POLE	-	SIGNAL POST	2 (1.0)	(6m-H-0.6m)=	-
24" (600mm)	10 (3.0)	CONTROLLER CAB.	1 (0.5)	BRACKET MOUNTED	13 (4.0)
30" (750mm)	15 (4.6)	FIBER OPTIC	13 (4.0)	PED. PUSHBUTTON	4 (1.2)
36" (900mm)	15 (4.6)	ELECTRIC SERVICE	1 (0.5)	ELECTRIC SERVICE	13.5 (4.1)
		GROUND CABLE	1 (0.5)	SERVICE TO GROUND	13.5 (4.1)
				POST MOUNTED	6 (1.8)

SCHEDULE OF QUANTITIES

ITEM	UNIT	TOTAL
MAINTENANCE OF EXISTING TRAFFIC SIGNAL INSTALLATION	EACH	1
FULL-ACTUATED CONTROLLER AND TYPE IV CABINET, SPECIAL	EACH	1
INDUCTIVE LOOP DETECTOR	EACH	15
REMOVE EXISTING TRAFFIC SIGNAL EQUIPMENT	EACH	1
RELOCATE EXISTING UPS BATTERY BACK-UP SYSTEM	EACH	1
REMOTE-CONTROLLED VIDEO SYSTEM	EACH	1
ETHERNET KIT	EACH	1

- CONSTRUCTION NOTES:**
- REMOVE EXISTING CABINET AND CONTROLLER. INSTALL NEW CONTROLLER AND TYPE IV CABINET ON EXISTING FOUNDATION.
 - INSTALL ETHERNET KIT.
 - RELOCATE EXISTING UPS UNIT AND UPS CABINET. SIDE MOUNT TO PROPOSED TRAFFIC SIGNAL CABINET.
 - INSTALL PTZ CAMERA ON MAST ARM POLE IN SOUTHWEST CORNER ON EXTENSION POLE.