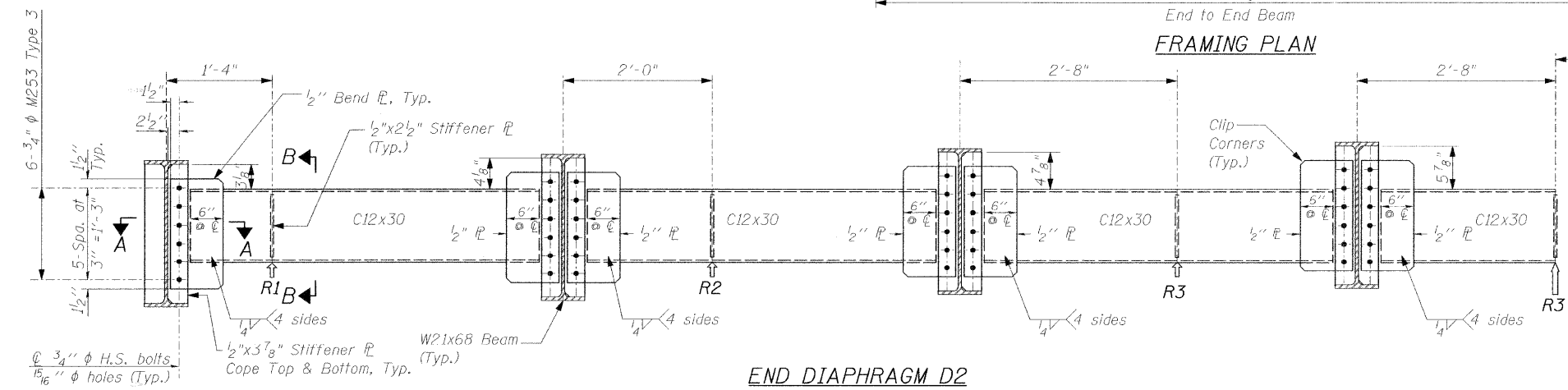


INTERIOR DIAPHRAGM D1
 Note: 14 Required
 Two hardened washers required for each set of oversized holes.

** 3/4" φ HS bolts, 15/16" φ holes

FRAMING PLAN



END DIAPHRAGM D2
 14 Required
 Note: Two hardened washers required for each set of oversized holes.

THEORETICAL JACKING LOADS (k) FOR FUTURE BEARING REPLACEMENT

Location	Total Dead Load
R1	44.3 k
R2	18.9 k
R3	15.5 k

Notes:
 Total dead load does not include an allowance for possible future wearing surface.
 Diaphragms assumed simply-supported between beams

△					
△					
△					
△					
△					
△					
REV. NO.	DATE	REVISION RECORD	MADE BY	CHECKED BY	SCALE: N.T.S.
					DATE: JANUARY 2008
					DRAWN BY: IMG
					CHECKED BY: NSA

WJE **Wiss, Janney, Elstner Associates, Inc.**
 Engineers, Architects, Material Scientists
 330 Pfingsten Road, Northbrook, IL 60062
 (847) 272-7400, Fax: (847) 291-4813
 WJE No. 2006.2324

THE CITY OF LAKE FOREST
 CHARTERED 1861

ILLINOIS DEPARTMENT OF TRANSPORTATION
 BUREAU OF LOCAL ROADS AND STREETS

PROJECT:
OLD ELM ROAD OVER EAST SKOKIE DITCH
 STA. 187+46 LAKE COUNTY
 STRUCTURE NO. 049-6870

TITLE:
FRAMING PLAN

DATE: 2/2/2008 FILENAME: P:\2006\2301-2400\2006.2324-NAnderson-Old Elm Design\MICROSTATION-FINAL\8-18.DGN