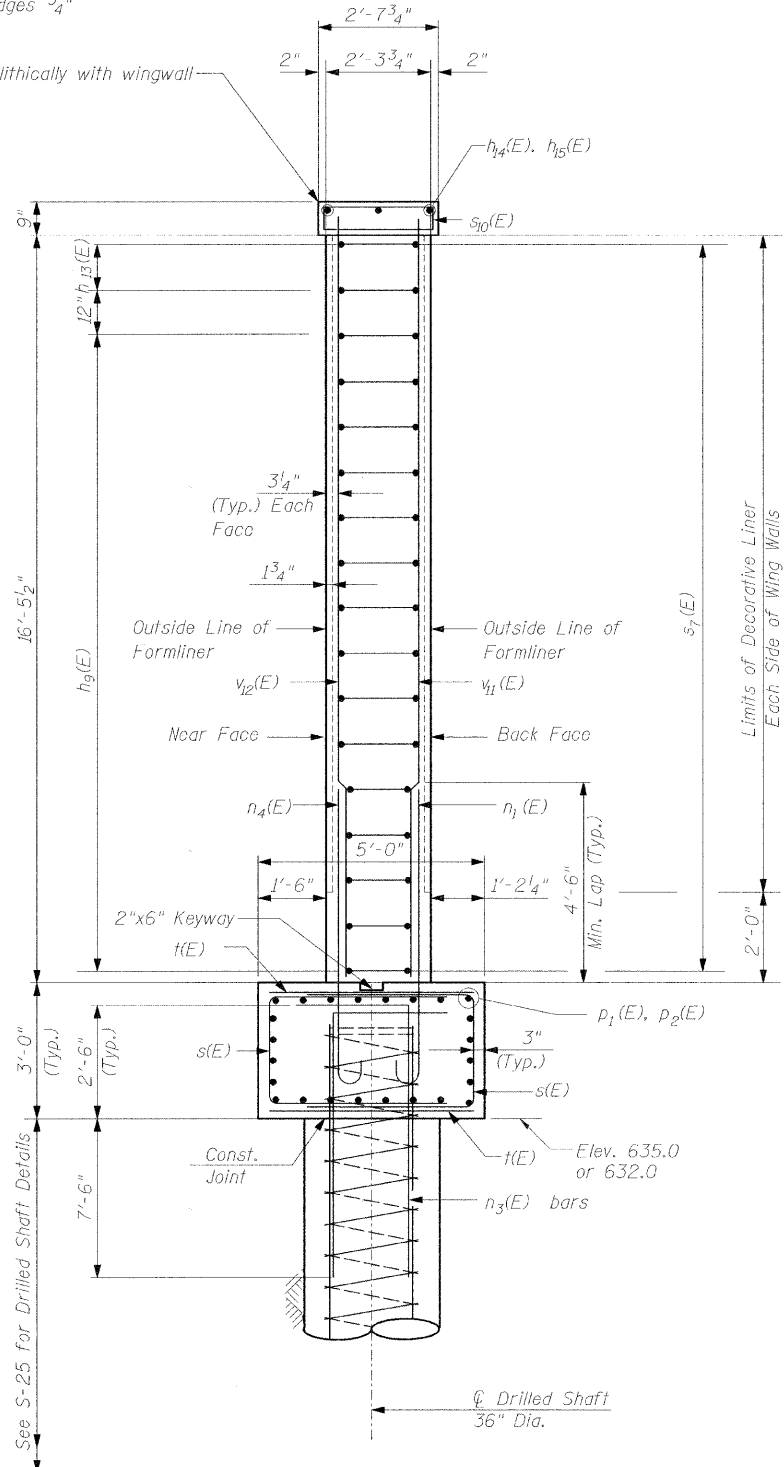


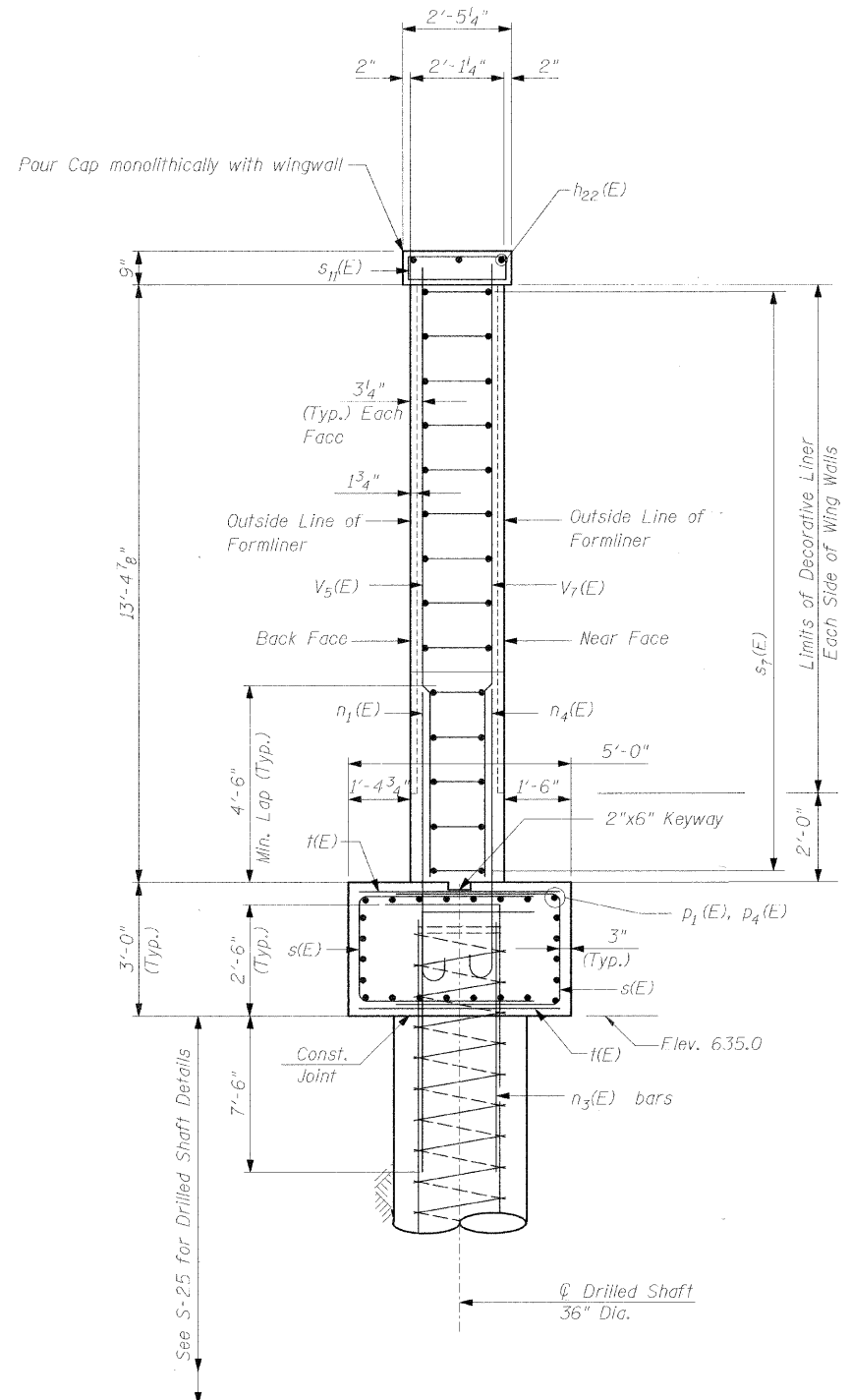
F.A.U. RTE.	SECTION	COUNTY	TOTAL SHEETS	SHEET NO.
1248	99-00080-00-BR	LAKE	46	32
STA.	TO STA.			
FED. ROAD DIST. NO.	ILLINOIS	FED. AID PROJECT		

Sheet S-20 of S-29 **63020**

Note:  
Chamfer all exposed edges  $\frac{3}{4}$ "



**SECTION B-B**  
Showing Reinforcement



**SECTION C-C**  
Showing Reinforcement

**EAST ABUTMENT**

Notes:  
See S-18 for Location of Section B-B and Section C-C.  
See S-26 for Detail of Material & Pipe Underdrain Details.  
Provide Shear Key in Top of Caisson Cap and Roughen Surface to  $\frac{1}{4}$ " Amplitude at Locations where Concrete will be Placed for the Abutment and Wingwall.

DATE: 9/7/2008  
FILENAME: p:\2006\2301-2400\2006.2324-manderson-old elm design\microstation-final\p-20.dgn

**WJE** Wiss, Janney, Elstner Associates, Inc.  
Engineers, Architects, Material Scientists  
330 Pingston Road, Northbrook, IL 60062  
(847) 272-7400, Fax: (847) 291-4813  
WJE No. 2006.2324

**THE CITY OF LAKE FOREST**  
CHARTERED 1861

ILLINOIS DEPARTMENT OF TRANSPORTATION  
BUREAU OF LOCAL ROADS AND STREETS

PROJECT:  
**OLD ELM ROAD OVER EAST SKOKIE DITCH**  
STA. 187+46 LAKE COUNTY  
STRUCTURE NO. 049-6870

TITLE:  
**EAST ABUTMENT & WINGWALL DETAILS**

△					
△					
△					
△					
△					
REV. NO.	DATE	REVISION RECORD	MADE BY	CHECKED BY	

SCALE: N.T.S. DRAWN BY: IMG  
DATE: JANUARY 2008 CHECKED BY: NSA