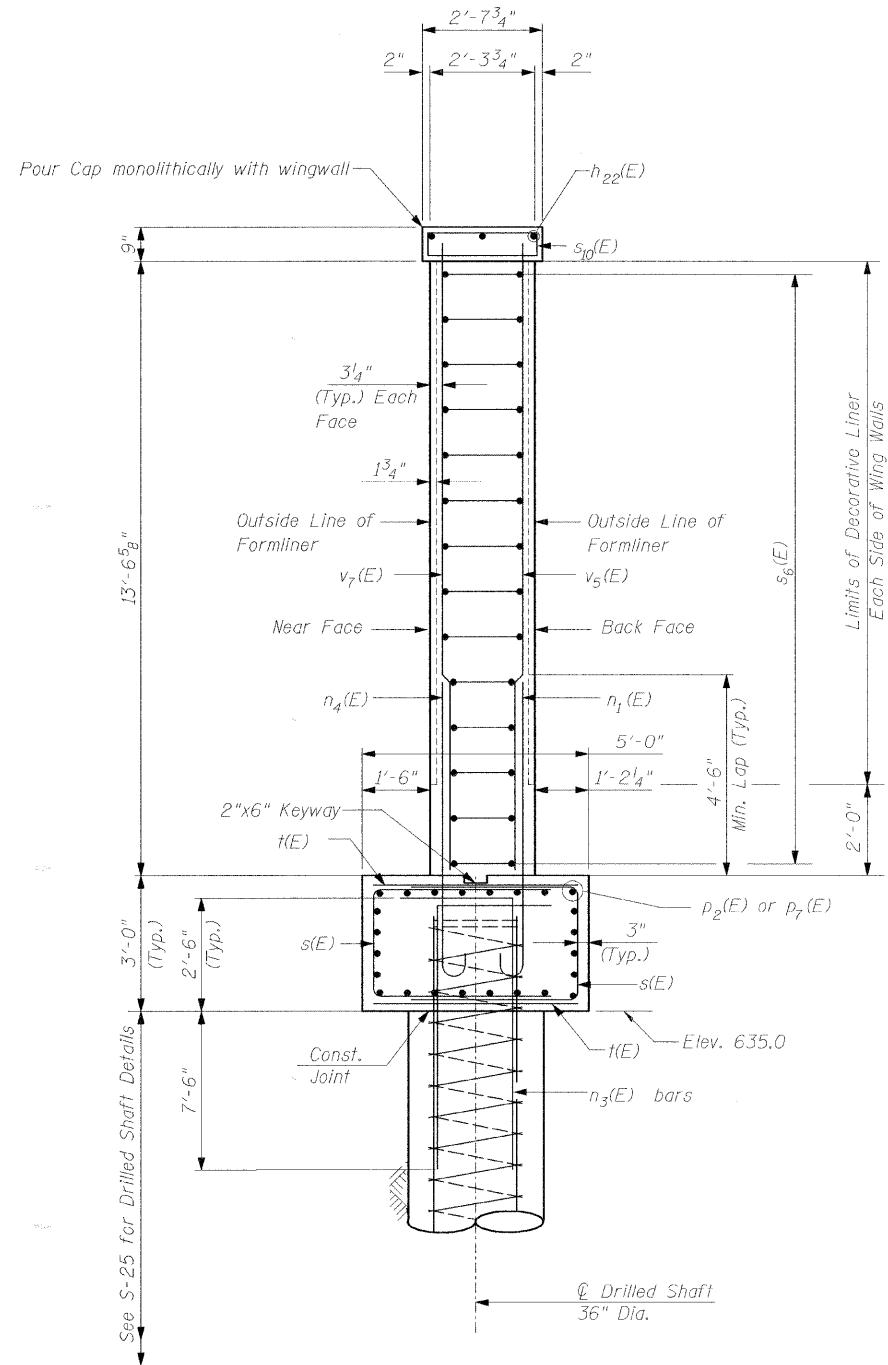


Note:  
Chamfer all exposed edges  $\frac{3}{4}$ "

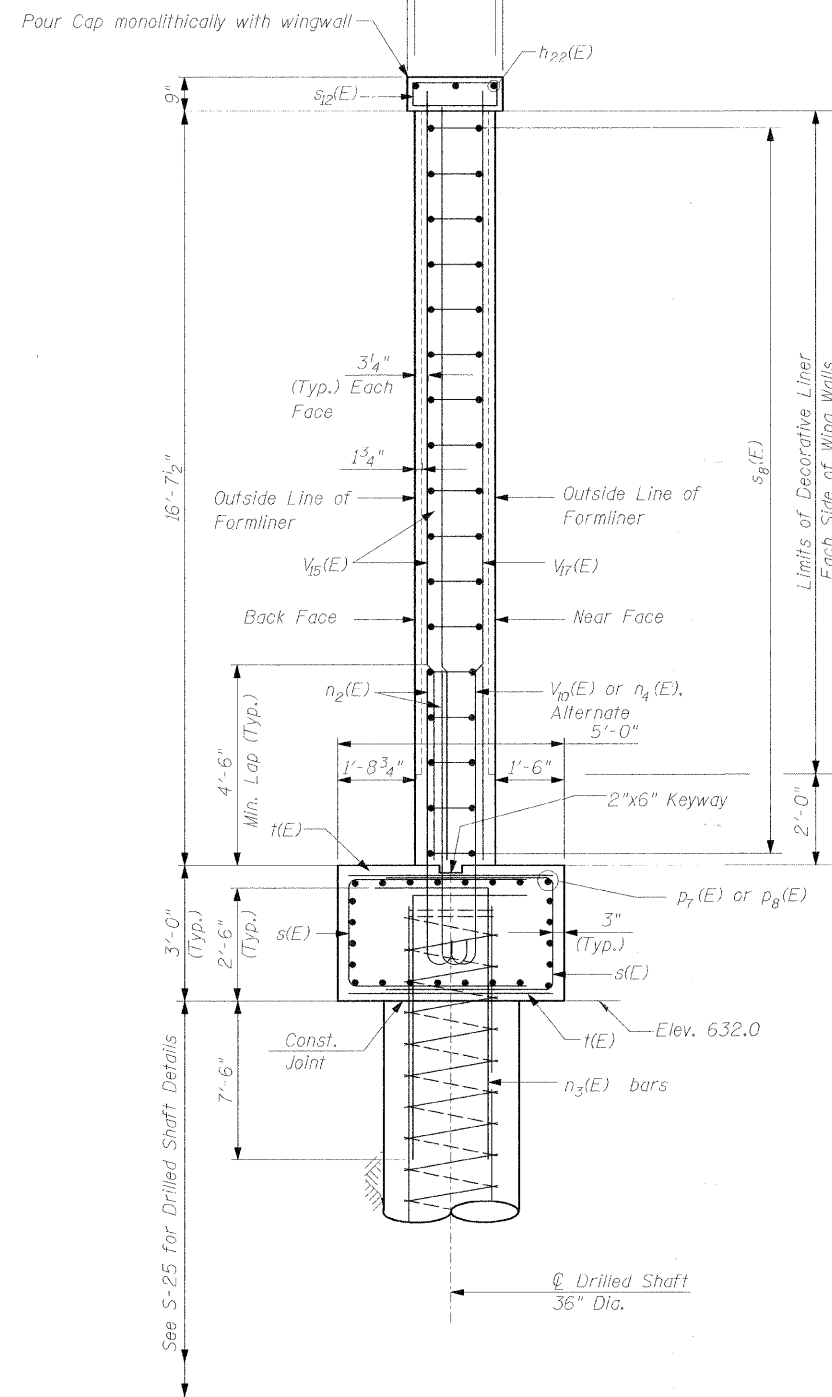
F.A.U. RTE.	SECTION	COUNTY	TOTAL SHEETS	SHEET NO.
1248	99-00080-00-BR	LAKE	46	36
STA.	TO STA.			
FED. ROAD DIST. NO.	ILLINOIS	FED. AID PROJECT		

Sheet S-24 of S-29

63020



SECTION E-E  
Showing Reinforcement



SECTION F-F  
Showing Reinforcement

WEST ABUTMENT

Notes:  
See S-22 for Location of Section E-E and Section F-F.  
See S-26 for Bill of Material and Pipe Underdrain Details.  
Provide Shear Key in Top of Caisson Cap and Roughen Surface to  $\frac{1}{4}$ " Amplitude at Locations where Concrete will be Placed for the Abutment and Wingwall.

DATE: 2/8/2008  
FILENAME: P:\2006\2301-2400\2006.2324-NAnderson-Old Elm Design\MICROSTATION-FINAL\S-24.dgn

△							
△							
△							
△							
△							
REV. NO.	DATE	REVISION RECORD	MADE BY	CHECKED BY	SCALE: N.T.S.	DRAWN BY: IMG	
					DATE: JANUARY 2008	CHECKED BY: NSA	

**WJE** Wiss, Janney, Elstner Associates, Inc.  
Engineers, Architects, Material Scientists  
330 Pfingsten Road, Northbrook, IL 60062  
(847) 272-7400, Fax: (847) 291-4813  
WJE No. 2008.2324

**THE CITY OF LAKE FOREST**  
CHARTERED 1861

ILLINOIS DEPARTMENT OF TRANSPORTATION  
BUREAU OF LOCAL ROADS AND STREETS

PROJECT:  
OLD ELM ROAD OVER EAST SKOKIE DITCH  
STA. 187+46 LAKE COUNTY  
STRUCTURE NO. 049-6870

TITLE: WEST ABUTMENT & WINGWALL DETAILS