

F.A.P. RTE.	SECTION	COUNTY	TOTAL SHEETS	SHEET NO.
634	138T	HENRY	42	1
			+1	
			43	

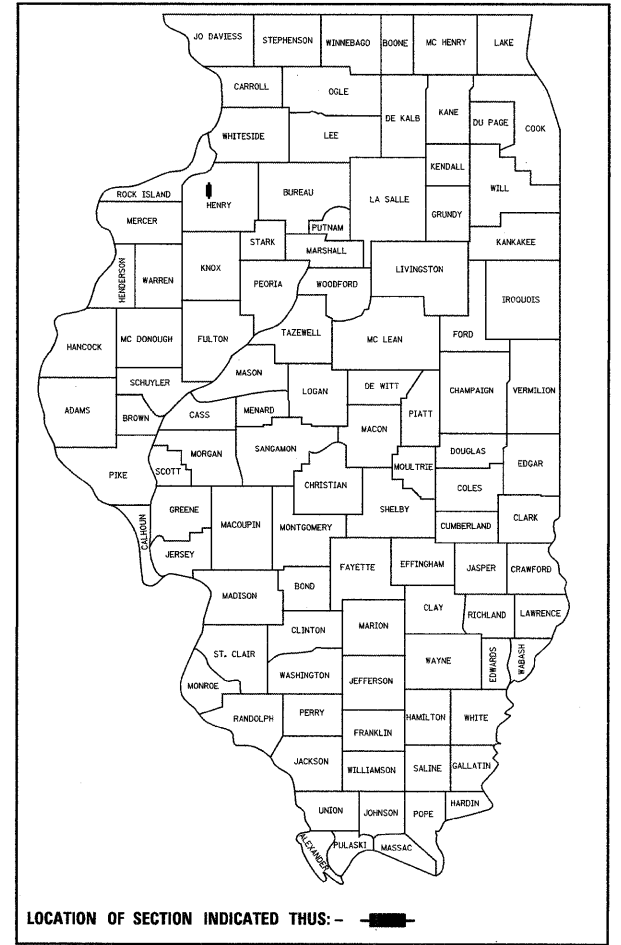
STATE OF ILLINOIS  
 DEPARTMENT OF TRANSPORTATION  
 DIVISION OF HIGHWAYS

**PROPOSED  
 HIGHWAY PLANS**

FAP ROUTE 634 (IL 82)  
 SECTION 138T

HENRY COUNTY  
 C-92-059-08

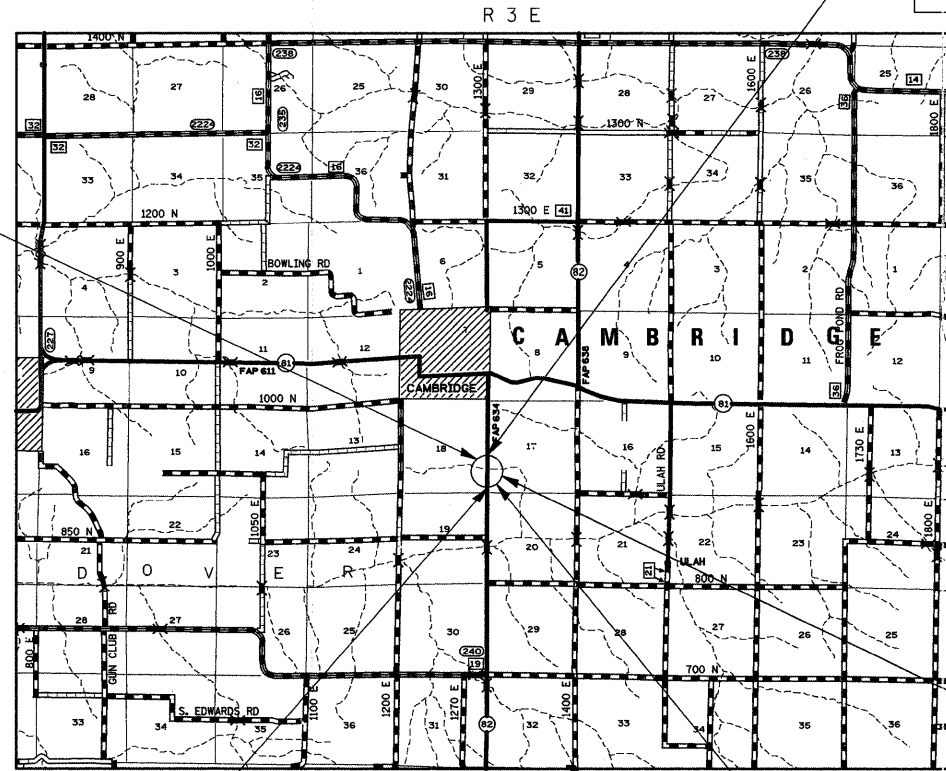
D-92-037-05



FOR INDEX OF SHEETS, SEE SHEET NO. 2  
 FOR LIST OF STANDARDS, SEE SHEET NO. 2

IMPROVEMENT ENDS  
 STA 437 + 00

SECTION ENDS  
 STA 433 + 47.40

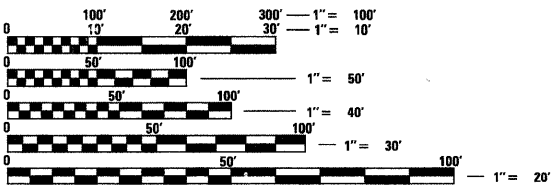


EXISTING 10' X 8' CULVERT SN# 037-1077  
 PROPOSED 10' X 8' CULVERT SN# 037-1182

SECTION BEGINS  
 STA 432 + 37.40

IMPROVEMENT BEGINS  
 STA 430 + 25

BOX CULVERT  
 STA 432 + 94.78



STATE OF ILLINOIS  
 DEPARTMENT OF TRANSPORTATION  
 DIVISION OF HIGHWAYS

SUBMITTED 01/23 20 08  
*George F. Ryan*  
 DEPUTY DIRECTOR OF HIGHWAYS, REGION ENGINEER  
 March 21, 20 08  
*Eric E. Harrel*  
 ENGINEER OF DESIGN AND ENVIRONMENT  
 March 21, 20 08  
*Christine M. Reed*  
 DIRECTOR OF HIGHWAYS, CHIEF ENGINEER

**PRINTED BY THE AUTHORITY  
 OF THE STATE OF ILLINOIS**

NET LENGTH OF PROJECT = 110 FEET = 0.02 MILES  
 GROSS LENGTH OF PROJECT = 110 FEET = 0.02 MILES

PROJECT ENGINEER REBECCA MARRUFFO

SQUAD LEADER: PAUL GRANT (815)-284-5904

CAMBRIDGE TOWNSHIP, SECTION 17,18  
 J.U.L.I.E.  
 JOINT UTILITY LOCATION INFORMATION FOR EXCAVATION  
 1-800-892-0123

CONTRACT NO. 64A77