

STATE OF ILLINOIS
DEPARTMENT OF TRANSPORTATION

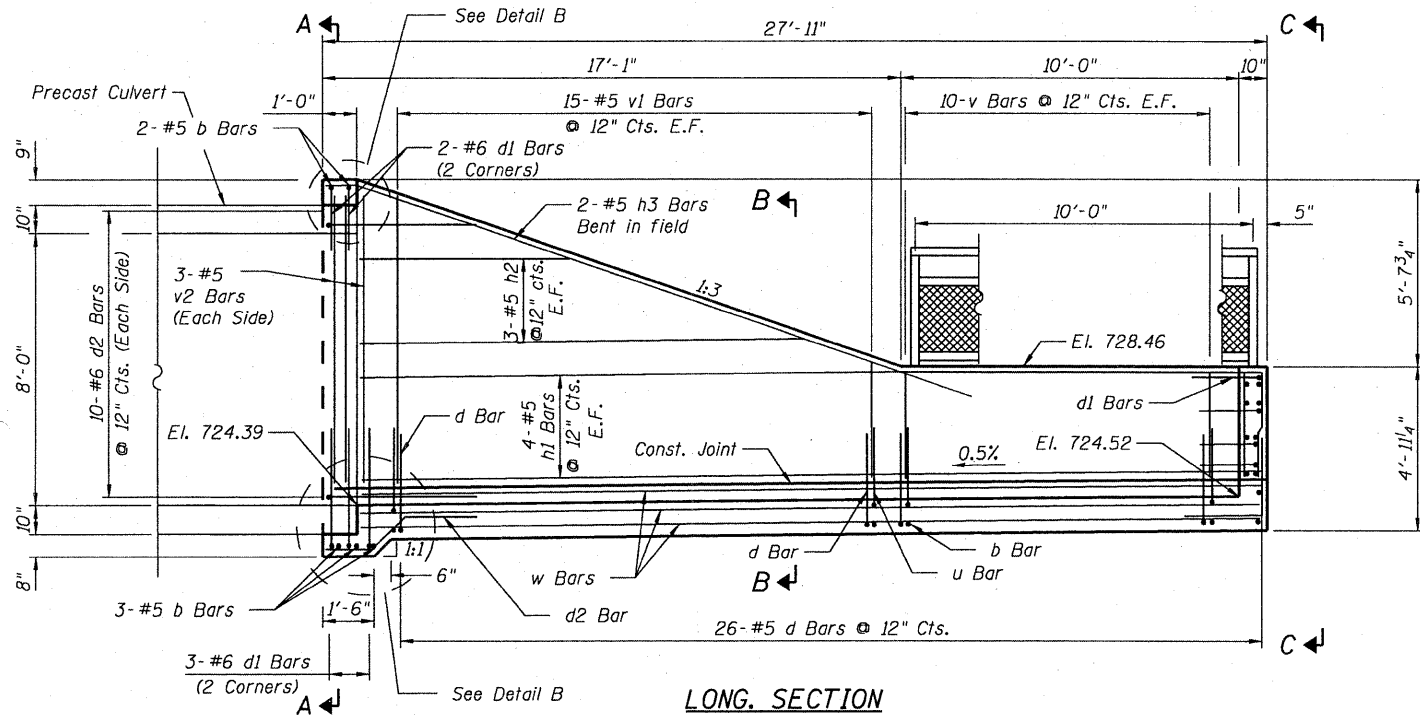
ROUTE NO.	SECTION	COUNTY	TOTAL SHEETS	SHEET NO.
FAP 634	I38T	HENRY	42	16
FED. ROAD DIST. NO. 7		ILLINOIS	FED. AID PROJECT	

SHEET NO. 1
2 SHEETS

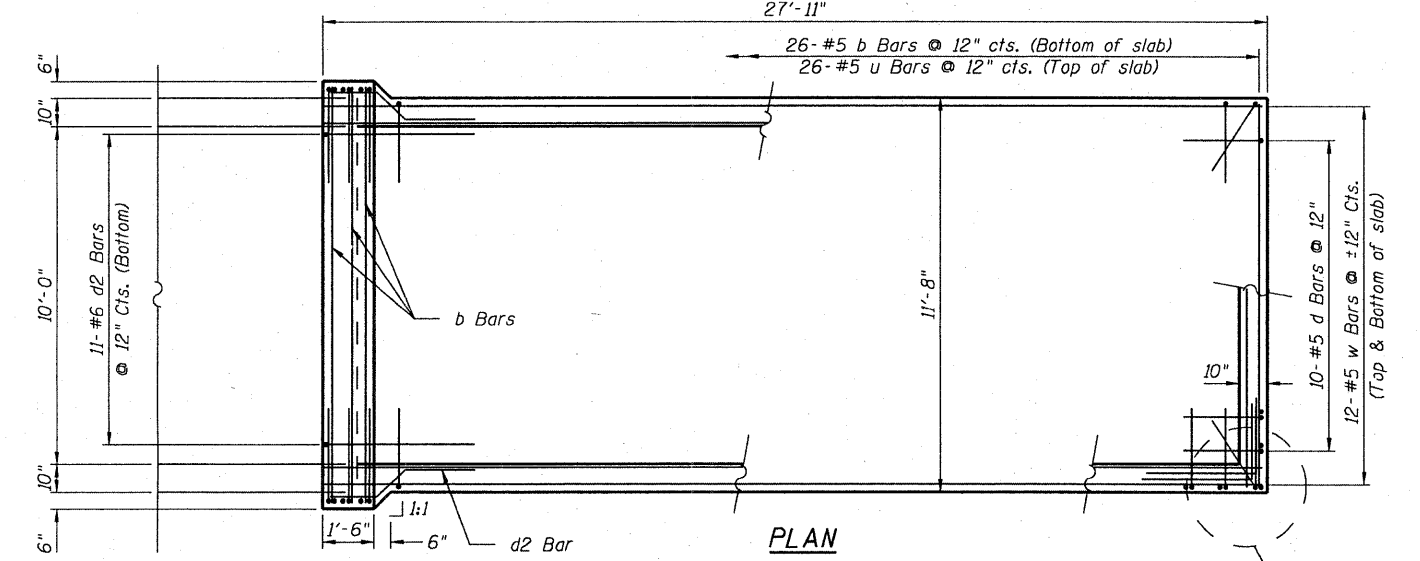
DESIGN STRESSES

$f_y = 60,000 \text{ psi}$
 $f'_c = 3,500 \text{ psi}$

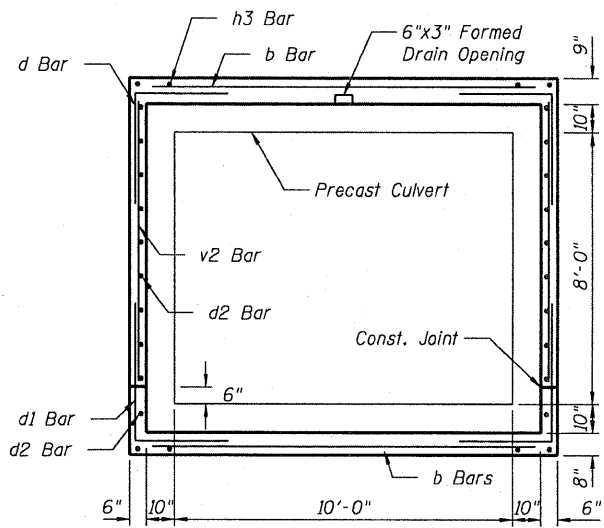
Contract #64A77
Coarse aggregate full length. Cost included with Culvert Drop Box.



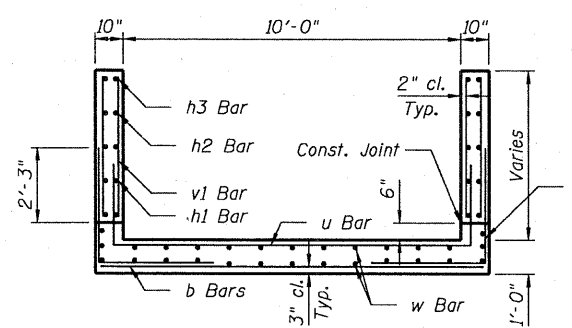
LONG. SECTION



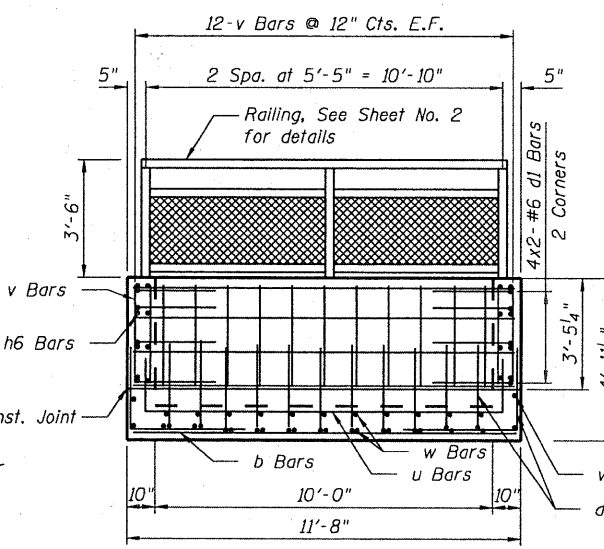
PLAN



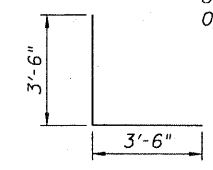
SECTION A-A



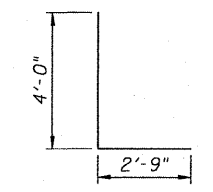
SECTION B-B



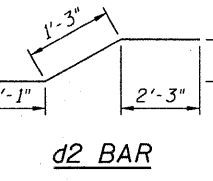
VIEW C-C



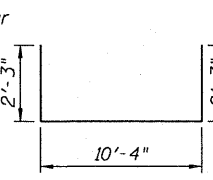
d BAR



d1 BAR



d2 BAR



u BAR

NOTES:

1. Reinforcement bars shall conform to the requirements of AASHTO M-31, M-42 or M-53, Grade 60.
2. See plan and profile sheet for more information. See cross section sheet for more information.
3. Exposed edges shall be beveled $\frac{3}{4}$ ".
4. All construction joints shall be bonded.
5. The cast-in-place drop box shall be attached to the precast portion. The reinforcement shall be extended out of the last precast section and incorporated into the cast-in-place section or rebar splicers shall be embedded in the precast section. See detail B.
6. The contract unit price for Culvert Drop Box shall include reinforcement, concrete, rebar splicers, earth excavation, and necessary grading as shown in the cross sections or to the slope.
7. Bars indicated thus 12 x 4-#5 etc. indicates 12 lines of bars with 4 lengths per line.
8. Clear cover is 2" typical, 3" at the bottom of bottom slab.
9. See Sheet No. 2 for railing details.

BILL OF MATERIAL

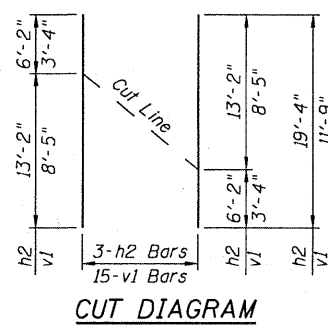
BAR	NO.	SIZE	LENGTH	SHAPE	
b	31	# 5	11' - 4"		
d	62	# 5	7' - 0"		
d1	26	# 6	6' - 9"		
d2	31	# 6	4' - 7"		
h1	16	# 5	26' - 7"		
h2	6	# 5	19' - 4"		
h3	4	# 5	20' - 0"		
v	64	# 5	3' - 1"		
v1	30	# 5	11' - 9"		
v2	6	# 5	8' - 5"		
u	26	# 5	14' - 10"		
w	24	# 5	26' - 7"		
* Reinforcement Bars, Epoxy Coated				Lb	3,640
* Structure Excavation				Cu. Yd.	104.0
* Concrete Structures				Cu. Yd.	23.2
Culvert Drop Box				Each	1
Steel Railing				Foot	28.3

* For Information Only

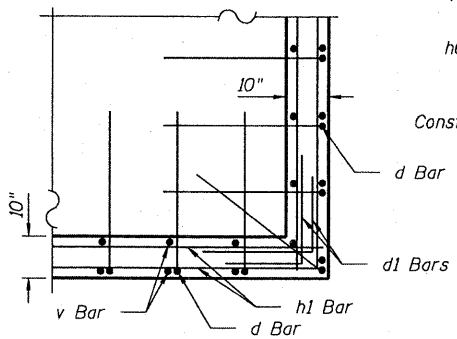
10FT x 10FT DROP BOX
F.A.P. 634 (ILLINOIS 82)
SECTION 138T
HENRY COUNTY
STATION 432+94.78
S.N. 037-1182



DATE: 1/18/2008
SEAL EXPIRES: 11/30/2009

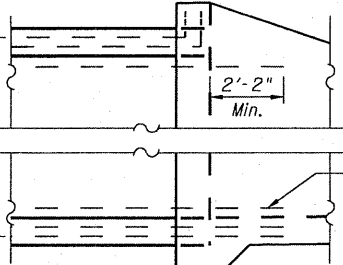


CUT DIAGRAM



DETAIL A

u bars and slab reinforcement not shown for clarity



DETAIL B

Cast-in-place reinforcement not shown for clarity



Ciorba Group, Inc.
CONSULTING ENGINEERS
5507 North Cumberland Avenue, Suite 402 Chicago, Illinois 60656
Tel. 773.775.4009 Fax 773.775.4014 Email chicago@ciorba.com

DESIGNED - EKM
CHECKED - SCD
DRAWN - AL
CHECKED - EKM

1/18/2008 rdenley N:\PROJECTS\3317\3317_05\Design\Structure\1\CAD\03317.rpt\box1.dgn