

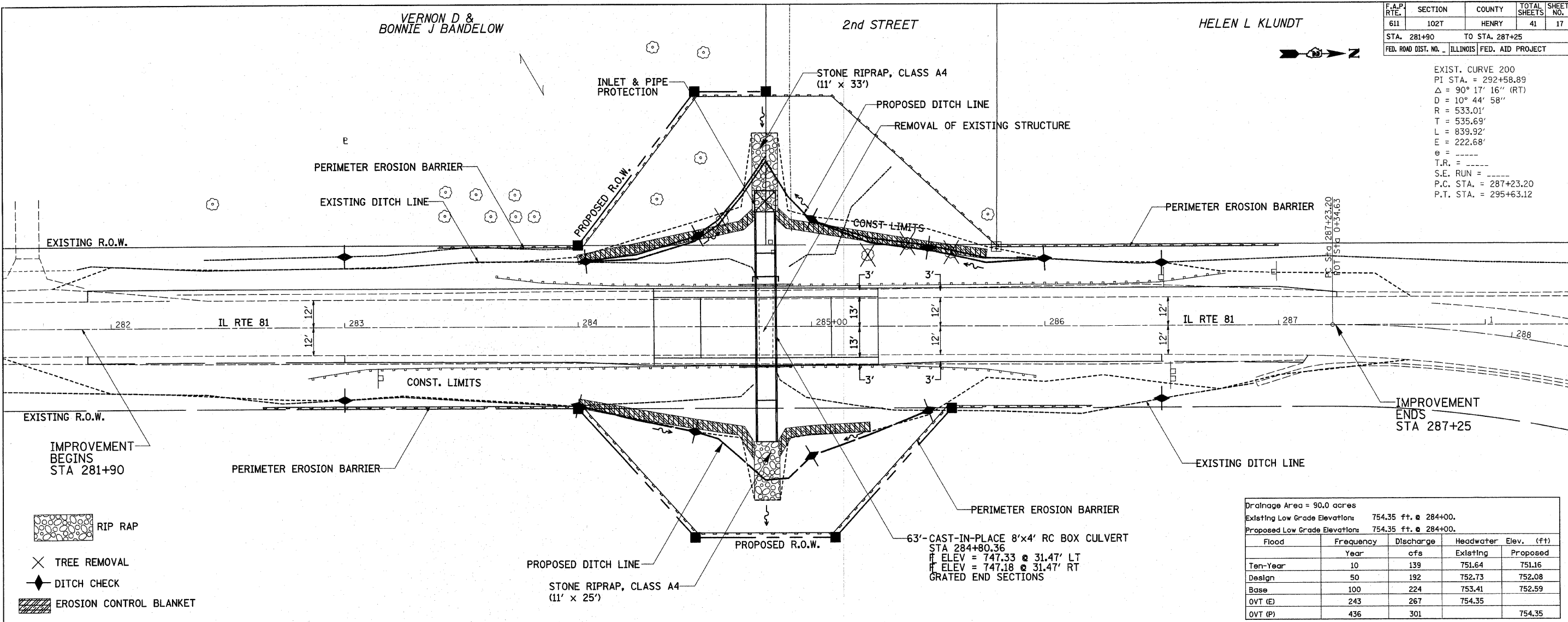
F.A.P. RTE.	SECTION	COUNTY	TOTAL SHEETS	SHEET NO.
611	102T	HENRY	41	17
STA. 281+90		TO STA. 287+25		
FED. ROAD DIST. NO.		ILLINOIS		FED. AID PROJECT

EXIST. CURVE 200
 PI STA. = 292+58.89
 $\Delta = 90^\circ 17' 16''$ (RT)
 $D = 10^\circ 44' 58''$
 $R = 533.01'$
 $T = 535.69'$
 $L = 839.92'$
 $E = 222.68'$
 $e = \text{---}$
 $T.R. = \text{---}$
 $S.E. RUN = \text{---}$
 $P.C. STA. = 287+23.20$
 $P.T. STA. = 295+63.12$

DATE	BY	REVISION

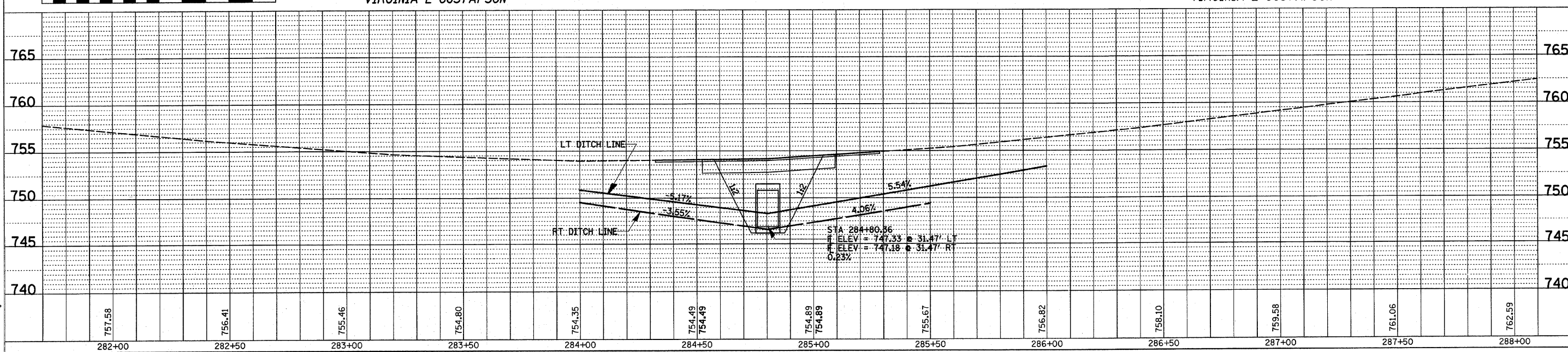
DATE	BY	REVISION

PLT DATE = 11/15/08
 FILE NAME = C:\p08\111768\111768.dwg
 PLOT SCALE = 1"=40'
 USER NAME = jordanhd



Drainage Area = 90.0 acres
 Existing Low Grade Elevation: 754.35 ft. @ 284+00.
 Proposed Low Grade Elevation: 754.35 ft. @ 284+00.

Flood	Frequency	Discharge	Headwater Elev. (ft)	
			Existing	Proposed
Ten-Year	10	139	751.64	751.16
Design	50	192	752.73	752.08
Base	100	224	753.41	752.59
OVT (E)	243	267	754.35	754.35
OVT (P)	436	301	754.35	754.35



DRAINAGE & EROSION CONTROL