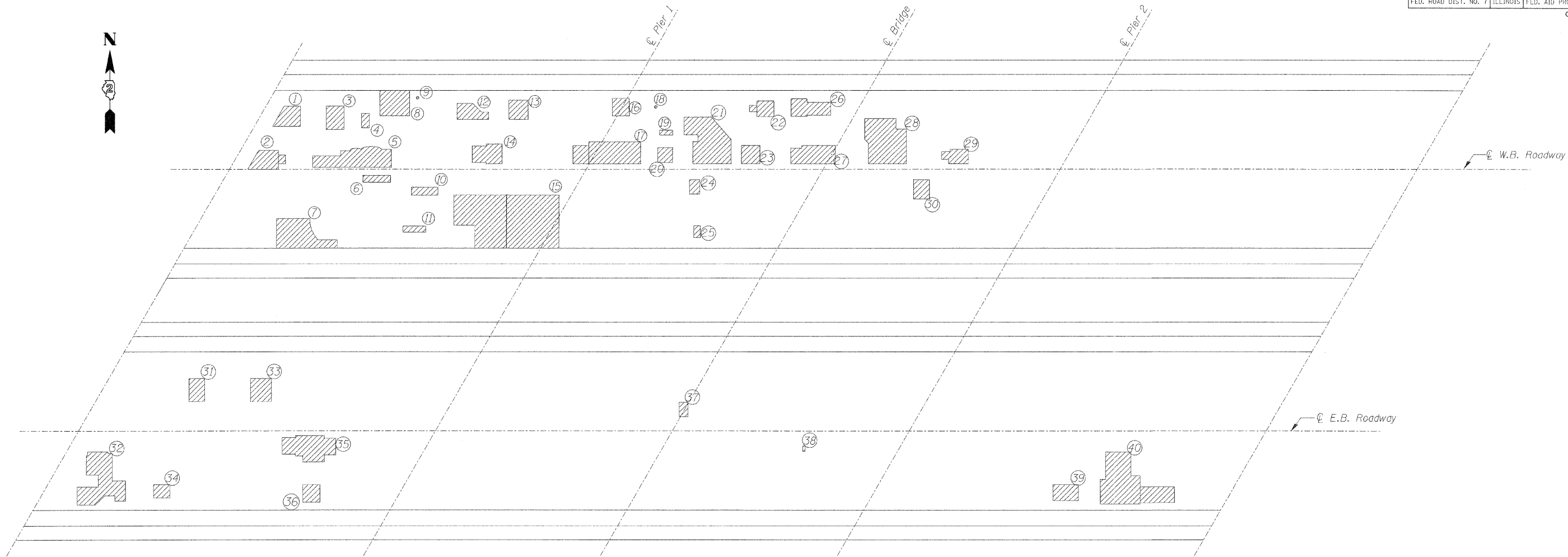


STATE OF ILLINOIS
DEPARTMENT OF TRANSPORTATION

ROUTE NO.	SECTION	COUNTY	TOTAL SHEETS	SHEET NO.	SHEET NO. 3 4 SHEETS
U.S. 20	6BM	WINNEBAGO COUNTY	13	5	
FED. ROAD DIST. NO. 7		ILLINOIS	FED. AID PROJECT-		CONTRACT # 64D74



DECK EXISTING REPAIRS SURVEY
(June 26 thru 27, 2007)

LEGEND

Existing Repairs

EXISTING REPAIRS
(For information only)

S.No	AREA (SF)	S.No	AREA (SF)
1.	16.0	21	4.0
2.	19.5	22	11.5
3.	14.8	23	12.25
4.	4.0	24	5.5
5.	46.0	25	3.0
6.	7.0	26	21.25
7.	45.5	27	28.7
8.	27.0	28	62.0
9.	0.2	29	12.2
10.	8.0	30	11.0
11.	5.0	31	13.25
12.	15.0	32	55.0
13.	13.5	33	17.66
14.	20.0	34	7.7
15.	184.0	35	41.0
16.	11.0	36	11.0
17.	52.5	37	4.5
18.	0.2	38	0.5
19.	2.3	39	14.5
20.	8.0	40	81.0

DESIGNED	M.R./M.A.
CHECKED	M.S./H.T.
DRAWN	R.K./M.A.
CHECKED	M.S./H.T./M.R.

DECK EXISTING REPAIRS SURVEY
US 20 OVER KISHWAUKEE RIVER
FAP ROUTE 525 (US20), SECTION (6BM)
WINNEBAGO COUNTY
STATION 84+88.30
STRUCTURE NO. 101-0073 & 101-0074