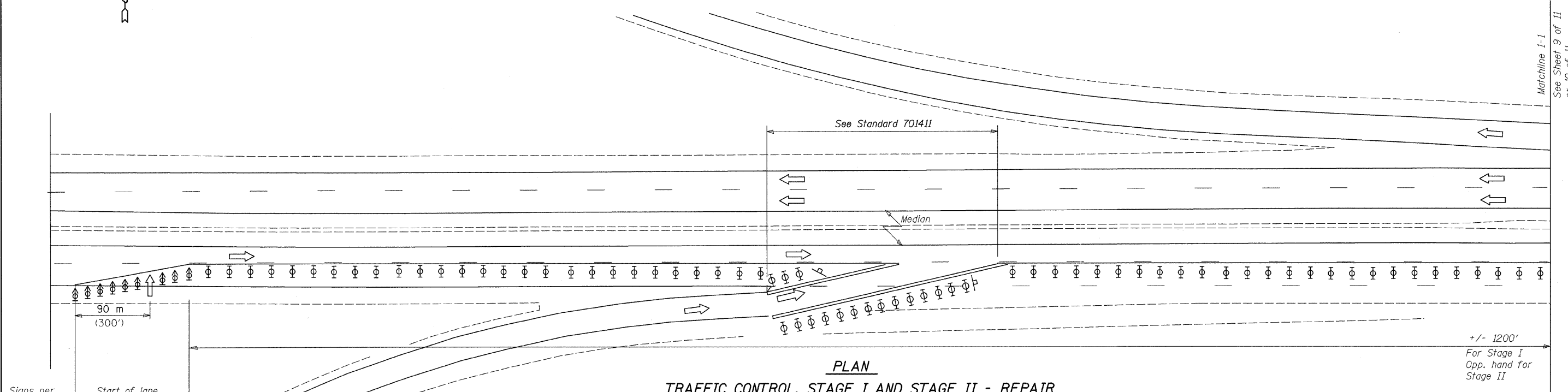


STATE OF ILLINOIS  
DEPARTMENT OF TRANSPORTATION

ROUTE NO.	SECTION	COUNTY	TOTAL SHEETS	SHEET NO.
U.S. 20	6BIM	WINNEBAGO COUNTY	13	9
FED. ROAD DIST. NO. 7		ILLINOIS	FED. AID PROJECT-	

CONTRACT # 64074



PLAN  
TRAFFIC CONTROL, STAGE I AND STAGE II - REPAIR

**STAGE I CONSTRUCTION SEQUENCE**

1. Install Standard 701423-02.
2. Remove & replace existing wearing surface of Stage I area.
3. Relocate Standard 701423-02 to Stage II.
4. Place temporary pavement marking.
5. Switch traffic to Stage II.

**STAGE II CONSTRUCTION SEQUENCE**

1. Remove & replace existing wearing surface of Stage II area.
2. Remove Standard 701423-02.
3. Place temporary pavement marking.

- ① Undivided roadway only with left lane closure in opposite direction.
- ② Sign in median may be omitted when median is less than 3 m (10').
- ③ Temporary pavement marking tape shall be placed throughout the taper and along-side the work area. The right edge line shall be white and the left edge line shall be yellow.
- ④ Barrier wall/guardrail markers at 7.6 m (25'). Markers on right shall be crystal and markers on left shall be amber. See Standards 704001 and 635001.

NORMAL POSTED SPEED FORMULAS

	Metric	English
45 mph or more	$L = 0.65WS$	$L = WS$

W = Width of offset in meters (feet).  
S = Normal posted speed in mph.

**TEMPORARY CONCRETE BARRIER**

Stage I  
SN 101-0073 Total 350 Ft  
SN 101-0074 Total 350 Ft

**RELOCATE TEMPORARY CONCRETE BARRIER**

Temporary Storage and Stage II  
SN 101-0073 Total 700 Ft  
SN 101-0074 Total 700 Ft

**IMPACT ATTENUATOR (TEMPORARY)**

Stage I  
SN 101-0073 Total 1 Each  
SN 101-0074 Total 1 Each

**IMPACT ATTENUATOR (RELOCATE)**

Temporary Storage and Stage II  
SN 101-0073 Total 2 Each  
SN 101-0074 Total 2 Each

**PAVEMENT MARKING REMOVAL**

Stage I  
SN 101-0073 Total 205 Ft (Median edge line, taper)  
SN 101-0074 Total 550 Ft (Median edge line, taper)

Stage II  
SN 101-0073 Total 130 Ft (Outer edge line, taper & bridge)  
SN 101-0074 Total 600 Ft (Outer edge line, taper & bridge)

**PAVEMENT MARKING TAPE, TYPE III 4"**

Direction of Traffic	Stage I	Stage II	Location
Westbound	1705	610	North edgeline
Westbound	610	1705	South edgeline
Eastbound	1800	2285	North edgeline
Eastbound	2285	610	South edgeline
Subtotal	5210	5210	
Total	11610	9420	

**PAINT PAVEMENT MARKING LINE 4"**

SN 101-0073 Total 2500 Ft (Edge lines & centerline)  
SN 101-0074 Total 2500 Ft (Edge lines & centerline)

**SYMBOLS**

- Arrow board
- Work area
- Sign
- Direction indicator barricade with steady burn monodirectional light
- Temporary concrete barrier
- Type II barricade, drum, or vertical barricade with steady burn monodirectional light
- Monodirectional barrier wall/guardrail marker
- Impact attenuator

Use Standard 701423-02 as modified in traffic control plan

DESIGNED	M.R./M.A.
CHECKED	M.S./H.T.
DRAWN	R.K./M.A.
CHECKED	M.S./H.T./M.R.

TRAFFIC CONTROL PLAN 3 OF 6  
US 20 OVER KISHWAUKEE RIVER  
FAP ROUTE 525 (US20), SECTION (6BIM)  
WINNEBAGO COUNTY  
STATION 84+88.30  
STRUCTURE NO. 101-0073 & 101-0074

SCALE: NONE DATE: JANUARY, 2008  
Soodan Soodan & Associates, Inc.  
100 North LaSalle Street, Suite 1800  
Chicago, Illinois 60602