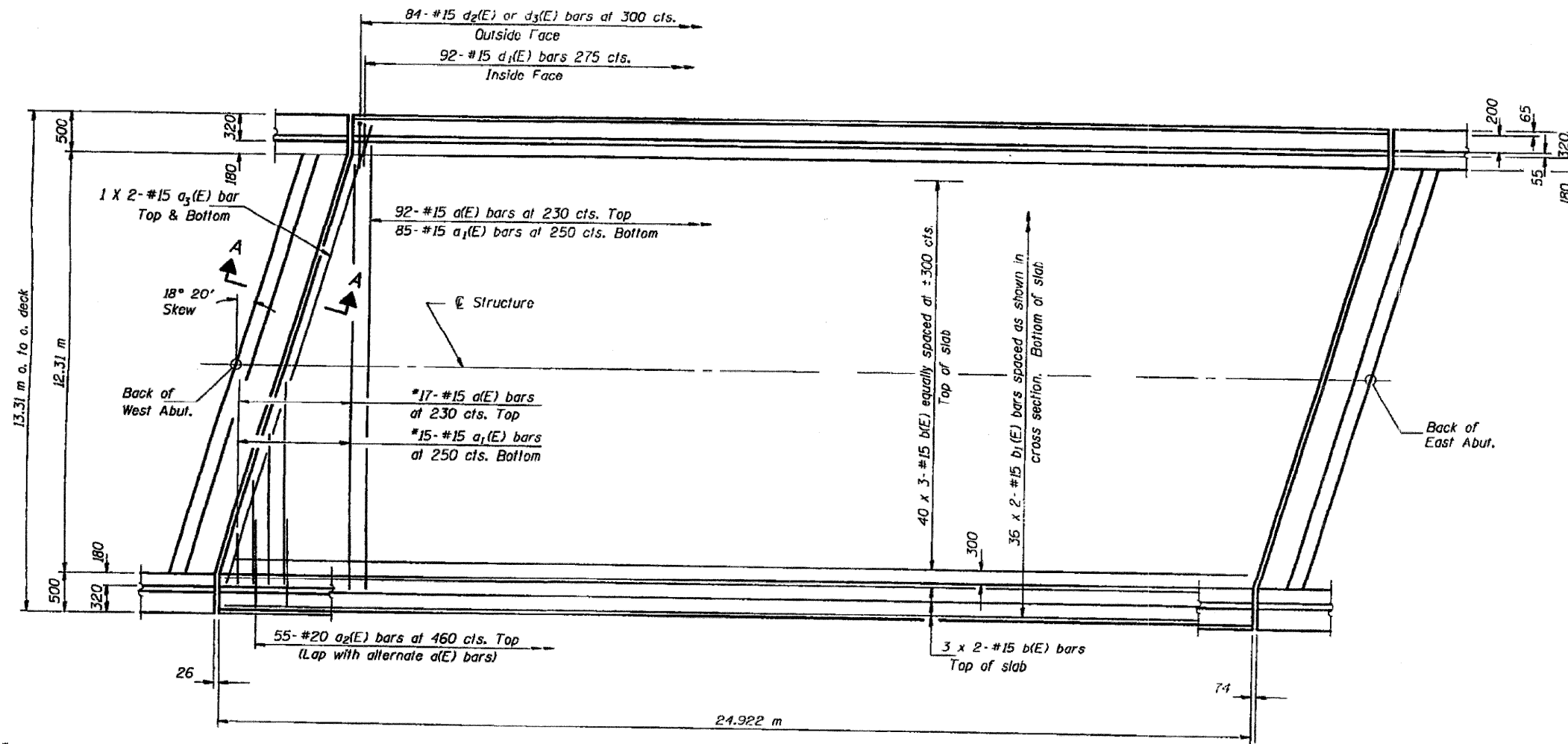


FOR INFORMATION ONLY



Min. Bar Laps
#15 = 510

* Order a(E) & a1(E) bars full length.
Cut to fill skew and use remainder
of bars in opposite end.

PLAN EB STRUCTURE
(WB Structure Similar)

Notes: See Sheet #7 of 17 for superstructure details
and Bill of Material.
Reinforcement bars designated (E) shall be
epoxy coated.
Bars indicated thus 20 x 3-#15 etc. indicates
20 lines of bars with 3 lengths per line.
See Sheet #7 of 17 for parapet reinforcement.
All dimensions are in millimeters (mm) except
as noted.



DESIGNED	D. FENDER
CHECKED	M. WALTERS
DRAWN	D. FENDER
CHECKED	M. WALTERS

FILE NAME =	USER NAME = jsmkdj	DESIGNED -	REVISED -
P:\NPAINING\64D91\paint2008-3.dgn		DRAWN -	REVISED -
		CHECKED -	REVISED -
		DATE -	REVISED -

STATE OF ILLINOIS
DEPARTMENT OF TRANSPORTATION

• D2 Bridge Painting 2008-3
LOCATION 1 STRUCTURES 101-0049 & 101-0050

EXISTING BRIDGE PLANS				F.A.P. RTE.	SECTION	COUNTY	TOTAL SHEETS	SHEET NO.
SCALE:	SHEET NO.	OF	SHEETS	STA.	TO STA.	WINNEBAGO	19	5
						CONTRACT NO. 64D91		
						ILLINOIS FED. AID PROJECT		

SUPERSTRUCTURE PLAN
US 20 OVER C.C. & P. RAILROAD
F.A. ROUTE 301 - SEC. 1-VBR
WINNEBAGO COUNTY
STATION 21+549.213
STRUCTURE NO. 101-0049 & 101-0050