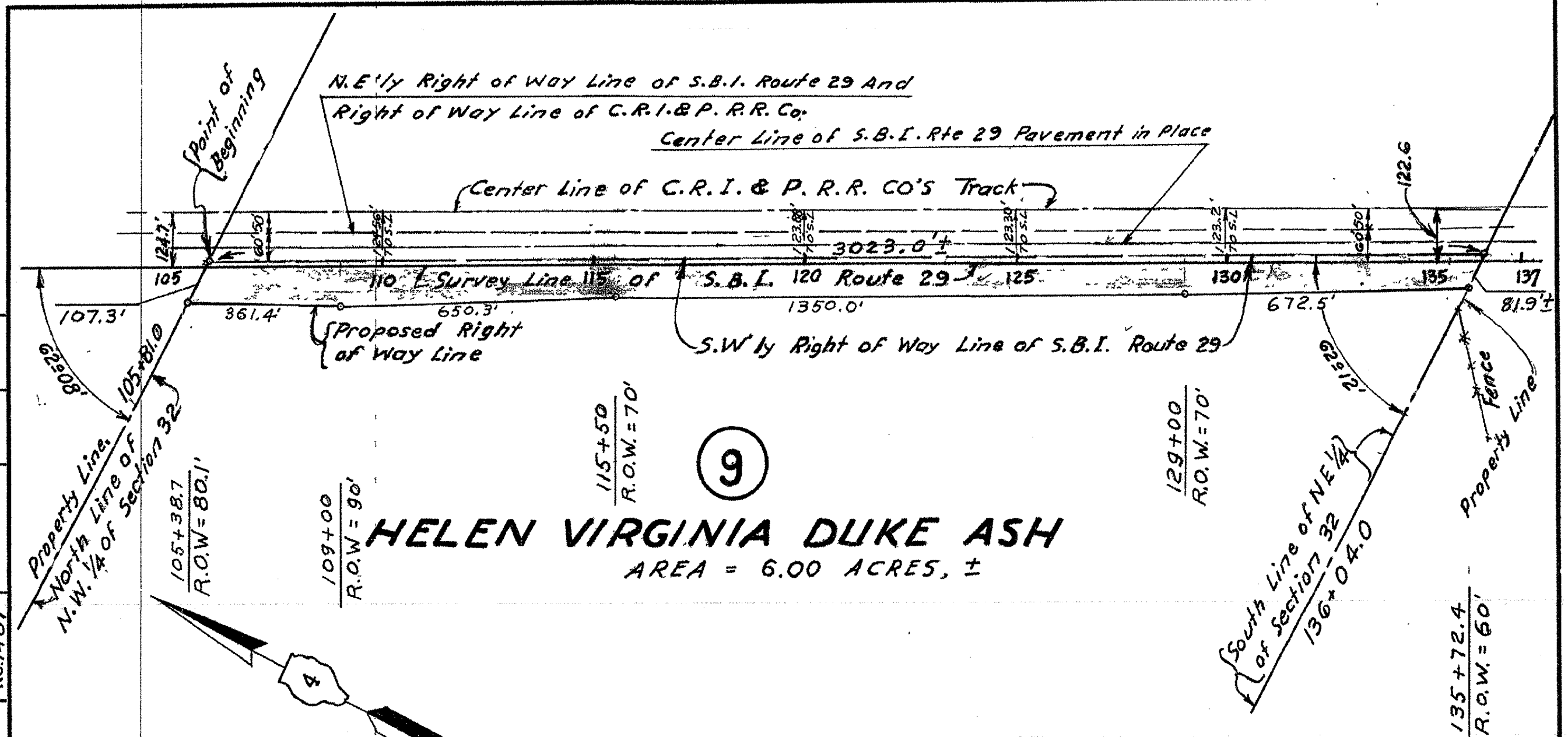


STATE OF ILLINOIS  
DEPARTMENT OF PUBLIC WORKS & BUILDINGS  
DIVISION OF HIGHWAYS



R. O. W. PLAT	COMPUTED	BY	DATE
	CHECKED	AMUR.	1-6-59
	INKED	V.L.T.	1-6-59
	INK CHECKED	A-I.	1-2-57
NOTE BOOK	No. 1487		

**HELEN VIRGINIA DUKE ASH**

AREA = 6.00 ACRES, ±

PART OF N.E. 1/4 OF NW 1/4 OF SECTION 32 AND PART OF WEST HALF OF N.E. 1/4 OF SECTION 32, TOWNSHIP 14 NORTH, RANGE 10E, 4th PRINCIPAL MERIDIAN  
**PUTNAM COUNTY**

**RIGHT OF WAY PLAT**

S. B. I. ROUTE 29 (F.A. ROUTE 30) CONSTRUCTION SECTION 20

SCALE: 1" = 300' JANUARY 1957

Signed 1-13-59 Recorded 4-3-59 Book 103 Page 248

9

PLOT DATE: 1-13-59  
FILE NAME: # 68713  
PLOT SCALE: 1" = 300'  
REFERENCE: 103