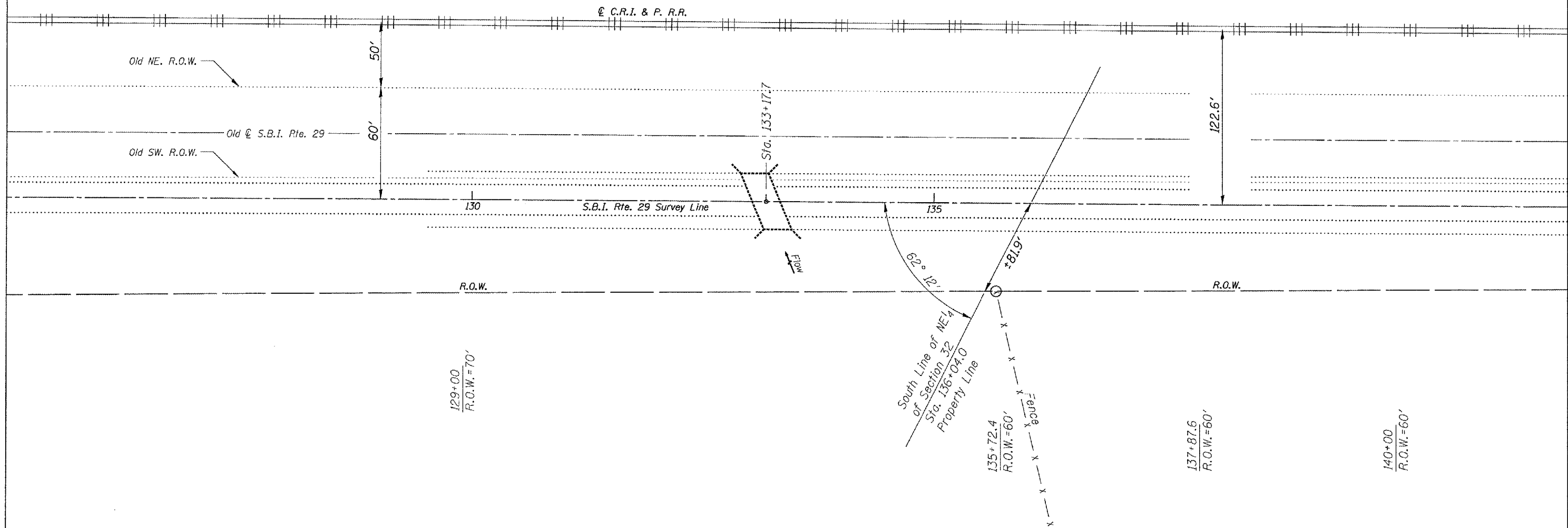


F.A.P. RTE.	SECTION	COUNTY	TOTAL SHEETS	SHEET NO.
318	(21B-11,20BR1-1)	PUTNAM	25	13
STA. #		TO STA. #		
FED. ROAD DIST. NO. 4		ILLINOIS FED. AID PROJECT		
• 078-0005 @ Sta. 133+17.70				

B.M. - USGS □ Parapet of Bridge
 33'Lt. Sta. 133+00 - Elev. 502.38
 Existing Structure - R.C. Thru Girder
 Span 25' cl. Rdwy. 20.6 FF
 Abutment - Closed R.C.



PLOT DATE = #DATE#
 FILE NAME = #FILE#
 PLOT SCALE = #SCALE#
 REFERENCE = #REF#

SN.078-0005, IL.29
 over Dry Hollow Crk.

REVISIONS	
NAME	DATE

ILLINOIS DEPARTMENT OF TRANSPORTATION
GENERAL LAYOUT

SCALE: 1"=75'
 DATE: 12-28-2007
 DRAWN BY: CEJ
 CHECKED BY: