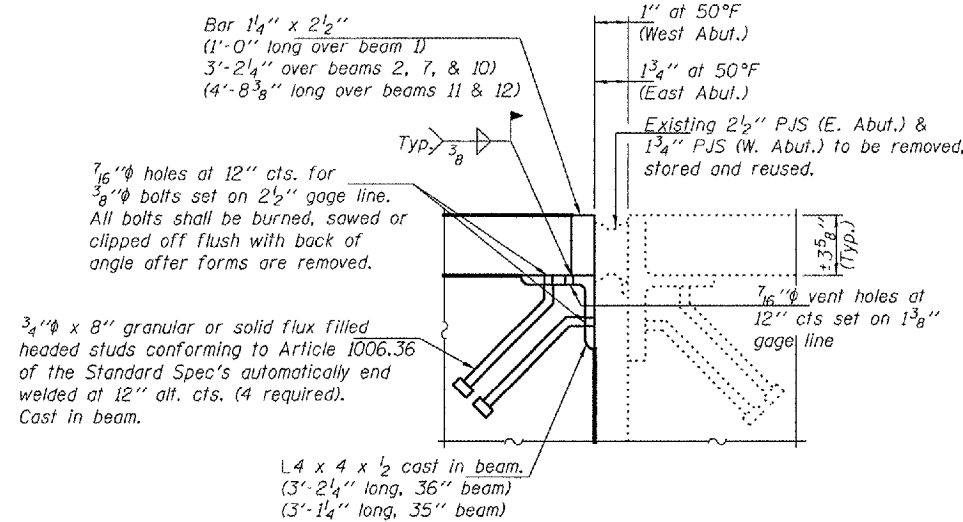


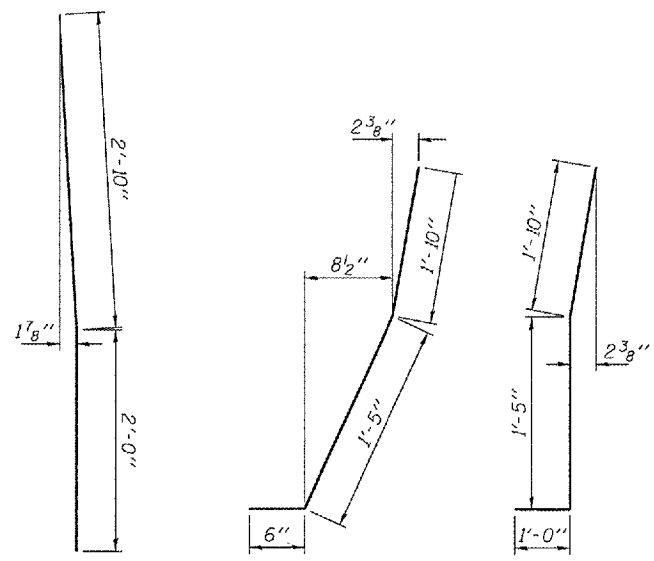
STATE OF ILLINOIS
DEPARTMENT OF TRANSPORTATION

ROUTE NO.	SECTION	COUNTY	TOTAL SHEETS	SHEET NO.	SHEET NO. 4 5 SHEETS
657		Henderson	14	13	
FED. HIGH. DIST. NO. 7		ILLINOIS	FED. AID PROJECT		

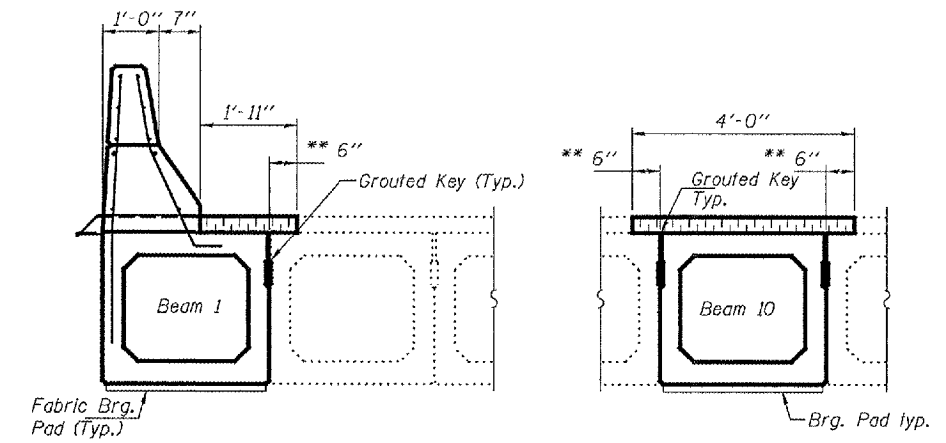
Contract Number: 68774



ABUTMENT JOINT DETAIL
(Cost Included with PPC Deck Beams)

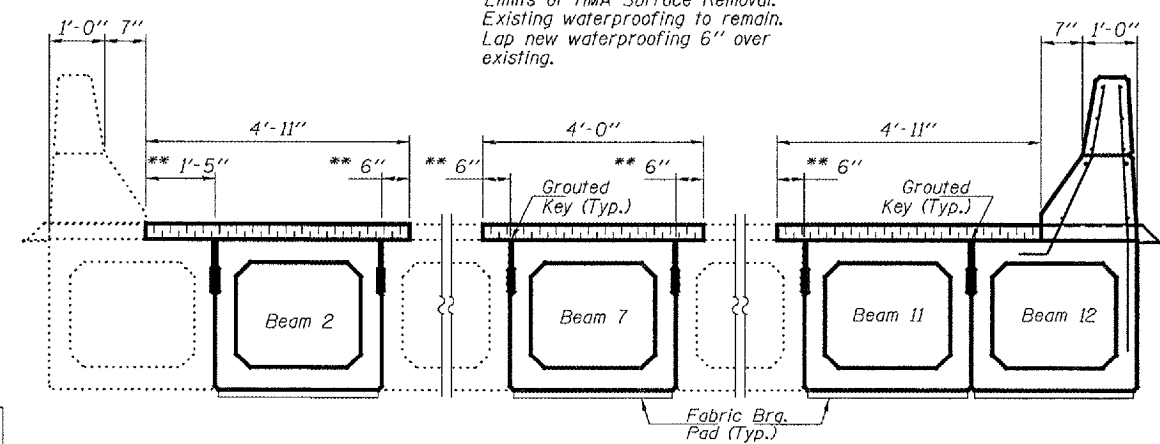


BAR D(E) **BAR D1(E)** **BAR D2(E)**

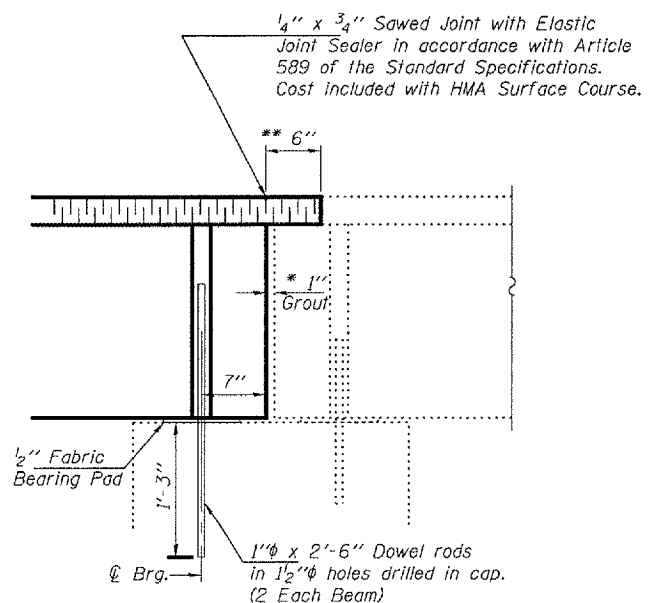


PARTIAL CROSS SECTION
(Span 1, Looking East)

** Limits of HMA Surface Removal. Existing waterproofing to remain. Lap new waterproofing 6" over existing.



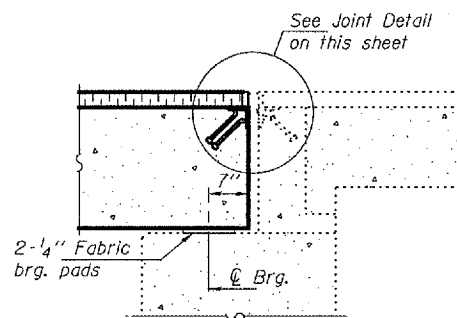
PARTIAL CROSS SECTION
(Span 2, Looking East)



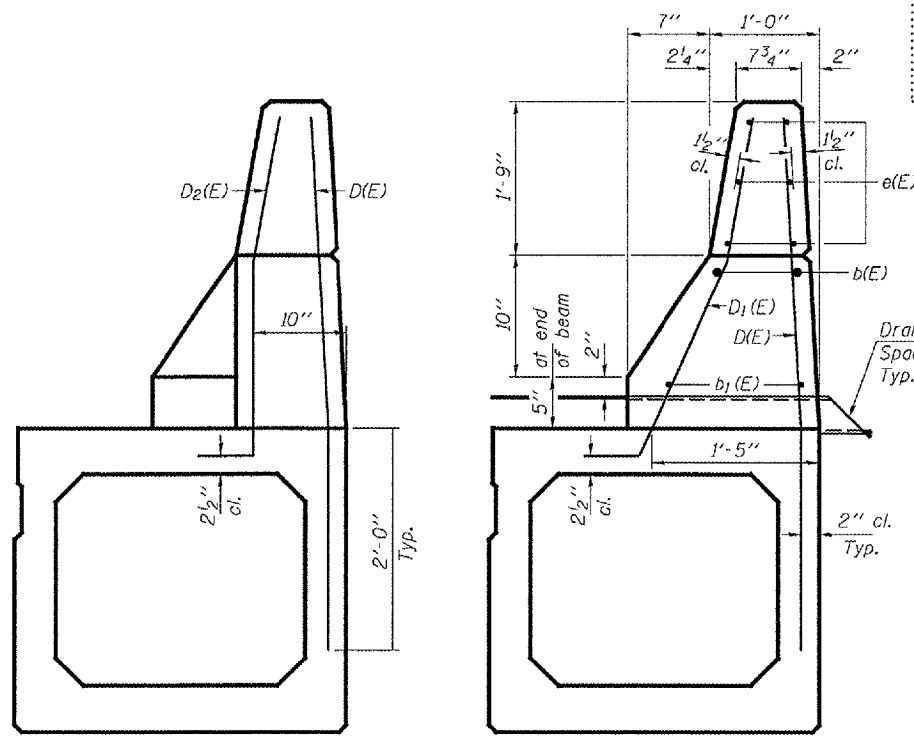
TYPICAL SECTION AT PIER

* 1" Jt. shall be filled with non-shrink grout. 1" dimension may vary to accommodate tolerance in beam lengths.

Notes:
After beams have been erected, holes shall be drilled into substructure and anchor dowels placed. Dowel holes shall be filled with non-shrink grout to top of beam and allowed to cure min. 24 hrs. prior to grouting the shear keys.
All horizontal dimensions are at right angles to beam ends.



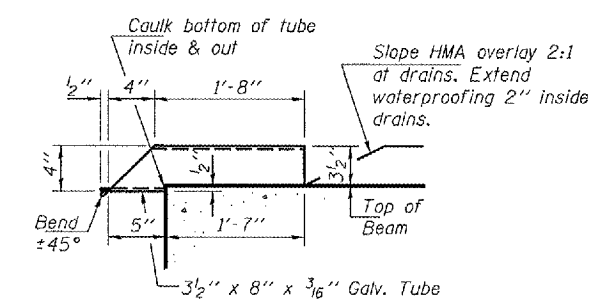
TYPICAL ABUTMENT JOINT



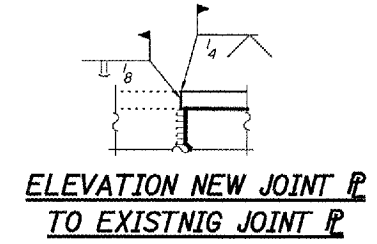
END VIEW OF CURB

SECTION THRU CURB

See sheet 5 of 5 for spacing of bars D1(E), D2(E) & D3(E) to be cast with Fascia Beams 1 & 12



DRAIN DETAIL
Cost included with Concrete Superstructure



REPAIR DETAILS
FA RT. 657
HENDERSON COUNTY
SN 036-0038

DESIGNED	ATH	FEBRUARY 26, 2008
CHECKED	AJB	EXAMINED <i>Carl Henry</i> ENGINEER OF STRUCTURAL SERVICES
DRAWN	Steffen	PASSED <i>Ralph E. Anderson</i> ENGINEER OF BRIDGES AND STRUCTURES
CHECKED	ATH AJB	