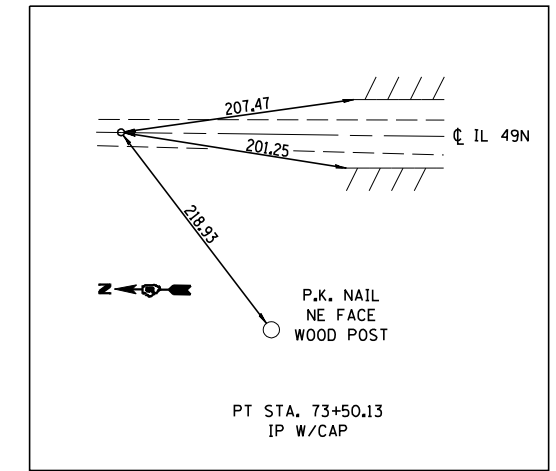
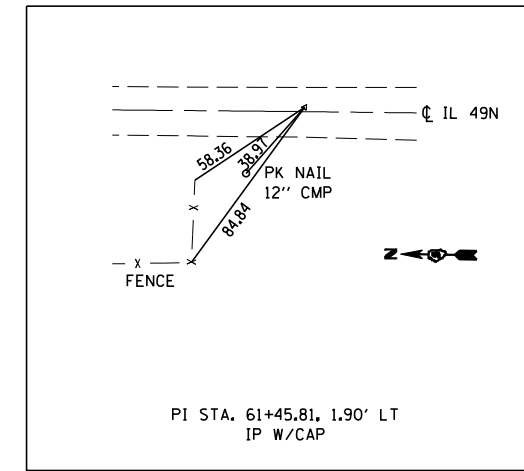
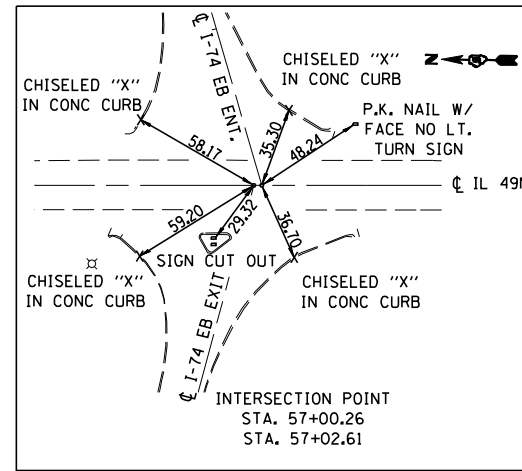
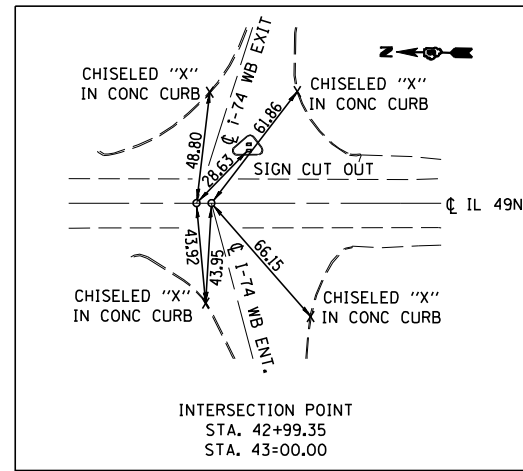
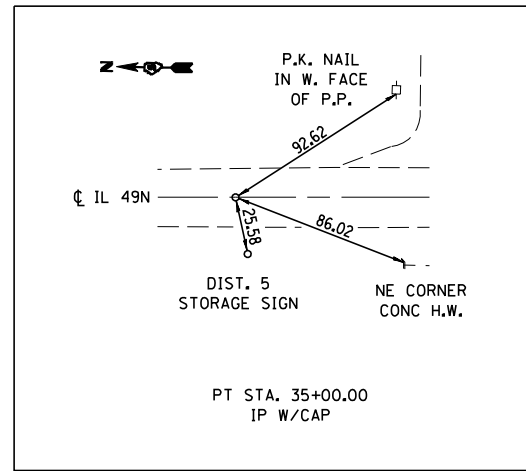


LOCAL TIES



BENCH MARKS

BM #1	CHISELED "□" ON E. FOUNDATION OF SIGN FOR SB IL 49 N. OF ENT. RAMP FOR WB I-74, STA. 42+01.867, 32.88' RT, ELEV 670.842
BM #2	CHISELED "□" ON SE. ABUTMENT, STA. 50+97.692, 16.81' RT, ELEV 688.262
BM #3	CHISELED "□" ON W. FOUNDATION OF SIGN FOR NB IL 49 S. OF ENT. RAMP FOR EB I-74, STA. 58+09.877, 33.23' LT, ELEV 671.562

REVISIONS	
NAME	DATE

ILLINOIS DEPARTMENT OF TRANSPORTATION
LOCAL TIES & BENCH MARKS
F.A.I. - 74

VERMILION COUNTY

SCALE: NONE
DATE: 06/2003
DRAWN BY: IYL
CHECKED BY: JH