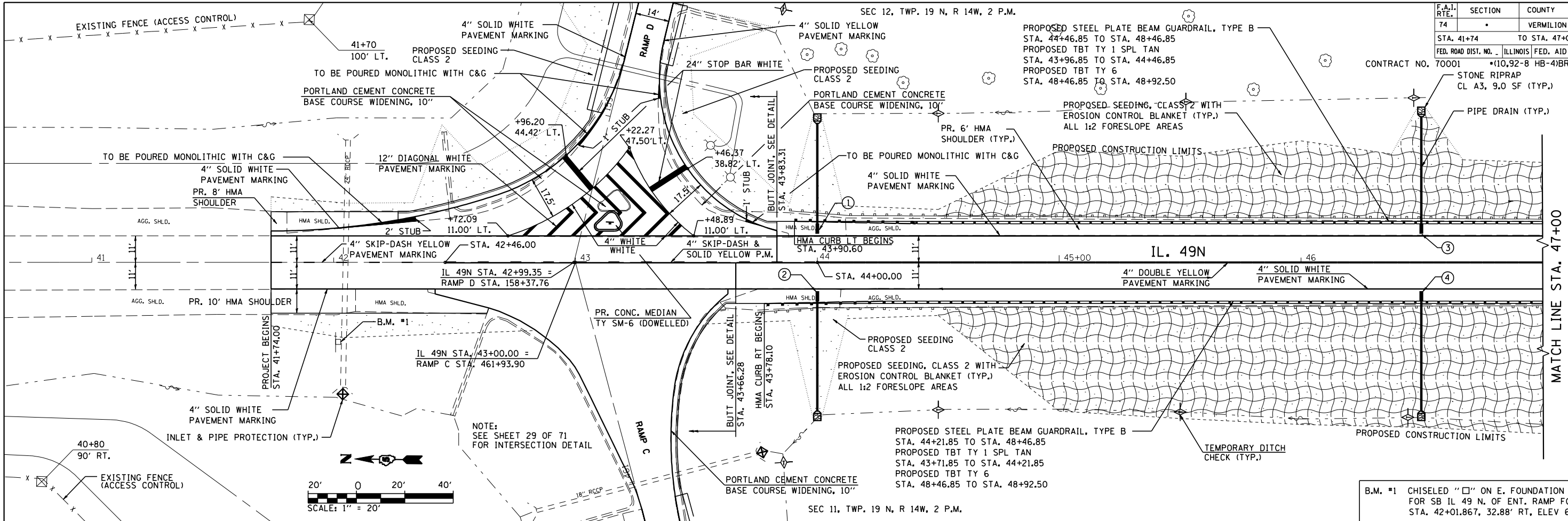


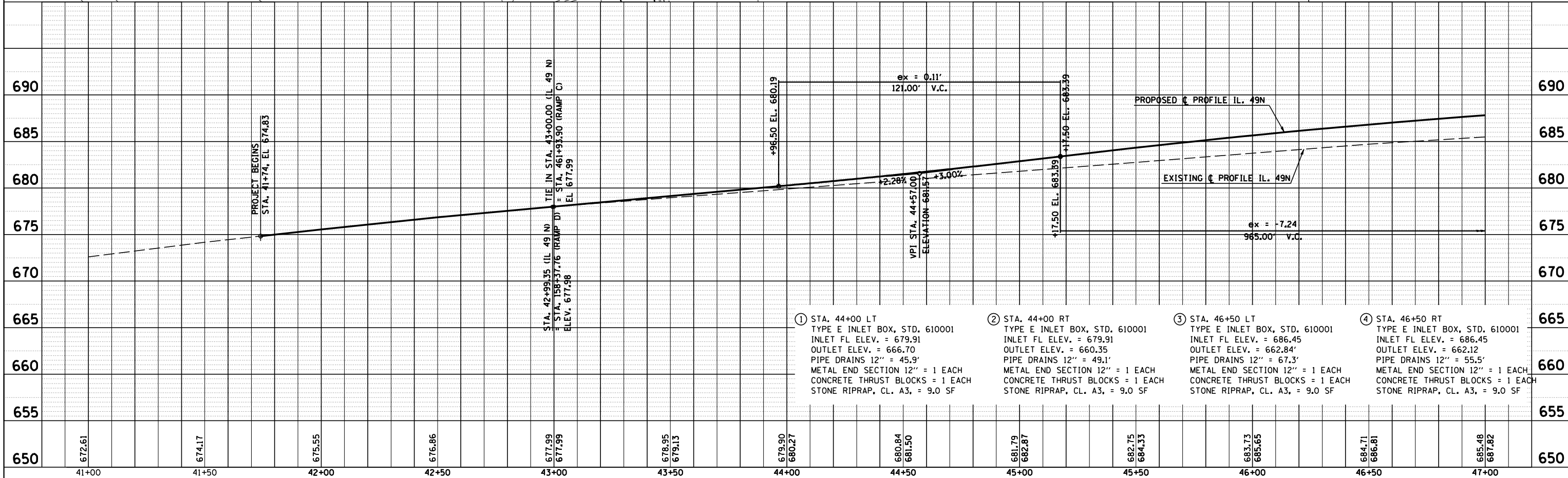
F.A.I. RTE.	SECTION	COUNTY	TOTAL SHEETS	SHEET NO.
74		VERMILION	71	22

STA. 41+74 TO STA. 47+00
 FED. ROAD DIST. NO. ILLINOIS FED. AID PROJECT

CONTRACT NO. 70001 * (10.92-8 HB-4)BR
 STONE RIPRAP CL. A3, 9.0 SF (TYP.)
 PIPE DRAIN (TYP.)



B.M. #1 CHISELED "□" ON E. FOUNDATION OF SIGN FOR SB IL 49 N. OF ENT. RAMP FOR WB I-74 STA. 42+01.867, 32.88' RT, ELEV 670.842



IL 49N STA. 41+74 TO STA. 47+00

PLAN	DATE
SURVEYED	
PLOTTED	
CHECKED	
NO. OF WAY CHECKED	
CADD FILE NAME	

PROFILE	DATE
SURVEYED	
PLOTTED	
CHECKED	
NO. NOTED	
STRUCTURE NOTATIONS CHRD	