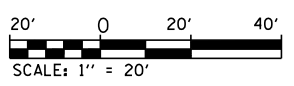
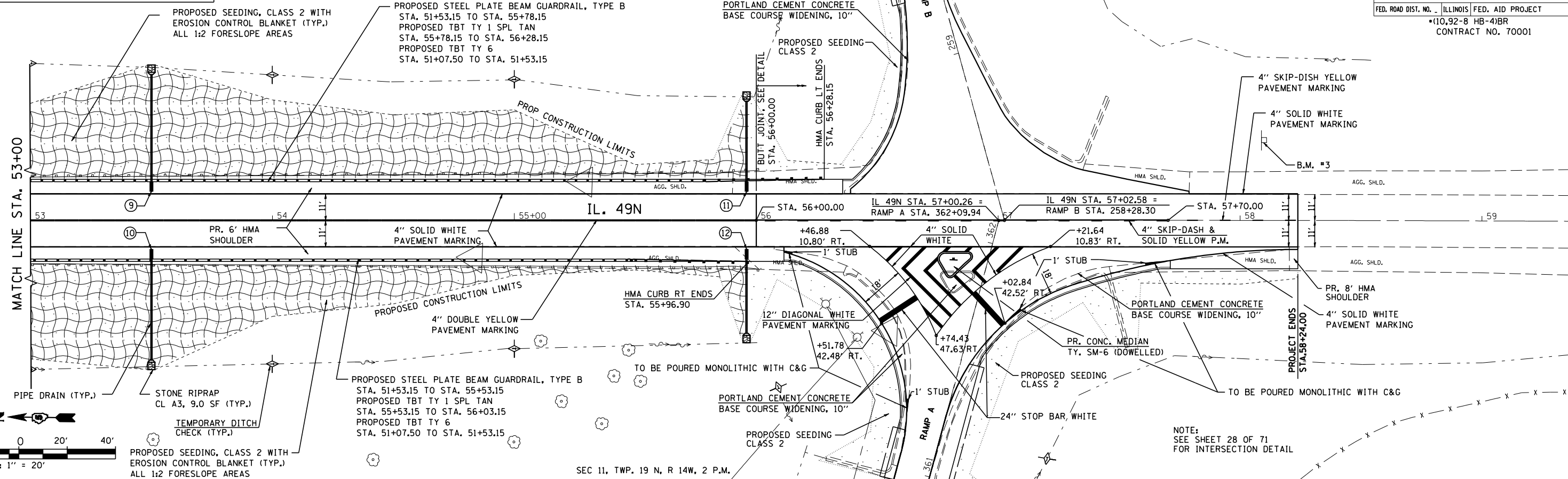


B.M. #3 CHISELED "□" ON W. FOUNDATION OF SIGN FOR NB IL 49 S. OF ENT. RAMP FOR EB I-74 STA. 58+09.877, 33.23' LT, ELEV 671.562

SEC 12, TWP. 19 N, R 14W, 2 P.M.

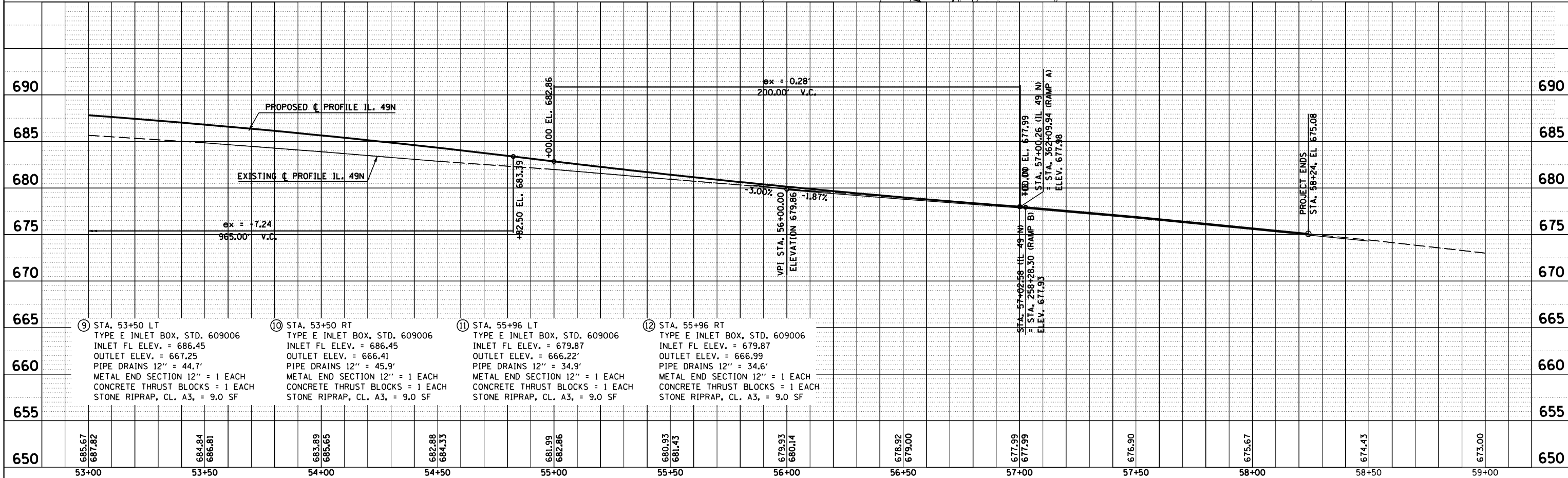
F.A.I. RTE.	SECTION	COUNTY	TOTAL SHEETS	SHEET NO.
74	*	VERMILION	71	24
STA. 53+00		TO STA. 58+24		
FED. ROAD DIST. NO. ILLINOIS FED. AID PROJECT				
*10,92-8 HB-4BR				
CONTRACT NO. 70001				



NOTE:  
SEE SHEET 28 OF 71  
FOR INTERSECTION DETAIL

PLAN	DATE
BY	
CHECKED	
NO.	

PROFILE	DATE
BY	
CHECKED	
NO.	



IL 49N STA. 53+00 TO STA. 58+24