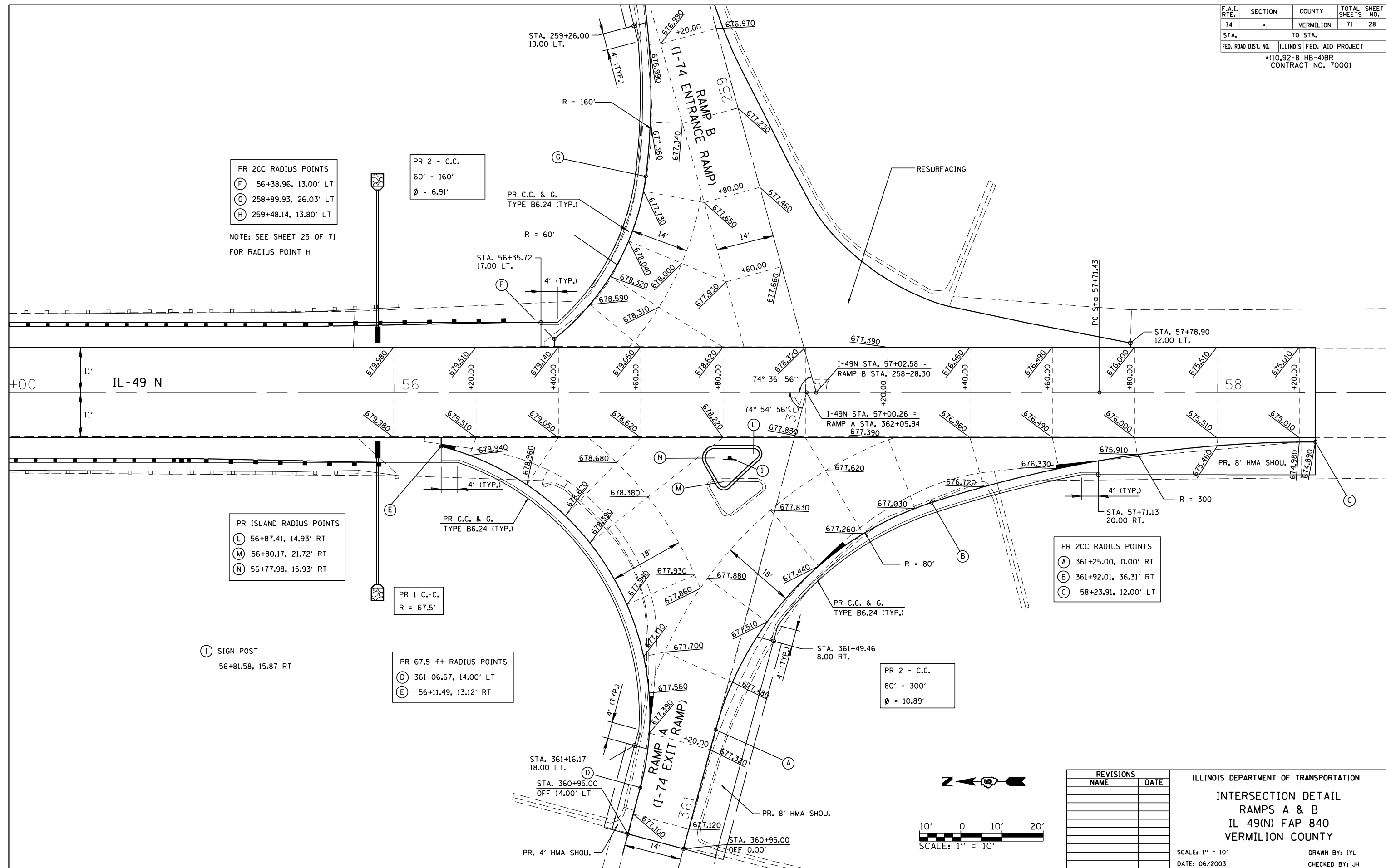


F.A.I. RTE.	SECTION	COUNTY	TOTAL SHEETS	SHEET NO.
74	.	VERMILION	71	28
STA. TO STA.		ILLINOIS FED. AID PROJECT		
FED. ROAD DIST. NO.		*10,92-8 HB-4)BR		
		CONTRACT NO. 70001		



PR 2CC RADIUS POINTS
 (F) 56+38.96, 13.00' LT
 (G) 258+89.93, 26.03' LT
 (H) 259+48.14, 13.80' LT

NOTE: SEE SHEET 25 OF 71
 FOR RADIUS POINT H

PR 2 - C.C.
 60' - 160'
 Ø = 6.91'

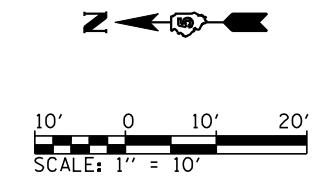
PR ISLAND RADIUS POINTS
 (L) 56+87.41, 14.93' RT
 (M) 56+80.17, 21.72' RT
 (N) 56+77.98, 15.93' RT

(1) SIGN POST
 56+81.58, 15.87 RT

PR 67.5 ft RADIUS POINTS
 (D) 361+06.67, 14.00' LT
 (E) 56+11.49, 13.12' RT

PR 2CC RADIUS POINTS
 (A) 361+25.00, 0.00' RT
 (B) 361+92.01, 36.31' RT
 (C) 58+23.91, 12.00' LT

PR 2 - C.C.
 80' - 300'
 Ø = 10.89'



REVISIONS	
NAME	DATE

ILLINOIS DEPARTMENT OF TRANSPORTATION
 INTERSECTION DETAIL
 RAMPS A & B
 IL 49(N) FAP 840
 VERMILION COUNTY
 SCALE: 1" = 10'
 DATE: 06/2003
 DRAWN BY: IYL
 CHECKED BY: JH