

F.A.I. RTE.	SECTION	COUNTY	TOTAL SHEETS	SHEET NO.
74		VERMILION	71	29
STA. TO STA.		FED. ROAD DIST. NO. ILLINOIS FED. AID PROJECT		
		•(10,92-8 HB-4)BR CONTRACT NO. 70001		

PR 2CC RADIUS POINTS

(A)	41+74.12, 13.00' LT
(B)	158+57.30, 37.39' LT
(C)	159+25.77, 00.00' LT

PR 2 - C.C.

80' - 300'
Ø = 11.00'

PR 65 ft RADIUS POINTS

(D)	43+83.31, 13.10' LT
(E)	159+35.83, 14.00' RT

PR 1 - C.C.

R = 65'

PR ISLAND RADIUS POINTS

(L)	43+09.80, 14.97' LT
(M)	43+14.87, 18.39' LT
(N)	43+16.28, 15.97' LT

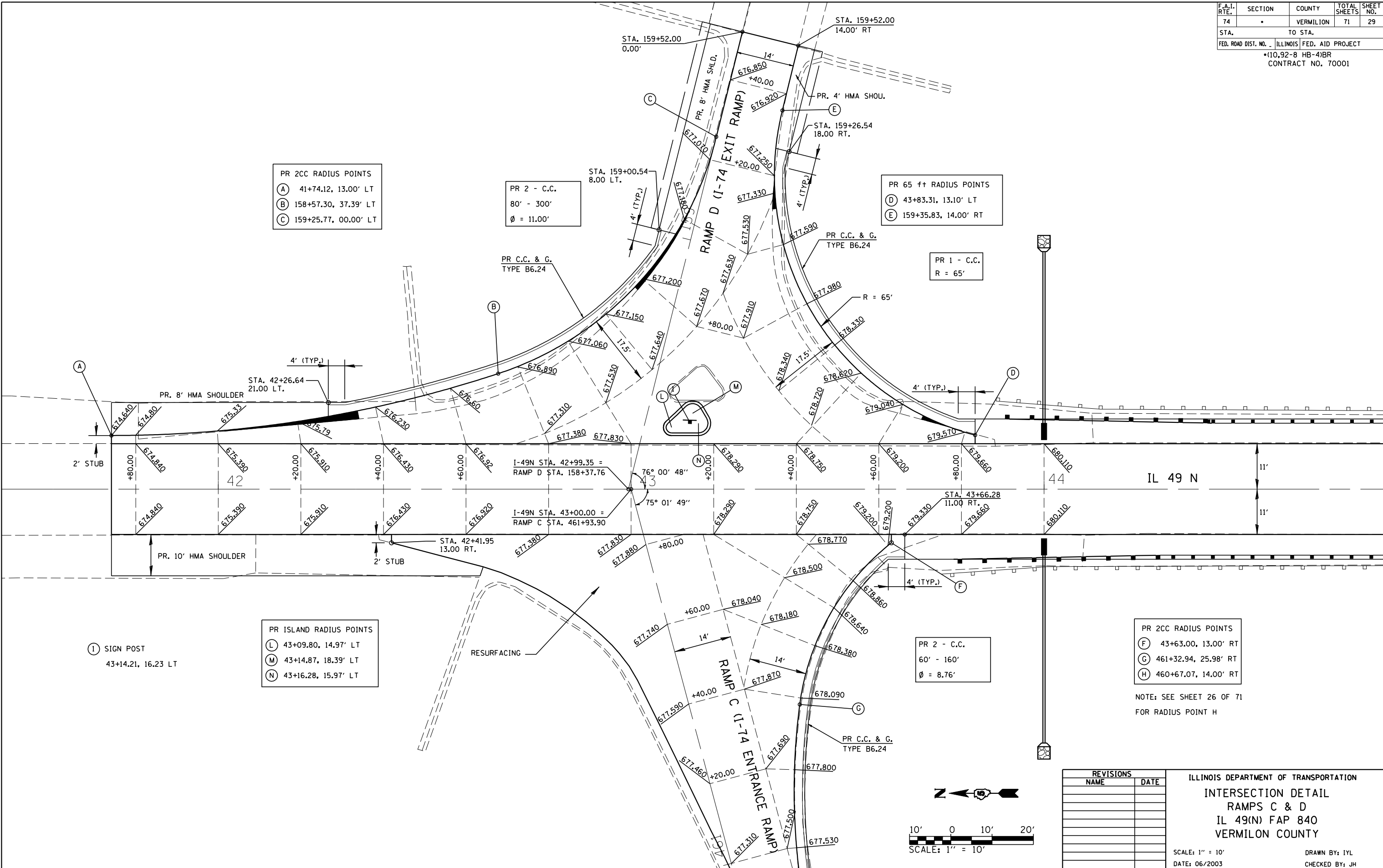
PR 2 - C.C.

60' - 160'
Ø = 8.76'

PR 2CC RADIUS POINTS

(F)	43+63.00, 13.00' RT
(G)	461+32.94, 25.98' RT
(H)	460+67.07, 14.00' RT

NOTE: SEE SHEET 26 OF 71 FOR RADIUS POINT H



REVISIONS	
NAME	DATE

ILLINOIS DEPARTMENT OF TRANSPORTATION
INTERSECTION DETAIL
RAMPS C & D
IL 49(N) FAP 840
VERMILION COUNTY

SCALE: 1" = 10'
DATE: 06/2003

DRAWN BY: IYL
CHECKED BY: JH