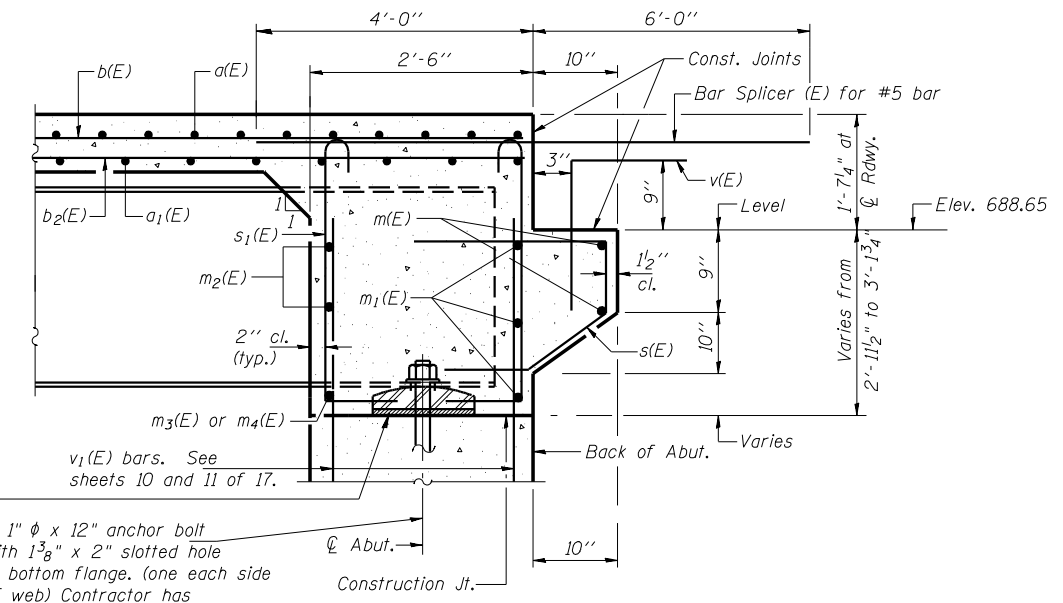


**DIAPHRAGM ELEVATION AT ABUTMENT**

Notes: Reinforcement bars in diaphragm are billed with superstructure on sheet 6 of 17.  
 Concrete in diaphragm is included with Concrete Superstructure on sheet 6 of 17.  
 For details of bars s(E) & s1(E) see sheet 6 of 17.  
 The s(E) and s1(E) bars shall be placed parallel to the beams. Spacing for these bars shall be at right angles to the beams.  
 For anchor bolt details see sheet 14 of 17.  
 For location of holes through web. See Sheet 8 of 17.  
 See sheet 13 of 17 for Bar Splicer Details.

**MIN. BAR LAP**  
 #6 bar = 2'-9"



1/8" elastomeric neoprene leveling pad according to Article 1052.02 of the Standard Specifications. Cost included with Structural Steel.

1" diameter x 12" anchor bolt with 1 3/8" x 2" slotted hole in bottom flange. (one each side of web) Contractor has option of cast in place or drilled installation.

**SECTION A-A**  
 Dimensions at right angles to abutment.  
 \* Cost included with Concrete Structures.

ILLINOIS DEPARTMENT OF TRANSPORTATION  
**END DIAPHRAGM DETAILS**  
 FAP ROUTE 840 (IL 49N)  
 OVER FAI RTE 74 (I-74)  
 SECTION (10-92-8HB-4) BR  
 VERMILION COUNTY  
 STA. 1160+20.53 (I-74)  
 STA. 50+00.00 (IL 49N)  
 STRUCTURE NO. 092-0203

REVISIONS	NAME		DATE
	NO.	BY	DATE

**LIN ENGINEERING, LTD.**  
 210 N. Chestnut | Chatham, Illinois 62629  
 (201) 483-4668 | FAX (201) 483-4106  
 Designed By: MTH | Checked By: STD | Drawn By: JMD  
 Date: 11/02 | File: 0920203.DGN