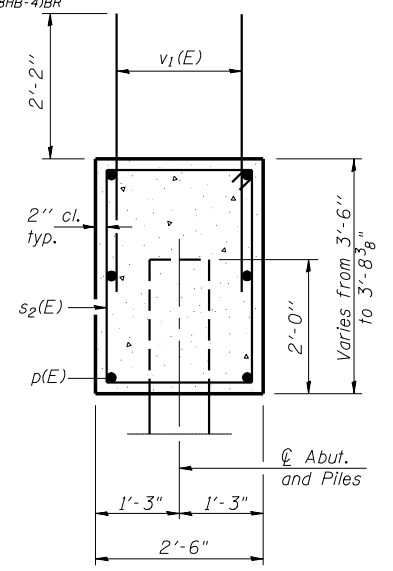
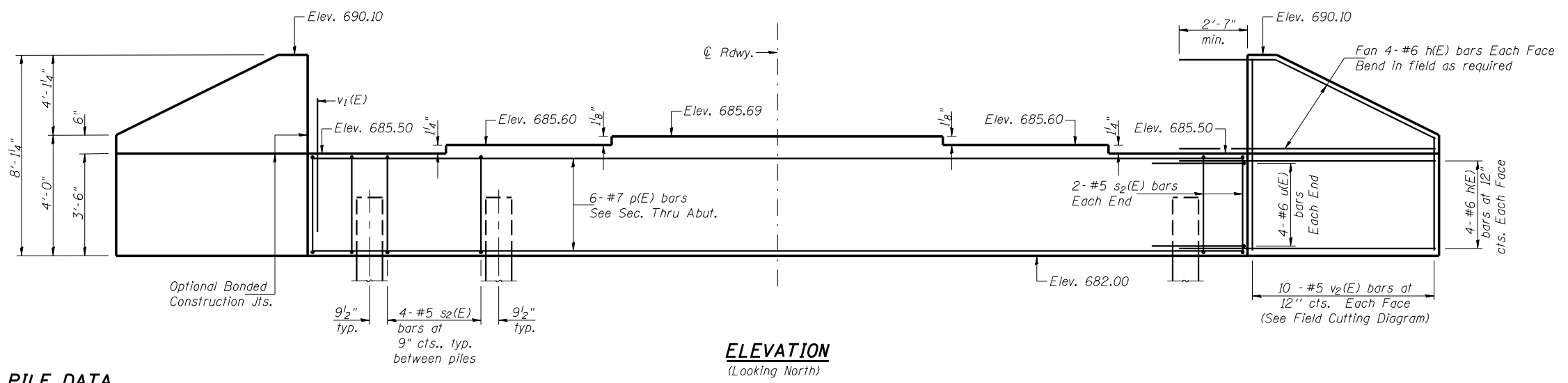
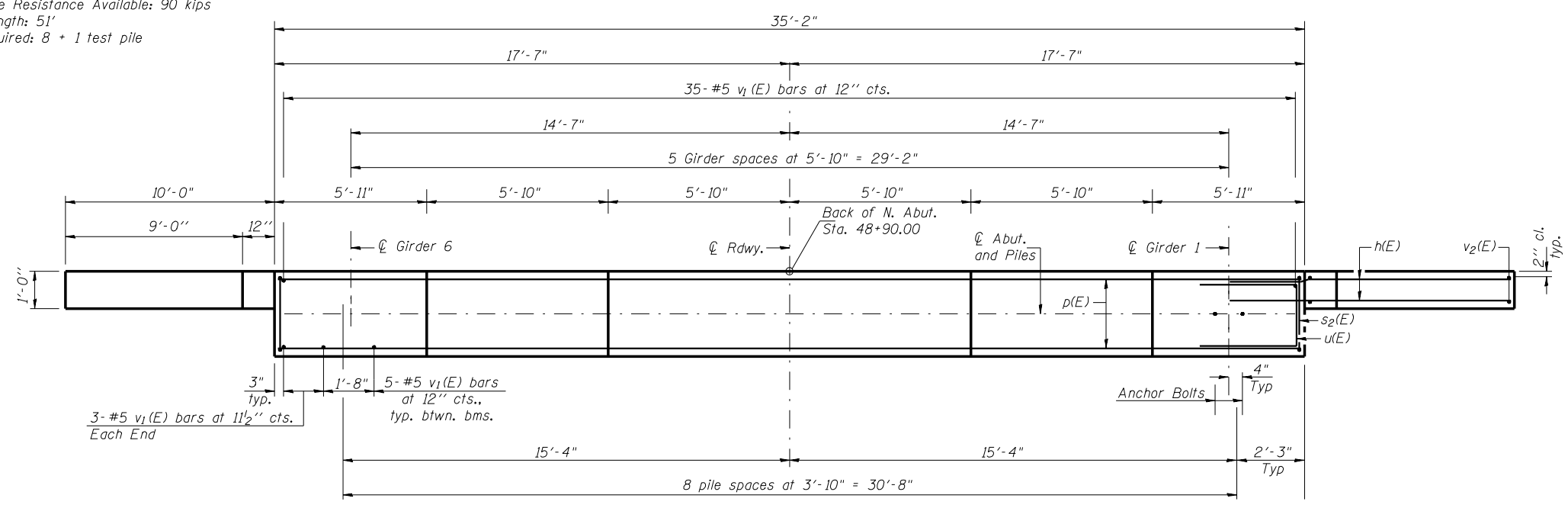


Notes: Pour steps monolithically with cap.
Reinforcement bars designated (E) shall be epoxy coated.
Space reinforcement in cap to miss anchor bolts.



PILE DATA

Type & Size: Metal Shell - 14" ϕ x 0.25" Walls
Normal Req'd Bearing: 270 kips
Allowable Resistance Available: 90 kips
Est. Length: 51'
No. Required: 8 + 1 test pile

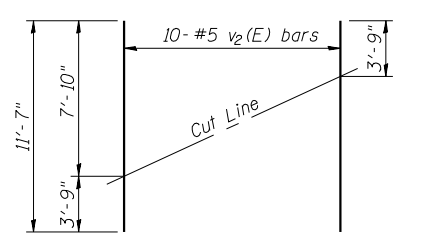


SEC. THRU ABUT.

BILL OF MATERIAL

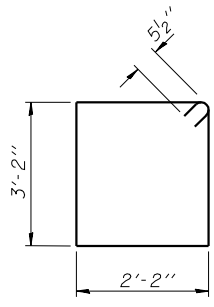
Bar	No.	Size	Length	Shape
h(E)	32	#6	12'-6"	—
p(E)	6	#7	34'-11"	—
s2(E)	24	#5	11'-7"	□
u(E)	8	#6	10'-1"	—
v1(E)	62	#5	4'-4"	—
v2(E)	20	#5	11'-7"	—
Concrete Structures		Cu. Yd.	15.6	
Reinforcement Bars, Epoxy Coated		Pound	1970	
Structure Excavation		Cu. Yd.	29.5	
Furnishing Metal Shell Piles 14" x 0.25"		Foot	408	
Driving Piles		Foot	408	
Test Pile Metal Shells		Each	1	

PLAN

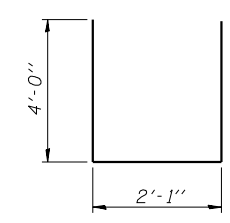


FIELD CUTTING DIAGRAM

Order v2(E) full length. Cut as shown and use remainder of bars in opposite face.



BAR s2(E)



BAR u(E)

LIN ENGINEERING, LTD.
210 N. Chestnut
Chatham, Illinois 62629
(217) 483-4668
Fax: (217) 483-4106
Designed By: MTH Checked By: STD Drawn By: JMD
Date: 11/02 File: 0920203.DWG

REVISIONS	
NAME	DATE

ILLINOIS DEPARTMENT OF TRANSPORTATION
NORTH ABUTMENT
FAP ROUTE 840 (IL 49N)
OVER FAI RTE 74 (I-74)
SECTION (10-92-8HB-4) BR
VERMILION COUNTY
STA. 1160+20.53 (I-74)
STA. 50+00.00 (IL 49N)
STRUCTURE NO. 092-0203