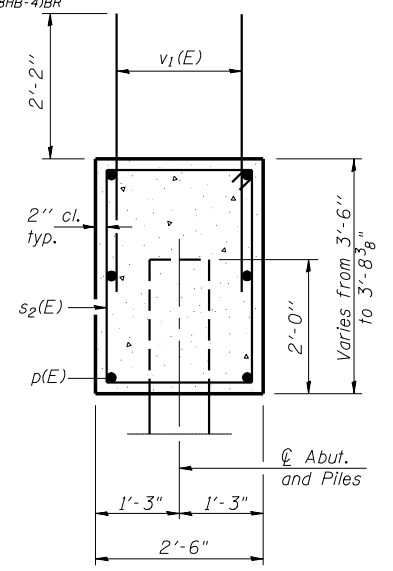
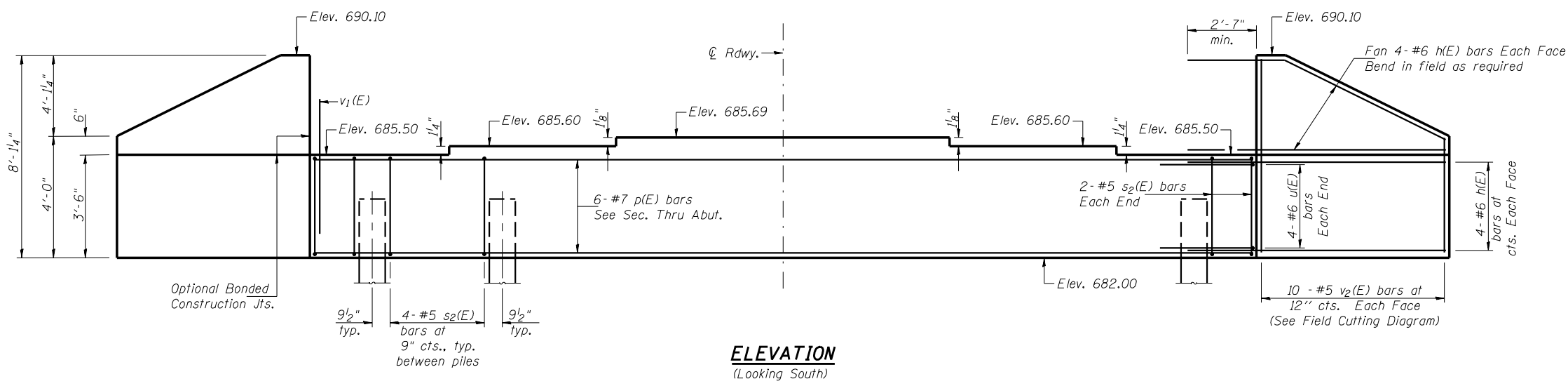
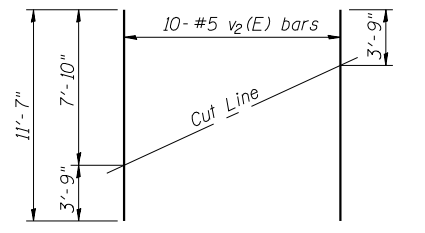
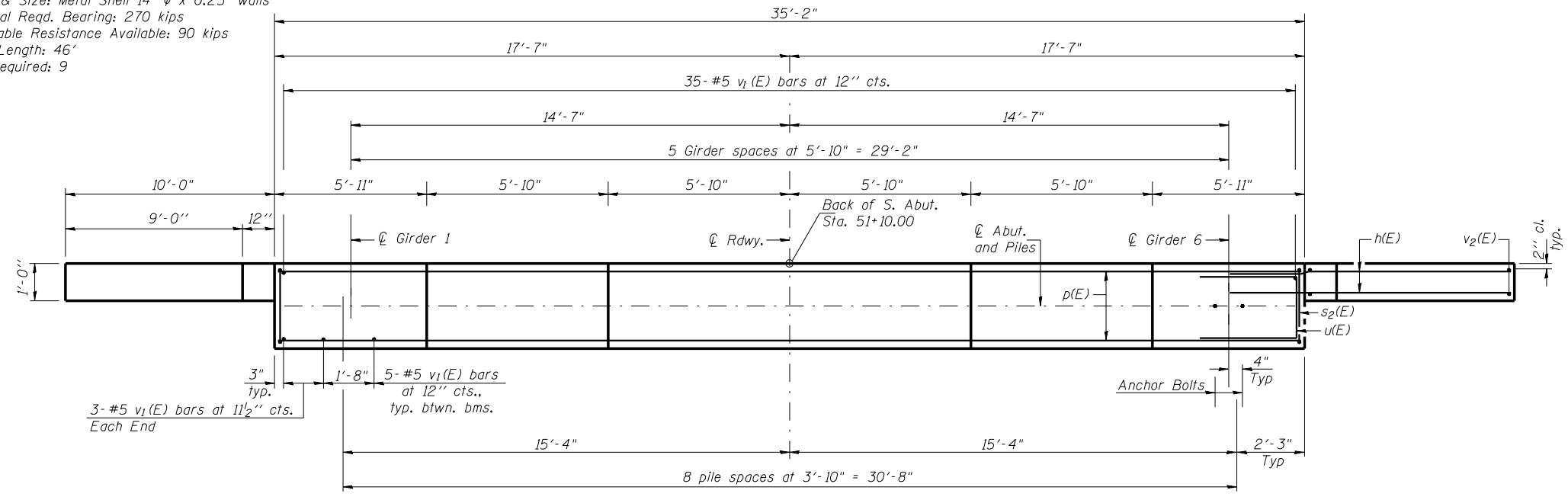


Notes: Four steps monolithically with cap.  
Reinforcement bars designated (E) shall be epoxy coated.  
Space reinforcement in cap to miss anchor bolts.

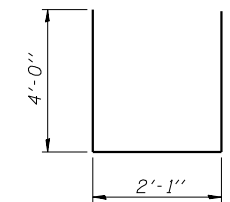
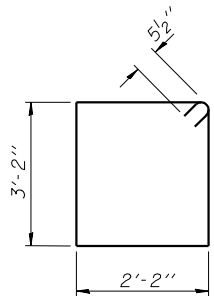


**PILE DATA**

Type & Size: Metal Shell 14"  $\phi$  x 0.25" walls  
Nominal Reqd. Bearing: 270 kips  
Allowable Resistance Available: 90 kips  
Est. Length: 46'  
No. Required: 9



Order v2(E) full length. Cut as shown and use remainder of bars in opposite face.



**BILL OF MATERIAL**

Bar	No.	Size	Length	Shape
h(E)	32	#6	12'-6"	—
p(E)	6	#7	34'-11"	—
s2(E)	24	#5	11'-7"	□
u(E)	8	#6	10'-1"	U
v1(E)	62	#5	4'-4"	—
v2(E)	20	#5	11'-7"	—
Concrete Structures		Cu. Yd.	15.6	
Reinforcement Bars, Epoxy Coated		Pound	1970	
Structure Excavation		Cu. Yd.	29.5	
Furnishing Metal Shell Piles 14" x 0.25"		Foot	414	
Driving Piles		Foot	414	

**LIN ENGINEERING, LTD.**  
210 N. Chestnut  
Chatham, Illinois 62629  
(217) 483-4668  
Fax: (217) 483-4106  
Designed By: MTH  
Checked By: STD  
Drawn By: JMD  
Date: 11/02  
File: 0920203.DWG

REVISIONS	
NAME	DATE

ILLINOIS DEPARTMENT OF TRANSPORTATION  
**SOUTH ABUTMENT**  
FAP ROUTE 840 (IL 49N)  
OVER FAI RTE 74 (I-74)  
SECTION (10-92-8HB-4) BR  
VERMILION COUNTY  
STA. 1160+20.53 (I-74)  
STA. 50+00.00 (IL 49N)  
STRUCTURE NO. 092-0203