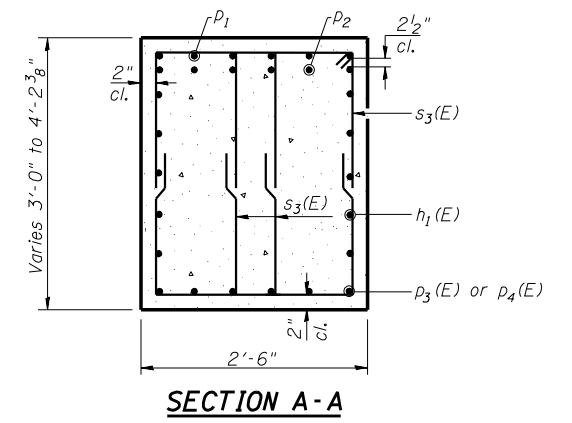
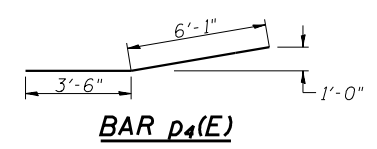
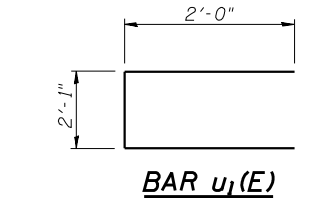
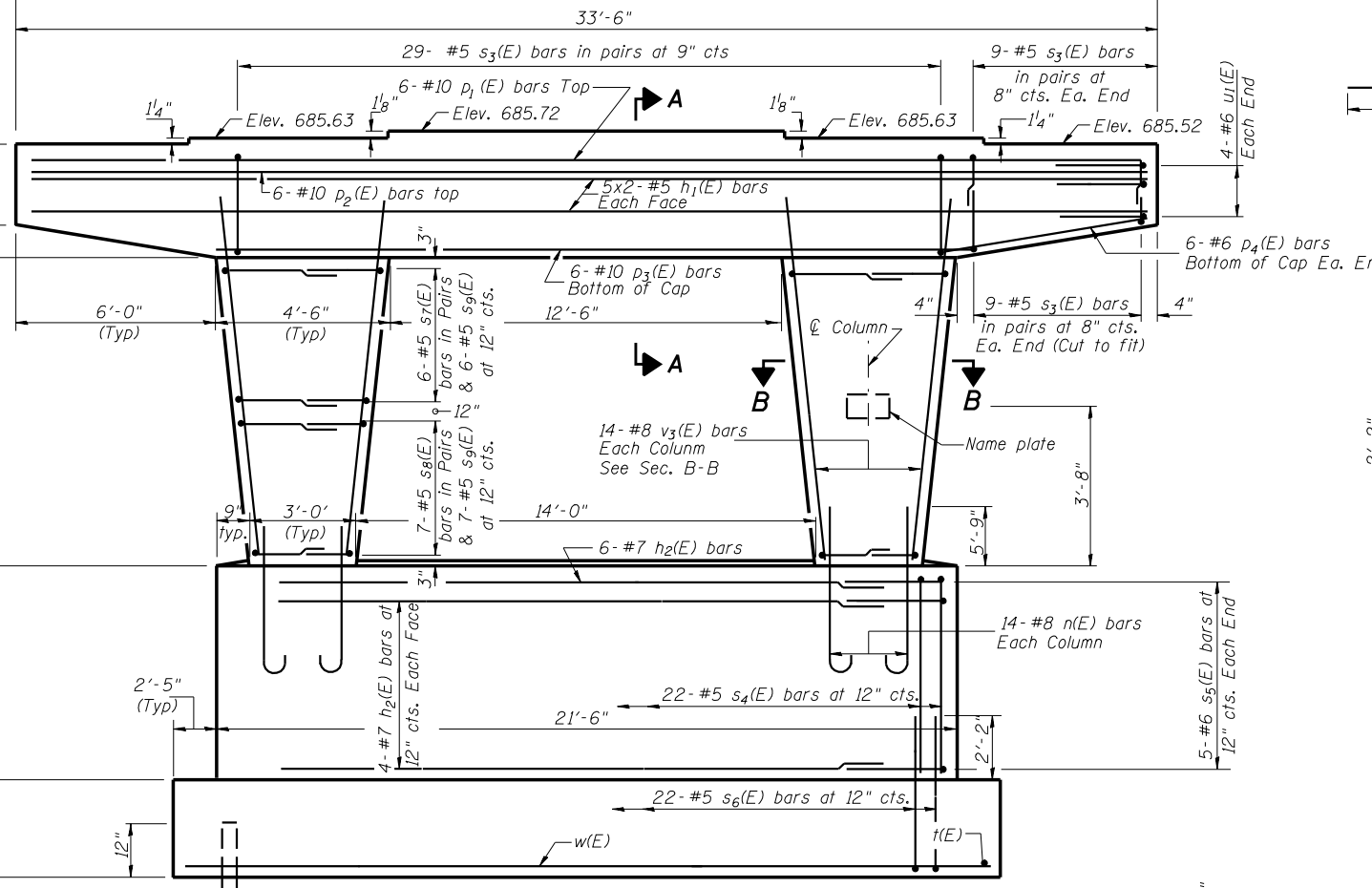
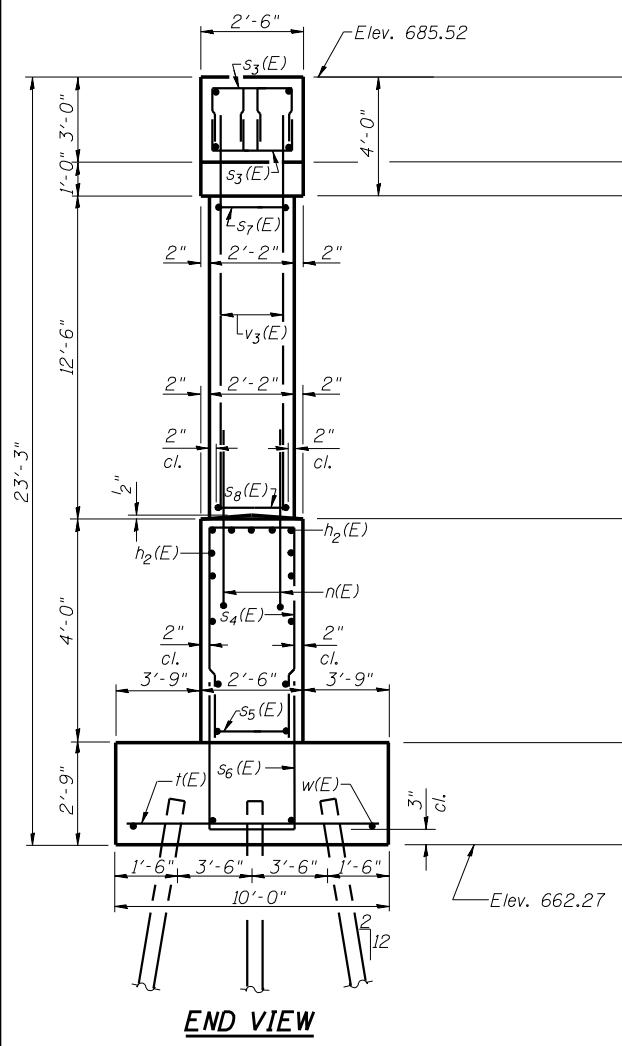
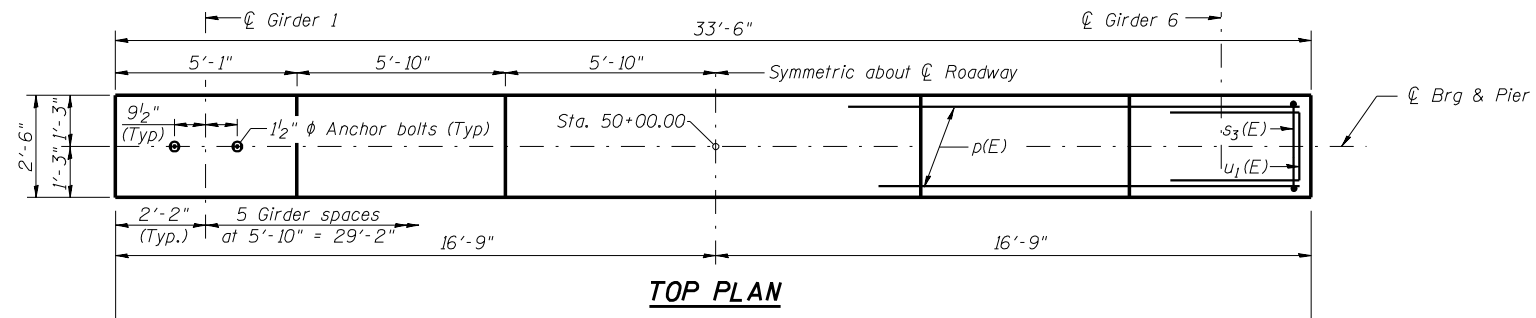


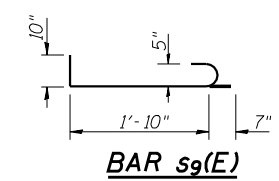
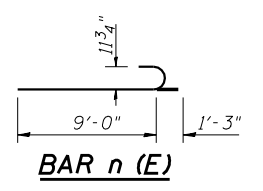
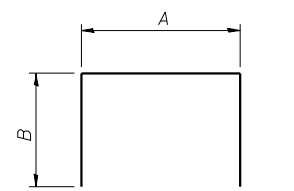
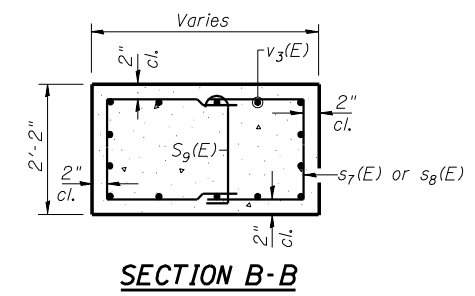
Notes:  
 1. Space reinforcement in cap to miss anchor bolts.  
 2. Pour steps monolithically with cap.  
 3. The existing Piles shall be cut off 1'-0" below the bottom of the new footing.

**MIN BAR LAP**  
 #5 = 2'-2"

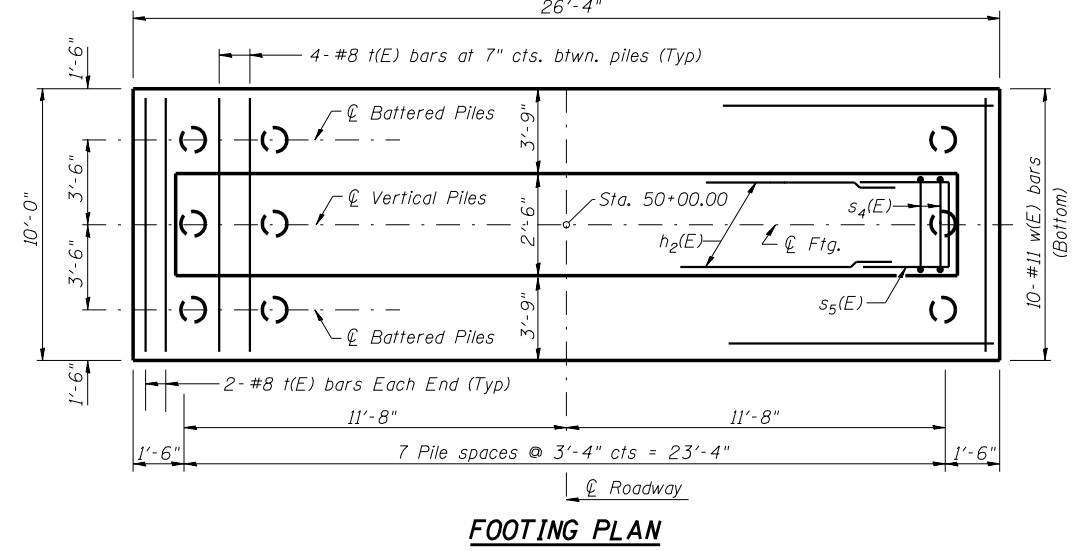


**BILL OF MATERIAL**

Bar	No.	Size	Length	Shape
h1(E)	20	#5	17'-8"	—
h2(E)	14	#7	21'-2"	—
n(E)	28	#8	10'-3"	—
p1(E)	6	#10	38'-0"	—
p2(E)	6	#10	33'-0"	—
p3(E)	6	#10	21'-0"	—
p4(E)	12	#6	9'-7"	—
s3(E)	188	#5	7'-4"	—
s4(E)	22	#5	9'-8"	—
s5(E)	10	#6	7'-1"	—
s6(E)	22	#5	11'-6"	—
s7(E)	24	#5	8'-2"	—
s8(E)	28	#5	7'-4"	—
s9(E)	26	#5	3'-3"	—
t(E)	32	#8	9'-9"	—
u1(E)	8	#6	6'-1"	—
v3(E)	28	#8	14'-6"	—
w(E)	10	#11	26'-0"	—
Structure Excavation		Cu. Yd.	62.8	
Concrete Structures		Cu. Yd.	53.5	
Reinforcement Bars, Epoxy Coated		Pound	10200	
Furnishing Metal Shell Piles 14" x 0.25"		Foot	792	
Driving Piles		Foot	792	



**PILE DATA**  
 Type & Size - Metal shell - 14"φ x 0.25" walls  
 Nominal Required Bearing: 300 kips  
 Allowable Resistance Available: 100 kips  
 Est. Length - 33'  
 No. Req'd. - 24



**REVISIONS**

NAME	DATE

**LIN ENGINEERING, LTD.**  
 210 N. Chestnut, Chatham, Illinois 62629  
 (201) 483-4668 Fax: (201) 483-4106  
 Designed By: MTH Checked By: STD Drawn By: JMD  
 Date: 11/02 File: 0920203.DWG

ILLINOIS DEPARTMENT OF TRANSPORTATION  
**PIER DETAILS**  
 FAP ROUTE 840 (IL 49N)  
 OVER FAI RTE 74 (I-74)  
 SECTION (10-92-8HB-4) BR  
 VERMILION COUNTY  
 STA. 1160+20.53 (I-74)  
 STA. 50+00.00 (IL 49N)  
 STRUCTURE NO. 092-0203