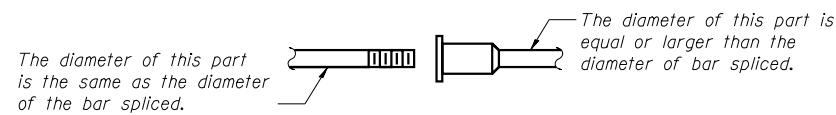


NOTES

Bar splicer assemblies shall be of an approved type and shall develop in tension at least 125 percent of the yield strength of the lapped reinforcement bars.
 Splicer rods shall be of minimum 60 ksi yield strength, threaded or coiled full length.
 All reinforcement bars shall be lapped and tied to the splicer rods or dowel bars.
 Bar splicer assemblies shall be epoxy coated according to the requirements for reinforcement bars.
 Other systems of similar design may be submitted to the Engineer for approval. Approval shall be based on certified test results from an approved testing laboratory that the proposed bar splicer assembly satisfies the following requirements:

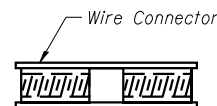
- ① Minimum Capacity = $1.25 \times f_y \times A_l$
 (Tension in kips)
 - ② Minimum *Pull-out Strength = $0.66 \times f_y \times A_l$
 (Tension in kips)
- Where f_y = Yield strength of lapped reinforcement bars in ksi.
 A_l = Tensile stress area of lapped reinforcement bars.
 * = 28 day concrete



ROLLED THREAD DOWEL BAR



**** ONE PIECE**

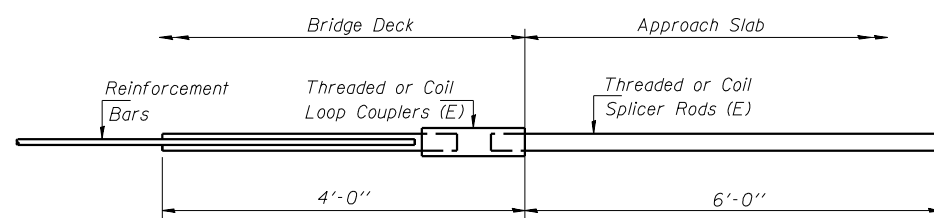


WELDED SECTIONS

BAR SPLICER ASSEMBLY ALTERNATIVES

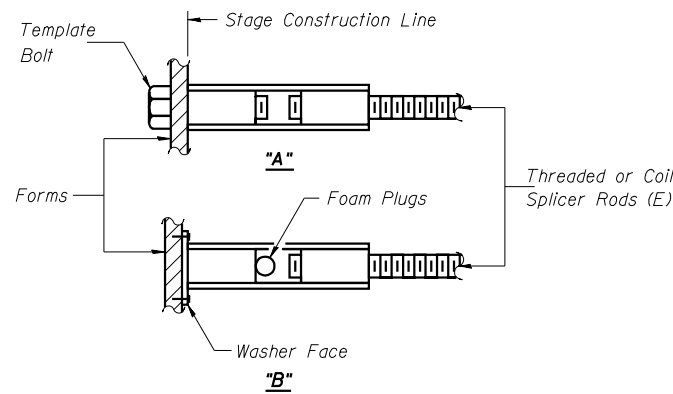
** Heavy Hex Nuts conforming to ASTM A 563, Grade C, D or DH may be used.

BAR SPLICER ASSEMBLIES			
Bar Size to be Spliced	Splicer Rod or Dowel Bar Length	Strength Requirements	
		Min. Capacity kips - tension	Min. Pull-Out Strength kips - tension
#4	1'-8"	14.7	7.9
#5	2'-0"	23.0	12.3
#6	2'-7"	33.1	17.4
#7	3'-5"	45.1	23.8
#8	4'-6"	58.9	31.3
#9	5'-9"	75.0	39.6
#10	7'-3"	95.0	50.3
#11	9'-0"	117.4	61.8



**INTEGRAL ABUTMENT
 BAR SPLICER ASSEMBLY DETAIL
 FOR #5 BAR**

Min. Capacity = 23.0 kips - tension
Min. Pull-out Strength = 12.3 kips - tension
No. Required = 64



INSTALLATION AND SETTING METHODS

"A" : Set bar splicer assembly by means of a template bolt.
 "B" : Set bar splicer assembly by nailing to wood forms or cementing to steel forms.
 (E) : Indicates epoxy coating.

LIJ ENGINEERING, LTD.
 210 N. Chestnut
 Chatham, Illinois 62629
 (217) 483-4668 FAX (217) 483-4106
 Designed By: MTH Checked By: STD Drawn By: JMD
 Date: 11/02 File: 0920203.DWG

REVISIONS	
NAME	DATE

ILLINOIS DEPARTMENT OF TRANSPORTATION
BAR SPLICER DETAILS
 FAP ROUTE 840 (IL 49N)
 OVER FAI RTE 74 (I-74)
 SECTION (10-92-8HB-4) BR
 VERMILION COUNTY
 STA. 1160+20.53 (I-74)
 STA. 50+00.00 (IL 49N)
 STRUCTURE NO. 092-0203