

F.A.I. RTE.	SECTION	COUNTY	TOTAL SHEETS	SHEET NO.
74	.	VERMILION	71	56
STA.		TO STA.		
FED. ROAD DIST. NO.	ILLINOIS	FED. AID PROJECT		
*10,92-8 HB-41BR				

CONTRACT NO. 70001

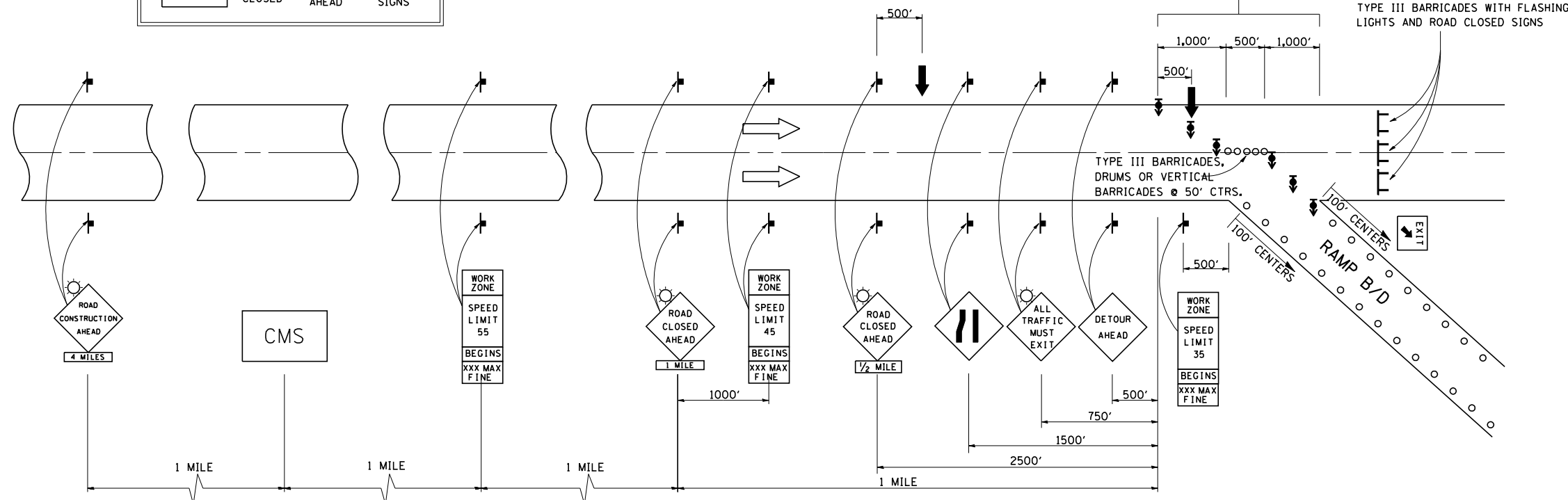
INTERSTATE DETOUR USING ENTRANCE AND EXIT RAMP

DIRECTIONAL BARRICADES WITH STEADY BURNING LIGHTS AT 50' (15 m) CTS. IN TAPER. DRUMS WITH STEADY BURNING LIGHTS IN TANGENT (BETWEEN TAPERS) AT 100' (30 m) CTS.

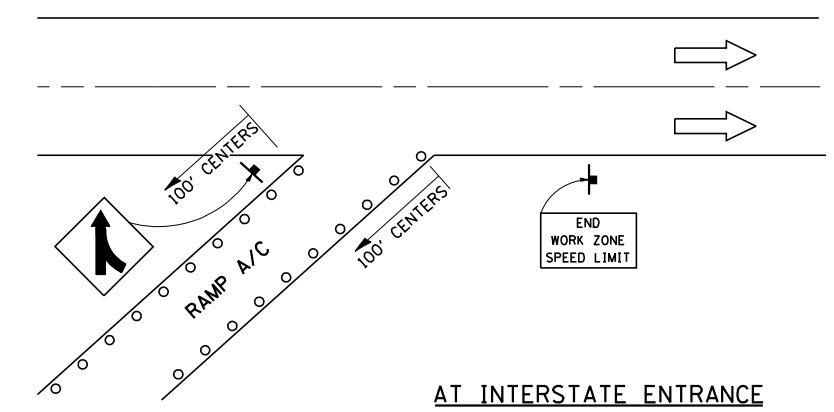
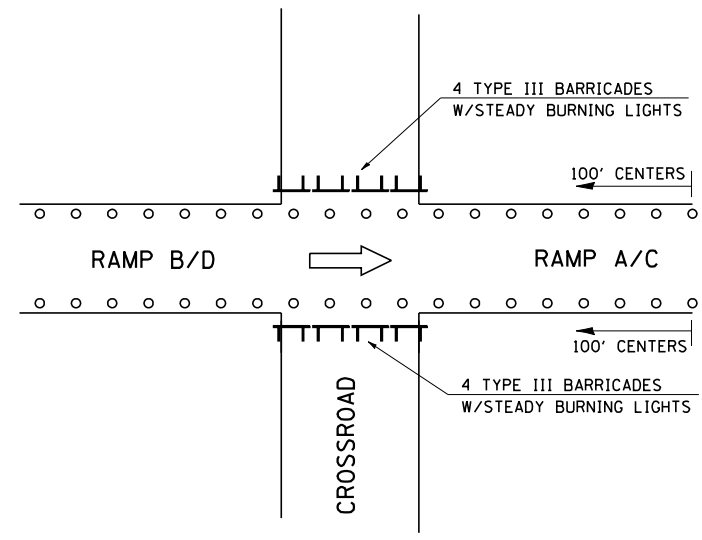
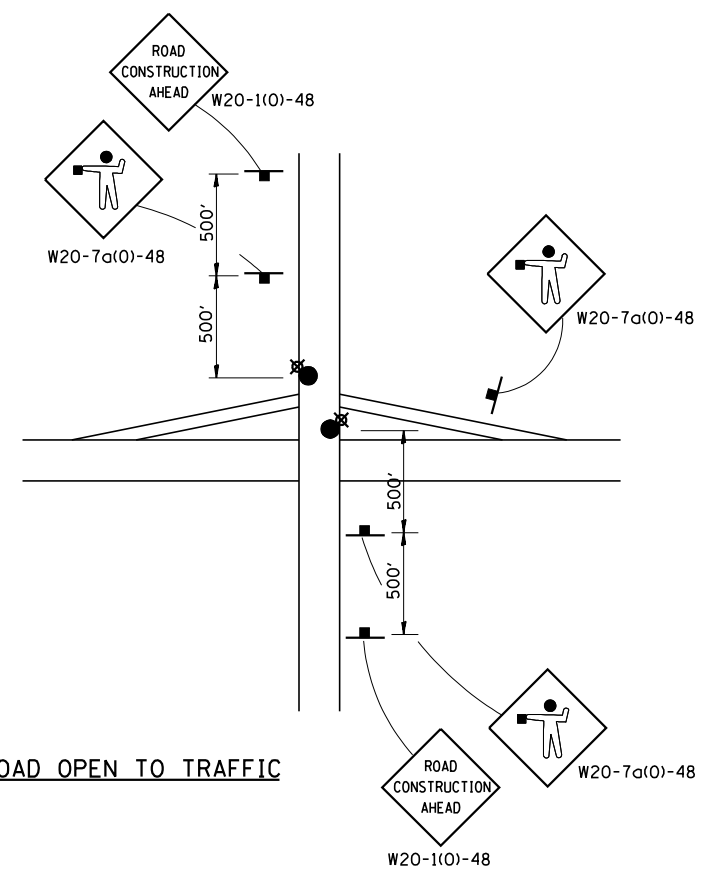
FOR OFF PEAK CLOSURES LESS THAN 24 HOURS, THE TANGENT SECTION MAY BE OMITTED BY APPROVAL OF THE ENGINEER.

A CHANGEABLE MESSAGE SIGN SHALL BE USED IN ADVANCE OF SIGNING TO WARN OF CLOSURE

CMS	ROAD CLOSED	3 MILES AHEAD	FOLLOW DETOUR SIGNS
-----	-------------	---------------	---------------------



SYMBOLS	
	ARROW BOARD
	SIGN
	DRUM W/STEADY BURNING LIGHT
	TYPE III BARRICADE
	DIRECTIONAL BARRICADE W/STEADY BURNING LIGHT
	LIGHTED FLAGGER STATIONS



Note: All dimensions are in INCHES (millimeters) unless otherwise shown.

DATE	REVISIONS	NAME

ILLINOIS DEPARTMENT OF TRANSPORTATION

TRAFFIC CONTROL & PROTECTION FOR TEMPORARY DETOUR

DISTRICT 5 DETAIL NO. X7011005

PLOT DATE = 12/11/2007
 FILE NAME = c:\projects\450\0899\structure 082-0105\detail2007.dgn
 PLOT SCALE = 42.3525' / IN.
 USER NAME = collierb

CROSSROAD OPEN TO TRAFFIC

CROSSROAD CLOSED TO TRAFFIC

AT INTERSTATE ENTRANCE