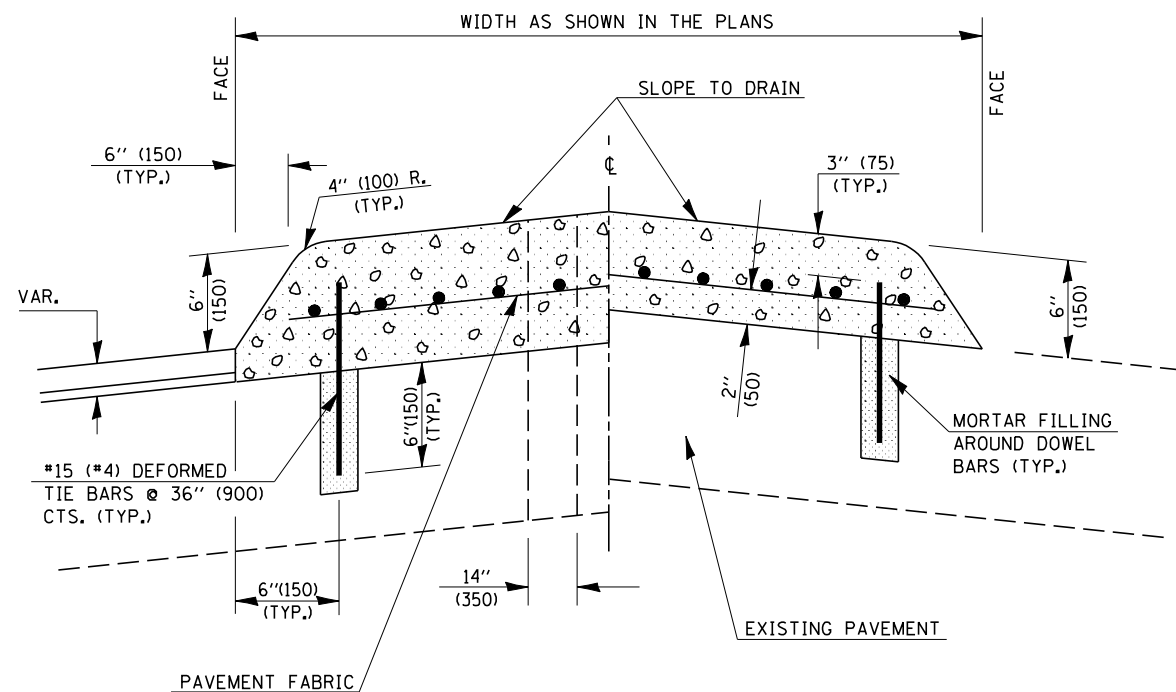


F.A.I. RTE.	SECTION	COUNTY	TOTAL SHEETS	SHEET NO.
74		VERMILION	71	62
STA.	TO STA.			
FED. ROAD DIST. NO.	ILLINOIS	FED. AID PROJECT		
		(10,92-8 HB-4)BR		

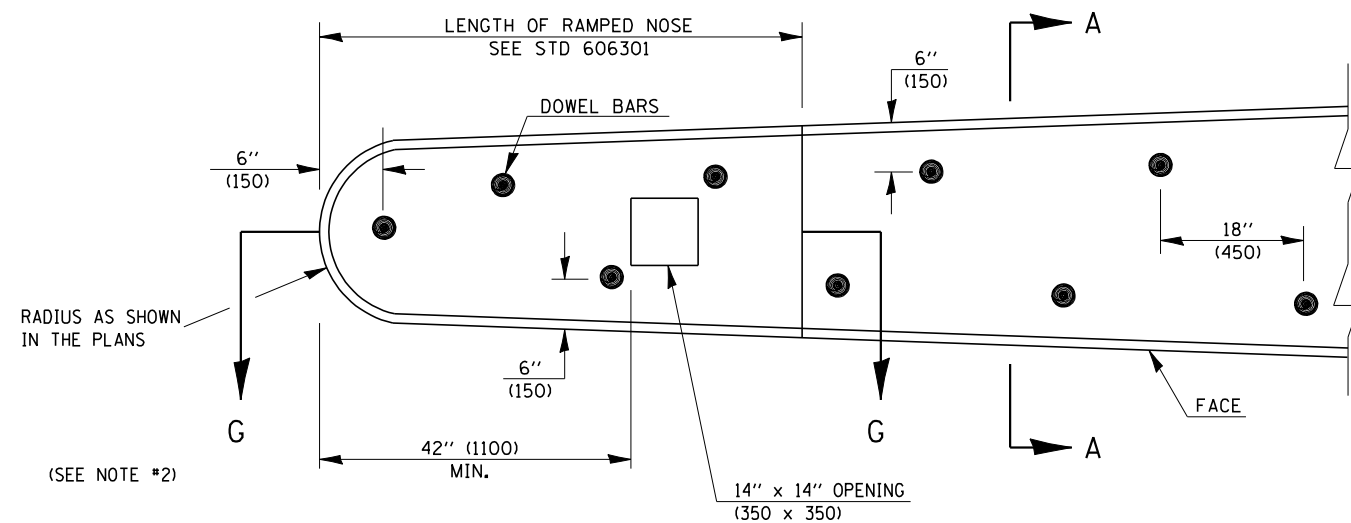
CONTRACT NO. 70001

### GENERAL NOTES

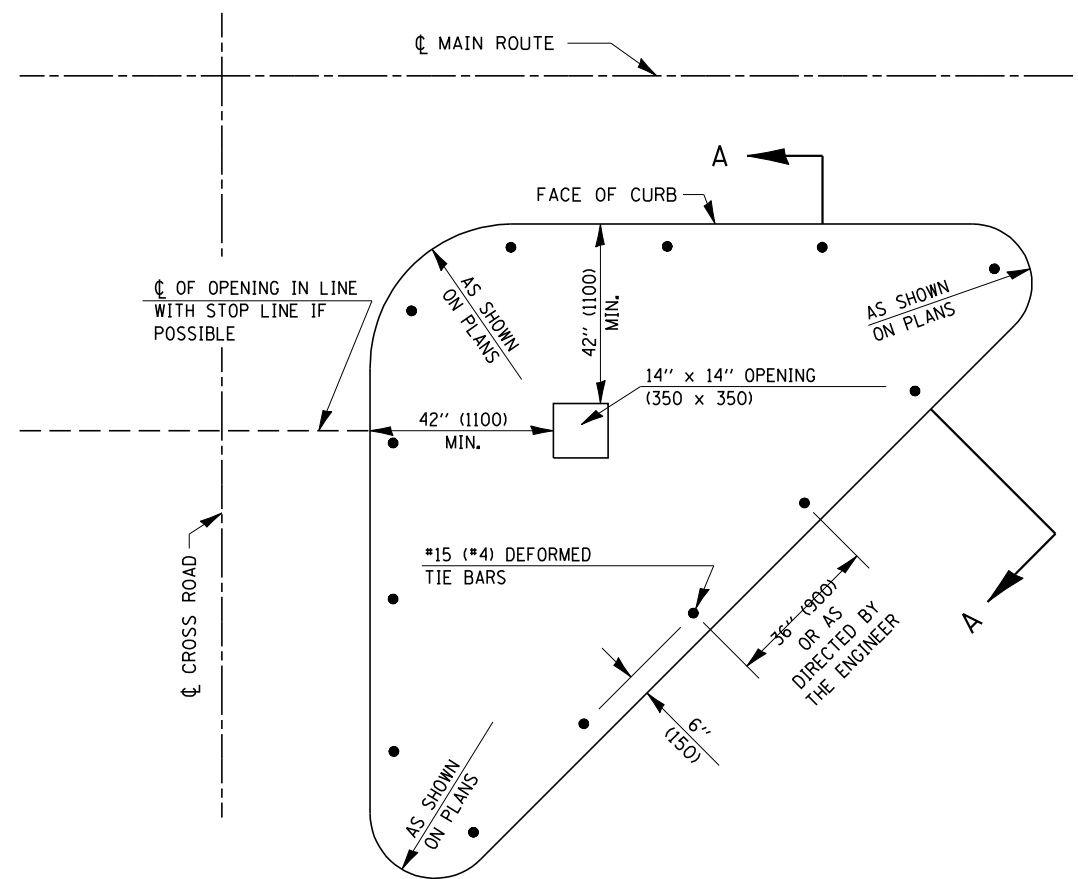
1. THE GENERAL NOTES FOR STANDARD 606301 SHALL APPLY.
2. DOWEL BARS @ 36" (900) CTS. OR AS DIRECTED BY THE ENGINEER.
3. THIS WORK WILL BE PAID FOR AT THE CONTRACT UNIT PRICE PER SO FOOT (m ) FOR CONCRETE MEDIAN, TYPE SM-6 (SM-15) (DOWELED), INCLUDING THE COST OF FURNISHING AND INSTALLING THE DOWEL BARS, MORTAR FILLING, PAVEMENT FABRIC AND THE REMOVAL AND DISPOSAL OF THE EXISTING PAVEMENT FOR THE 14" x 14" (350 x 350) OPENING, IF REQUIRED, AND NO ADDITIONAL COMPENSATION WILL BE ALLOWED.



SECTION A-A



PLAN OF MEDIAN



PLAN OF CORNER ISLAND

Note: All dimensions are in INCHES (millimeters) unless otherwise shown.

DATE	REVISIONS	NAME
11/06	REPLACED DETAIL A-5.07	TJB

ILLINOIS DEPARTMENT OF TRANSPORTATION

**CONCRETE MEDIAN,  
TYPE SM-6 (SM-15)  
(DOWELED)**

**DISTRICT 5 DETAIL NO. 60622354**

PLOT DATE = 12/11/2007  
 FILE NAME = c:\p\projects\ad81019\structure\_092-0105\detail\2007.dgn  
 PLOT SCALE = 41.5/965 / IN.  
 USER NAME = collarba