

STATE OF ILLINOIS  
DEPARTMENT OF TRANSPORTATION

ROUTE NO.	SECTION	COUNTY	TOTAL SHEETS	SHEET NO.	SHEET NO. 4 14 SHEETS
F.A.I. 55	(84-2B-1)1-1	SANGAMON	31	13	
FED. ROAD DIST. NO. 7	ILLINOIS	FED. AID PROJECT			

Contract #72349

**BEAM 3**

Location	Station	Offset	Theoretical Grade Elevations	Theoretical Grade Elevations Adjusted For Dead Load Deflection
Back of West Abut.	35+41.66	0.54	551.12	551.12
CL Brg West Abut.	35+43.55	0.49	551.12	551.12
A	35+53.55	0.24	551.14	551.16
B	35+63.55	0.02	551.16	551.18
C	35+73.55	-0.16	551.18	551.19
D	35+83.55	-0.30	551.20	551.20
CL Existing Pier 2	35+89.70	-0.37	551.21	551.21
E	35+99.70	-0.45	551.23	551.23
F	36+09.71	-0.49	551.25	551.26
G	36+19.71	-0.50	551.27	551.29
H	36+29.71	-0.47	551.29	551.30
CL Existing Pier 1	36+43.71	-0.36	551.33	551.33
I	36+53.71	-0.25	551.35	551.36
J	36+63.71	-0.09	551.38	551.40
K	36+73.71	0.10	551.41	551.42
L	36+83.71	0.33	551.43	551.44
CL Brg East Abut.	36+89.86	0.49	551.45	551.45
Back of East Abut.	36+91.75	0.54	551.46	551.46

**BEAM 4**

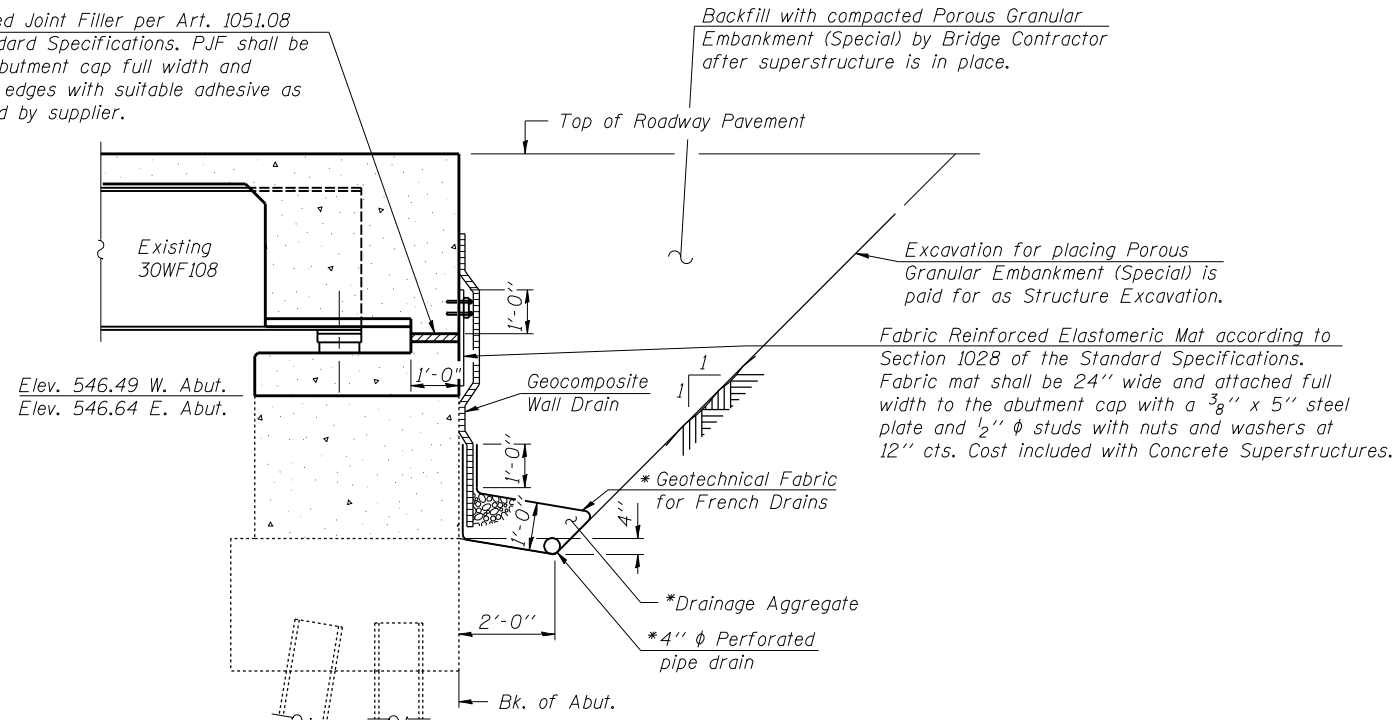
Location	Station	Offset	Theoretical Grade Elevations	Theoretical Grade Elevations Adjusted For Dead Load Deflection
Back of West Abut.	35+41.00	6.81	551.23	551.23
CL Brg West Abut.	35+42.89	6.76	551.23	551.23
A	35+52.87	6.50	551.25	551.27
B	35+62.84	6.29	551.28	551.30
C	35+72.82	6.11	551.30	551.32
D	35+82.79	5.96	551.33	551.33
CL Existing Pier 2	35+88.93	5.89	551.34	551.34
E	35+98.91	5.81	551.37	551.37
F	36+08.89	5.76	551.40	551.41
G	36+18.87	5.75	551.42	551.44
H	36+28.85	5.78	551.45	551.46
CL Existing Pier 1	36+42.82	5.88	551.48	551.48
I	36+52.80	5.99	551.51	551.51
J	36+62.77	6.14	551.53	551.55
K	36+72.75	6.33	551.56	551.58
L	36+82.72	6.56	551.59	551.60
CL Brg East Abut.	36+88.86	6.72	551.60	551.60
Back of East Abut.	36+90.75	6.77	551.61	551.61

**BEAM 5**

Location	Station	Offset	Theoretical Grade Elevations	Theoretical Grade Elevations Adjusted For Dead Load Deflection
Back of West Abut.	35+40.35	13.08	551.33	551.33
CL Brg West Abut.	35+42.24	13.03	551.34	551.34
A	35+52.19	12.77	551.37	551.38
B	35+62.14	12.55	551.40	551.42
C	35+72.09	12.37	551.43	551.44
D	35+82.04	12.22	551.46	551.46
CL Existing Pier 2	35+88.17	12.15	551.48	551.48
E	35+98.13	12.06	551.51	551.51
F	36+08.08	12.01	551.54	551.55
G	36+18.04	12.00	551.58	551.59
H	36+27.99	12.02	551.60	551.61
CL Existing Pier 1	36+41.93	12.12	551.64	551.64
I	36+51.88	12.23	551.66	551.67
J	36+61.84	12.38	551.69	551.70
K	36+71.79	12.57	551.71	551.73
L	36+81.74	12.79	551.74	551.75
CL Brg East Abut.	36+87.87	12.94	551.76	551.76
Back of East Abut.	36+89.75	12.99	551.76	551.76

2" Preformed Joint Filler per Art. 1051.08 of the Standard Specifications. PJF shall be bonded to abutment cap full width and vertically at edges with suitable adhesive as recommended by supplier.

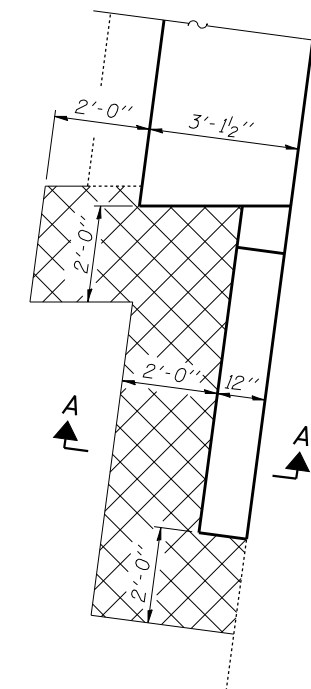
Backfill with compacted Porous Granular Embankment (Special) by Bridge Contractor after superstructure is in place.



**SECTION THRU SEMI-INTEGRAL ABUTMENT**  
(Horiz. dim. @ Rt. L's)

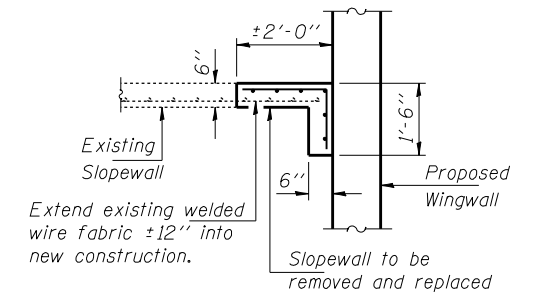
\* Included in the cost of Pipe Underdrains for Structures.

Note:  
All drainage system components shall extend to 2'-0" from the end of each wingwall except an outlet pipe shall extend until intersecting with the side slopes. The pipes shall drain into concrete headwalls. (See Article 601.05 of the Standard Specifications and Highway Standard 601101).



**DETAIL A**

Indicates removal and replacement of slopewall.



**SECTION A-A**

Slopewall shall be reinforced with welded wire fabric, 6" x 6"-W4.0 x W4.0 weighing 58 Lbs. per 100 sq. ft.

The removal and replacement of existing slopewall in conjunction with concrete removal and abutment reconstruction shall be paid for as Slopewall 6" (Typical each corner of bridge).

Any additional fill required at the corners of the abutments shall be included with Structure Excavation.

**TOP OF SLAB ELEVATIONS**  
**F.A.I. ROUTE 55 - SEC. (84-2B-1)1-1**  
**SANGAMON COUNTY**  
**STATION 36+16.64**  
**STRUCTURE NO. 084-0025**

DESIGNED	Tom L. Kurtenbach
CHECKED	Philip E. Coppernoll
DRAWN	John F. Schneller Jr.
CHECKED	T.L.K. / P.E.C.

EXAMINED	Thomas J. Samagala	March 5, 2008
PASSED	Ralph E. Anderson	