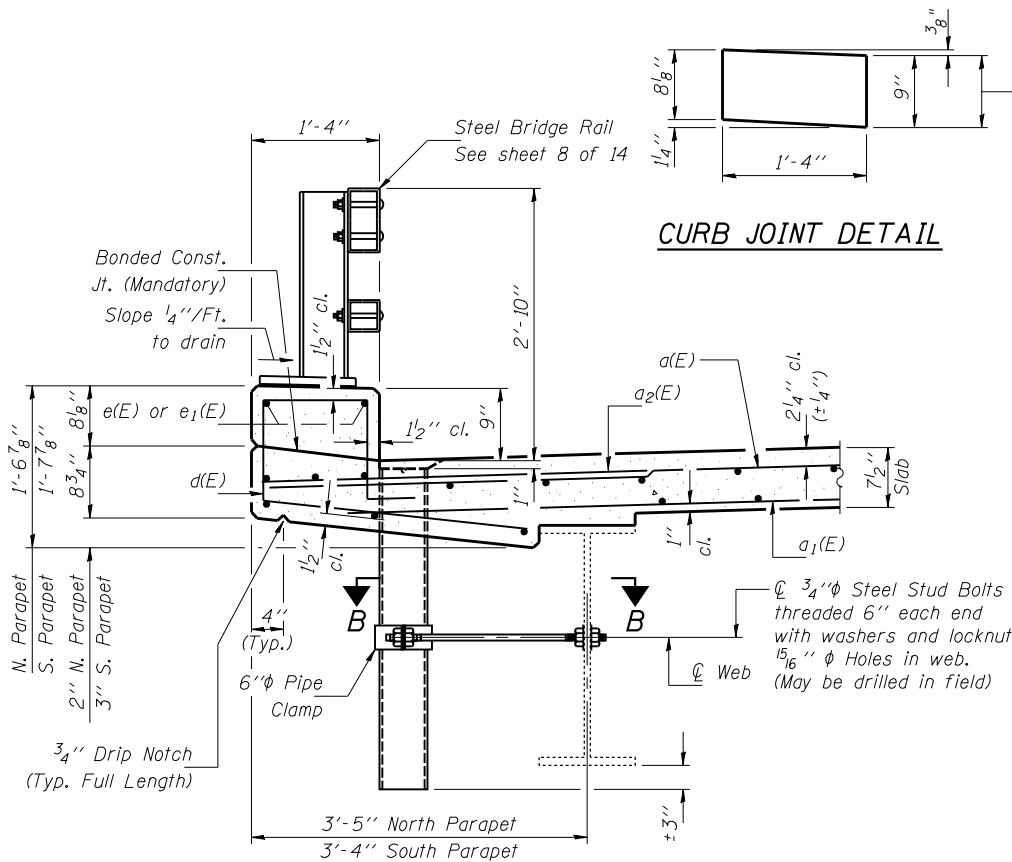


MIN. BAR LAP
#5 bars = 1'-8"

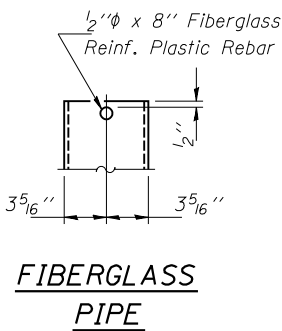
INSIDE ELEVATION OF PARAPET
(Looking North)



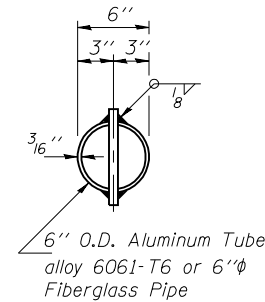
SECTION AT CURB

CURB JOINT DETAIL

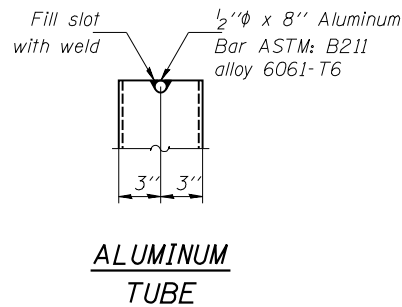
Construction Joints at Piers and locations as shown. $\frac{1}{8}$ " Aluminum sheet ASTM B 209 alloy 3003-H14. Cost included with Concrete Superstructure



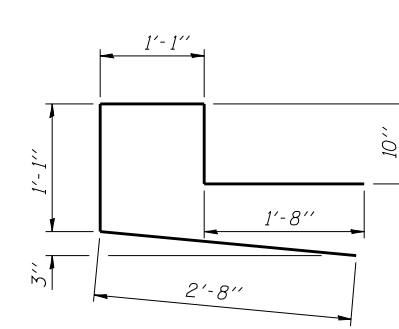
FIBERGLASS PIPE



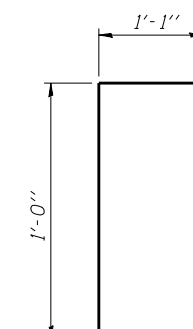
TOP PLAN
(Showing Aluminum Tube)



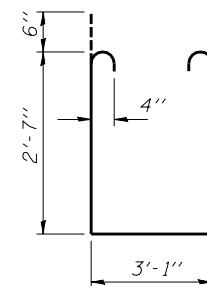
ALUMINUM TUBE



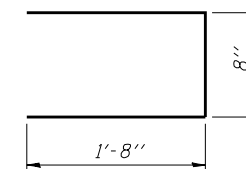
BAR d(E)



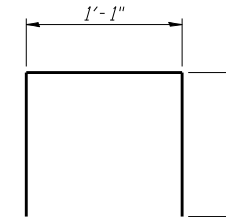
BAR d1(E)



BAR s1(E)



BAR u(E)



BAR u1(E)

SUPERSTRUCTURE BILL OF MATERIAL

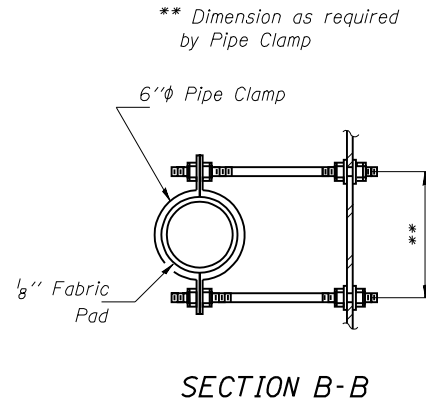
Bar	No.	Size	Length	Shape
a(E)	258	#5	31'-5"	—
a1(E)	181	#5	29'-9"	—
a2(E)	258	#6	6'-0"	—
a3(E)	4	#5	31'-8"	—
a4(E)	24	#5	1'-6"	—
b(E)	216	#5	26'-10"	—
b1(E)	66	#6	29'-9"	—
b2(E)	182	#5	23'-4"	—
d(E)	326	#5	7'-4"	┌
d1(E)	4	#5	3'-1"	└
e(E)	24	#5	21'-6"	—
e1(E)	16	#5	6'-9"	—
m(E)	20	#6	8'-6"	—
m1(E)	10	#6	31'-9"	—
m2(E)	4	#6	3'-1"	—
m3(E)	8	#6	6'-0"	—
s1(E)	64	#4	9'-3"	┌
u(E)	64	#5	4'-0"	└
u1(E)	100	#4	3'-1"	└
Reinforcement Bars, Epoxy Coated			Lbs.	34830
Concrete Superstructure			Cu. Yd.	152.5

Bars indicated thus 3 x 2-#5 etc. indicates 3 lines of bars with 2 lengths per line.

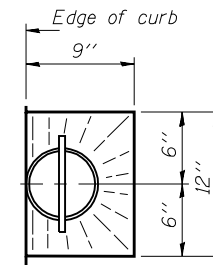
Notes:
Fiberglass pipe shall conform to ASTM D 2996, with short-time rupture strength hoop tensile stress of 30,000 p.s.i. minimum.
The exterior surfaces of the floor drains shall be painted with the finish coat as specified in the Special Provision for Cleaning and Painting Existing Steel Structures. The exterior surfaces shall be cleaned according to Society of Protective Coatings Spec. SSPC-1 prior to painting.

DESIGNED Tom L. Kurtenbach
CHECKED Philip E. Coppernoll
DRAWN John F. Schneller Jr.
CHECKED T.L.K. / P.E.C.

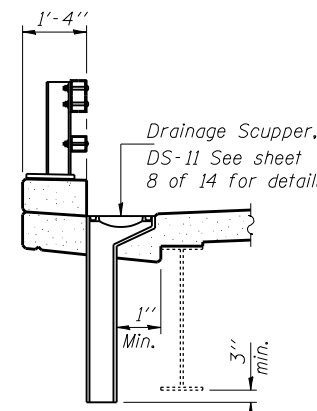
EXAMINED Thomas J. Samagala
PASSED Ralph E. Anderson
March 5, 2008
ENGINEER OF BRIDGE DESIGN
ENGINEER OF BRIDGES AND STRUCTURES



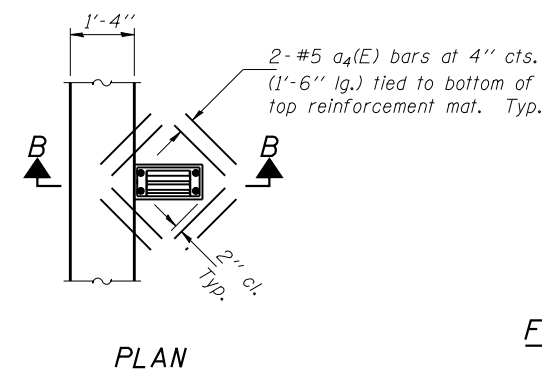
SECTION B-B



TOP PLAN



SECTION B-B



PLAN

SUPERSTRUCTURE DETAILS
F.A.I. ROUTE 55 - SEC. (84-2B-1)I-1
SANGAMON COUNTY
STATION 36+16.64
STRUCTURE NO. 084-0025