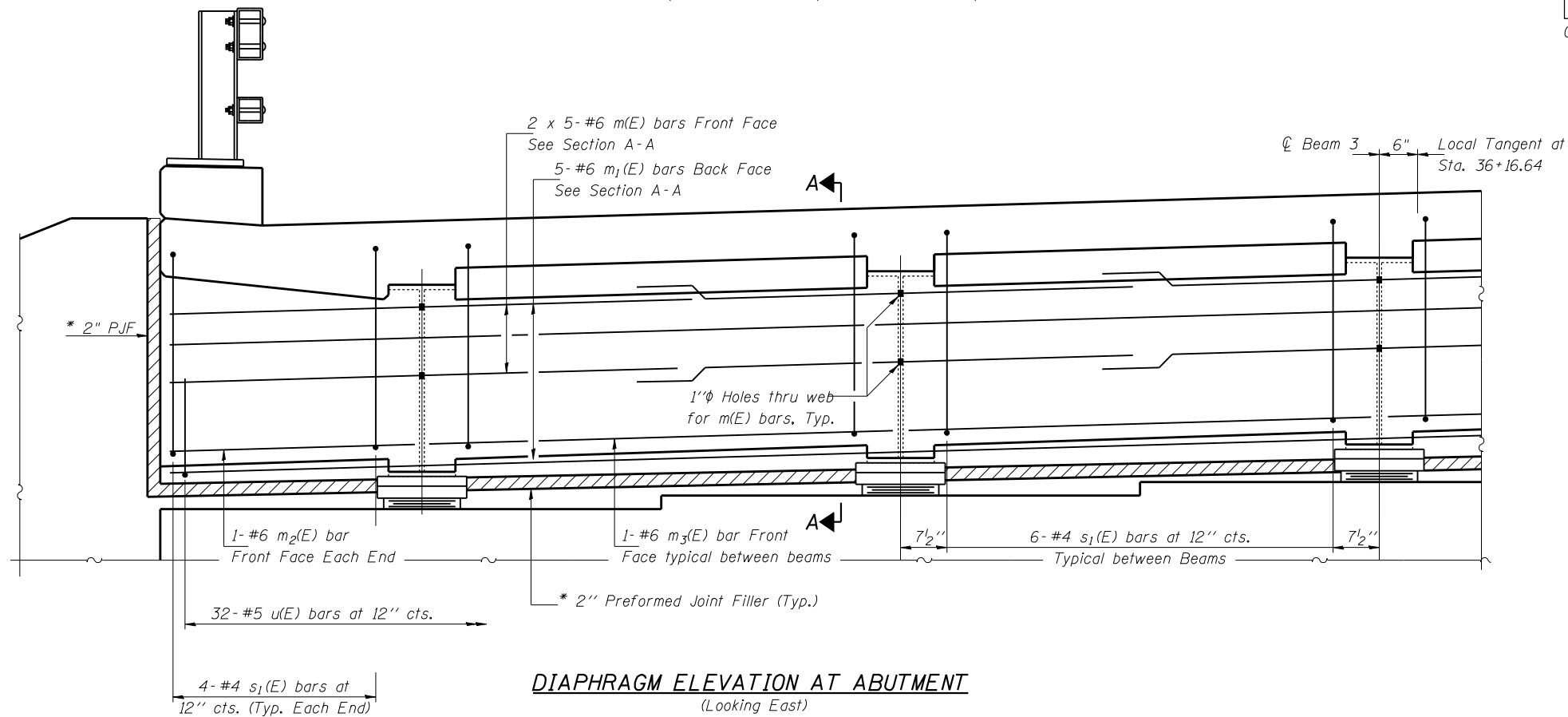


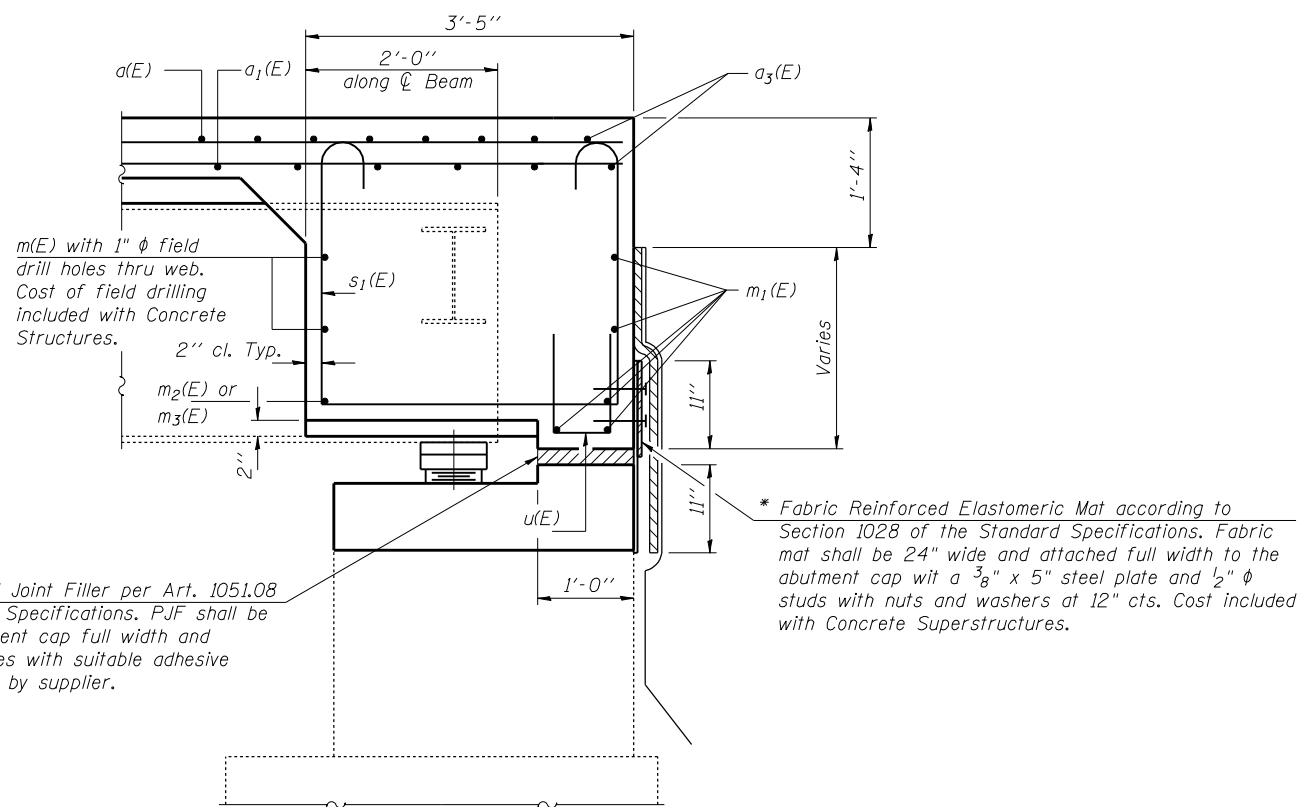
STATE OF ILLINOIS
DEPARTMENT OF TRANSPORTATION

ROUTE NO.	SECTION	COUNTY	TOTAL SHEETS	SHEET NO.	SHEET NO.
F.A.I. 55	(84-2B-1)I-1	SANGAMON	31	16	14 SHEETS
FED. ROAD DIST. NO. 7	ILLINOIS	FED. AID PROJECT			

Contract #72349



DIAPHRAGM ELEVATION AT ABUTMENT
(Looking East)



SECTION A-A

* Cost included with Concrete Superstructure.
(Dimensions are at Rt. L's except as noted)

MIN. BAR LAPS
#6 bars = 2'-9"

Notes:
Reinforcement bars in diaphragm are billed with superstructure on sheet 6 of 14.
For details of bars $s_1(E)$ and $u(E)$ see sheet 6 of 14.
The $s_1(E)$ bars shall be placed parallel to the beams.
Spacing for these bars shall be at right angles to the beam.
Concrete in diaphragm is included with Concrete Superstructure on sheet 6 of 14.
Bars indicated thus 2 x 5-#6 etc. indicates 2 lines of bars 5 lengths per line.

* 2" Preformed Joint Filler per Art. 1051.08 of the Standard Specifications. P.J.F. shall be bonded to abutment cap full width and vertically at edges with suitable adhesive as recommended by supplier.

* Fabric Reinforced Elastomeric Mat according to Section 1028 of the Standard Specifications. Fabric mat shall be 24" wide and attached full width to the abutment cap with a 3/8" x 5" steel plate and 1/2" φ studs with nuts and washers at 12" cts. Cost included with Concrete Superstructures.

DESIGNED Tom L. Kurtenbach
CHECKED Philip E. Coppernoll
DRAWN John F. Schneller Jr.
CHECKED T.L.K. / P.E.C.

March 5, 2008
EXAMINED Thomas J. Domagalaki
PASSED Ralph E. Anderson
ENGINEER OF BRIDGE DESIGN
ENGINEER OF BRIDGES AND STRUCTURES

DIAPHRAGM DETAILS
F.A.I. ROUTE 55 - SEC. (84-2B-1)I-1
SANGAMON COUNTY
STATION 36+16.64
STRUCTURE NO. 084-0025