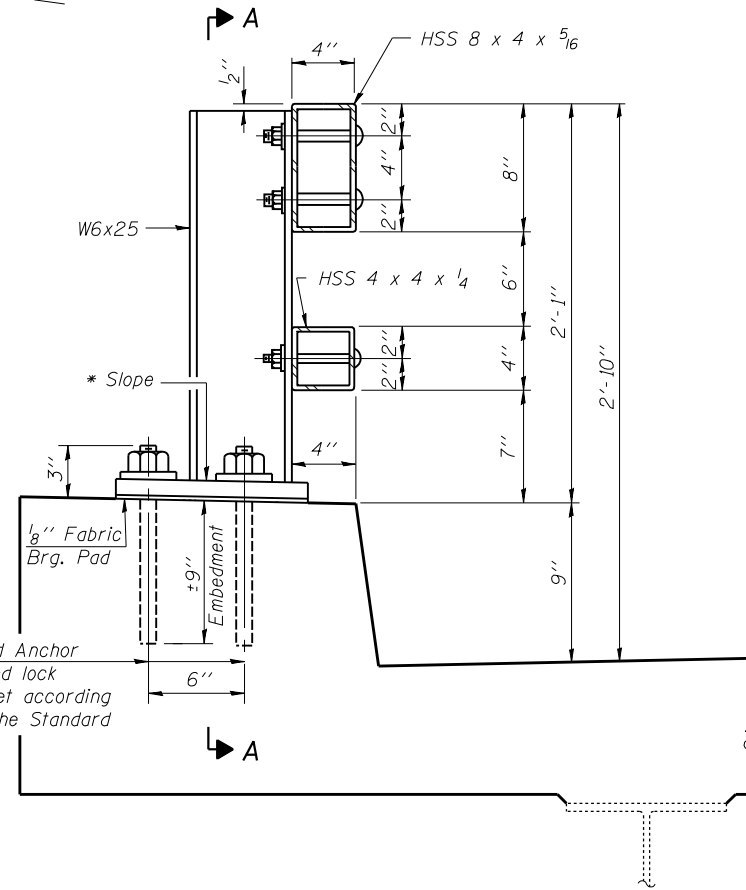


STATE OF ILLINOIS
DEPARTMENT OF TRANSPORTATION

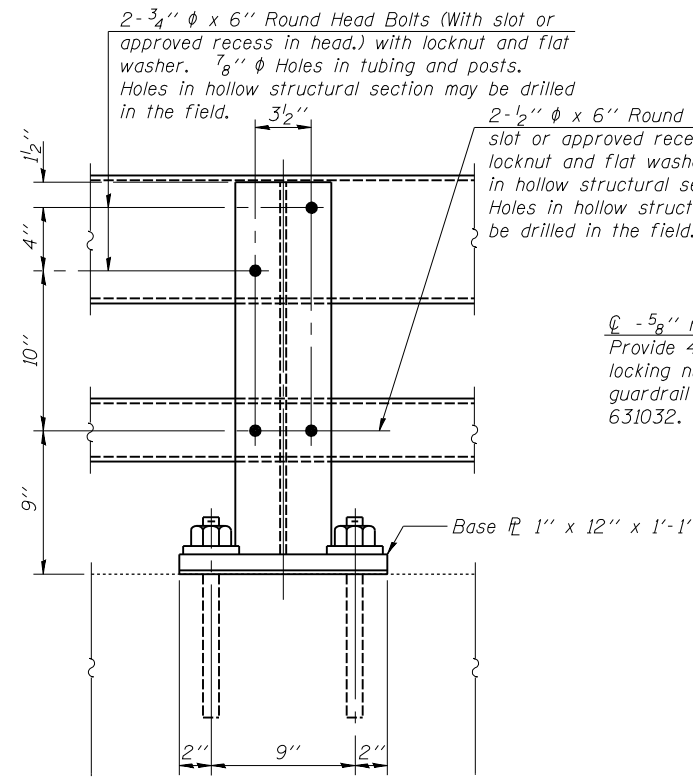
ROUTE NO.	SECTION	COUNTY	TOTAL SHEETS	SHEET NO.	SHEET NO. 9
F.A.I. 55	(84-2B-1)1-1	SANGAMON	31	18	14 SHEETS
FED. ROAD DIST. NO. 7	ILLINOIS	FED. AID PROJECT-			

Contract #72349

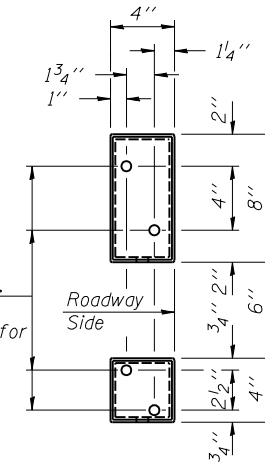
* Cut bottom end of post to curb slope.



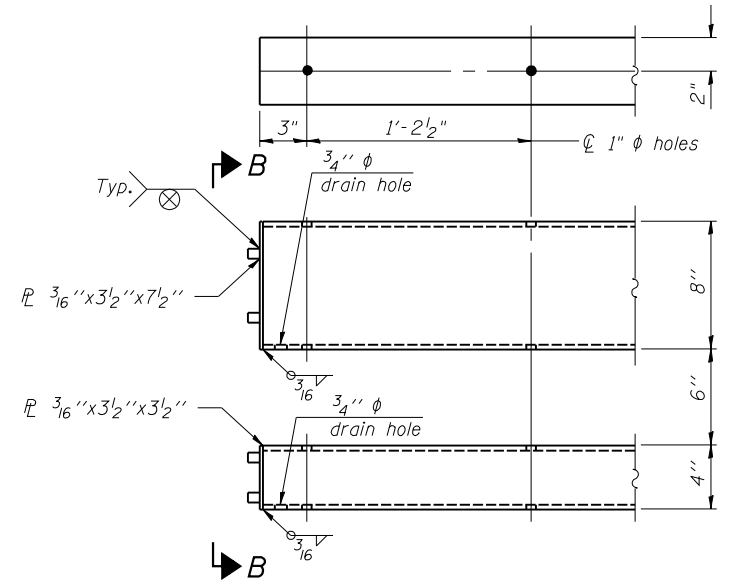
SECTION AT RAIL POST



SECTION A-A



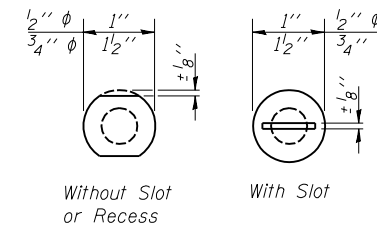
VIEW B-B



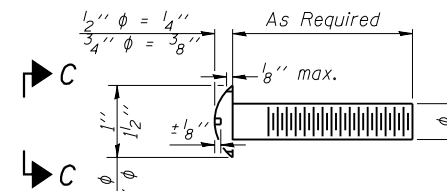
END OF RAIL DETAILS

Notes:

- All field drilled holes shall be coated with an approved zinc rich paint before erection.
- Posts shall not be located closer than 1'-3" to an existing bridge expansion joint or end of bridge.
- Steel Bridge Rail expansion joint shall be provided between any two (2) posts which span a bridge expansion joint. Bolts located at expansion joint shall be provided with locknuts and shall be tightened only to a point that will allow railing movement.
- Provide one 1/8" and two 1/16" steel shims for 25% of the posts. Shims shall be similar to base plates in size and holes.
- All steel rail elements shall be galvanized according to Article 509.05 of the Standard Specifications.



VIEW C-C



DETAIL OF 1/2" ϕ & 3/4" ϕ ROUND HEAD BOLTS

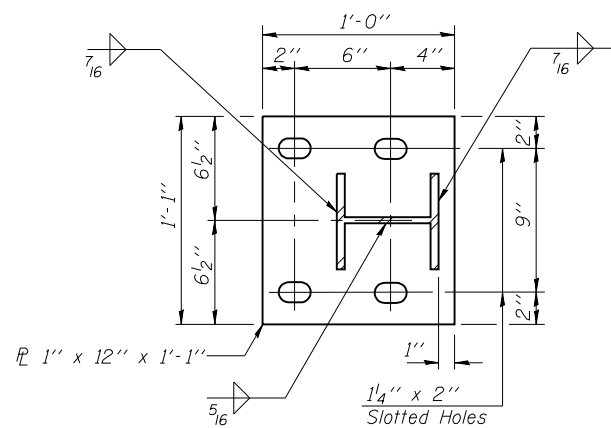
BILL OF MATERIAL

Item	Unit	Quantity
Steel Railing, Type 2399	Foot	301

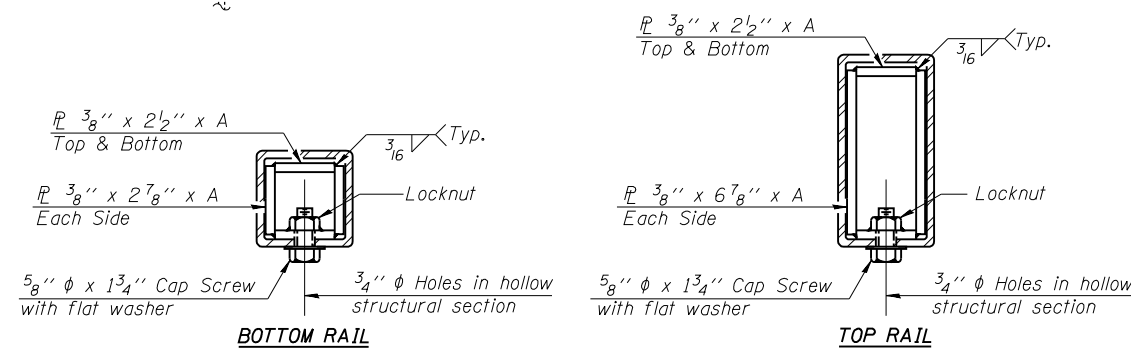
SPLICE DIMENSIONS

T	D	A	B	C	E
$\leq 4"$	2 1/2"	1'-8"	2"	4"	2 1/2"
$> 4" \leq 6 1/2"$	3 3/4"	2'-0"	2 1/2"	5 1/2"	3 1/2"
$> 6 1/2" \leq 9"$	5"	2'-4"	3 1/2"	6 1/2"	9"
$> 9" \leq 13"$	7"	2'-10"	4 1/2"	8 1/2"	11"
Rail Splice	4"	1'-8"	2"	4"	—

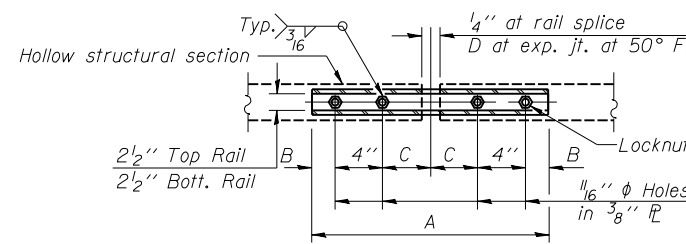
T = Total movement at expansion joint as shown on the design plans.



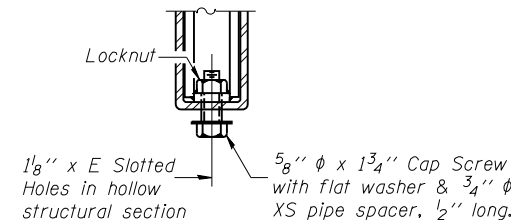
BASE PLATE DETAIL



SECTIONS AT RAIL SPLICE



PLAN-BOTT. SPLICE R TYPICAL



RAIL SPLICE CONNECTION AT EXPANSION JT.

DESIGNED Tom L. Kurtenbach
CHECKED Philip E. Coppernoll
DRAWN John F. Schneller Jr.
CHECKED T.L.K. / P.E.C.

March 5, 2008
EXAMINED Thomas J. Samagala
PASSED Ralph E. Anderson
ENGINEER OF BRIDGE DESIGN
ENGINEER OF BRIDGES AND STRUCTURES

STEEL RAILING, TYPE 2399
F.A.I. ROUTE 55 - SEC. (84-2B-1)1-1
SANGAMON COUNTY
STATION 36+16.64
STRUCTURE NO. 084-0025