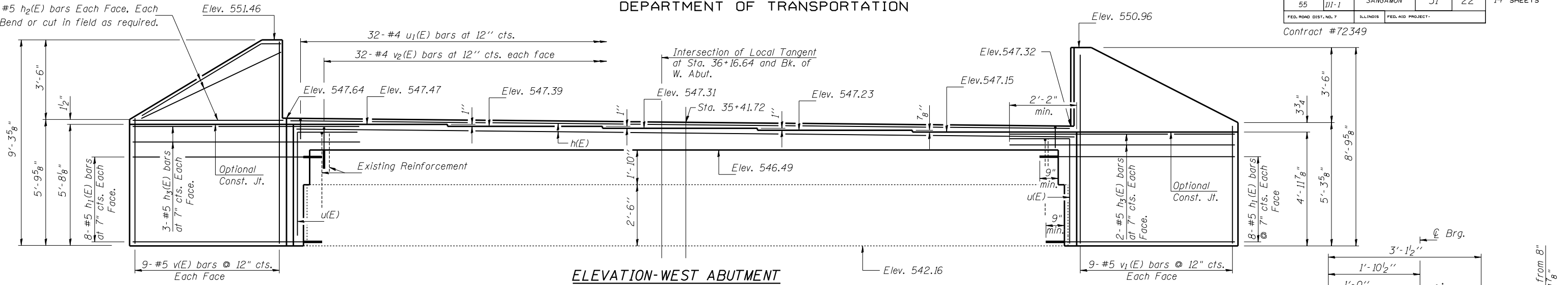


STATE OF ILLINOIS
DEPARTMENT OF TRANSPORTATION

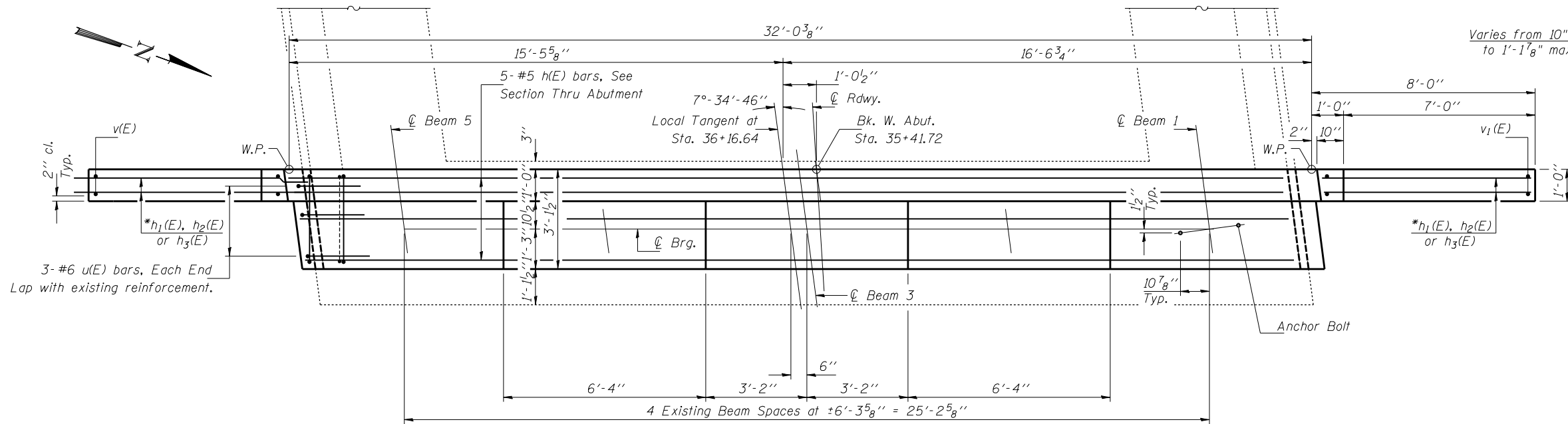
ROUTE NO.	SECTION	COUNTY	TOTAL SHEETS	SHEET NO.	SHEET NO. 13 14 SHEETS
F.A.I. 55	(84-2B-1)1-1	SANGAMON	31	22	
FED. ROAD DIST. NO. 7	ILLINOIS	FED. AID PROJECT-			

Contract #72349

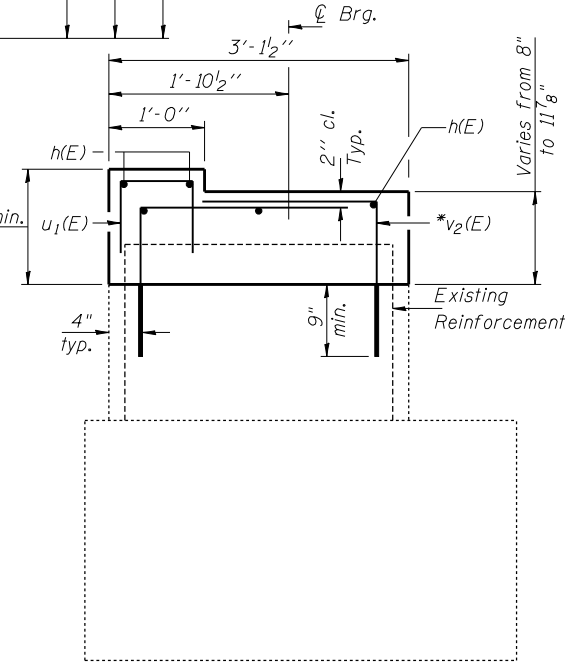
Fan 6-#5 $h_2(E)$ bars Each Face, Each Wing. Bend or cut in field as required.



ELEVATION-WEST ABUTMENT



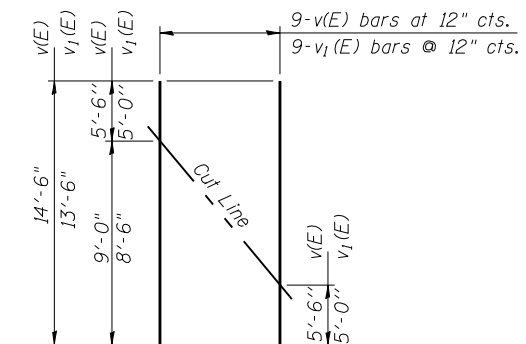
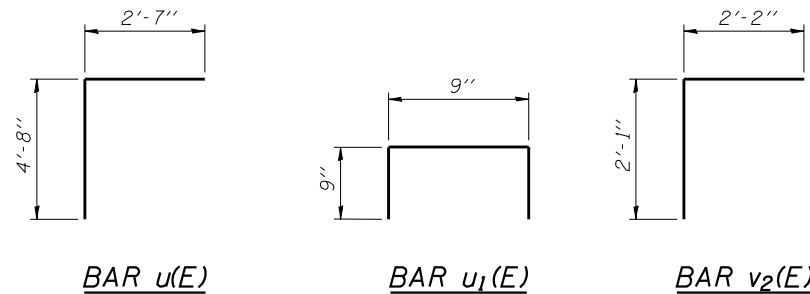
PLAN-WEST ABUTMENT
(Looking West)



SECTION THRU ABUTMENT

* Epoxy grout $h_1(E)$ and $v_2(E)$ bars in 9" min. drilled holes according to Section 584 of the Standard Specifications.

Notes:
Pour steps monolithically with cap.
Space drilled holes in cap and footing to miss existing reinforcement.



FIELD CUTTING DIAGRAM
Order $v(E)$ & $v_1(E)$ bars full length. Cut to fit as shown and use remainder of bars in other face.

BILL OF MATERIAL

Bar	No.	Size	Length	Shape
$h(E)$	5	#5	31'-9"	—
$h_1(E)$	32	#5	9'-6"	—
$h_2(E)$	24	#5	8'-5"	—
$h_3(E)$	10	#5	10'-2"	—
$u(E)$	6	#6	7'-3"	└
$u_1(E)$	32	#4	2'-3"	└
$v(E)$	9	#5	14'-6"	—
$v_1(E)$	9	#5	13'-6"	—
$v_2(E)$	64	#4	4'-3"	└
Concrete Structures			Cu. Yd.	7.6
Reinforcement Bars, Epoxy Coated			Pound	1360
Structure Excavation			Cu. Yd.	123.8

DESIGNED Tom L. Kurtenbach
CHECKED Philip E. Coppernoll
DRAWN John F. Schneller Jr.
CHECKED T.L.K. / P.E.C.

EXAMINED Thomas J. Demagala
PASSED Ralph E. Anderson
March 5, 2008
ENGINEER OF BRIDGE DESIGN
ENGINEER OF BRIDGES AND STRUCTURES

WEST ABUTMENT
F.A.I. ROUTE 55 - SEC. (84-2B-1)1-1
SANGAMON COUNTY
STATION 36+16.64
STRUCTURE NO. 084-0025