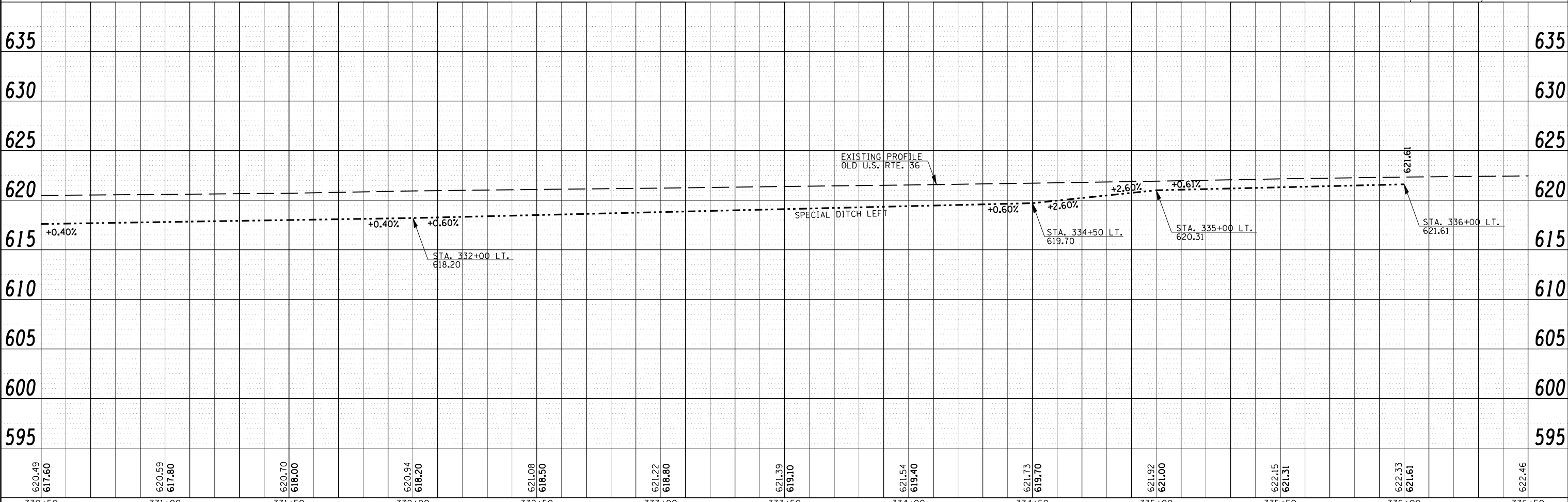
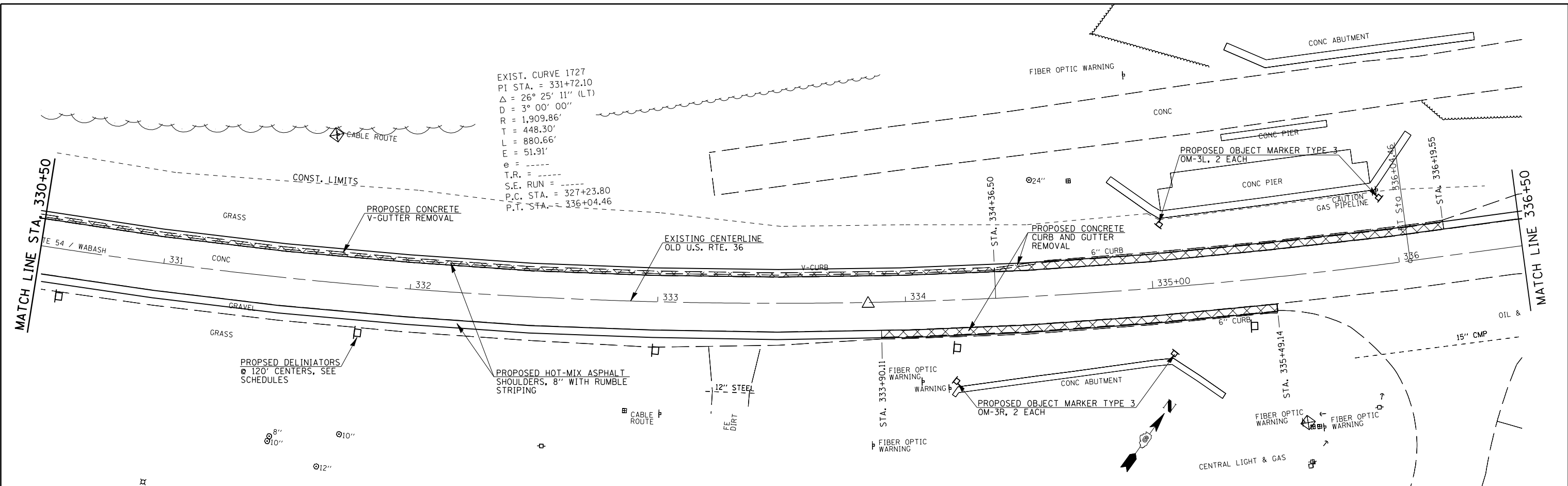


PLAN	SURVEYED	BY	DATE
NOTE BOOK	PLOTTED		
NO.	CHECKED		
	AT		
	FILE NAME		

PROFILE	SURVEYED	BY	DATE
NOTE BOOK	PLOTTED		
NO.	CHECKED		
	AT		
	FILE NAME		

EXIST. CURVE 1727
 PI STA. = 331+72.10
 $\Delta = 26^\circ 25' 11''$ (LT)
 $D = 3^\circ 00' 00''$
 $R = 1,909.86'$
 $T = 448.30'$
 $L = 880.66'$
 $E = 51.91'$
 $e =$
 $T.R. =$
 $S.E. RUN =$
 $P.C. STA. = 327+23.80$
 $P.T. STA. = 336+04.46$



FILE NAME =	USER NAME = laughlinr1	DESIGNED - RTS	REVISED -	STATE OF ILLINOIS DEPARTMENT OF TRANSPORTATION	PLAN LAYOUT SHEET NO. 6	F.A.S. RTE.	SECTION	COUNTY	TOTAL SHEETS	SHEET NO.
ct:\projects\1610607\shp\p1154.dgn		DRAWN - RTS	REVISED -			1613	*	SANGAMON	20	13
PLOT SCALE = 40.0000' / IN.		CHECKED -	REVISED -			* - D-6 RUMBLE STRIPS 2008-01		CONTRACT NO. 72B29		
PLOT DATE = Jan-09-2008 02:31:55PM		DATE - DEC. 21, 2007	REVISED -			SCALE: 1" = 20'	SHEET NO. 6 OF 7 SHEETS	STA. 330+50 TO STA. 336+50	FED. ROAD DIST. NO.	ILLINOIS FED. AID PROJECT