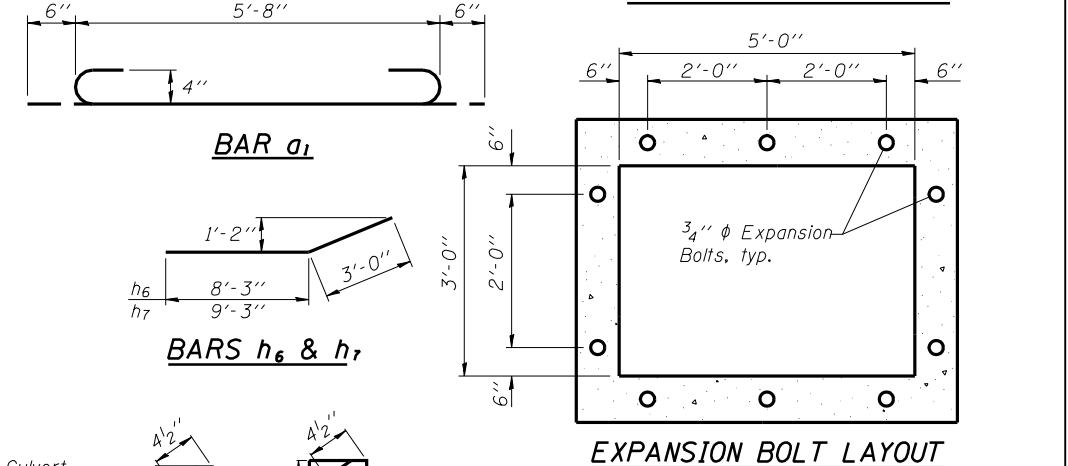
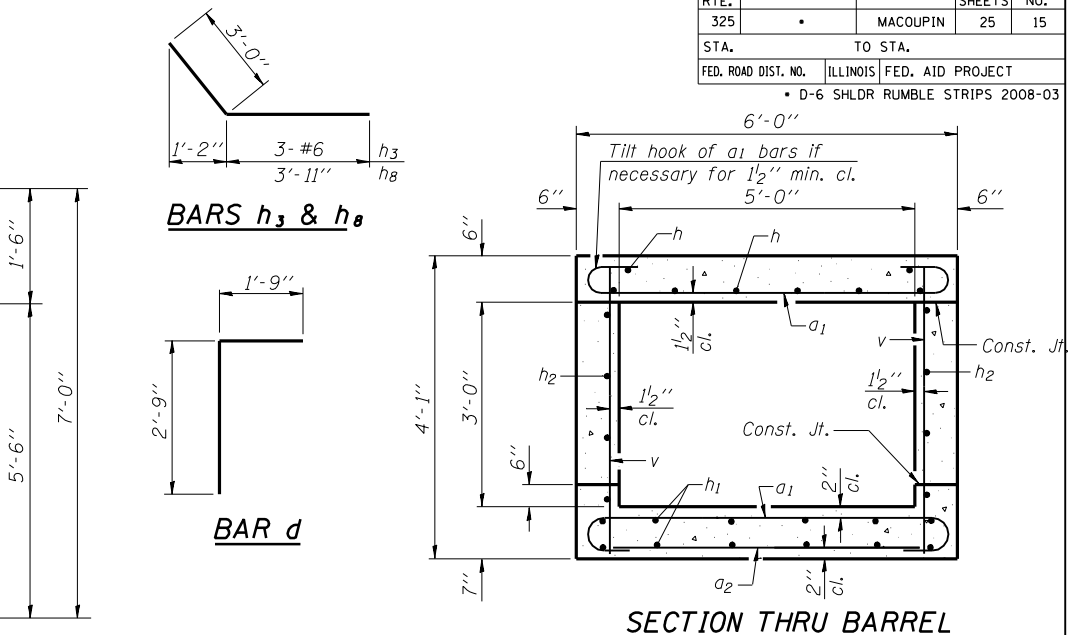
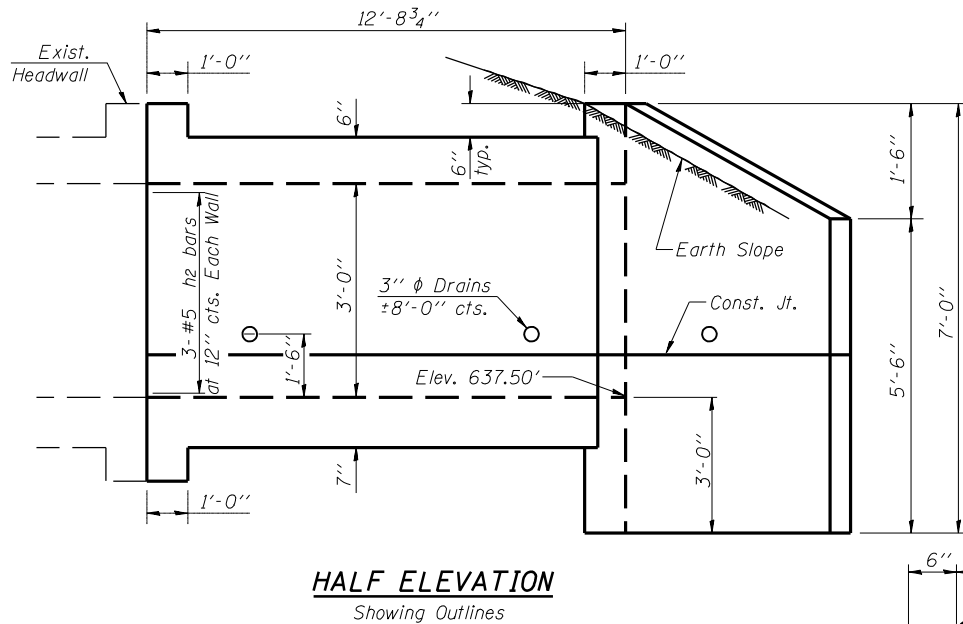
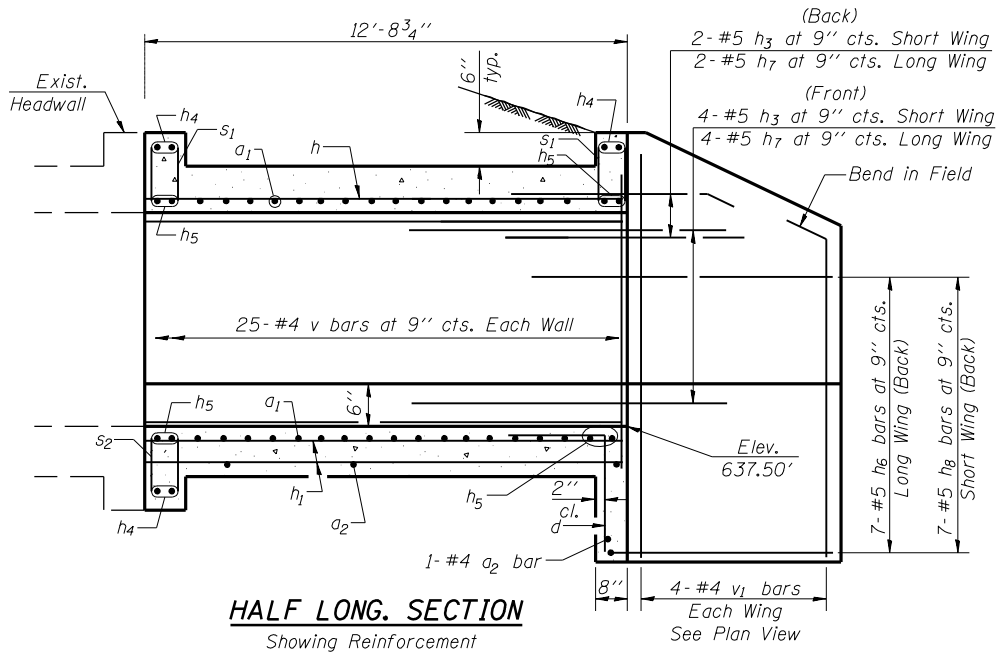
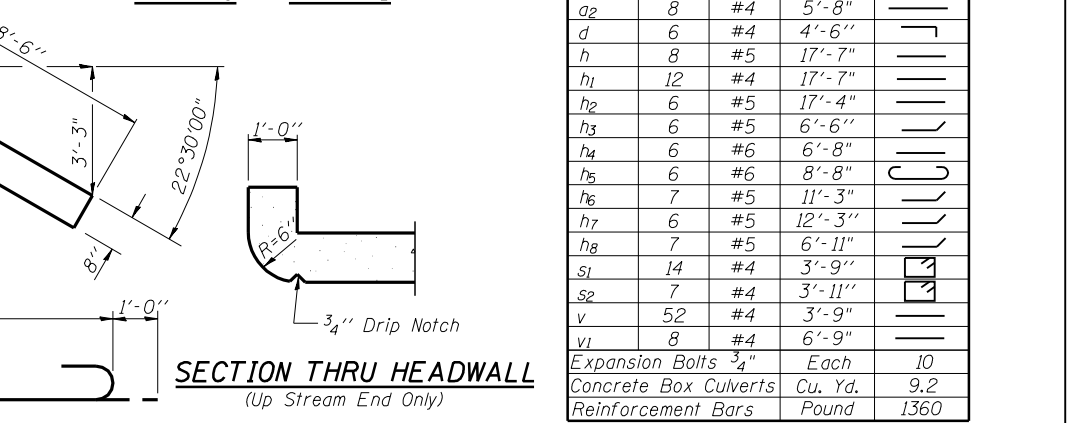


F.A.P. RTE.	SECTION	COUNTY	TOTAL SHEETS	SHEET NO.
325		MACOUPIN	25	15
STA.		TO STA.		
FED. ROAD DIST. NO.		ILLINOIS FED. AID PROJECT		
D-6 SHLDR RUMBLE STRIPS 2008-03				



BILL OF MATERIAL

Bar	No.	Size	Length	Shape
a1	68	#4	6'-8"	C
a2	8	#4	5'-8"	—
d	6	#4	4'-6"	—
h	8	#5	17'-7"	—
h1	12	#4	17'-7"	—
h2	6	#5	17'-4"	—
h3	6	#5	6'-6"	—
h4	6	#6	6'-8"	—
h5	6	#6	8'-8"	C
h6	7	#5	11'-3"	—
h7	6	#5	12'-3"	—
h8	7	#5	6'-11"	—
s1	14	#4	3'-9"	—
s2	7	#4	3'-11"	—
v	52	#4	3'-9"	—
v1	8	#4	6'-9"	—
Expansion Bolts	3/4"	Each	10	
Concrete Box Culverts		Cu. Yd.	9.2	
Reinforcement Bars		Pound	1360	



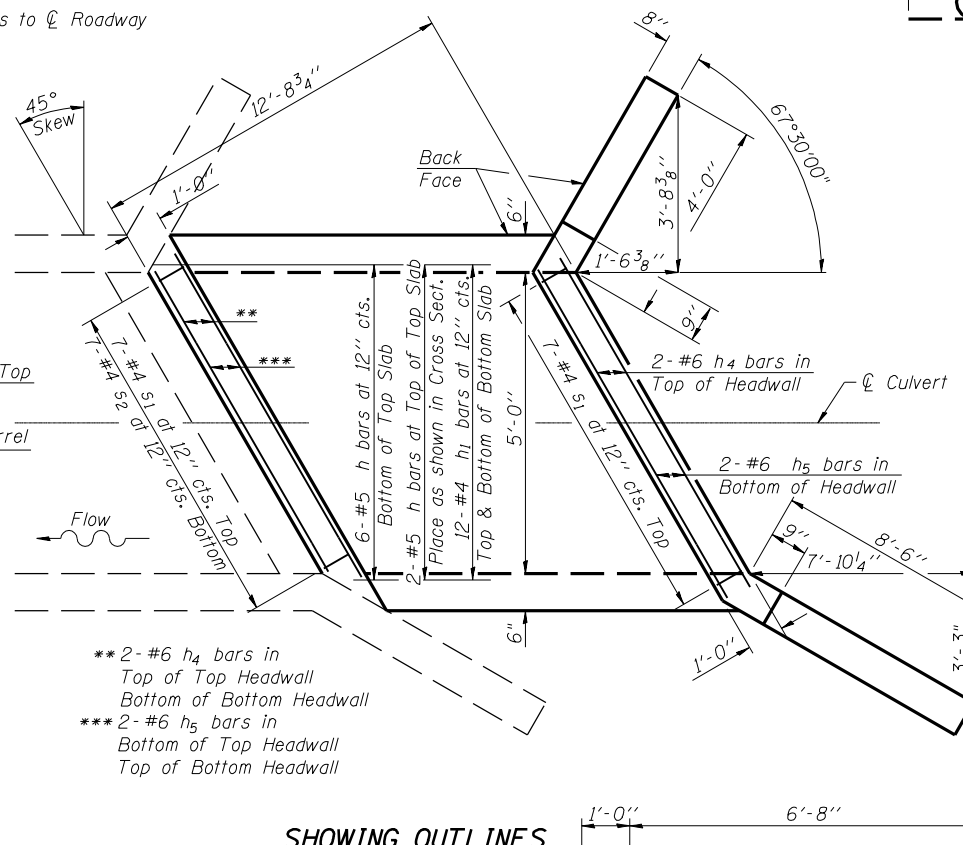
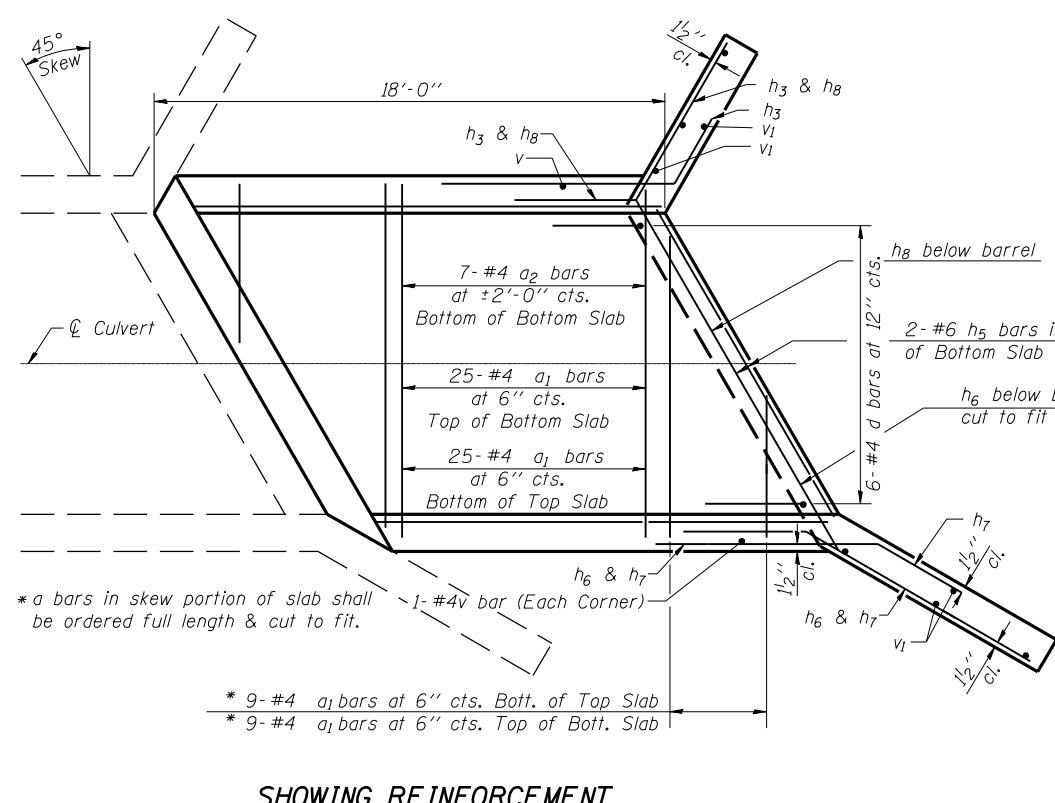
DESIGN STRESSES
 $f_y = 60,000$ psi
 $f'_c = 3,500$ psi

LOADING HS 20-44 & ALT.

REVISIONS	
NAME	DATE

ILLINOIS DEPARTMENT OF TRANSPORTATION
BOX CULVERT EXTENSION DETAILS
 STA 48+09.71, 45° LT FWD
 EXISTING 5' X 3' BOX CULVERT

SCALE: VERT. / HORIZ.
 DATE: / /
 DRAWN BY: / / /
 CHECKED BY: / / /



NOTES

A distance of half the length of the wingwall but not less than six feet of the barrel shall be poured monolithically with the wingwalls.
 Reinforcement Bars shall conform to the requirements of AASHTO M-31, M-42 or M-53, Grade 60.
 Bars indicated thus 12 x 4-#5 etc. indicates 12 lines of bars with 4 lengths per line.
 All construction joints shall be bonded.

PLOT DATE = Jan-18-2008 07:17:54AM
 FILE NAME = c:\projects\48107\48107.dwg
 PLOT SCALE = 1/8" = 1'-0"
 USER NAME = laughlin