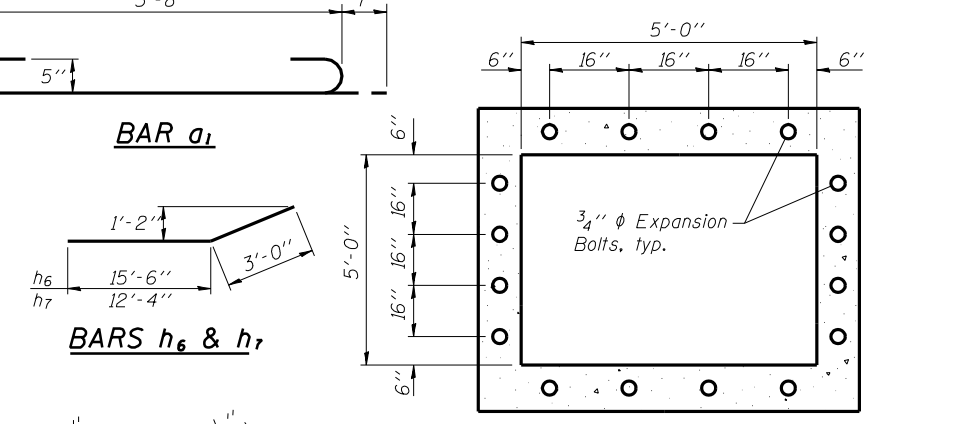
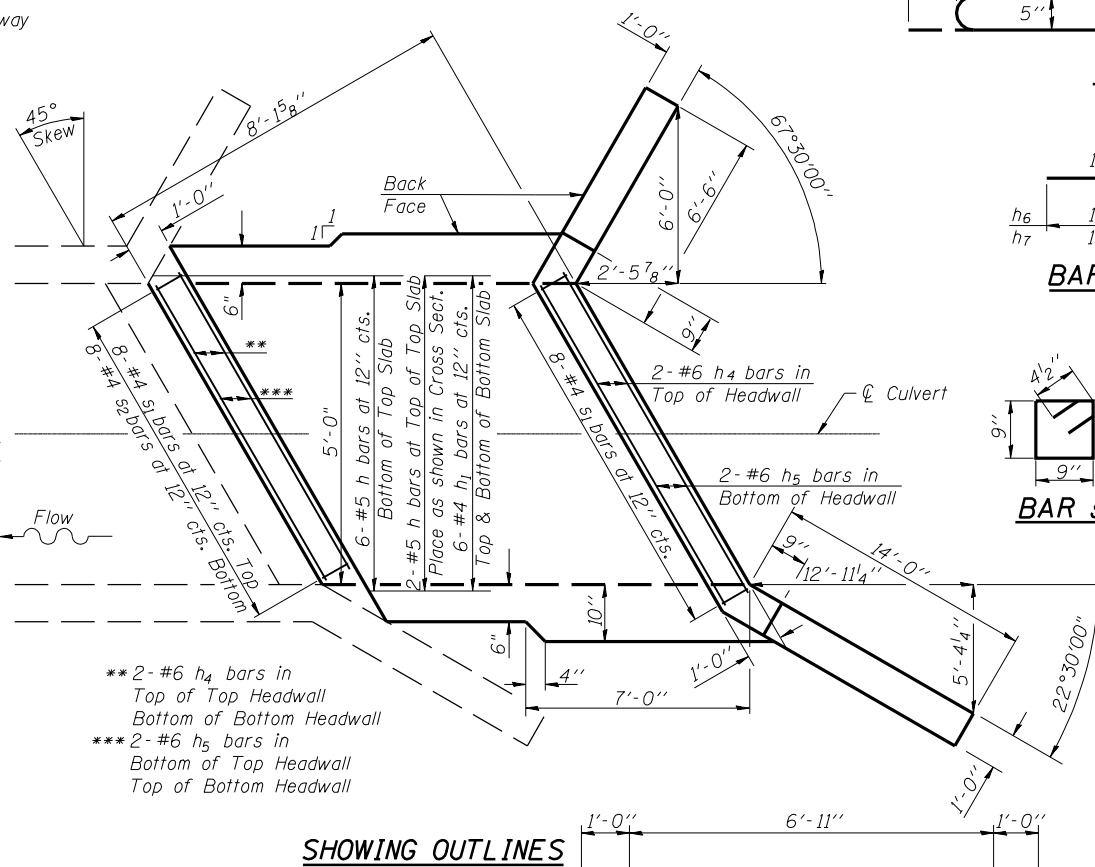
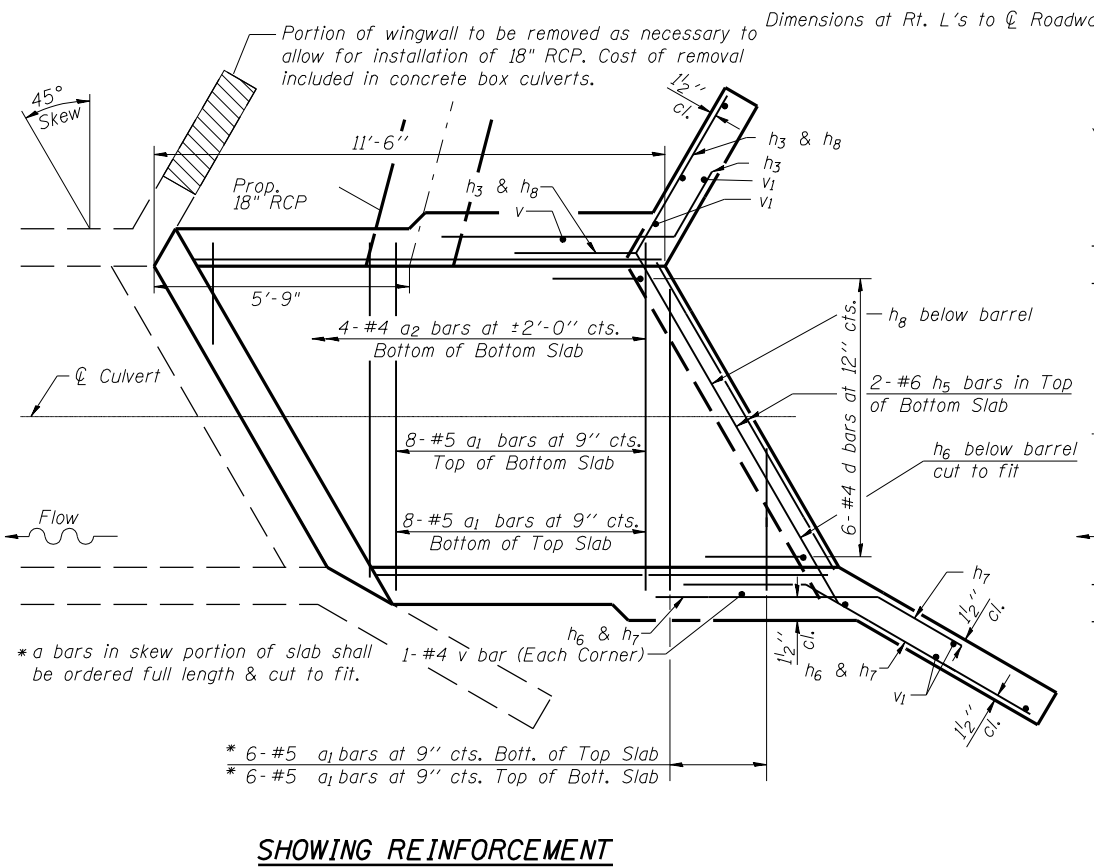
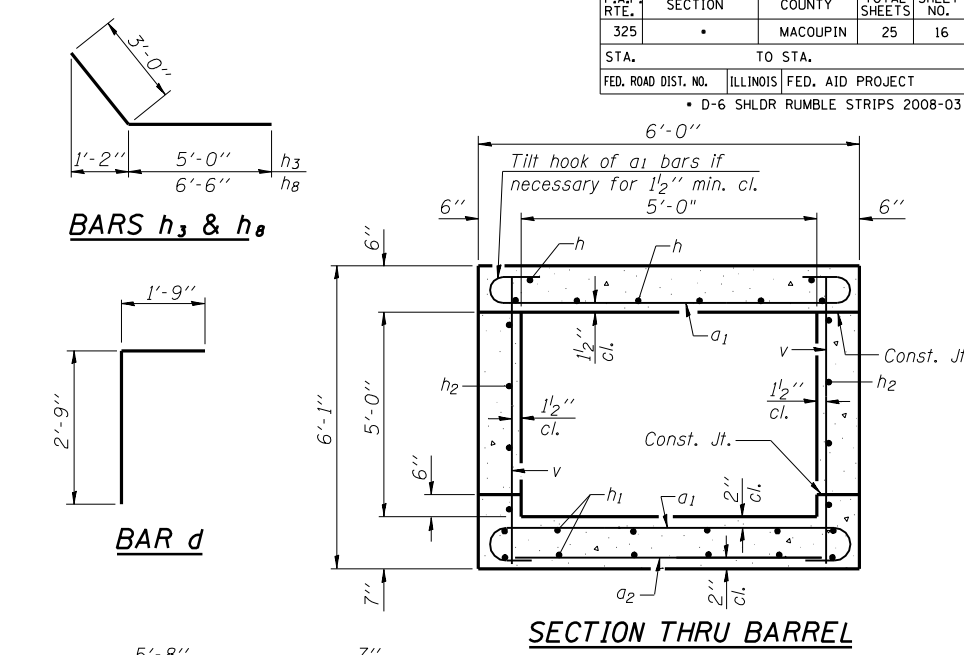
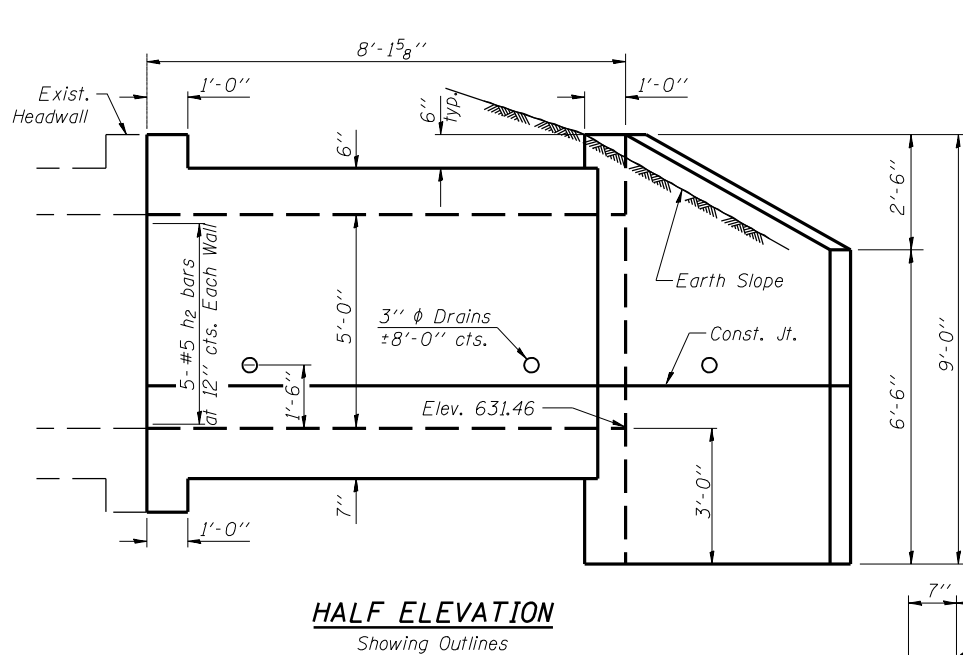
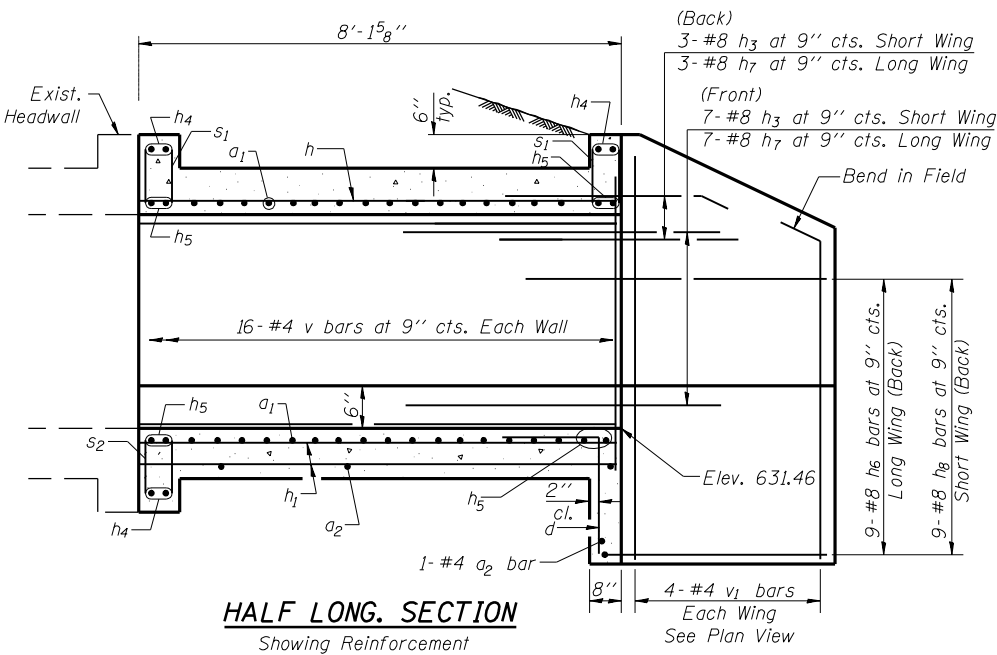


F.A.P. RTE.	SECTION	COUNTY	TOTAL SHEETS	SHEET NO.
325		MACOUPIN	25	16
STA.		TO STA.		
FED. ROAD DIST. NO.		ILLINOIS FED. AID PROJECT		
D-6 SHLDR RUMBLE STRIPS 2008-03				



BILL OF MATERIAL

Bar	No.	Size	Length	Shape
a1	28	#5	6'-10"	U
a2	5	#4	5'-8"	—
d	6	#4	4'-6"	L
h	8	#5	11'-1"	—
h1	12	#4	11'-1"	—
h2	12	#5	10'-10"	—
h3	10	#8	8'-0"	—
h4	6	#6	6'-11"	—
h5	6	#6	8'-11"	U
h6	9	#8	18'-6"	—
h7	10	#8	15'-4"	—
h8	9	#8	9'-6"	—
s1	16	#4	3'-9"	L
s2	8	#4	3'-11"	L
v	36	#4	5'-9"	—
v1	8	#4	8'-9"	—
v3	4	#4	4'-0"	—
Expansion Bolts	3/4"	Each	16	
Concrete Box Culverts		Cu. Yd.	12.5	
Reinforcement Bars		Pound	2050	

See next sheet for pipe connection details on north side

PLAN

SHOWING OUTLINES

NOTES

A distance of half the length of the wingwall but not less than six feet of the barrel shall be poured monolithically with the wingwalls.
Reinforcement Bars shall conform to the requirements of AASHTO M-31, M-42 or M-53, Grade 60.
Bars indicated thus 12 x 4-#5 etc. indicates 12 lines of bars with 4 lengths per line.
All construction joints shall be bonded.

BAR h5

DESIGN STRESSES

$f_y = 60,000 \text{ psi}$
 $f'_c = 3,500 \text{ psi}$

LOADING HS 20-44 & ALT.

REVISIONS	
NAME	DATE

ILLINOIS DEPARTMENT OF TRANSPORTATION

BOX CULVERT EXTENSION DETAILS
STA 53+25.82, 45° LT FWD
EXISTING 5' X 5' BOX CULVERT

SCALE: VERT. HORIZ.
DATE: DRAWN BY: CHECKED BY:

PLOT DATE = Jan-18-2008 07:17:55AM
FILE NAME = c:\projects\6818197\shd\detail.dgn
PLOT SCALE = 48.6884 / IN.
USER NAME = laughlin-1