

GENERAL NOTES

1. ANY REFERENCE TO THE STANDARDS THROUGHOUT THE PLANS SHALL BE INTERPRETED TO BE THE LATEST STANDARDS OF THE DEPARTMENT AS INCLUDED IN THE PLANS.
2. NO EXCAVATION ANTICIPATED ON THIS PROJECT WHICH WOULD AFFECT UTILITIES. SHOULD ANY EXCAVATION BE REQUIRED, J.U.L.I.E. SHALL BE NOTIFIED A MINIMUM OF 48 HOURS IN ADVANCE - (800) 892-0123.
3. IN ADDITION TO FIELD SURVEYS AND AERIAL SURVEYS, PLAN DIMENSIONS AND DETAILS RELATIVE TO THE EXISTING FACILITIES HAVE BEEN TAKEN FROM EXISTING PLANS AND ARE SUBJECT TO CONSTRUCTION VARIATIONS. IT SHALL BE THE CONTRACTOR'S RESPONSIBILITY TO VERIFY SUCH DIMENSIONS AND DETAILS IN THE FIELD. SUCH VARIATIONS SHALL NOT BE A CAUSE FOR ADDITIONAL COMPENSATION DUE TO A CHANGE IN THE SCOPE OF THE WORK. HOWEVER, THE CONTRACTOR WILL BE PAID FOR THE QUANTITY ACTUALLY FURNISHED AT THE BID PRICE FOR THE WORK.
4. THE FOLLOWING IS THE ESTIMATED QUANTITY OF STRUCTURAL STEEL REQUIRED:

7,240 POUNDS

IT IS UP TO THE CONTRACTOR TO VERIFY THE QUANTITY. ALL STRUCTURAL STEEL WILL BE PAID FOR AS 'FURNISHING AND ERECTING STRUCTURAL STEEL', LUMP SUM.

DISTRICT SIX	
EXAMINED	January 17 20 08
<i>Roni J. Hoast</i>	
OPERATIONS ENGINEER	
EXAMINED	Jan 18 20 08
<i>W. R. F.</i>	
PROGRAM DEVELOPMENT ENGINEER	
EXAMINED	Jan 28 20 08
<i>W. R. F.</i>	
PROGRAM IMPLEMENTATION ENGINEER	

FILE NAME =	USER NAME = medonsev	DESIGNED -	REVISED -
ct:\projects\672b56\672b56-shr-gennotedgn		DRAWN -	REVISED -
PLOT SCALE = 100.0000' / IN.		CHECKED -	REVISED -
PLOT DATE = Jan-30-2008 @11:53:55PM		DATE -	REVISED -

**STATE OF ILLINOIS
DEPARTMENT OF TRANSPORTATION**

GENERAL NOTES			
SCALE:	SHEET NO.	OF SHEETS	STA. TO STA.

F.A. RTE.	SECTION	COUNTY	TOTAL SHEETS	SHEET NO.
566	(I-BR-1)E-2	SCOTT	5	2
CONTRACT NO. 72B56				
FED. ROAD DIST. NO. ILLINOIS FED. AID PROJECT				

SN 009-0006
100% STATE
SFTY-2A

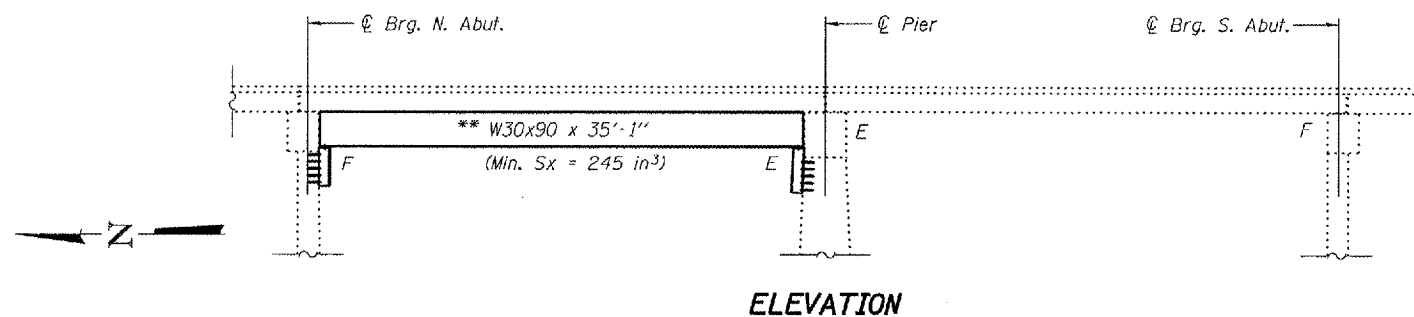
CODE NO.	DESCRIPTION	UNITS	TOTAL	QUANTITY
50500105	FURNISHING AND ERECTING STRUCTURAL STEEL	L SUM	1	1
67100100	MOBILIZATION	L SUM	1	1

STATE OF ILLINOIS
DEPARTMENT OF TRANSPORTATION

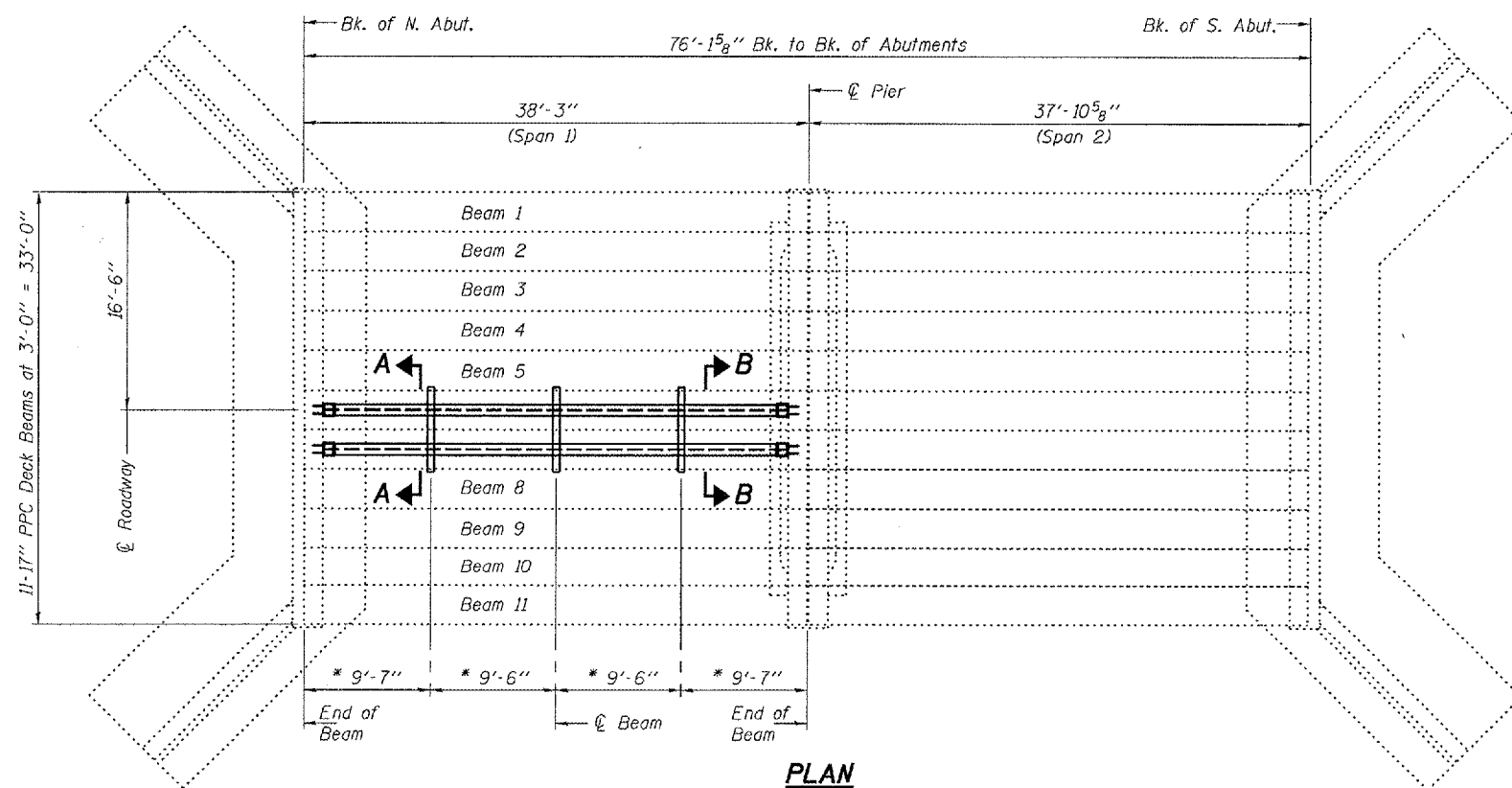
FIGURE NO.	SECTION	COUNTY	SHEETS	SHEET NO.	SHEET NO. 1
FAP 566		SCOTT	5	4	2 SHEETS
FED. ROAD DIST. NO. 7	ILLINOIS	FED. AID PROJECT	Contract Number: 72B56		

** Contractor is to verify beam length prior to ordering material. Other sections meeting the section modulus requirements shown may be allowed subject to approval by the Bureau of Bridges and Structures. Maximum Girder depth = 30". No additional payment will be allowed if the contractor chooses a heavier steel section than the one specified in the plans

* \varnothing Transverse tie \varnothing 's (3 per span). Place additional shims at midpoints between tie \varnothing 's. Securely weld shims to top flange of support beam. Minimum shim size is 6" x flange width.



ELEVATION



PLAN

GENERAL NOTES

All structural steel shall conform to AASHTO Classification M-270 Gr. 36, unless otherwise noted.

Plan dimensions and details relative to existing plans are subject to routine variations. The Contractor shall field verify existing dimensions and details affecting new construction and make necessary approved adjustments prior to construction or ordering of materials. Such variations shall not be cause for additional compensation for a change in scope of the work, however, the Contractor will be paid for the quantity actually furnished based upon the unit price bid for the work.

The contractor is advised that the existing PPC Deck Beams are in a deteriorated condition with reduced load carrying capacity. It is the contractor's responsibility to account for the condition of the beams when developing construction procedures.

See Section 584 of the Standard Specifications for Epoxy Grouting of Threaded Rods; Minimum embedment 9".

The cost of epoxy grouting threaded rods on the pier cap and beams shall be included with Furnishing and Erecting Structural Steel.

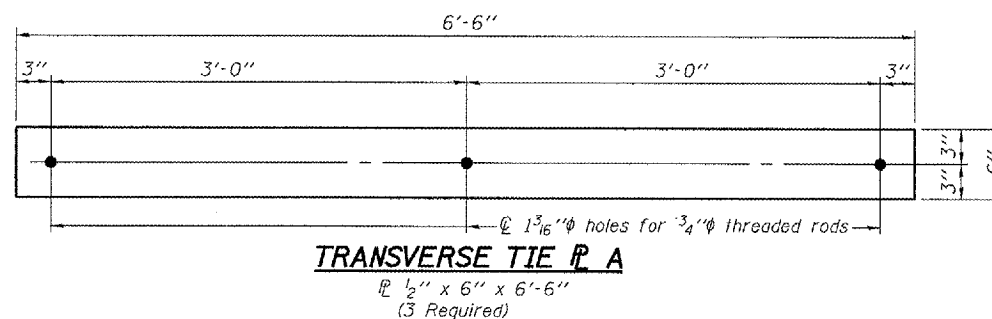
The Contractor has the option of using used steel. See Special Provisions.

If the contractor's procedure for placement of beams involves placement of cranes or other heavy equipment on the bridge, a detailed procedure shall be submitted to the Engineer for approval. The procedure shall include calculations, prepared and sealed by an Illinois Licensed Structural Engineer, verifying that the equipment and procedure used will not overstress the existing beams. To distribute load to multiple beams and protect the existing surface, in all cases a double layer of heavy timbers shall be used at all times under crane tracks or wheels and any outriggers in the down position. If necessary, shims shall be used under the crane mat to ensure uniform contact with the underlying beams.

Estimated quantity for Structural Steel = 7380 lbs.

TOTAL BILL OF MATERIAL

ITEM	UNIT	QUANTITY
Furnishing and Erecting Structural Steel	L.S.	1

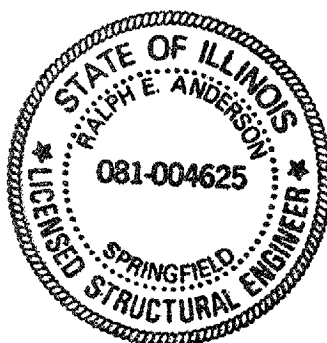


TRANSVERSE TIE R A
 \varnothing 1/2" x 6" x 6'-6"
(3 Required)

DESIGNED: *[Signature]*
CHECKED: *Alvin T. Holloway*
DRAWN: *Steffen*
CHECKED: *AJD ATH*

EXAMINED: *[Signature]*
PASSED: *[Signature]*

FEBRUARY 26, 2008



Expires: November 30, 2008

PLAN AND ELEVATION
FAP 566 OVER
BR. SANDY CREEK
SCOTT COUNTY
SN 086-0012

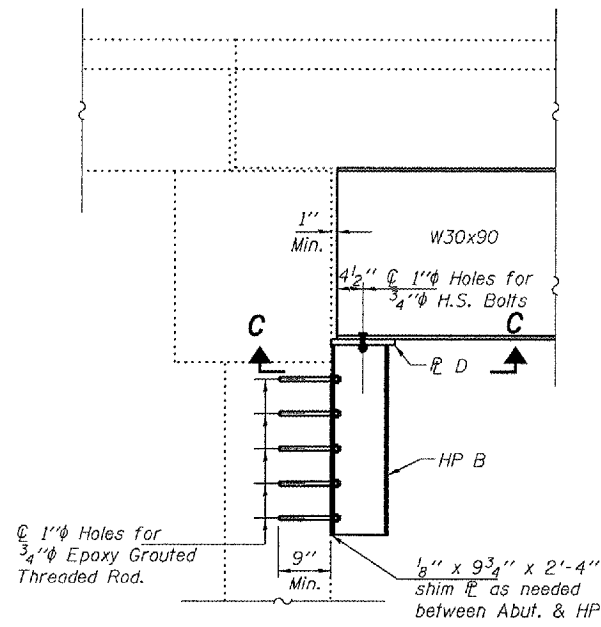
STATE OF ILLINOIS
DEPARTMENT OF TRANSPORTATION

ROUTE NO.	SECTION	COUNTY	LIST SHEETS	SHEET
FAP 566		SCOTT	5	5
FED. ROAD DIST. NO. 7	ALL-INSTE	FED. AID PROJECT		

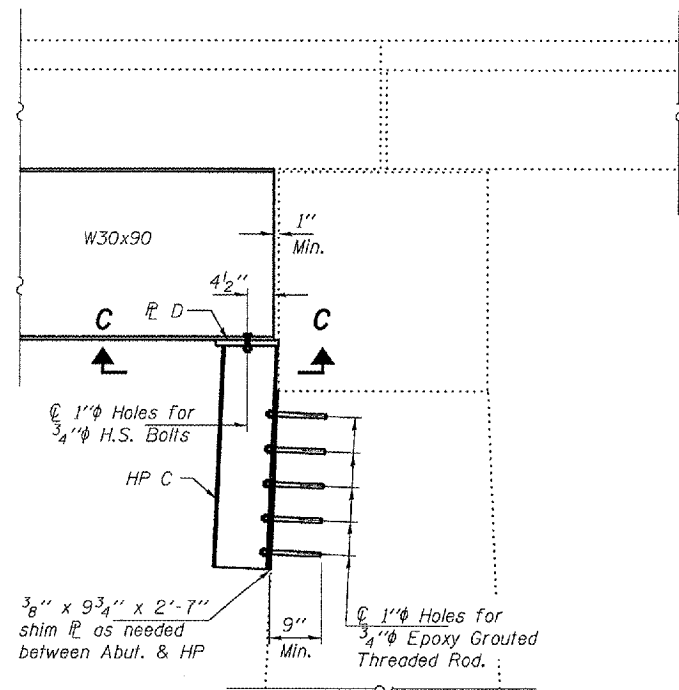
SHEET NO. 2

2 SHEETS

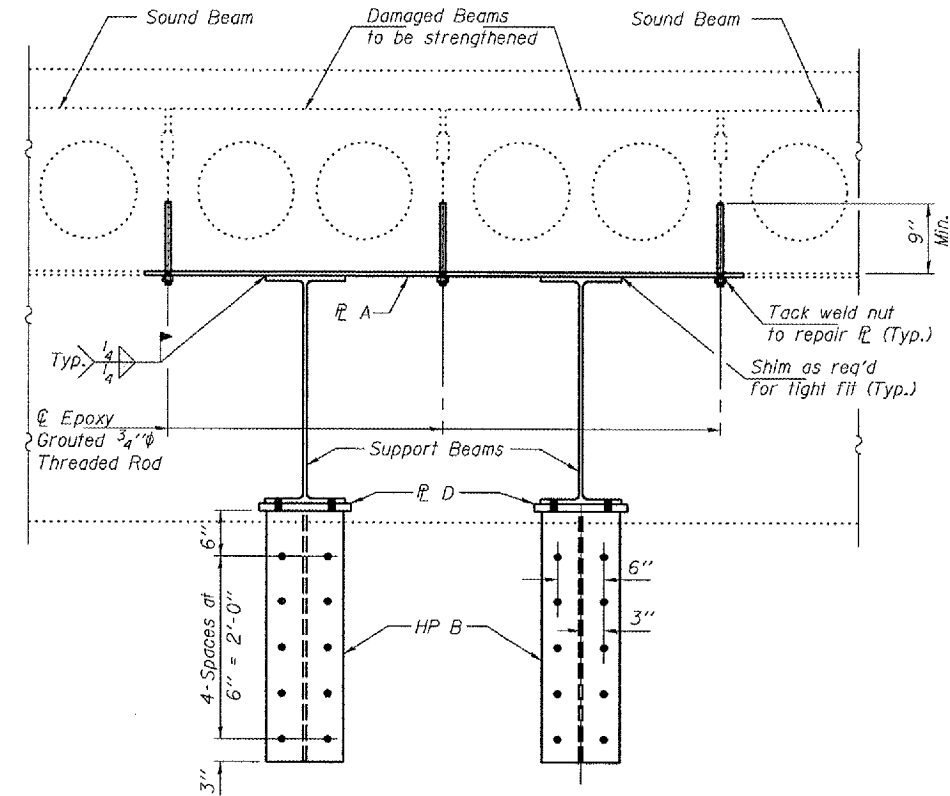
Contract Number: 72B56



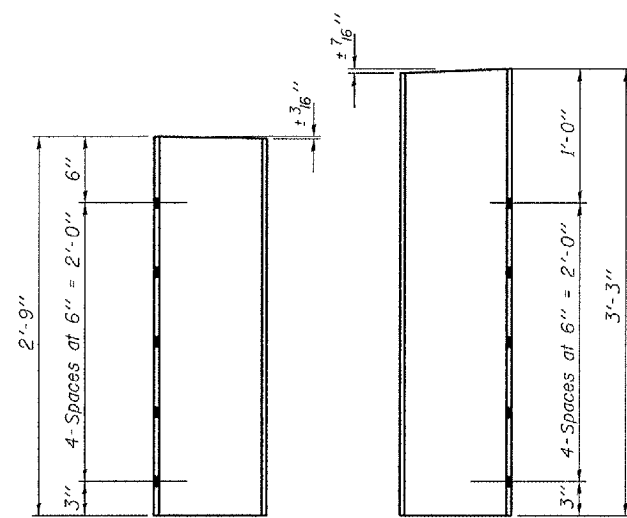
**SECTION THRU
NORTH ABUTMENT**



SECTION THRU PIER

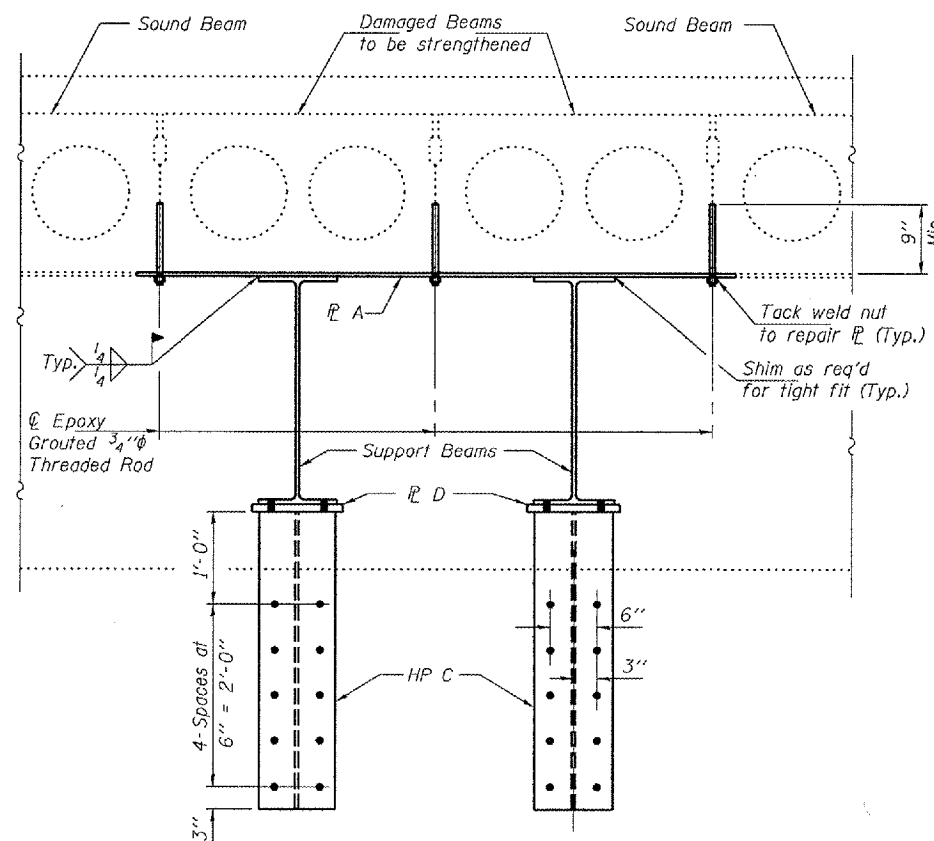


SECTION A-A

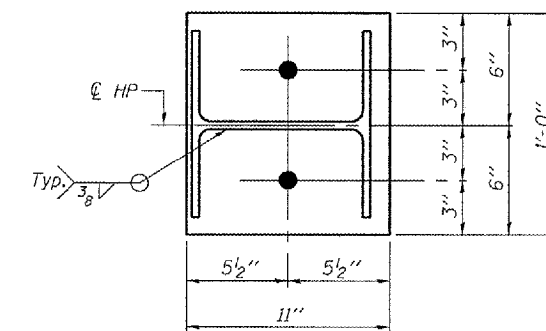


HP B
HP10x42 x 2'-9"
(2 Required)

HP C
HP10x42 x 3'-3"
(2 Required)



SECTION B-B



SECTION C-C
D-1" x 1'-0" x 11"
(4 Required)

DESIGNED	AJB
CHECKED	ATH
DRAWN	Steffen
CHECKED	AJB ATH

FEBRUARY 26, 2008

EXAMINED *Carl P. ...*
ENGINEER OF STRUCTURAL SERVICES
PASSED *Ralph E. Anderson*
ENGINEER OF BRIDGES AND STRUCTURES

REPAIR DETAILS
FAP 566 OVER
BR. SANDY CREEK
SCOTT COUNTY
SN 086-0012