

STATE OF ILLINOIS
DEPARTMENT OF TRANSPORTATION

DIVISION OF HIGHWAYS

PROPOSED
HIGHWAY PLANS

FAP ROUTE 322 (US 51)
SECTION D6 BUILDING DEMOLITION 2008-2

CHRISTIAN COUNTY
C-96-043-08

F.A.P. RTE.	SECTION	COUNTY	TOTAL SHEETS	SHEET NO.
322		CHRISTIAN	6	1
FED. ROAD DIST. NO.	ILLINOIS	CONTRACT NO. 72B81		

- D6 BUILDING DEMOLITION 2008-2

D-96-043-08

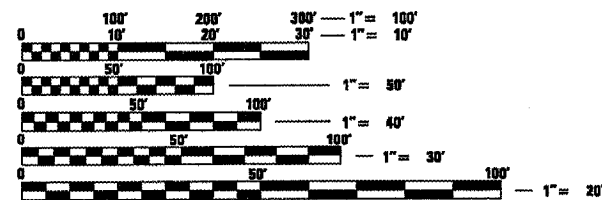


INDEX OF SHEETS

- 1 COVER SHEET
- 2 GENERAL NOTES
- 3 SUMMARY OF QUANTITIES
- 4 PLAN SHEET
- 5 SEEDING PLAN SHEET
- 6 FUTURE FOUR LANE PLAN SHEET

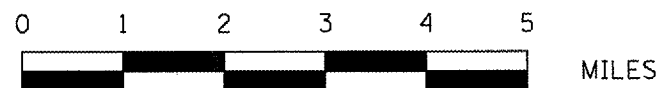
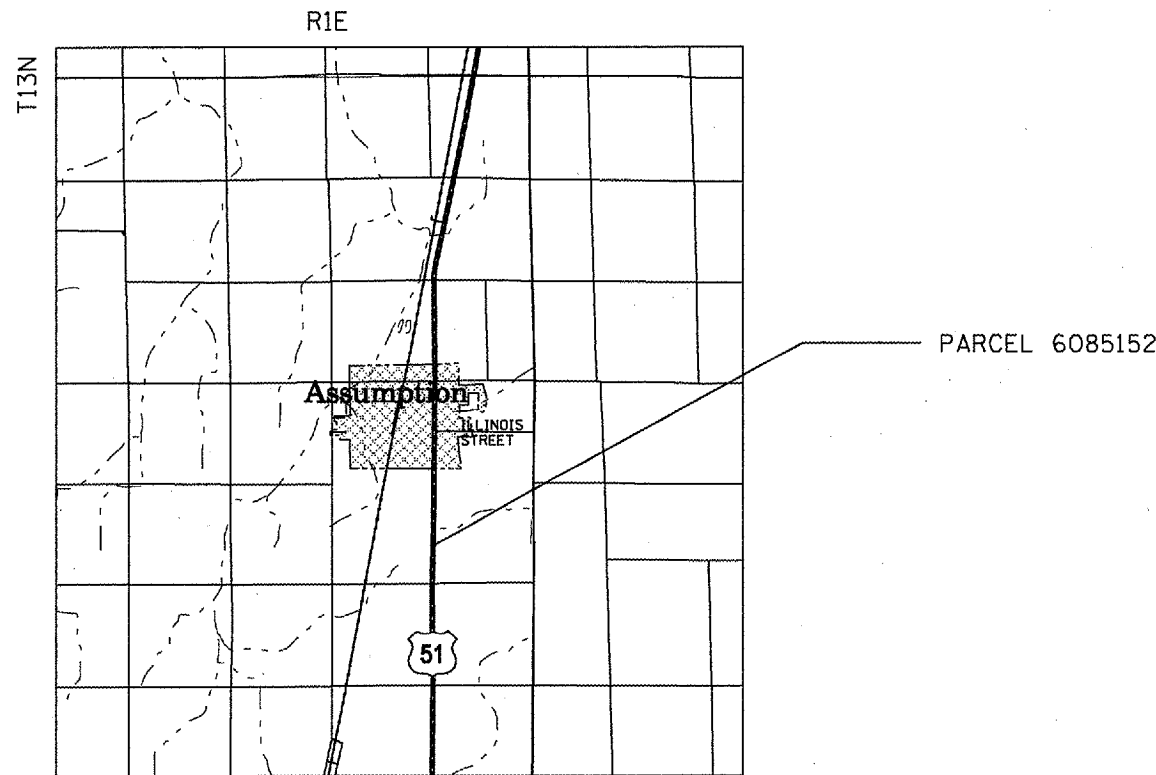
HIGHWAY STANDARDS

- 701001-01
- 701006-02
- 701901
- 000001-05



FULL SIZE PLANS HAVE BEEN PREPARED USING STANDARD ENGINEERING SCALES. REDUCED SIZED PLANS WILL NOT CONFORM TO STANDARD SCALES. IN MAKING MEASUREMENTS ON REDUCED PLANS, THE ABOVE SCALES MAY BE USED.

J.U.L.I.E.
JOINT UTILITY LOCATION INFORMATION FOR EXCAVATION
1-800-892-0123
OR 811



SCALE

PROJECT ENGINEER: SAL MADONIA PH 217-782-4761
SQUAD LEADER: JEFFREY P. MYERS PH 217-524-7940

CONTRACT NO. 72B81

STATE OF ILLINOIS
DEPARTMENT OF TRANSPORTATION
DIVISION OF HIGHWAYS

SUBMITTED FEB 5 2008

Christine M. Reed
DEPUTY DIRECTOR OF HIGHWAYS, REGION ENGINEER

March 21, 2008
Eric E. Harn
ENGINEER OF DESIGN AND ENVIRONMENT

March 21, 2008
Christine M. Reed
DIRECTOR OF HIGHWAYS, CHIEF ENGINEER

PRINTED BY THE AUTHORITY
OF THE STATE OF ILLINOIS