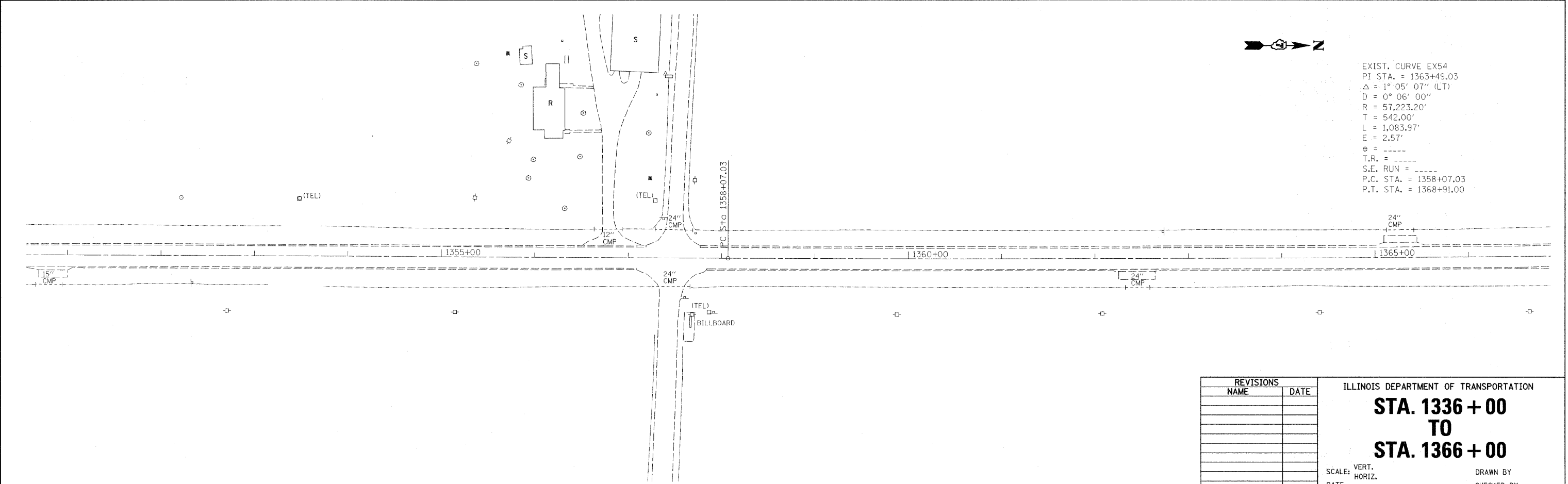
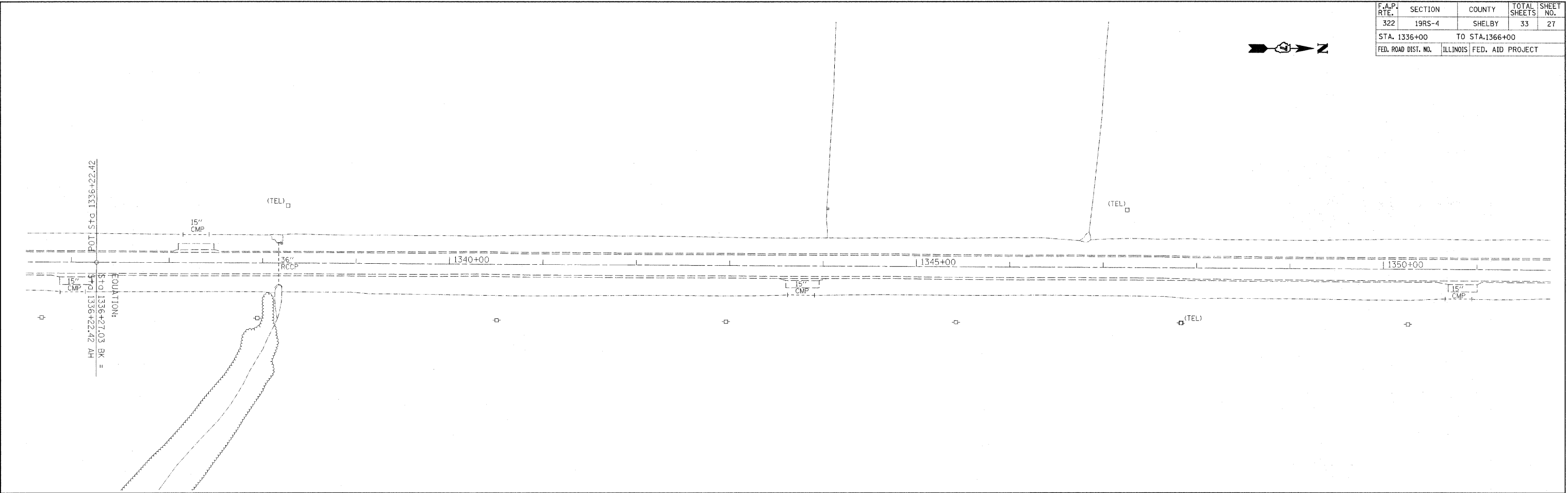


F.A.P. RTE.	SECTION	COUNTY	TOTAL SHEETS	SHEET NO.
322	19RS-4	SHELBY	33	27

STA. 1336+00	TO STA. 1366+00
FED. ROAD DIST. NO.	ILLINOIS FED. AID PROJECT



EXIST. CURVE EX54
 PI STA. = 1363+49.03
 $\Delta = 1^{\circ} 05' 07''$ (LT)
 $D = 0^{\circ} 06' 00''$
 $R = 57,223.20'$
 $T = 542.00'$
 $L = 1,083.97'$
 $E = 2.57'$
 $e =$
 $T.R. =$
 $S.E. RUN =$
 $P.C. STA. = 1358+07.03$
 $P.T. STA. = 1368+91.00$

REVISIONS	
NAME	DATE

ILLINOIS DEPARTMENT OF TRANSPORTATION
STA. 1336 + 00
TO
STA. 1366 + 00
 SCALE: VERT. _____
 HORIZ. _____
 DATE _____ DRAWN BY _____
 CHECKED BY _____

PLOT DATE = 1/23/2008
 FILE NAME = c:\projects\74144\dwg\plan_74144.dgn
 PLOT SCALE = 50,000 / IN.
 USER NAME = swartzm