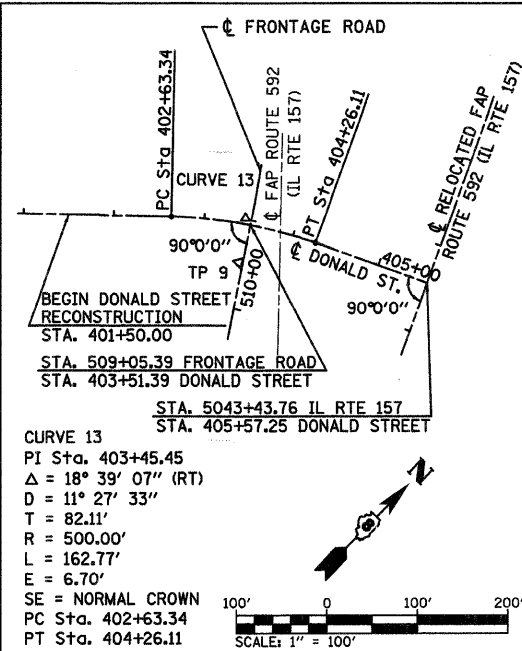
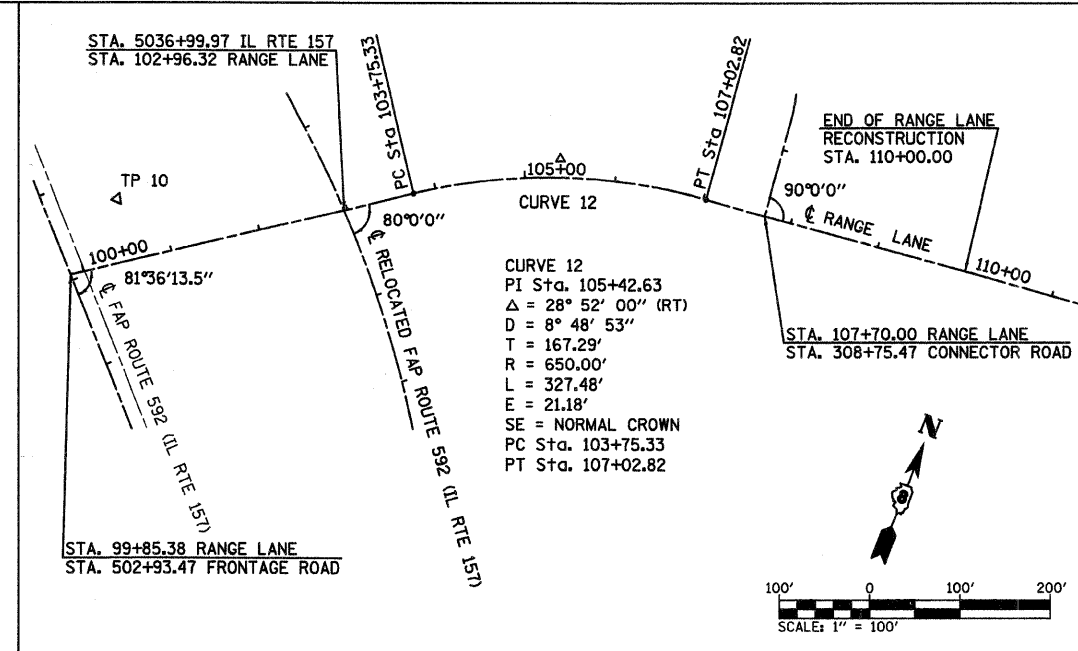
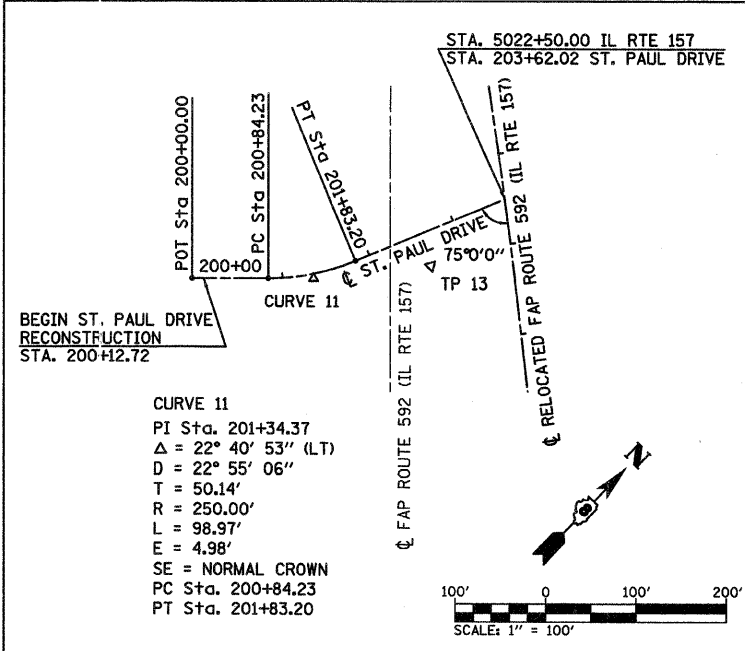


| FAP ROUTE | SECTION        | COUNTY    | TOTAL SHEETS | SHEET NO |
|-----------|----------------|-----------|--------------|----------|
| 592       | 121-1R, 121HVB | ST. CLAIR | 239          | 44       |

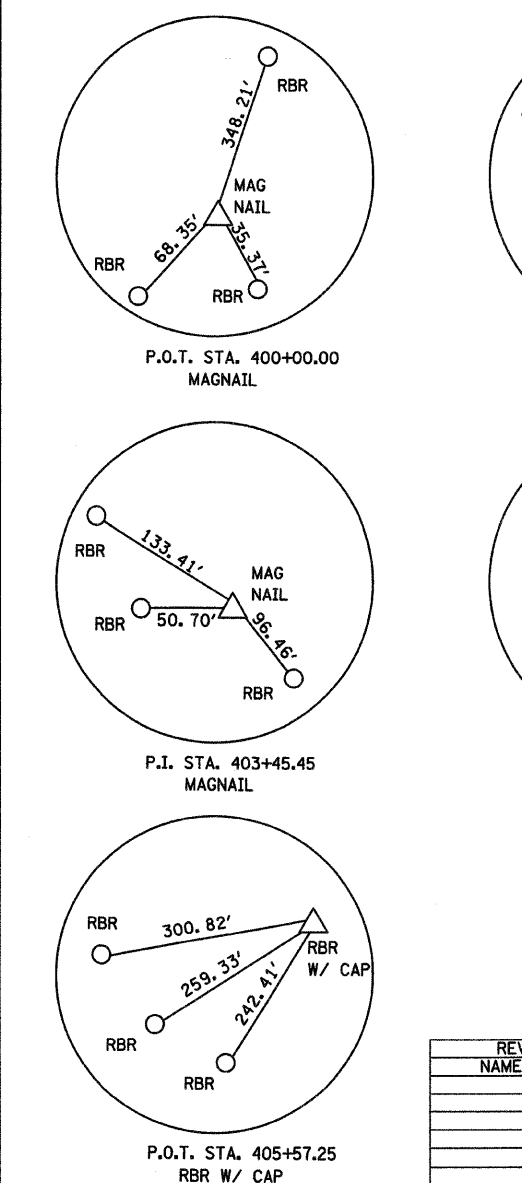
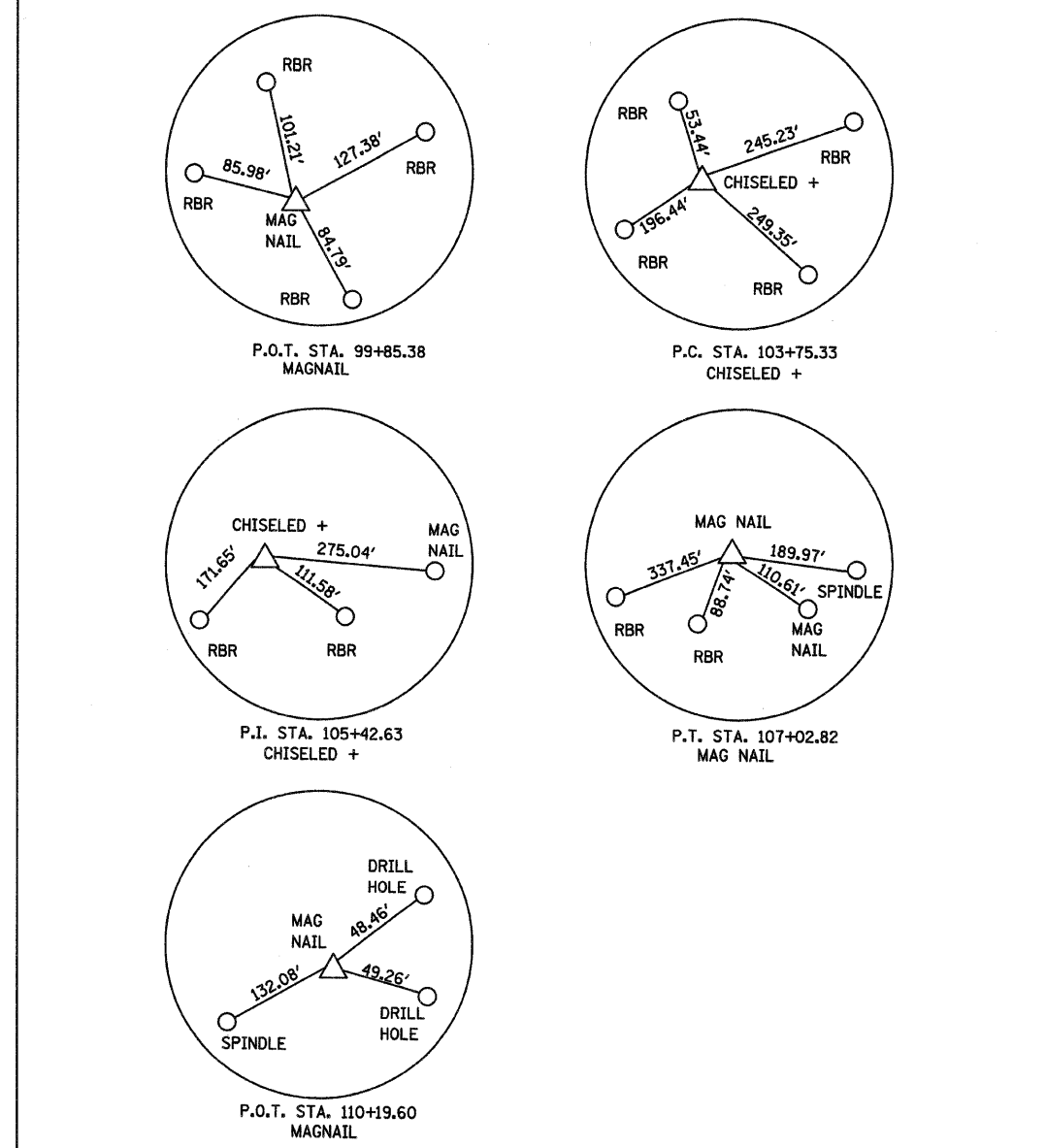
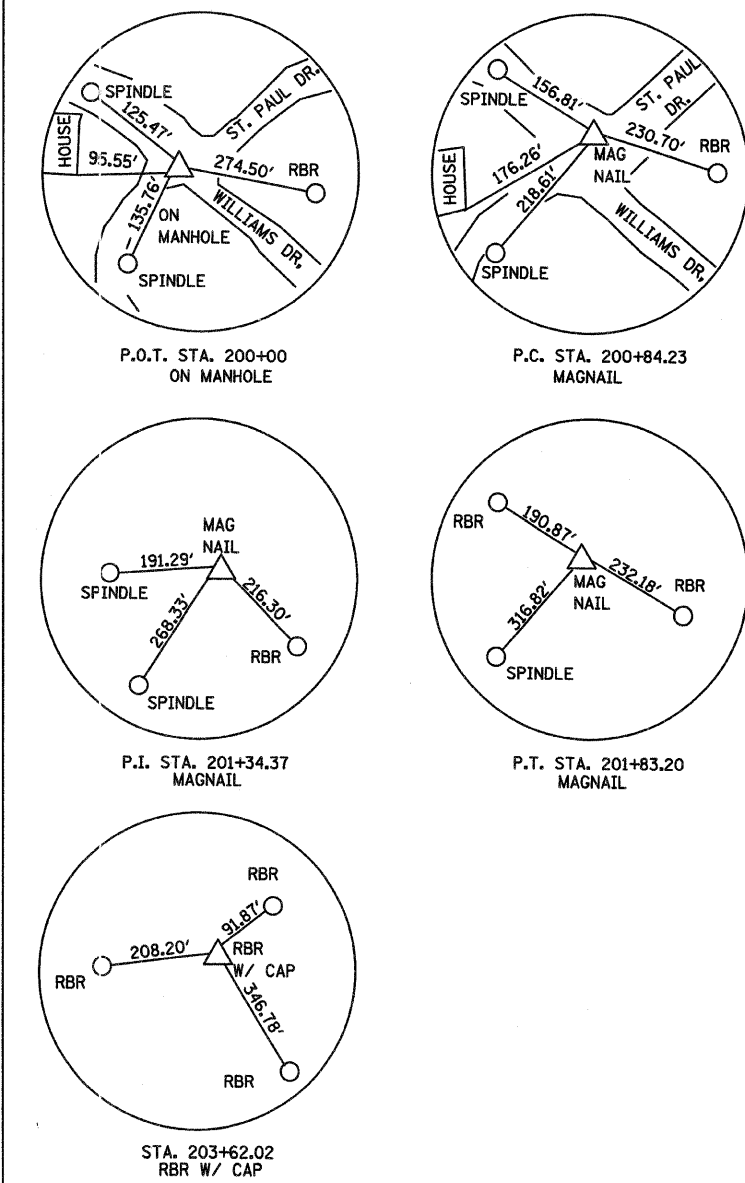
VARIOUS STREETS  
PROPOSED ALIGNMENT

GROUND COORDINATES

| DESCRIPTION        | COORDINATES  |                |
|--------------------|--------------|----------------|
|                    | NORTHING     | EASTING        |
| TP 9               | 690,387.6612 | 2,293,964.7063 |
| TP 10              | 690,977.5227 | 2,293,558.8662 |
| TP 13              | 691,876.9249 | 2,292,671.8135 |
| ST. PAUL DRIVE     |              |                |
| POT STA. 200+00.00 | 691,683.6726 | 2,292,491.4899 |
| PC STA. 200+84.23  | 691,742.1382 | 2,292,552.1241 |
| PT STA. 201+83.20  | 691,822.9701 | 2,292,608.0999 |
| POT STA. 203+62.02 | 691,987.1380 | 2,292,679.0117 |
| RANGE LANE         |              |                |
| POT STA. 99+85.38  | 690,884.4510 | 2,293,540.2030 |
| PC STA. 103+75.33  | 691,107.3165 | 2,293,860.1988 |
| PI STA. 105+42.63  | 691,202.9278 | 2,293,997.4797 |
| PT STA. 107+02.82  | 691,220.3835 | 2,294,163.8614 |
| POT STA. 110+19.60 | 691,253.4371 | 2,294,478.9182 |
| DONALD STREET      |              |                |
| POT STA. 400+00.00 | 690,191.7473 | 2,293,683.4526 |
| PC STA. 402+63.34  | 690,372.0586 | 2,293,875.3832 |
| PI STA. 403+45.45  | 690,428.2798 | 2,293,935.2273 |
| PT STA. 404+26.11  | 690,462.4091 | 2,294,009.9089 |
| POT STA. 405+57.25 | 690,516.9164 | 2,294,129.1818 |



DATE: \_\_\_\_\_ BY: \_\_\_\_\_  
SURVEYED: \_\_\_\_\_  
PLAN: \_\_\_\_\_  
NOTE BOOK: \_\_\_\_\_  
RT. OF WAY CHECKED: \_\_\_\_\_  
CADD FILE NAME: \_\_\_\_\_



| REVISIONS |      |
|-----------|------|
| NAME      | DATE |
|           |      |
|           |      |
|           |      |
|           |      |

ILLINOIS DEPARTMENT OF TRANSPORTATION  
HORIZONTAL ALIGNMENT AND SURVEY TIES  
FAP ROUTE 592  
SECTION 121-1R, 121HVB  
COUNTY ST. CLAIR  
DRAWN BY: \_\_\_\_\_

PLOT DATE = 05/21/2007  
FILE NAME = H:\P\21015\MicroStation\Design\align01a.dgn  
PLOT SCALE = 50.0000 / IN.  
USER NAME = J05267