

F.A.P. RTE.	SECTION	COUNTY	TOTAL SHEETS	SHEET NO.
592	121-1R, 121HWB	ST. CLAIR	239	62
STA. 5039+00 TO STA. 5054+00				
FED. ROAD DIST. NO. ILLINOIS FED. AID PROJECT				

PLAN

DATE	
BY	
SURVEYED	
ALIGNED	
CHECKED	
FILED	
NO.	

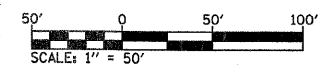
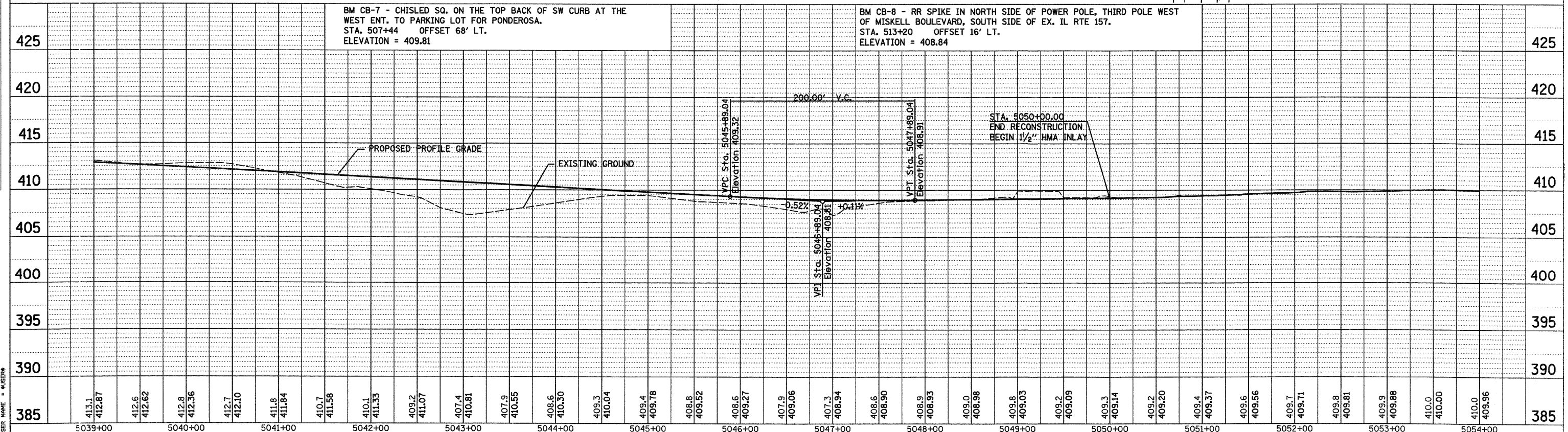
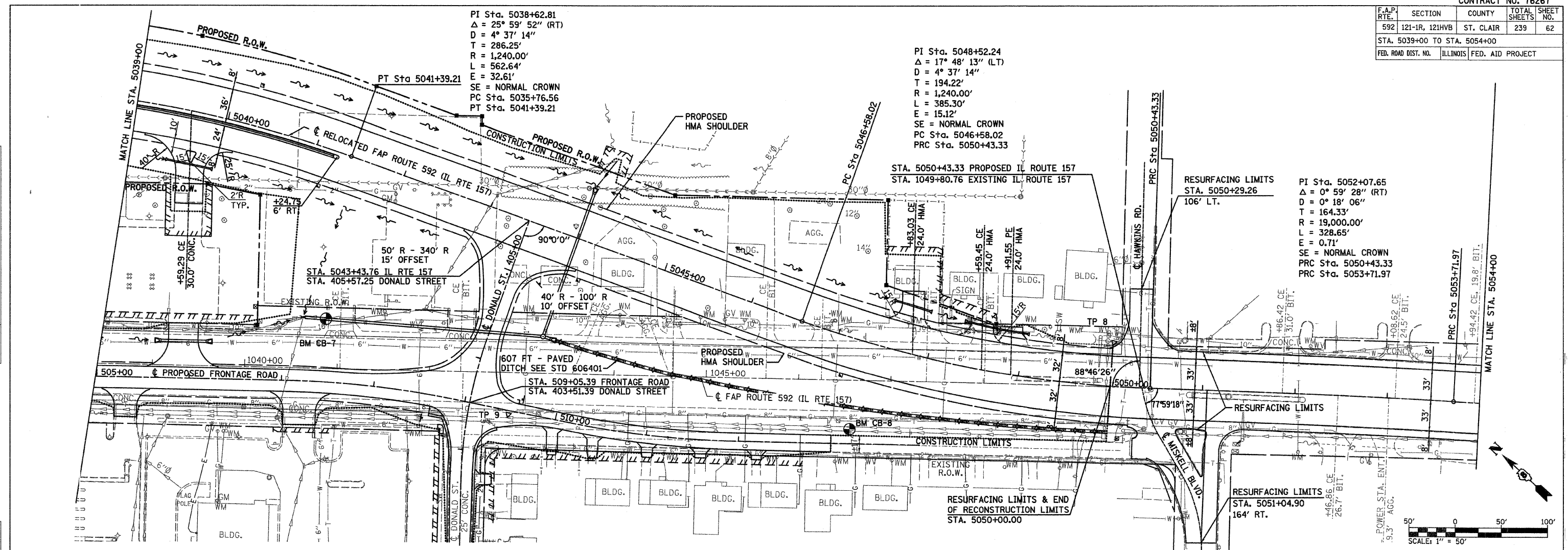
PROFILE

DATE	
BY	
SURVEYED	
GRADES	
CHECKED	
BLM. NOTED	
PROSTRUCTURE	
NOTATIONS	
CHKD	
NO.	

PI Sta. 5038+62.81
 $\Delta = 25^\circ 59' 52''$ (RT)
 $D = 4^\circ 37' 14''$
 $T = 286.25'$
 $R = 1,240.00'$
 $L = 562.64'$
 $E = 32.61'$
 SE = NORMAL CROWN
 PC Sta. 5035+76.56
 PT Sta. 5041+39.21

PI Sta. 5048+52.24
 $\Delta = 17^\circ 48' 13''$ (LT)
 $D = 4^\circ 37' 14''$
 $T = 194.22'$
 $R = 1,240.00'$
 $L = 385.30'$
 $E = 15.12'$
 SE = NORMAL CROWN
 PC Sta. 5046+58.02
 PRC Sta. 5050+43.33

PI Sta. 5052+07.65
 $\Delta = 0^\circ 59' 28''$ (RT)
 $D = 0^\circ 18' 06''$
 $T = 164.33'$
 $R = 19,000.00'$
 $L = 328.65'$
 $E = 0.71'$
 SE = NORMAL CROWN
 PRC Sta. 5050+43.33
 PRC Sta. 5053+71.97



DATE: 03/22/2007
 PLOT NAME: H:\P\21015\Microstat\Design\plan\881a.dgn
 PLOT SCALE: 1/8" = 100' / 1" = 800'
 USER: HME